

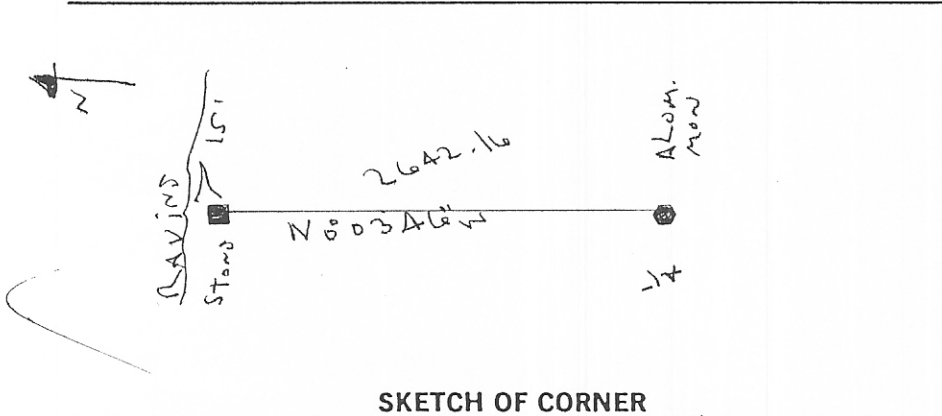
INSTRUCTIONS

1. Original and/or subsequent record used to evaluate the corner position.
2. Description of evidence found, note discrepancies in the record, state method of establishing lost or obliterated corners.
3. Description of monument and accessories set to perpetuate the corner position.
4. Sketch of corner, show all pertinent data which can best be shown in a sketch example, corner marking, topography ties, position of accessories, etc.
5. Certification must be signed and sealed by Land Surveyor registered in the State of Montana.
6. Fill in Cross Index & Section Diagram at bottom of sheet.

CERTIFIED CORNER RECORDATION

Corner Southeast Section 8 T. 35N R. 54E P.M.M. Sheridan County

1. Original survey set a granite stone 18x10x8 inches, 12 inches in the ground, for corner of Sections 8, 9, 16 and 17, marked with 4 notches on S. and E. edges; dig pits, 18x18x12 ins. in each Section, 5½ ft. distance, and raise a mound of earth, 4 ft. base, 2 ft. high W. of corner.
2. Found original stone in place.
Set #5 rebar and 2" cap on east side of stone.
3. Stone is in pasture on south side of washed out ravine.



SKETCH OF CORNER

CERTIFICATION

I, _____ certify the information shown herein is true and correct.

I, Richard H. M. Thom certify that this Corner Record correctly represents work performed by me or under my direction in compliance with the "Corner Recordation Act" (7022-101 et seq., M.C.A.)

Date: 3/96 Reg. No. 9018S

Employer: Interstate Engineering, Inc

Office of Clerk and Recorder, County of Sheridan. This "corner record" was filed for record on June 26, 1996 at 11:00 AM was noted on the cross-index plat and is assigned page No. _____, in book No. 287

444384

County Official

Sec. 8
