

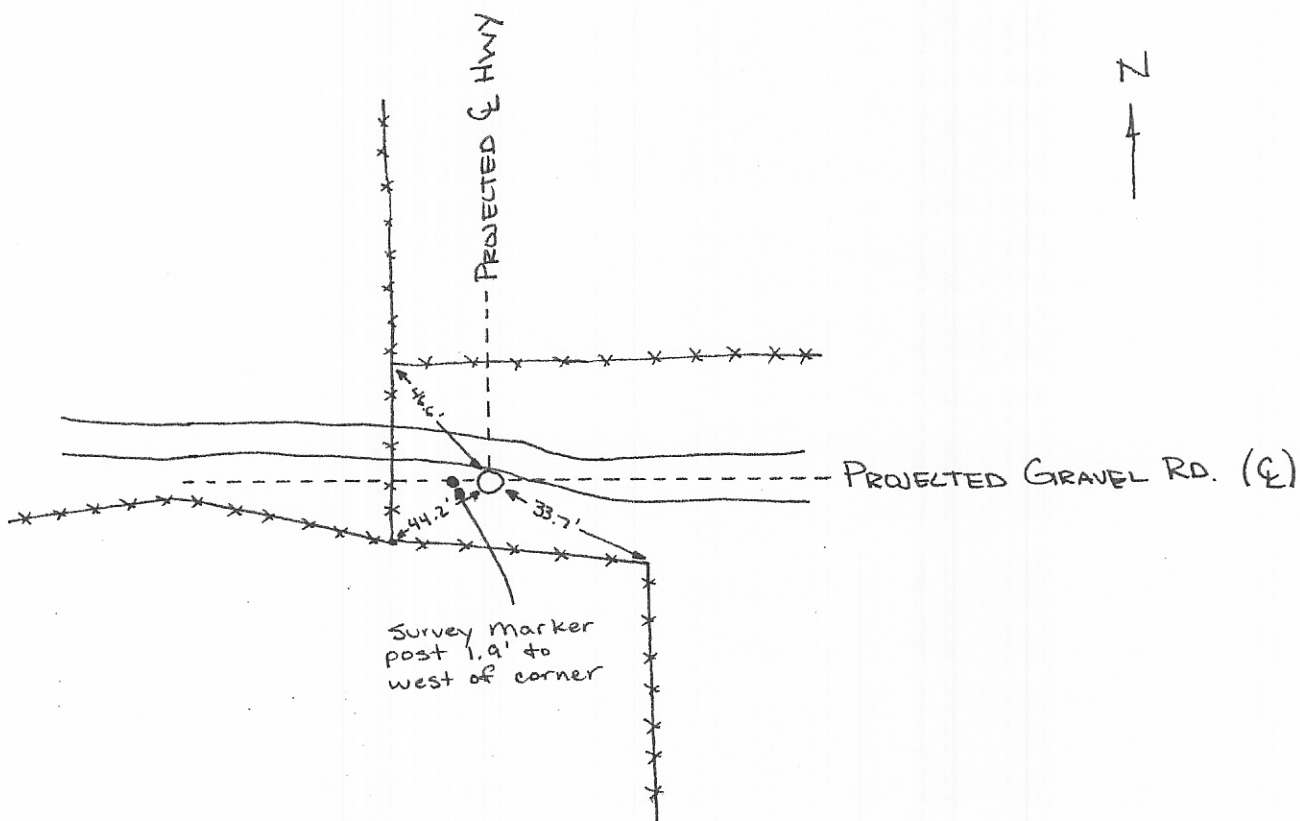
INSTRUCTIONS

1. Original and/or subsequent record used to evaluate the corner position.
2. Description of evidence found, note discrepancies in the record, state method of establishing lost or obliterated corners.
3. Description of monument and accessories set to perpetuate the corner position.
4. Sketch of corner, show all pertinent data which can best be shown in a sketch example, corner marking, topography ties, position of accessories, etc.
5. Certification must be signed and sealed by Registered Land Surveyor in State of Montana.
6. Fill in Cross Index & Section Diagram at bottom of sheet.

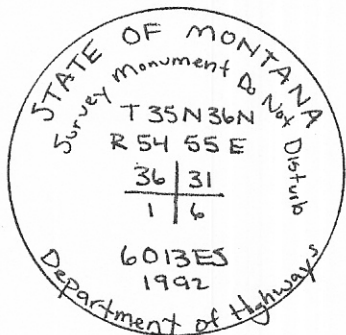
CERTIFIED CORNER RECORDATION

Corner SW Cor Sec 31 T. 36N R. 55E P.M.M. Sheridan County

- 1.) Used existing fencelines, gravel roads, and highway control
- 2.) Checked bearings and distances with GLO Notes - fit fairly well  
- couldn't find original monumentation
- 3.) Set MDOH Alum. Ape (27" long 3/4" Alum cap)



3/4" Alum cap



SKETCH OF CORNER

CERTIFICATION

I, DAN KENCUKA  
certify the information shown on this map is true and correct.  
Dan Kencuka  
Signature Ground Party, Chief

I, JACK R. FISHER  
certify that this Corner Record correctly represents work performed by me or under my direction in compliance with the "Corner Recordation Act" (70-29-101, et seq., M.C.A.)  
Jack R. Fisher  
Signature of Surveyor & Seal  
Date: July 19, 1992 Reg. No. 6013ES

Employer: Thomas, Dean & Haskins

Office of Clerk and Recorder, County of Sheridan, This "corner record" was filed for record on the May 6, 1992 day of 1992 at 1:00 PM, was noted on the cross-index plat and is assigned page No. 339, in book No. 339

Milton E. Woodard  
County Official  
452044 by Charles Tomlinson Reg.

Cross Index No. 71 T. 36N R. 55E P.M.M.

Sec. 31


• - corner this sheet