

INSTRUCTIONS

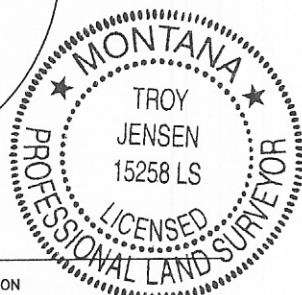
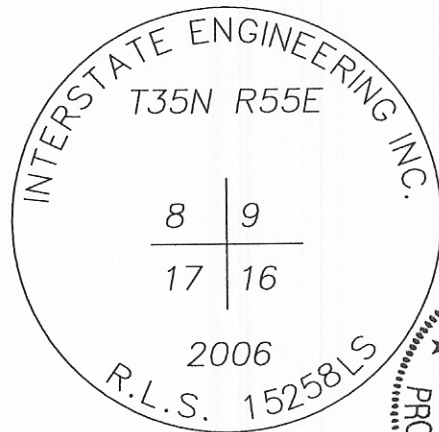
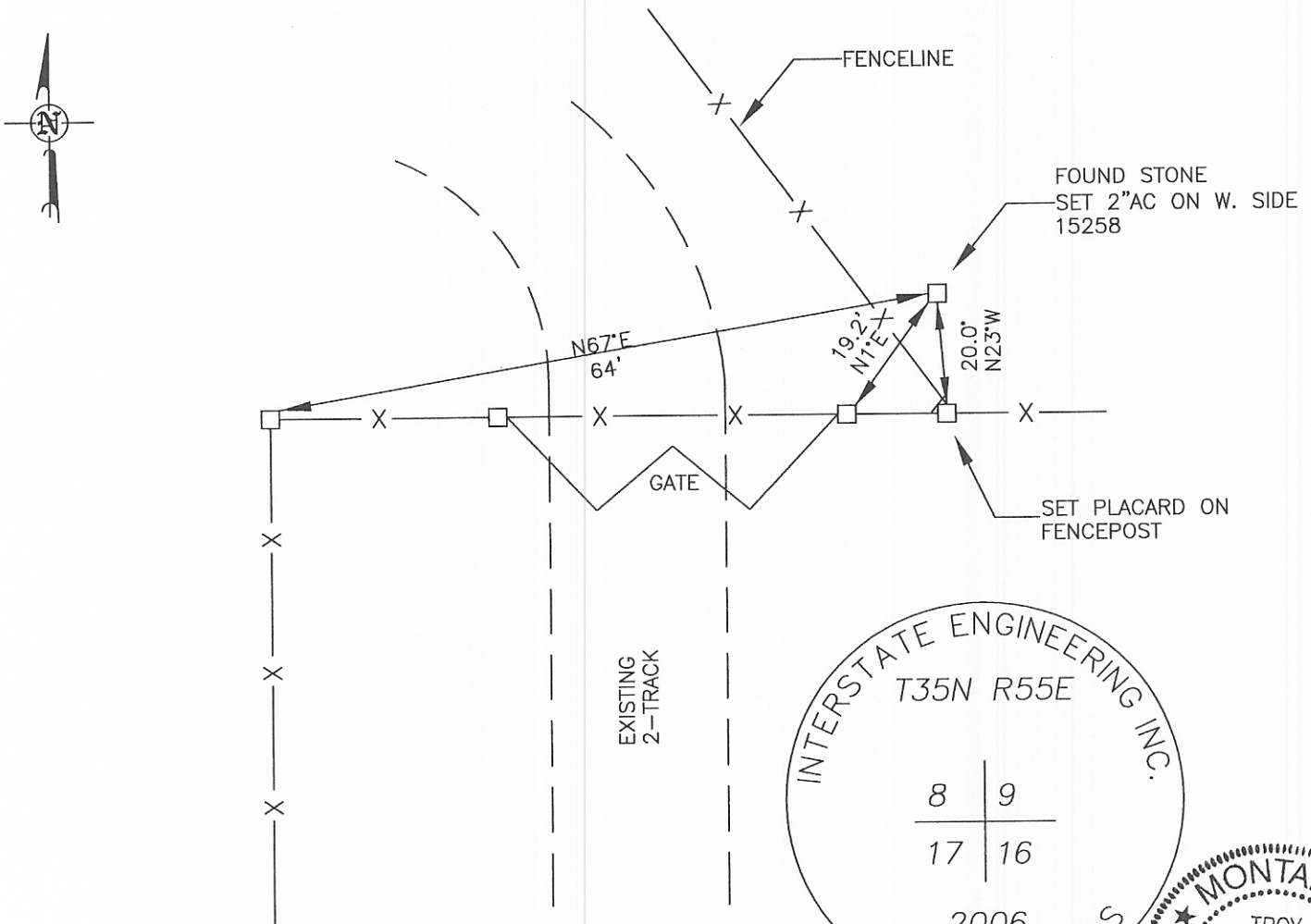
1. Original and subsequent record used to evaluate the corner position.
2. Description of evidence found, note discrepancies in the record.
3. Description of monument and accessories set to perpetuate the corner position.
4. Sketch of corner, show all pertinent data.
5. Certification must be signed and sealed by Land Surveyor licensed in the State of Montana.
6. Fill in index information and show the corner's approximate location within the section diagram.

FILM 616 EXP 545

CERTIFIED CORNER RECORDATION

Corner NW COR SEC. 16 T. 35N R. 55E P.M.M. SHERIDAN County

1. Had copy of the Original GLO Plat and GLO notes. Had a copy of the quad map.
2. Found Original Stone.
3. Accepted Stone as Monument. Set 2"ac on  $\frac{5}{8}$ "x24" Rebar-15258LS.



CERTIFICATION

I, DUSTY SLETVOLD  
 certify the information shown herein is true and correct.  
*[Signature]*  
 Signature Ground Party Chief

I, TROY JENSEN  
 certify that this Corner Record correctly represents work performed by me or under my direction in compliance with the "Corner Recordation Act" (70-22-101, et seq., M.C.A.)  
*[Signature]*  
 Signature of Surveyor & Seal

Date: 1-13-06 Reg. No. 15258LS  
 Employer: INTERSTATE ENGINEERING INC  
 IE#S05-9-299

Office of Clerk and Recorder, County of \_\_\_\_\_  
 466640 BOOK: 616  
 STATE OF MONTANA SHERIDAN COUNTY  
 RECORDED: 01/24/2007 1:38 KOI: CORNER REC/  
 JUNE A. JOHNSON CLERK AND RECORDER  
 FEE: \$0.00 BY: *[Signature]*  
 TO: FILE

PAGE: 545 Pages: 1

This "corner  
 \_\_\_\_\_, in

Sec. 16


#580

Cross Index No. J-9 T. 35N R. 55E PMM