

CERTIFIED LAND CORNER RECORDATION

DESCRIPTION OF CORNER EVIDENCE FOUND, AND ORIGINAL RECORD (IF KNOWN)

At the E $\frac{1}{4}$ corner Section 14, T.36 N., R.27 W., Principal Meridian, Montana.

Record: Set a sandstone 14"x10"x7" 10" in the ground for $\frac{1}{4}$ Sec. corner marked $\frac{1}{4}$ on W face from which:
 A pine 18" in diameter bears S73°W, 20 links dist. Marked $\frac{1}{4}$ S, B.T. No other ties within limit. Dug pits 18"x18"x12" N & S of stone 5 $\frac{1}{2}$ ft. dist. and raised a mound of earth 1 $\frac{1}{2}$ ft. high 3 $\frac{1}{2}$ ft. base alongside.

Found: No evidence of original stone. Found as a county road runs through this position. I found alone 30" pine tree which appears to have been blazed at one time.

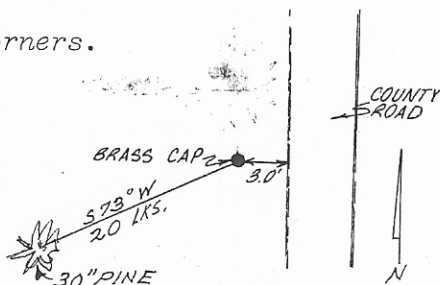
DESCRIPTION OF MONUMENT AND ACCESSORIES ESTABLISHED TO PERPETUATE THE ORIGINAL LOCATION OF THIS CORNER:

Date of work: Sept. 73'

Set: I repropotion, the $\frac{1}{4}$ corner & compare it to the position established by using the 30" pine as an original bearing tree. The bearings to the adjacent section corners agree within 3 seconds and the bearing tree gives a corner position 9.82 feet North of the proportioned corner. Therefore, I accept the 30" pine as the original bearing tree and re-establish the corner position from it. I set in concrete a 2" brass cap affixed to a 2" x 30" iron pipe 28" in the ground. The position is in the West ditch and 3 ft. from the shoulder of the existing county road.

SKETCH, WITH COURSE AND DISTANCE TO ADJACENT CORNERS IF DETERMINED IN THIS SURVEY. (MAY SKETCH OR PASTE REPRODUCTION ON REVERSE SIDE.)

See reverse side of this form for ties to other corners.



Surveyor's Seal

I, James R. Weatherly certify that the information shown herein is true and correct.

Signature of Ground Party Chief

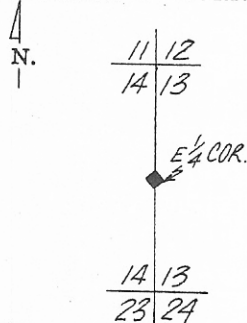
I, Gordon E. Sorenson certify that I have carefully performed or reviewed the work done on the diagrammed corner as reported on this recordation form and approve the same.

Signature of Surveyor

2345ES

Registration Number

DIAGRAM OF CORNER:



= Corner recorded on the sheet

Office of Clerk and Recorder, County of Lincoln
 This "corner record" was filed for record on the 18th day of January, 1974, was noted on the cross-index plat and is assigned page No. 205, in book No. 1 Cleanor L. Laughlin, Mae Watson, Deputy
 County Official
 Cross Index No. L-21 T. 36 N R. 27 W Mer.