

# CERTIFIED CORNER RECORDATION

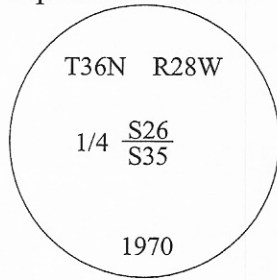
**Corner** 1/4      **Secs.** 26 & 35      **T.** 36N      **R.** 28W      **P.M., MT**      **Lincoln**      **County**

I. 1903 G.L.O. Original Record by Gordon B. Smith et. al.: Set a washed boulder, 18x10x3 ins., 12 ins. in the ground, for 1/4 sec. cor., mkd. "1/4" on N. face.

Established two bearing trees:

- A fir, 5 ins. diam., bears S29 1/2°E, 20 lks. dist., mkd. "1/4 S35 BT".
- A tamarack, 12 ins. diam., bears N29°W, 9 lks. dist., mkd. "1/4 S26 BT".

1970 B.L.M. Remonumentation Record by Joseph E. French: The 1/4 sec. cor. of secs. 26 and 35, monumented with a washed boulder, 18x10x3 ins., firmly set, mkd. "1/4" on the N. face and witnessed by the remains of the original bearing trees. At the corner point, set an iron post, 30 ins. long, 2 1/2 ins. diam., 24 ins. in the ground, with brass cap mkd. as shown.



Established two new bearing trees:

- A pine, 14 ins. diam., bears N23°E, 49 lks. dist., mkd. "1/4 S26 BT".
- A fir, 10 ins. diam., bears S1/2°E, 59 lks. dist., mkd. "1/4 S35 BT".

Bury the original stone alongside the iron post.

II. Found a 2 1/2 in. diam. iron pipe, protruding 6 ins. above ground, with a 3 1/4 in. diam. B.L.M. brass cap mkd. as shown.

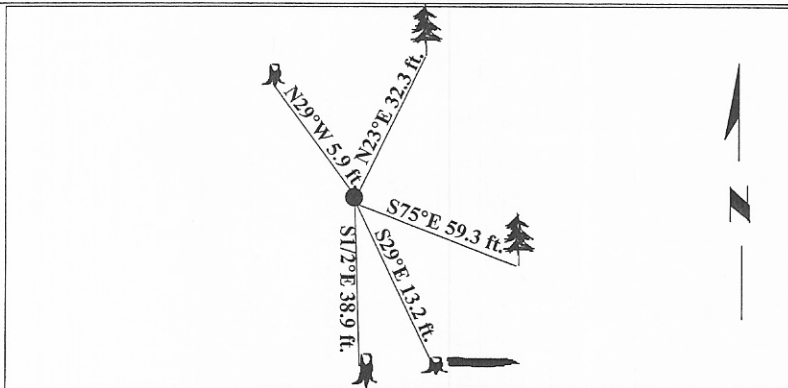
from which:

- A pine, 19 ins. diam., bears N23°E, 32.3 ft. dist., with a healed face. (B.L.M. record)
- A fir (high stump), 13 ins. diam., bears S1/2°E, 38.9 ft. dist., with a healed face. (B.L.M. record)
- Rotten remains of stump and log, bears S29°E, 13.2 ft. dist., visible face. (G.L.O. record)
- A stump, bears N29°W, 5.9 ft. dist., with "1/4 S26 BT" visible. (G.L.O. record)

III. Established one new bearing tree:

- A fir, 12 ins. diam., bears S75°E, 59.3 ft. dist., mkd. "1/4 S35 BT".

Painted bearing trees and attached Land Survey Monument and Bearing Tree signs.  
Magnetic Declination: 20° East



**SKETCH OF CORNER**

CERTIFICATION

I, Thomas M. Hommel  
certify the information shown herein to be correct.

---

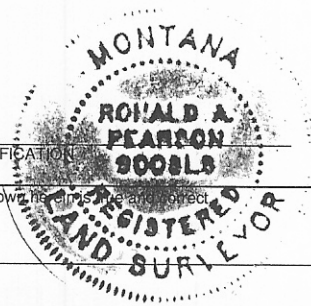
I, Ronald A. Pearson  
certify that this Corner Record correctly represents work performed by me or under my direction in compliance with the "Corner Recordation Act" (70-22-101, et seq., M.C.A.)

*[Signature]*  
Signature of Surveyor & Seal

Date: 3/18/98

Reg. No.: 9008LS

Employer: U.S. FOREST SERVICE



Office of Clerk and Recorder, County of Lincoln. This "corner record" was filed for record on 7-1-98 and was noted on the cross-index plat and is assigned page No. 10122 in book No. \_\_\_\_\_.

Carol M. Cummins By SUB  
County Official

