

1/4 COR 11/14 T 36 R 28W, MPM, LINCO COUNTY, MONTANA

DESCRIPTION OF CORNER EVIDENCE FOUND, AND ORIGINAL RECORD (IF KNOWN)

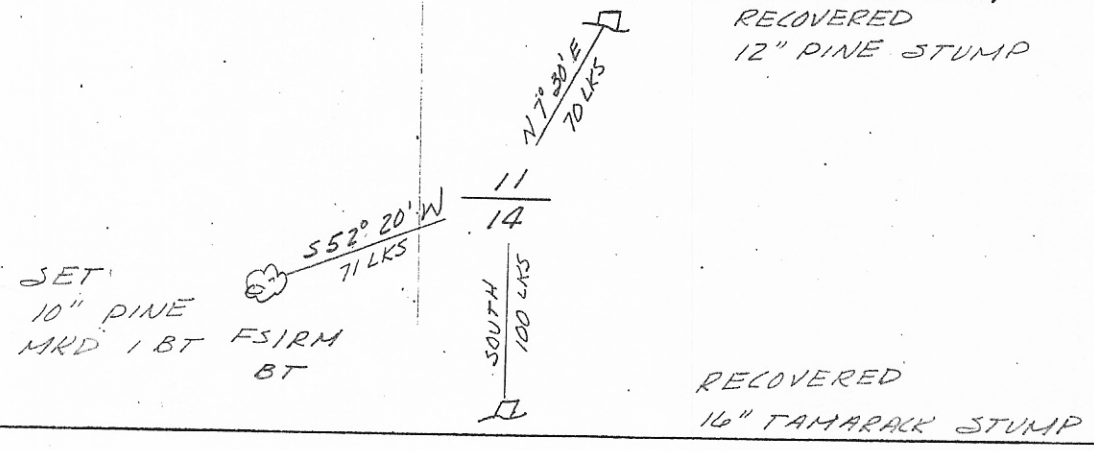
ORIGINAL 1903 GLO DESC. VOL 4402 P 49
CORNER DESC: GRANIT STONE 16"x10"x8", 11" IN GROUND, MKD 1/4 ON N FACE
WITNESS MARKS: 12" PINE BEARS N 7° 36' E, 70 LKS, MKD 1/4 S 11 BT
16" TAMARACK BEARS SOUTH, 100-LKS, MKD 1/4 S 14 BT
FOUND: 1/4 COR STONE IN PLACE MKD 1/4 ON N FACE
RECOVERED THE TWO STUMPS OF THE B.T.

DESCRIPTION OF MONUMENT AND ACCESSORIES ESTABLISHED TO PERPETUATE THE ORIGINAL LOCATION OF THIS CORNER:

SET IRON PIPE WITH BRONZE CAP ALONGSIDE OF STONE Date of work: 7 OCT 1966
BRONZE CAP STAMPED
T 36 N R 28 W
11/14
C of E 1966

MARKED NEW B.T.
10" PINE BEARS S 52° 20' W, 71 LKS, MKD 1 BT FSIRM BT

SKETCH, WITH COURSE AND DISTANCE TO ADJACENT CORNERS IF DETERMINED IN THIS SURVEY. (MAY SKETCH OR PASTE REPRODUCTION ON REVERSE SIDE.)



Surveyor's Seal



I, LAVERNE L. ESTES certify that the information shown herein is true and correct.

Signature of Ground Party Chief

DIAGRAM OF CORNER:

N. 11/14

A STD. B.C. STAMPED

T 36 N R 28 W

11/14

C of E 1966

= Corner recorded on the sheet

I, LAWRENCE A. SIGNANI certify that I have carefully performed or reviewed the work done on the diagrammed corner as reported on this recordation form and approve the same.

Signature of Surveyor

11422 Registration Number

Office of Clerk and Recorder, County of Lincoln

10:20 a.m.

This "corner record" was filed for record on the 21st day of July 1969, was noted on the cross-index plat and is

assigned page No. 124, in book No. 1

Signature of County Official Deputy

Cross Index No. J-19 T. 36 R. 28 Mer.