

CERTIFIED LAND CORNER RECORDATION

DESCRIPTION OF CORNER EVIDENCE FOUND, AND ORIGINAL RECORD (IF KNOWN)

From: "Retracement of Subdivision of T9S, R8E". 1914. (6848-69)

The retracement survey found "a sandstone, 10x5x10 ins. above ground, firmly set, marked and witnessed as described by the Surveyor General" in 1883. (original record: 1697-458)

During this survey, I found a set irregular volcanic rock in a small cairn. A larger older cairn is located to the north of the corner stone. The stone is as described in 1914, and has 5 notches on the east face and 4 notches on the south face.

DESCRIPTION OF MONUMENT AND ACCESSORIES ESTABLISHED
TO PERPETUATE THE ORIGINAL LOCATION OF THIS CORNER:

Date of work: 4/4/76

Cut an "x" on top of the stone.

SKETCH, WITH COURSE AND DISTANCE TO ADJACENT CORNERS IF DETERMINED IN THIS SURVEY.
(MAY SKETCH OR PASTE REPRODUCTION ON REVERSE SIDE.)

See drawing on reverse side.

Surveyor's Seal

I, _____
certify that the information shown herein is true and correct.

Henry A Rate

Signature of Ground Party Chief

I, **Henry A. Rate**
certify that I have carefully performed or reviewed the work done on the diagrammed corner as reported on this recordation form and approve the same.

Henry A Rate

Signature of Surveyor

DIAGRAM OF CORNER:

N.	T9S	
	R8E	
	MPM	
	10	11
	15	14

= Corner recorded on the sheet

3716S
Registration Number

Office of Clerk and Recorder, County of Park **142565**

This "corner record" was filed for record on the 27th day of October 1976, was noted on the cross-index plat and is assigned page No. 9, in book No. One

Margaret Monical
County Official

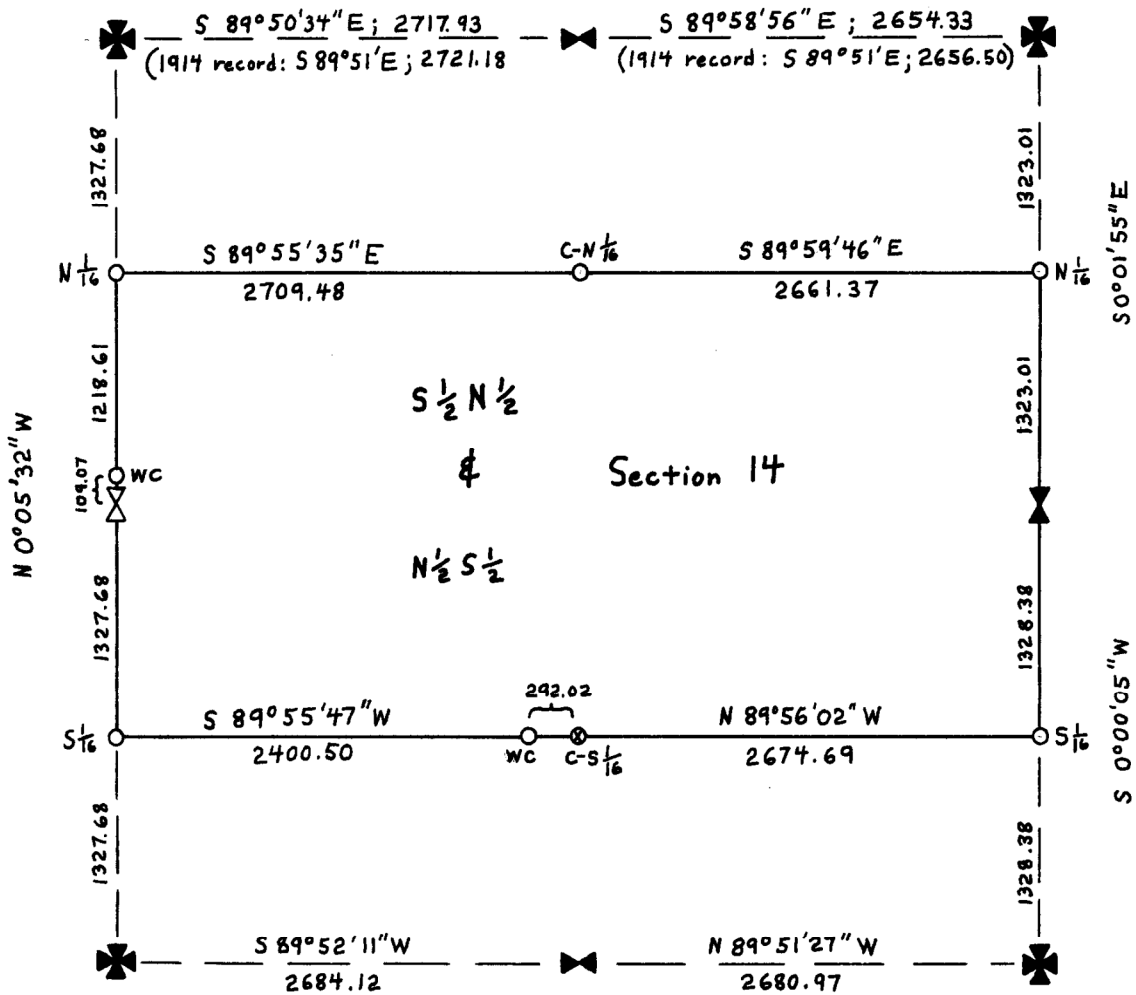
Form 125-3690

Cross Index No. 1-17 T. 9.80 R. 8.6 Mer.

Fee - 50 cents

Subdivision of Section 14, T9S, R8E, MPM, performed by Henry A. Rate (3716S) in June-July 1976.

(1883 records not shown. All nominal)



LEGEND

- ✠ Found stone
- ⊗ Original stone lost
- Surv Kap set this survey
- ⊙ Unmarked point
- wc Witness corner