

PTS #
18 + 20

CERTIFIED LAND CORNER RECORDATION

DESCRIPTION OF CORNER EVIDENCE FOUND, AND ORIGINAL RECORD (IF KNOWN)

ORIGINAL - Set a post 4 feet long, 8 ins. square, 2 feet in the ground with a mound of earth around it, marked C.C. 2. for Cor. No. 2.

FOUND (1979) - Found 5/8" rebar with aluminum cap marked (Mr. Watters R.L.S. states that he found remains of the original corner post).



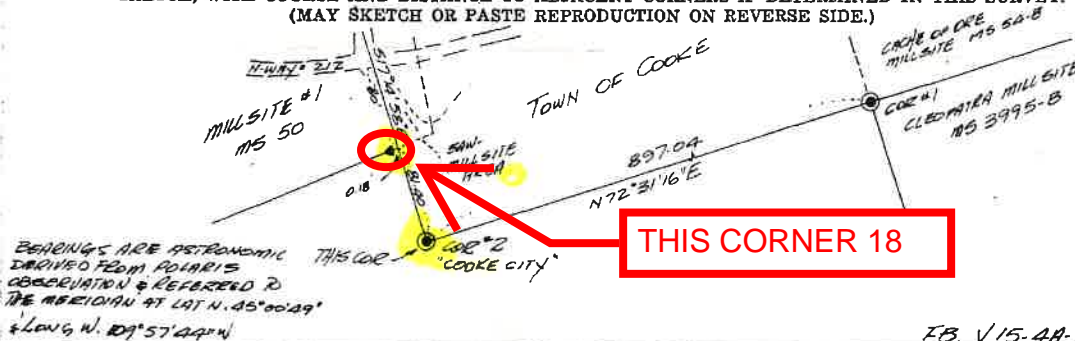
DESCRIPTION OF MONUMENT AND ACCESSORIES ESTABLISHED TO PERPETUATE THE ORIGINAL LOCATION OF THIS CORNER:

When replacing the 5/8" rebar with a 2 1/2"x30" aluminum pipe, we encountered remains of an old rotten post. The cap is 4" above ground and marked. Made bearing trees: 12" spruce S77°W 28.13' MK 2 Cooke B T; 12" spruce S07°W 80.66' MK 2 Cooke B T; 10" pine S57°E 46.71' MK 2 Cooke B T. Raised a collar of stone around the corner monument. A 6' steel fence post is set 1' SW of the Corner Monument.

Date of work: SEPT 11 1979



SKETCH, WITH COURSE AND DISTANCE TO ADJACENT CORNERS IF DETERMINED IN THIS SURVEY. (MAY SKETCH OR PASTE REPRODUCTION ON REVERSE SIDE.)



BEARINGS ARE ASTRONOMICAL DERIVED FROM POLARIS OBSERVATION & REFERRED TO THE MERIDIAN AT LAT N. 45°00'29\"/>

FB V15-4A-26

Surveyor's Seal

I, T. J. EMBREUS
certify that the information shown herein is true and correct.

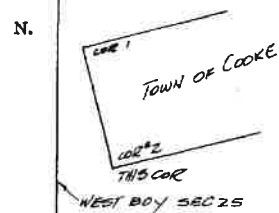
T. J. Embreus
Signature of Ground Party Chief

I, James B. Spring
certify that I have carefully performed or reviewed the work done on the diagrammed corner as reported on this recordation form and approve the same.

James B. Spring
Signature of Surveyor

1535-S
Registration Number

DIAGRAM OF CORNER:



= Corner recorded on the sheet
PAGE COUNTY MT.

163947

Office of Clerk and Recorder, County of Park

This "corner record" was filed for record on the 30th day of January, 1981, was noted on the cross-index plat and is assigned page No. 11, in book No. one at 12:05 PM James B. Spring County Official

Form 125 - 45227

Fee 50[¢]
See special cross index

Cross Index No. P-7-3 T. 9S R. 14E Mer.