

RS = 10.11

### CERTIFIED LAND CORNER RECORDATION

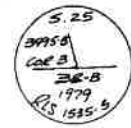
#### DESCRIPTION OF CORNER EVIDENCE FOUND, AND ORIGINAL RECORD (IF KNOWN)

ORIGINAL - S.E. location corner. Set a granite stone 30"x14"x14", 20" deep, marked 3-3995B for Corner No. 3. Raised a mound of stones alongside.

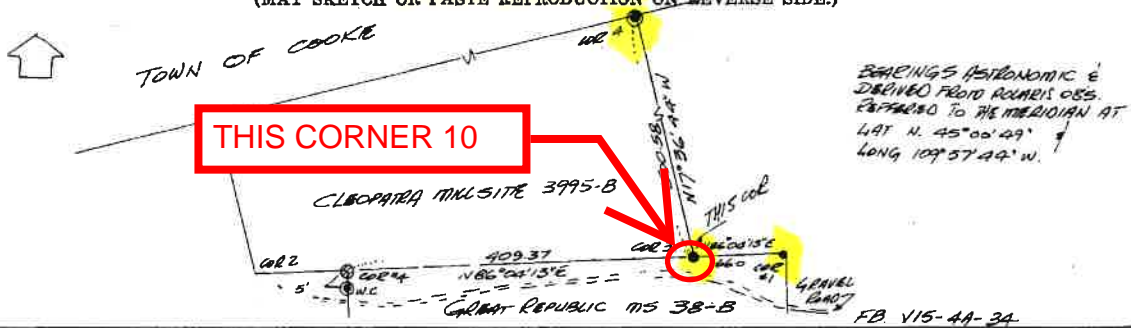
1979 - Location was precalculated as no trace of original stone could be found. When digging for setting the survey monument the original stone was found 1/2' below the ground surface 14"x14" at the top with a record depth of 30 inches. The stone is absolutely solid and straight and clearly marked 3-3395B on the NW face.

#### DESCRIPTION OF MONUMENT AND ACCESSORIES ESTABLISHED TO PERPETUATE THE ORIGINAL LOCATION OF THIS CORNER:

As the stone is a beautiful monument I drilled a hole for a brass cap rockpost at the precalculated location which falls practically at the top center of the stone. The cemented rockpost cap is marked: Set a 6' steel fence post 1' NE of the corner monument. Made no BI as area used as park. Date of work: SEP 17 1979



#### SKETCH, WITH COURSE AND DISTANCE TO ADJACENT CORNERS IF DETERMINED IN THIS SURVEY. (MAY SKETCH OR PASTE REPRODUCTION ON REVERSE SIDE.)



Surveyor's Seal

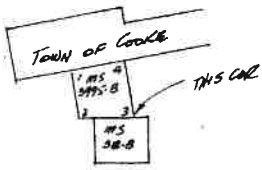
I, T. J. EMBREUS certify that the information shown herein is true and correct.

T. J. Embreus  
Signature of Ground Party Chief

I, James B. Spring certify that I have carefully performed or reviewed the work done on the diagrammed corner as reported on this recordation form and approve the same.

James B. Spring  
Signature of Surveyor

DIAGRAM OF CORNER:  
DEC 25, 195, R 14E  
N.



PARK COUNTY, MT.  
= Corner recorded on the sheet

1535-S  
Registration Number

163954

Office of Clerk and Recorder, County of Park

This "corner record" was filed for record on the 30<sup>th</sup> day of January 1981, was noted on the cross-index plat and is assigned page No. 18, in book No. ONE

Form 125 - 45227 Fee 50<sup>¢</sup> Cross Index No. PR. 910 T. 95 R. 14 E Mer.

See special cross index

Margaret Emmeck  
County Official