

PT#14

CERTIFIED LAND CORNER RECORDATION

DESCRIPTION OF CORNER EVIDENCE FOUND, AND ORIGINAL RECORD (IF KNOWN)

Corner No. 3 - Cooke City - Set a post 4 ft. long 8 ins. square, 2 ft. in the ground with mound of earth around it - marked it - "C.C. 3." for corner No. 3.

Corner No. 2 - Blue Bird Mill Site - Identical with Cor. No. 3 of Town Site of Cooke City. A sandstone, 9 x 8 x 15 ins., set 13 ins. in the ground in mound of stones, mkd. 2-10855; from which no substantial bearing objects are available.

DESCRIPTION OF MONUMENT AND ACCESSORIES ESTABLISHED TO PERPETUATE THE ORIGINAL LOCATION OF THIS CORNER:

Date of work: SEP 12 - 79

Recordation Cor. #3 Cooke City and Cor. #2 Blue Bird Mill Site 10855

Found no trace of original wooden post nor of a stone mentioned in the notes of Blue Bird Mill Site 10855 Cor. #2. Dug a hole 5' deep to original ground as area filled, 8' E&W, 4' N&S at rec. distance and from established intersection points Cleopatra and Idabelle Mill Sites. No trace of stone. Established the true Cor. #3 by calculations from balanced coordinates. Set a 2 1/2 ins. by 30 ins. al. pipe 26 ins. in the ground with the al. cap marked:

Made BTS

12" pine S59E 14.79' mkd. 3 Cooke BT

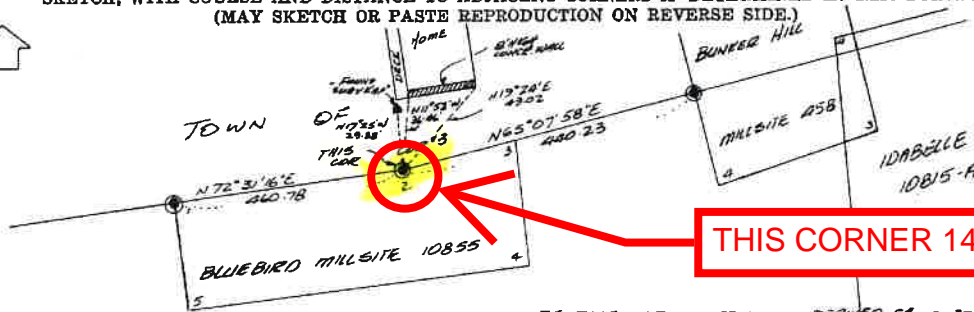
12" pine S15E 16.11' mkd. 3 Cooke BT

14" pine S17W 43.47' mkd. 3 Cook BT

Set a 6' steel fence post 1.5' south of the cor. mon.



SKETCH, WITH COURSE AND DISTANCE TO ADJACENT CORNERS IF DETERMINED IN THIS SURVEY. (MAY SKETCH OR PASTE REPRODUCTION ON REVERSE SIDE.)



BEARINGS ARE AZIMUTHIC, DERIVED FROM POLARIS OBSERV. REFERRED TO THE MER. AT LAT. N. 45°00'29" & LONG. W. 109°57'44"

FB. V.15-4A-80

Surveyor's Seal

I, T.J. Embricus certify that the information shown herein is true and correct.

Signature of T.J. Embricus

Signature of Ground Party Chief

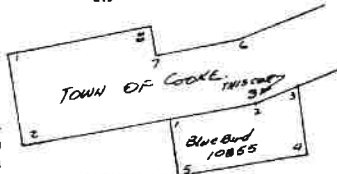
I, James B. Spring certify that I have carefully performed or reviewed the work done on the diagrammed corner as reported on this recordation form and approve the same.

Signature of James B. Spring

Signature of Surveyor

DIAGRAM OF CORNER: SEC 25, T9S, R4E

N.



PAGE COUNTY. = Corner recorded on the sheet

1535-S Registration Number

163957

Office of Clerk and Recorder, County of Park

This "corner record" was filed for record on the 30th day of January 1981, was noted on the cross-index plat and is assigned page No. 21, in book No. ONE

Signature of Margaret Monical, County Official

Form 125-45227 Fee 50.00

Cross Index No. NO. D-11 T. 95 R. 14E Mer.

See special cross index