

PT# 25726

CERTIFIED LAND CORNER RECORDATION

DESCRIPTION OF CORNER EVIDENCE FOUND, AND ORIGINAL RECORD (IF KNOWN)

Set a post 4 ft. long 8 ins. square 2 ft. in the ground with mound of earth around it -- marked "C.C.8" for Corner No. 8.

DESCRIPTION OF MONUMENT AND ACCESSORIES ESTABLISHED TO PERPETUATE THE ORIGINAL LOCATION OF THIS CORNER:

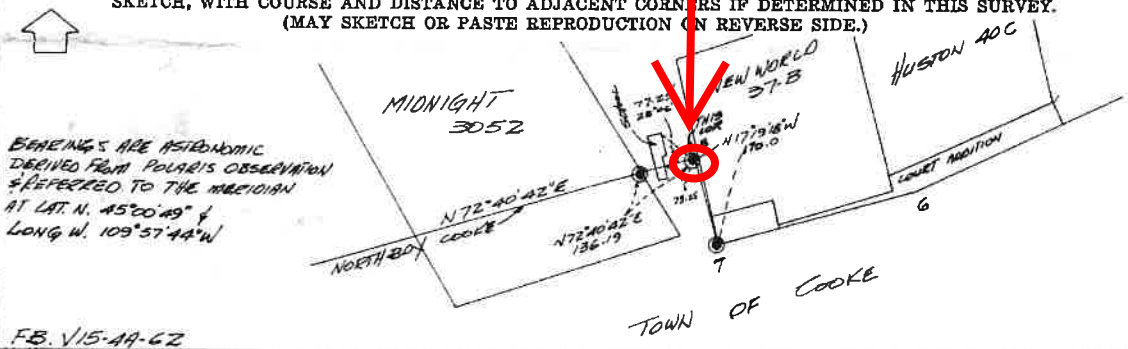
Date of work: July 29 1980

At Corner #8 no trace of original corner post. Corner re-established by proportioning between ties along north boundaries of Cooke. At the calculated position set a 2 1/2"x30" aluminum pipe 26" in the ground with the brass cap marked: Raised a collar of stone around the corner.



THIS CORNER 25

SKETCH, WITH COURSE AND DISTANCE TO ADJACENT CORNERS IF DETERMINED IN THIS SURVEY. (MAY SKETCH OR PASTE REPRODUCTION ON REVERSE SIDE.)



FB. V15-AA-62

Surveyor's Seal

I, T. J. Embrey
certify that the information shown herein is true and correct.
T. J. Embrey
Signature of Ground Party Chief

I, James B. Spring
certify that I have carefully performed or reviewed the work done on the diagrammed corner as reported on this recordation form and approve the same.
James B. Spring
Signature of Surveyor

1535-S
Registration Number

DIAGRAM OF CORNER:

N.
SEE ABOVE
4" IN
SE 1/4 NW 1/4 S. 25, T95, R14E

PARK COUNTY
= Corner recorded on the sheet

163987

Office of Clerk and Recorder, County of Park

This "corner record" was filed for record on the 30th day of January, 1981, was noted on the cross-index plat and is assigned page No. 51, in book No. ONE @ 12:05 PM Margaret Monahan

Clerk and Recorder
Park County, Montana
By Kathryn A. Gray
Mer.

Form 125-45227 Fee 50¢

Cross Index No. KL:78 T. 95 R. 14E

See special cross index