

CERTIFIED LAND CORNER RECORDATION

DESCRIPTION OF CORNER EVIDENCE FOUND, AND ORIGINAL RECORD (IF KNOWN)

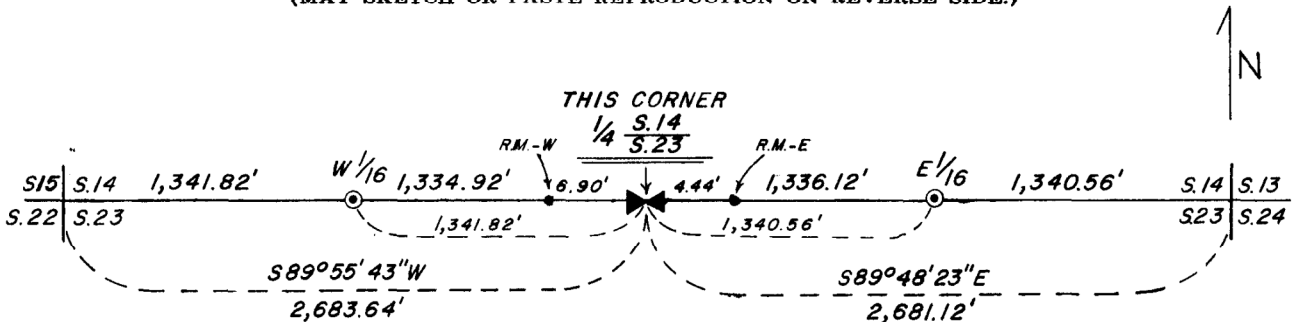
Found a granite stone measuring 6"x8½"x4" above ground firmly set in the ground with ¼" on north face and a "x" chiseled on the top. A 5/8" center-punched rebar 7" above ground is on the north side of the stone. The stone is surrounded by a 3-foot diameter ring of stone. (Record: East on a true line bet, Secs. 14 and 23. Var. 19° E. 40. chs. Set granite stone 12x10x6 in. 9 in. in the ground for ¼ sec. cor. marked ¼ on N. face and raised a mound of stone alongside. Pits impracticable).

DESCRIPTION OF MONUMENT AND ACCESSORIES ESTABLISHED
TO PERPETUATE THE ORIGINAL LOCATION OF THIS CORNER:

Date of work: 4/24/81

Darkened the "x" and the scribed ¼" and painted the stone orange. Set two R.M.'s (5/8"x2" rebar with aluminum Surv-Kap and a mound of stone around each) such that R.M. West bears S 89°55'43" W, 6.90 feet and R.M. East bears S 89°48'23" E, 4.44 feet. Set an inverted T-bar metal fence post painted orange 2.3 feet to SOUTH of stone.

SKETCH, WITH COURSE AND DISTANCE TO ADJACENT CORNERS IF DETERMINED IN THIS SURVEY.
(MAY SKETCH OR PASTE REPRODUCTION ON REVERSE SIDE.)



Surveyor's Seal



I, Fred L. Hall
certify that the information shown herein is true and correct.

Fred L. Hall
Signature of Ground Party Chief

I, Thomas J. Hallin
certify that I have carefully performed or reviewed the work done on the diagrammed corner as reported on this recordation form and approve the same.

Thomas J. Hallin
Signature of Surveyor

DIAGRAM OF CORNER:

N. QUARTER - SECTION
CORNER
S.14
S.23



T.9S., R.8E.

= Corner recorded on the sheet

287 E.S.
Registration Number

165555

Office of Clerk and Recorder, County of Park

This "corner record" was filed for record on the 5th day of June 1981, was noted on the cross-index plat and is assigned page No. 28, in book No. One @ 4:16 pm

Margaret Monical
County Official

Form 125 Fee 1.00
State Publishing Co., Helena, Mont.

Cross Index No. N 19 T. 980 R. 8E Mer.