

**CERTIFIED LAND CORNER RECORDATION**

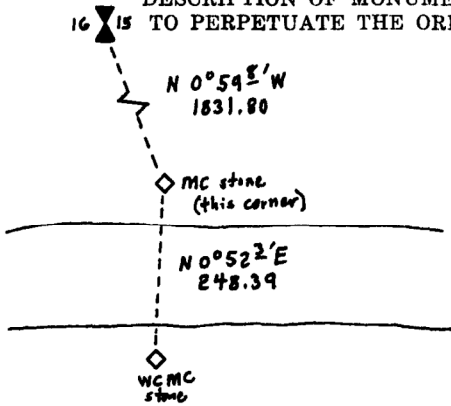
**DESCRIPTION OF CORNER EVIDENCE FOUND, AND ORIGINAL RECORD (IF KNOWN)**

From Book 1697, Page 12 (460): "Set sandstone 18x14x6 in., 12 in. in the ground for meander corner to frac. Secs 15 & 16, marked MC & raised a mound of stone 2 ft. high, 4½ ft. base alongside..."

Found: Granular granite stone, 15 x 12 x 6 ins., marked "MC" on north side, leaned downhill (south). Possible scattered cairn.

**DESCRIPTION OF MONUMENT AND ACCESSORIES ESTABLISHED TO PERPETUATE THE ORIGINAL LOCATION OF THIS CORNER:**

Date of work: 4/4/81



Set stone more firmly & straightened.  
Cut "x" on top  
Rebuilt cairn

Bearings from "true north", C/S 277

SKETCH, WITH COURSE AND DISTANCE TO ADJACENT CORNERS IF DETERMINED IN THIS SURVEY. (MAY SKETCH OR PASTE REPRODUCTION ON REVERSE SIDE.)

Surveyor's Seal



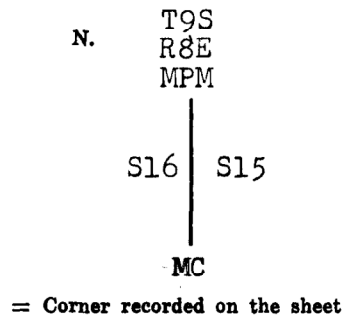
I, \_\_\_\_\_  
certify that the information shown herein is true and correct.

Signature of Ground Party Chief

I, Henry A. Rate  
certify that I have carefully performed or reviewed the work done on the diagrammed corner as reported on this recordation form and approve the same.

Henry A. Rate  
Signature of Surveyor

**DIAGRAM OF CORNER:**



3716S  
Registration Number

Office of Clerk and Recorder, County of Park **168581**

This "corner record" was filed for record on the 28<sup>th</sup> day of January, 1982, was noted on the cross-index plat and is assigned page No. 30, in book No. one Margaret Monical  
County Official

3 Form 125-7887 no fee

Cross Index No. M-13 T. 92 R. 86 Mer.