

CERTIFIED LAND CORNER RECORDATION

DESCRIPTION OF CORNER EVIDENCE FOUND, AND ORIGINAL RECORD (IF KNOWN)

From Book 1697, P470(21): "Set a sandstone, 12 x 8 x 8 ins., 8 ins. in the ground for $\frac{1}{4}$ sec. cor., marked $\frac{1}{4}$ on W. face and raised a mound of stone alongside....."

From Book 8139, P42:

"From the $\frac{1}{4}$ sec. cor. of Secs. 7 and 8, which is a granite stone, 7 x 6 x 5 ins. above ground, marked and witnessed as described in the official record. S $0^{\circ}09'$ W on true line between Secs. 7 and 8....."

"2.64: Intersect the revised N. bdy. of Yellowstone National Park. Set an iron post, 3 ft. long, 2 ins. diam., 27 ins. in the ground, for closing corner of Secs. 7 and 8, with brass cap marked....."

DESCRIPTION OF MONUMENT AND ACCESSORIES ESTABLISHED TO PERPETUATE THE ORIGINAL LOCATION OF THIS CORNER:

Date of work: Feb. 12, 1984

Found: Granular volcanic stone, 8 x 7 ins., 5 ins. out, solidly set.

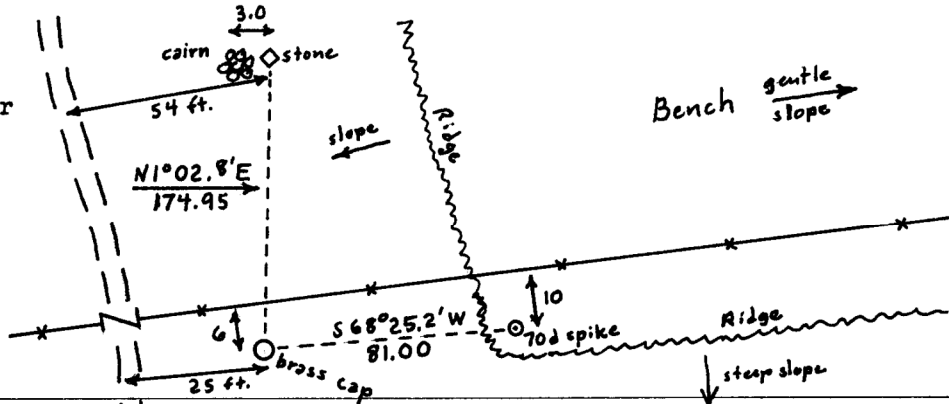
Brass cap on 2-in. diam. iron pipe, 10 ins. out.



Done: Cut "x" on top of stone.

SKETCH, WITH COURSE AND DISTANCE TO ADJACENT CORNERS IF DETERMINED IN THIS SURVEY. (MAY SKETCH OR PASTE REPRODUCTION ON REVERSE SIDE.)

See sketch attached to corner record for $N\frac{1}{4}$ cor. Sec. 8 for remote ties.



Surveyor's Seal

I, _____, certify that the information shown herein is true and correct.

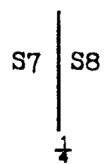
Signature of Ground Party Chief

I, Henry A. Rate, certify that I have carefully performed or reviewed the work done on the diagrammed corner as reported on this recordation form and approve the same.

Henry A. Rate
Signature of Surveyor

DIAGRAM OF CORNER:

N. T9S
R8E
MPM



= Corner recorded on the sheet

3716S
Registration Number

180330

Office of Clerk and Recorder, County of Park

This "corner record" was filed for record on the 11th day of May, 1984, was noted on the cross-index plat and is assigned page No. 60, in book No. one.

No Fee

James Jennings
County Official

Cross Index No. 2-5 T. 9S R. 8E Mer.