

INSTRUCTIONS

1. Original and/or subsequent record used to evaluate the corner position.
2. Description of evidence found, note discrepancies in the record, state method of establishing lost or obliterated corners.
3. Description of monument and accessories set to perpetuate the corner position.
4. Sketch of corner, show all pertinent data which can best be shown in a sketch example, corner marking, topography ties, position of accessories, etc.
5. Certification must be signed and sealed by Land Surveyor registered in the State of Montana.
6. Fill in Cross Index & Section Diagram at bottom of sheet.

CERTIFIED CORNER RECORDATION

Corner NE corner Sec. 16 T. 9 S. R. 8 E. P.M.M. Park County

1. In July 1883 U.S. Deputy Surveyor Rodney W. Page set a Sandstone 20"x12"x10" 15" in the ground for a corner to sections 9, 10, 15 and 16 marked 4 notches on south and 3 on east edges and raised a mound of stone along side. Pits were impractical.

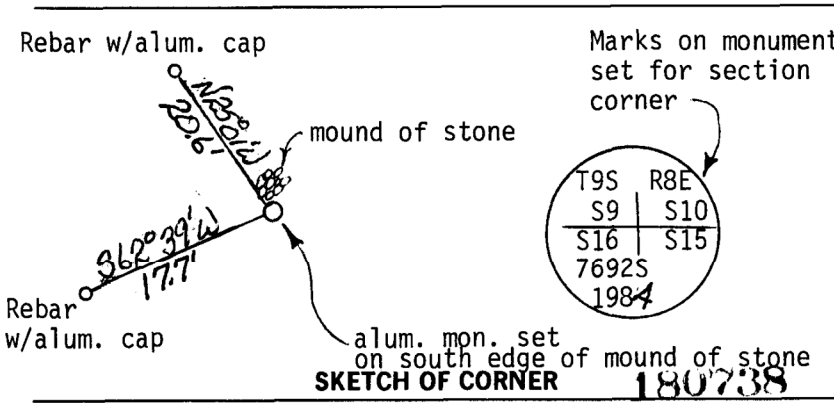
In 1916 George F. Rigby and Clarence K. Streit in a retracement of the line between sections 10 and 15, ran west between said sections and intersected the north-south line 10 lks. north of the corner of sections 9, 10, 15 and 16 which was a Granite Stone 8"x8"x10" above ground, firmly set, marked as described by the surveyor general and at that time they rebuilt the mound of stone, 2' base, 1½' high North of corner.

2. I found a mound of stone 2' base at the approximate G.L.O. distance east, west and north. I accepted the mound of stone as the same mound as set in the 1916 retracement survey. After an exhausting search of the area I found no trace of the section corner stone. Therefore, I set an aluminum monument as described below, on the south edge of the mound of stone. I then rebuilt the mound of stone.

3. Set 2½"x30" aluminum pipe 27" in the ground with 3 3/4" aluminum cap marked as indicated below.

Set ½"x24" rebar w/alum. cap S62 39'W, 17.7' marked RM 1

Set ½"x24" rebar w/alum. cap N25 01'W, 20.6' marked RM 2



CERTIFICATION

I, Steven J. Barber
certify the information shown herein is true and correct.

Steven J. Barber
Signature of Subordinate Party Chief

I, Michael D. Waldon
certify that this Corner Record correctly represents work performed by me or under my direction in compliance with the "Corner Recordation Act" (70-29-101, et seq., M.C.A.)

Michael D. Waldon
Signature of Surveyor & Seal

Date: 3/84 Reg. No. 7692 S
Employer: U.S. Forest Service

Office of Clerk and Recorder, County of Park. This "corner record" was filed for record on June 11, 1984 @ 12:18 PM was noted on the cross-index plat and is assigned page No. 76, in book No. one

Jane Jensen
County Official

No Fee

