

**CERTIFIED CORNER RECORDATION**

Corner Meander Corner Sections 5/8 T. 9 S R. 8E P.M.M. Park County

**1. GLO Record:**

R.W. Page, July, 1883:

- As the line bet. Secs. 5 and 8 will probably be fractional I run East on a true line bet. Secs. 5 and 8. Var 19° E. Over rolling land
- 15 Wagon road to Park course S. 20 E.
- 23.70 Road bed of Park branch N.P.R.R. course S. 60 E.
- 36 Left bank of Yellowstone River. Set sandstone 16x14x4 in. 11 in. in the ground for meander cor. to frac't Secs. 5 and 8 marked M.C. and raised a mound of stone 2 ft. high 4 1/2 ft. base alongside. Pits impracticable.

G.R. Rigby and C.K. Streit, August, 1914:

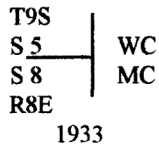
Thence I run East on a true line bet. secs. 5 and 8.

- 36.00 To left bank of Yellowstone River, bears North and South, course North. I am unable to find trace of meander corner.

Bandy, 1933:

Thence S 89°49'E. on a true line bet. secs. 5 and 8. Corner sets under a wire fence, bears N. and S. Over rolling land, across cultivated field.

- 13.60 Fence, bears N. and S.
- 14.00 Road, bears N. and S.
- 14.40 Fence, bears N. and S.
- 24.05 Northern Pacific Railway, track, bears NW. and SW.
- 36.00 No trace of the meander cor. of secs. 5 and 8 was found.
- Set an iron post, 3 ft. long, 1 in diam., 27 ins. in the ground, for witness cor. to the meander cor., of secs. 5 and 8, with brass cap marked



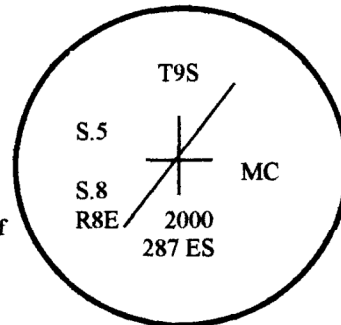
- raise a mound of stone, 3 ft. base, 2 ft. high, W. of cor.
- 36.44 The true proportionate point for the meander cor. of secs. 5 and 8, on the left bank of Yellowstone River

**2. Evidence found, August, 2000:**

None. Corner set by T.J. Hallin, 287 ES, during previous surveys was destroyed.

**3. Perpetuation, August 24, 2000:**

Set a 5/8" x 24" rebar with a 2" aluminum cap. Built a 1.5 ft. diameter cairn of rock around the cap. Cap marked as shown to the right:



SEE REVERSE SIDE

**Sketch of Corner**

Certification

I, Norbert Hackl  
 certify the information shown herein is true and correct.

Signature Ground Party Chief

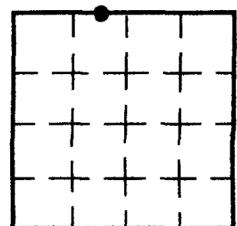
I, Bernard T. Hallin  
 certify that this Corner Record correctly represents work performed by me or under my direction in compliance with the "Corner Recordation Act" (70-23-101 Stat., M.C.A.)

Signature of Surveyor & Seal

Date: 9/8/00 Reg. No. 10355 LS  
 Employer: Thomas J. Hallin, 287 ES

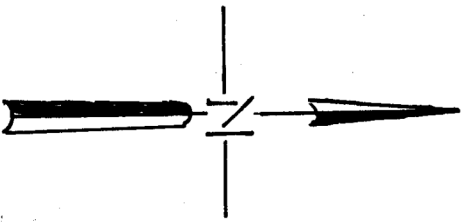
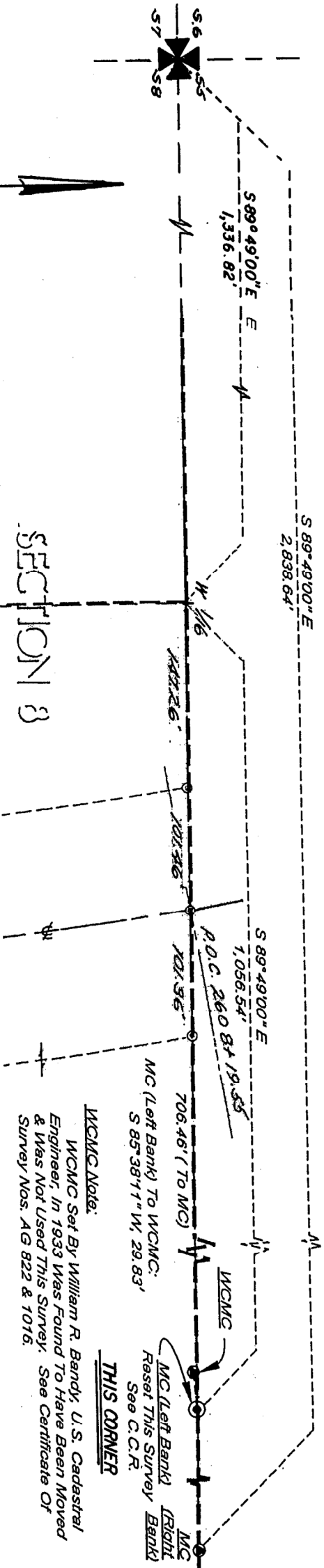
Office of Clerk and Recorder, County of Park. This "corner record" was filed for record on Sept 18, 2000 @ 12:25 p was noted on the cross-index plat and is assigned page. No. 105 in book No. One Dale Berumen Deputy County Official **285303**

Sec. 8



Cross Index No. E-6-7 T9S R8E PMM

# SECTION 5



**WCMC Note:**  
 WCMC Set By William R. Bandy, U.S. Cadastral  
 Engineer, In 1933 Was Found To Have Been Moved  
 & Was Not Used This Survey. See Certificate Of  
 Survey Nos. AG 822 & 1016.

**THIS CORNER**  
 MC (Left Bank)  
 Raser This Survey  
 See C.C.R.

**Not To Scale**