

INSTRUCTIONS

1. Original and/or subsequent record used to evaluate the corner position.
2. Description of evidence found, note discrepancies in the record, state method of establishing lost or obliterated corners.
3. Description of monument and accessories set to perpetuate the corner position.
4. Sketch of corner, show all pertinent data which can best be shown in a sketch example, corner marking, topography ties, position of accessories, etc.
5. Certification must be signed and sealed by Land Surveyor registered in the State of Montana.
6. Fill in Cross Index & Section Diagram at bottom of sheet.

**PLSS CORNER RECORD**

1/4 Corner SECTION 23 T. 9S R. 8E P.M.M. PARK County

ORIGINAL RECORD: (R.W. Page 1883)

SUBSEQUENT RECORD: (Not Located)

EVIDENCE FOUND: Found 3 1/2" aluminum cap stamped 1983, S1/4 S23, T9S R8E, 1196, 287ES.

PERPETUATION: As a replacement to the existing survey monument placed by 287ES in 1983 due to construction; Set a 3/4" diameter x 30" long rebar monument, set 8" below the lid of an aluminum monument can set in concrete, with 3 1/2" aluminum cap marked as shown below

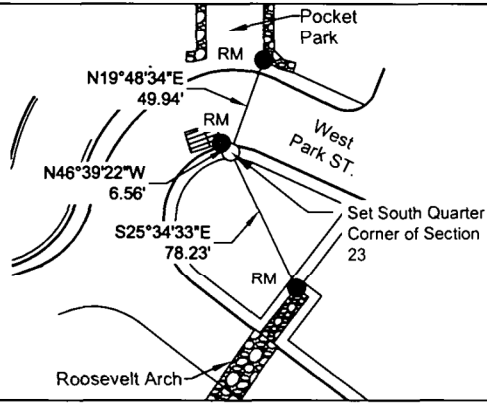
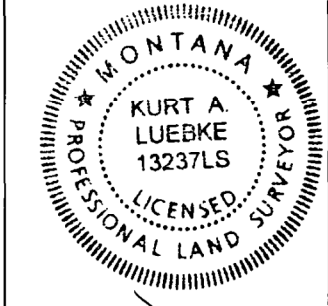
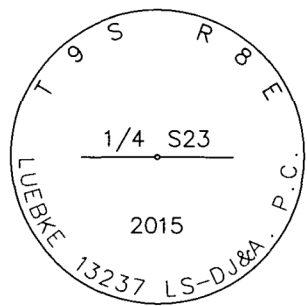
Reference Monument, N19°48'34"E, 49.94 feet to Southwest corner of stone pillar.

Reference Monument, N46°39'22"E, 6.56 feet to Southeast corner of storm grate.

Reference Monument, S25°34'33"E, 78.23 feet to Northwest corner of stone column on Roosevelt arch.

Date of Survey: April 2016

NAD 83 coordinates for this corner:  
 Latitude = 45°01'47.355"N Longitude = 110°42'31.285"W  
 NOTE: These coordinates are to be used as a search tool only.

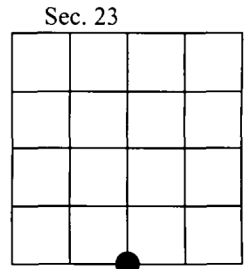


(Not to Scale) SKETCH OF CORNER

CERTIFICATION  
 I, John Shirey  
 certify the information shown herein is true and correct.  
 Signature Ground Party Chief  
 I, Kurt Luebke  
 certify that this Corner Record correctly represents work performed by me or under my direction in compliance with the "Corner Recordation Act" (70-22-101 et seq., M.C.A.)  
 Signature of Surveyor & Seal  
 Date: June 9, 2016 Reg. No. 13237LS  
 Employer: DJ&A P. C.

Office of Clerk and Recorder, County of \_\_\_\_\_ This "corner record" was filed for record on \_\_\_\_\_, was noted on the cross-index plat, and is assigned Page No. 115, in Book No. one.

392919 Fee: \$0.00  
 Park County, MT Filed 6/29/2016 At 10:29 AM  
 Maritza H Reddington, Clk & Rcdr By JB PS



• - corner this sheet

Cross Index No. R-19 T. 9S R. 8E PMM