

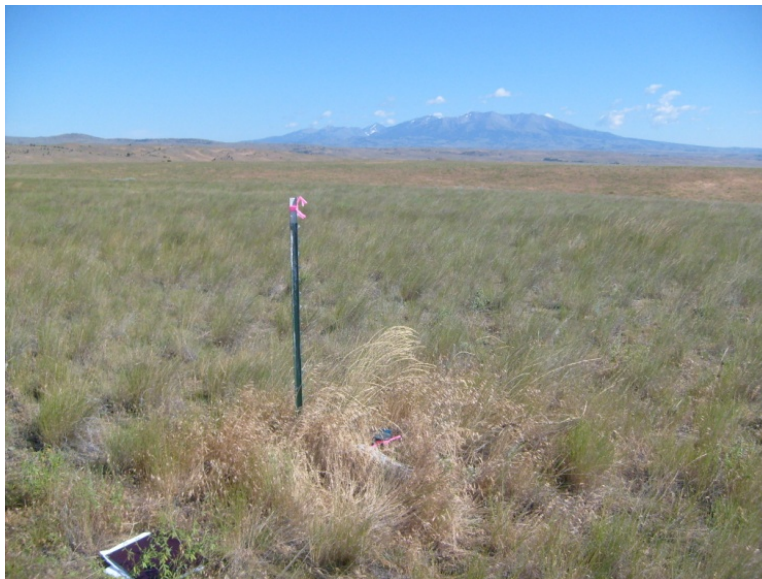
PLSS Corner Collection System Data Sheet

Meridian: MT20 Tier: T1S Range: R12E Section(s): 20/21/28/29 County: Park

GCDB Point ID: MT200010S0120E0 300300

Employee Name: Dan Boers Date: 7/22/2010 Time: 10:00 am

Found: An iron post, 2½" diameter extends 5" above ground with a U.S.D.I. BLM, BC 3¼" diameter; a collar of stone, 2 ½' diameter around monument; a steel T-post 1.2' west of monument. See CCR 1-44.



Latitude: 45°43'35.3660" N Longitude: 110°15'44.5416" W Datum: NAD83(2007)

Approximate orthometric elevation: 4517 ft.

This corner was located as part of a PLSS enhancement project. The location of this corner was not used as control for any legal surveys during this exercise. Horizontal accuracy 1 meter or less.