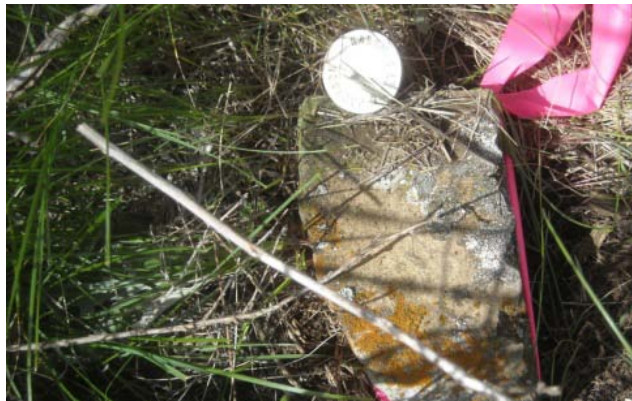


PLSS Corner Collection System Data Sheet

Meridian: PMMTier: 9NRange: 59ESection(s): 20, 21, 28, 29County: FallonGCDB Point ID: **MT200090N0590E0300300**Employee Name: JD IngrahamDate: 6/25/2011Time: 1:45

Found: Sandstone, 8"x4", 4" above ground with a KLJ aluminum cap on North side of stone. Stone is under an East-West fence, ± 50' West of fence corner, with fences running North, South, East, and West. A MARLS tag on a railroad tie brace post bears East, 8' distant. Stone is marked with 4 notches on East side.



Latitude: 46°30'39.3599" N

Longitude: 104°18'46.4089" W

Datum: NAD83(2007)

Approximate orthometric elevation: 2999 ft.

This corner was located as part of a PLSS enhancement project. The location of this corner was not used as control for any legal surveys during this exercise. Horizontal accuracy 1 meter or less.