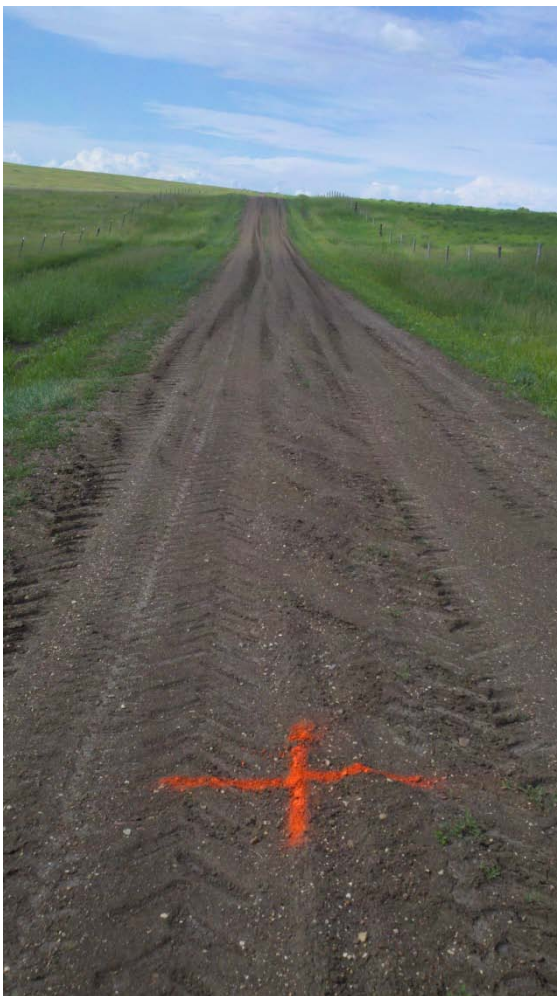


## PLSS Corner Collection System Data Sheet

Meridian: PMMTier: 10NRange: 60ESection(s): 14, 15County: FallonGCDB Point ID: **MT200100N0600E0500440**Employee Name: Ryan DeeDate: 6/26/2011Time: 2:50

Found: Unable to locate original corner, therefore I accept a road/fence line intersection as the best available evidence of the corner position. This is a disputable position. From said position a gravel county road bears North and South, and Fences extend East and West from the 60' North-South right-of-way fence.



Latitude: 46°37'11.3883" N

Longitude: 104°08'39.9932" W

Datum: NAD83(2007)

Approximate orthometric elevation: 3073 ft.

This corner was located as part of a PLSS enhancement project. The location of this corner was not used as control for any legal surveys during this exercise. Horizontal accuracy 1 meter or less.