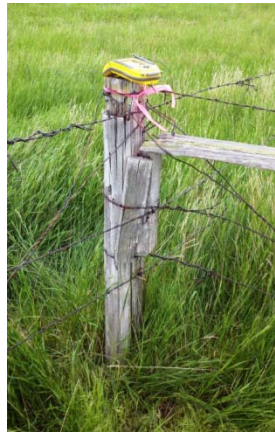


PLSS Corner Collection System Data Sheet

Meridian: PMMTier: 16NRange: 53ESection(s): 26, 27, 34, 35County: DawsonGCDB Point ID: **M T 2 0 0 1 6 0 N 0 5 3 0 E 0 5 0 0 2 0 0**Employee Name: Ryan DeeDate: 6/16/2011Time: 4:20

Found: After diligent search unable to locate original monument therefore, accept fence corner post as best evidence of corner position. Fences extend North, South, and East. Monument is 15' South of a two-track road bearing Northwest and Southeast. Corner is located on a gradual West slope.



Latitude: 47°06'32.6576" N

Longitude: 104°59'04.6238" W

Datum: NAD83(2007)

Approximate orthometric elevation: 2751 ft.

This corner was located as part of a PLSS enhancement project. The location of this corner was not used as control for any legal surveys during this exercise. Horizontal accuracy 1 meter or less.