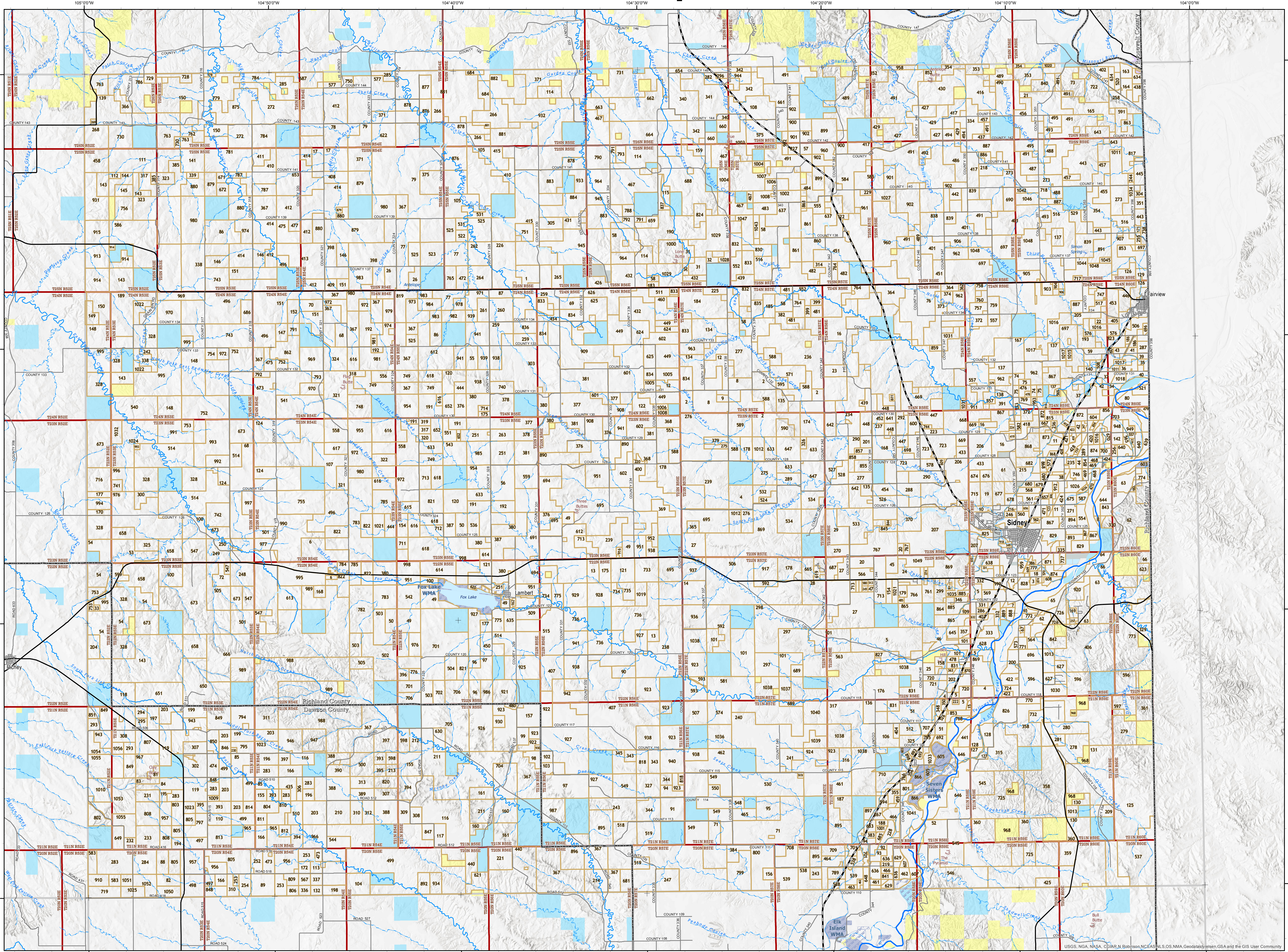


Sidney - 47104b Private Land Ownership Identification



- BLM
- National Park Service
- Other Federal Lands
- US Fish and Wildlife Service
- US Forest Service
- MT Fish, Wildlife & Parks
- State Trust Lands
- Other State Lands
- Local Government
- Rural Parcels
- Wildlife Management Area
- Indian Reservations
- County Boundary
- Township
- Lakes - Reservoirs
- Interstate highway
- Major Highway
- Other Highway
- City-County Road
- Primitive Road
- River
- Stream/Creek
- Intermittent Creek

SOURCES / ACKNOWLEDGEMENTS

This map was produced as a joint effort between Montana Fish, Wildlife & Parks (FWP) and the Geographic Information Program (GeoInfo) of the Montana State Library (MSL), in response to Montana Code Annotated 87-3-308, which directs the FWP to "work cooperatively with all state and federal public management agencies ... to develop accurate land ownership maps ... in the State."

PLEASE READ - NOTES:

Parcel label numbers correspond to the Private Land List which may be downloaded from the Map Gallery Web site, http://apps.msl.mt.gov/Geographic_Information/Maps/Land_Ownership/Default.aspx

Not all legend items may appear on this map.

Features shown on this map do not imply public access to any lands.

The land status data displayed on this map may not be complete and may contain errors in boundary locations and/or coding.

About the DATA:

The private land data were developed for the Montana Cadastral Database Project. These data are provided through a cooperative effort between the Montana State Library - Geographic Information, the Montana Department of Revenue (DOR), other state agencies, local governments, USFS BLM and private enterprise. Lands depicted on THIS MAP represent single ownership of contiguous parcels that are at least 40 acres in size. The MSL GeoInfo program maintains the GIS cadastral layer and the DOR maintains the private ownership information. The Montana Cadastral Database is comprised of taxable parcels (fee land) and public land (exempt property).

The public land data is from the Montana State Library public lands data collection. Much of this data was originally from a data cooperative effort between the Montana Department of Administration (DOA) and the Montana Department of Revenue (DOR) other state agencies, local governments, USFS BLM and private enterprise. The data was grouped by very broad government categories for display on THIS MAP with general preference for types of land management that may be more friendly to hunting with appropriate permissions and regulations observed.

This map has not been verified against county or Montana Department of Revenue records. The base scale for the public ownership data is 1:100,000, though many of the recent maps incorporate data digitized from 1:24,000 scale maps or survey data. Private ownership data is accurate to scales of 1:24,000 or smaller.

Montana Spatial Data Infrastructure (MSDI) Data: Highways and Roads are Transportation Framework data. Rivers, Streams and Lakes are Montana FWP Data, enhanced by Montana National Hydrography Data. Parcel data from Department of Revenue (DOR) Cadastral data.

DISCLAIMERS:

The MT State Library, MT Natural Heritage Program, MT Fish, Wildlife & Parks, MT Dept. of Administration and MT Dept. of Revenue make NO representation or warranties whatsoever with respect to the accuracy or completeness of the data contained in these maps and assumes NO responsibility for the suitability of these data for a particular purpose.

These agencies will NOT be liable for any damages incurred as a result of errors displayed here. The ownership boundaries shown on this map are NOT based on land survey data and are NOT a substitute for property surveys. This map displays public and private land ownership information derived from several sources and continues to be corrected and updated.

| | | | | | | | | | | | | |
|--------|--------|--------|--------|--------|--------|--------|--------|--------|--------|--------|--------|--------|
| 48110b | 48115b | 48114b | 48113b | 48112b | 48111b | 48110a | 48109b | 48108b | 48107b | 48106b | 48105b | 48104b |
| 48116a | 48115a | 48114a | 48113a | 48112a | 48111a | 48110a | 48109a | 48108a | 48107a | 48106a | 48105a | 48104a |
| 47116b | 47115b | 47114b | 47113b | 47112b | 47111b | 47110b | 47109b | 47108b | 47107b | 47106b | 47105b | 47104b |
| 47116a | 47114a | 47113a | 47112a | 47111a | 47110a | 47109a | 47108a | 47107a | 47106a | 47105a | 47104a | |
| 48111b | 48114b | 48113b | 48112b | 48111b | 48110b | 48109b | 48108b | 48107b | 48106b | 48105b | 48104b | |
| 48114a | 48113a | 48112a | 48111a | 48110a | 48109a | 48108a | 48107a | 48106a | 48105a | 48104a | | |
| 48114b | 48113b | 48112b | 48111b | 48110b | 48109b | 48108b | 48107b | 48106b | 48105b | 48104b | | |
| 48114a | 48113a | 48112a | 48111a | 48110a | 48109a | 48108a | 48107a | 48106a | 48105a | 48104a | | |
| 48113b | 48112b | 48111b | | | | | | | | | | |
| 48113a | 48112a | 48111a | | | | | | | | | | |