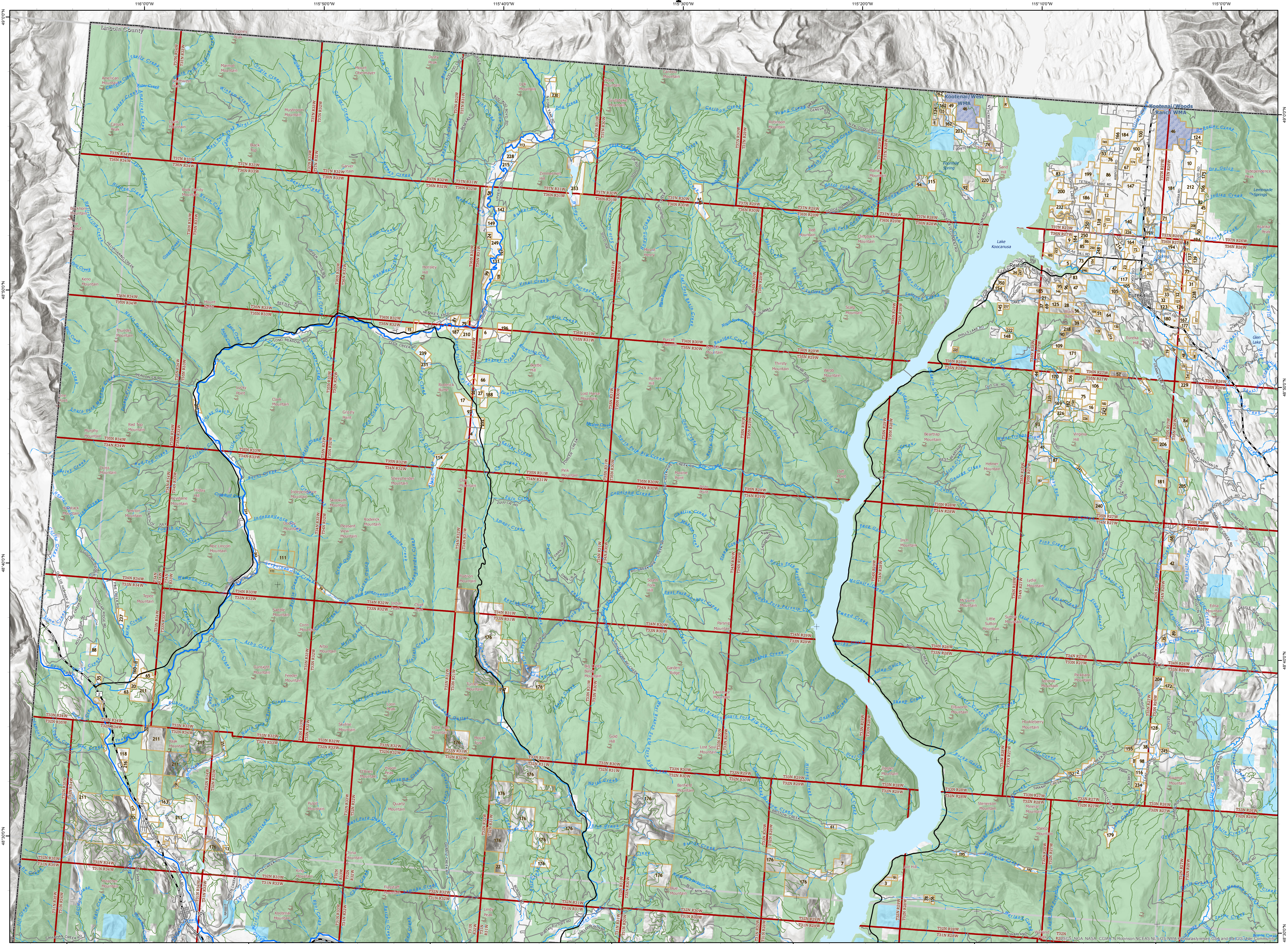


# Yaak River - 48115b Private Land Ownership Identification



- BLM
- National Park Service
- Other Federal Lands
- US Fish and Wildlife Service
- US Forest Service
- MT Fish, Wildlife & Parks
- State Trust Lands
- Other State Lands
- Local Government
- Rural Parcels
- Wildlife Management Area
- Indian Reservations
- County Boundary
- Township
- Lakes - Reservoirs
- Interstate highway
- Major Highway
- Other Highway
- City-County Road
- Primitive Road
- River
- Stream/Creek
- Intermittent Creek

**SOURCES / ACKNOWLEDGEMENTS**

This map was produced as a joint effort between Montana Fish, Wildlife & Parks (FWP) and the Geographic Information Program (GeoInfo) of the Montana State Library (MSL), in response to Montana Code Annotated 87-3-308, which directs the FWP to "work cooperatively with all state and federal land management agencies ... to develop accurate land ownership maps ... in the State."

**PLEASE READ - NOTES:**

Parcel label numbers correspond to the Private Land List which may be downloaded from the Map Gallery Web site, [http://apps.msl.mt.gov/Geographic\\_Information/Maps/Land\\_Ownership/Default.aspx](http://apps.msl.mt.gov/Geographic_Information/Maps/Land_Ownership/Default.aspx)

Not all legend items may appear on this map.

Features shown on this map do not imply public access to any lands.

The land status data displayed on this map may not be complete and may contain errors in boundary locations and/or coding.

**About the DATA:**

The private land data were developed for the Montana Cadastral Database Project. These data are provided through a cooperative effort between the Montana State Library - Geographic Information, the Montana Department of Revenue (DOR), other state agencies, local governments, USFS BLM and private enterprise. Lands depicted on THIS MAP represent single ownership of contiguous parcels that are at least 40 acres in size. The MSL GeoInfo program maintains the GIS Cadastral data and the DOR maintains the private ownership information. The Montana Cadastral Database is comprised of taxable parcels (fee land) and public land (exempt property).

The public land data is from the Montana State Library public lands data collection. Much of this data was originally from a data cooperative effort between the Montana Department of Administration (DOA) and the Montana Department of Revenue (DOR) other state agencies, local governments, USFS BLM and private enterprise. The data was grouped by very broad government categories for display on THIS MAP with general preference for types of land management that may be more friendly to hunting with appropriate permissions and regulations observed.

This map has not been verified against county or Montana Department of Revenue records.

The base scale for the public ownership data is 1:100,000, though many of the recent edits incorporate data digitized from 1:24,000 scale maps or survey data. Private ownership data is accurate to scales of 1:24,000 or smaller.

Montana Spatial Data Infrastructure (MSDI) Data: Highways and Roads are Transportation Framework data, Rivers, Streams and Lakes are Montana FWP Data, enhanced by Montana National Hydrography Data data, Parcel data from Department of Revenue (DOR) Cadastral data.

**DISCLAIMERS:**

The MT State Library, MT Natural Heritage Program, MT Fish, Wildlife & Parks, MT Dept. of Administration and MT Dept. of Revenue make NO representations or warranties whatsoever with respect to the accuracy or completeness of the data contained in these maps and assumes NO responsibility for the suitability of these data for a particular purpose.

These agencies will NOT be liable for any damages incurred as a result of errors displayed here.

The ownership boundaries displayed on this map are NOT based on land survey data and are NOT a substitute for property surveys.

This map displays public and private land ownership information derived from several sources and continues to be corrected and updated.

48110a	48110b	48110c	48110d	48110e	48110f	48110g	48110h	48110i	48110j	48110k	48110l	48110m	48110n	48110o	48110p	48110q	48110r	48110s	48110t	48110u	48110v	48110w	48110x	48110y	48110z
48111a	48111b	48111c	48111d	48111e	48111f	48111g	48111h	48111i	48111j	48111k	48111l	48111m	48111n	48111o	48111p	48111q	48111r	48111s	48111t	48111u	48111v	48111w	48111x	48111y	48111z
48112a	48112b	48112c	48112d	48112e	48112f	48112g	48112h	48112i	48112j	48112k	48112l	48112m	48112n	48112o	48112p	48112q	48112r	48112s	48112t	48112u	48112v	48112w	48112x	48112y	48112z
48113a	48113b	48113c	48113d	48113e	48113f	48113g	48113h	48113i	48113j	48113k	48113l	48113m	48113n	48113o	48113p	48113q	48113r	48113s	48113t	48113u	48113v	48113w	48113x	48113y	48113z
48114a	48114b	48114c	48114d	48114e	48114f	48114g	48114h	48114i	48114j	48114k	48114l	48114m	48114n	48114o	48114p	48114q	48114r	48114s	48114t	48114u	48114v	48114w	48114x	48114y	48114z
48115a	48115b	48115c	48115d	48115e	48115f	48115g	48115h	48115i	48115j	48115k	48115l	48115m	48115n	48115o	48115p	48115q	48115r	48115s	48115t	48115u	48115v	48115w	48115x	48115y	48115z
48116a	48116b	48116c	48116d	48116e	48116f	48116g	48116h	48116i	48116j	48116k	48116l	48116m	48116n	48116o	48116p	48116q	48116r	48116s	48116t	48116u	48116v	48116w	48116x	48116y	48116z
48117a	48117b	48117c	48117d	48117e	48117f	48117g	48117h	48117i	48117j	48117k	48117l	48117m	48117n	48117o	48117p	48117q	48117r	48117s	48117t	48117u	48117v	48117w	48117x	48117y	48117z
48118a	48118b	48118c	48118d	48118e	48118f	48118g	48118h	48118i	48118j	48118k	48118l	48118m	48118n	48118o	48118p	48118q	48118r	48118s	48118t	48118u	48118v	48118w	48118x	48118y	48118z
48119a	48119b	48119c	48119d	48119e	48119f	48119g	48119h	48119i	48119j	48119k	48119l	48119m	48119n	48119o	48119p	48119q	48119r	48119s	48119t	48119u	48119v	48119w	48119x	48119y	48119z
48120a	48120b	48120c	48120d	48120e	48120f	48120g	48120h	48120i	48120j	48120k	48120l	48120m	48120n	48120o	48120p	48120q	48120r	48120s	48120t	48120u	48120v	48120w	48120x	48120y	48120z