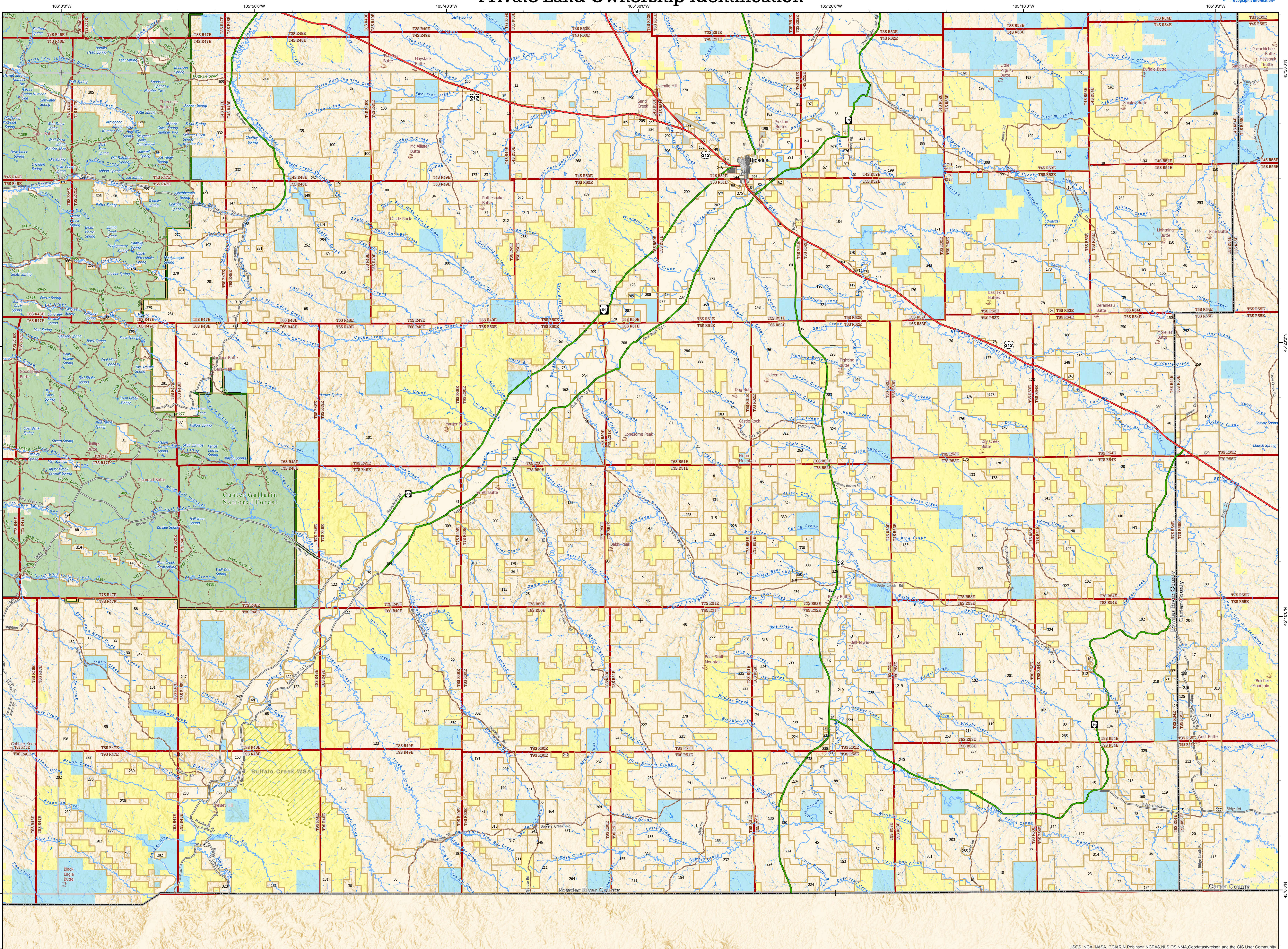


Broadus Quadrangle - 45105a Private Land Ownership Identification



- Management Area Types**
- Conservation Easement
 - Montana Fish Wildlife & Parks, State Park
 - Montana Fish Wildlife & Parks, Wildlife Management Area
 - Montana State Forest
 - USFWS Fish Tech. Center National Fish Hatchery
 - USFWS National Wildlife Refuge
 - USFWS Wildlife Management Area
 - USFWS Wilderness Area
- Public Land Ownership Types**
- BLM Outstanding Natural Area
 - US Bureau of Land Management
 - US Fish and Wildlife Service
 - US Forest Service
 - National Park Service
 - Other Federal Lands
 - MT Fish, Wildlife & Parks
 - State Trust Lands
 - Other State Lands
 - Local Government

- Private Rural Land Parcel > 40 ac.
- County Boundary
- Glacier or Ice Mass
- Lake or Pond
- Marsh or Wetland
- Perennial River or Creek
- Seasonal Creek
- Interstate Highway
- Major Highway Primary
- State Highway Secondary
- Local Road or Street
- Minor Rural
- Local Access Private Road
- Railroad
- Local High Point
- Named Spring

SOURCES / ACKNOWLEDGEMENTS

This map was produced as a joint effort between Montana Fish, Wildlife & Parks (FWP) and the Geographic Information Program (Geoinfo) of the Montana State Library (MSL), in response to Montana Code Annotated 87-3-308, which directs the FWP to "...work cooperatively with all state and federal land management agencies ... to develop accurate land ownership maps... in the State."

PLEASE READ - NOTES:

Parcel label numbers correspond to the Private Land List which may be downloaded from the Map Gallery Web site, http://apps.msl.mt.gov/Geographic_Information/Maps/Land_Ownership/Default.aspx

Not all legend items may appear on this map.

Features shown on this map do not imply public access to any lands.

The land status data displayed on this map may not be complete and may contain errors in boundary locations and/or coding.

About the DATA:

The private land data were developed for the Montana Cadastral Database Project. These data are provided through a cooperative effort between the Montana State Library - Geographic Information, the Montana Department of Revenue (DOR), other state agencies, local governments, USDI BLM and private enterprise. Lands depicted on THIS MAP represent single ownership of contiguous parcels that are at least 40 acres in size. The MSL-Geoinfo program maintains the GIS cadastral layer and the DOR maintains the private ownership information. The Montana Cadastral Database is comprised of taxable parcels (fee land) and public land (exempt property).

The public land data is from the Montana State Library public lands data collection. Much of this data was originally from a data collection effort between the Montana Department of Administration (DOA) and the Montana Department of Revenue (DOR) other state agencies, local governments, USDI BLM and private enterprise. The data was grouped by very broad government categories for display on THIS MAP with general preference for types of land management that may be more friendly to hunting with appropriate permissions and regulations observed.

This map has not been verified against county or Montana Department of Revenue records. The base scale for the public ownership data is 1:100,000, though many of the recent edits incorporate data digitized from 1:24,000 scale maps or survey data. Private ownership data is accurate to scales of 1:24,000 or smaller.

Montana Spatial Data Infrastructure (MSDI) Data: Highways and Roads are Transportation Framework data. Rivers, Streams and Lakes are Montana National Hydrography Data data, enhanced by Montana FWP Data. Parcel data from Department of Revenue (DOR) Cadastral data. Names from Geographic Names Information System (GNIS).

DISCLAIMERS:

The MT State Library, MT Natural Heritage Program, MT Fish, Wildlife & Parks, MT Dept. of Administration and MT Dept. of Revenue make NO representations or warranties whatsoever with respect to the accuracy or completeness of the data contained in these maps and assumes NO responsibility for the suitability of these data for a particular purpose.

These agencies will NOT be liable for any damages incurred as a result of errors displayed here.

The ownership boundaries displayed on this map are NOT based on land survey data and are NOT a substitute for property surveys. This map displays public and private land ownership information derived from several sources and continues to be corrected and updated.

46116b	46117b	46118b	46119b	46120b	46121b	46122b	46123b	46124b	46125b	46126b	46127b	46128b	46129b	46130b	46131b	46132b	46133b	46134b	46135b	46136b	46137b	46138b	46139b	46140b
46116a	46117a	46118a	46119a	46120a	46121a	46122a	46123a	46124a	46125a	46126a	46127a	46128a	46129a	46130a	46131a	46132a	46133a	46134a	46135a	46136a	46137a	46138a	46139a	46140a
47116b	47117b	47118b	47119b	47120b	47121b	47122b	47123b	47124b	47125b	47126b	47127b	47128b	47129b	47130b	47131b	47132b	47133b	47134b	47135b	47136b	47137b	47138b	47139b	47140b
47116a	47117a	47118a	47119a	47120a	47121a	47122a	47123a	47124a	47125a	47126a	47127a	47128a	47129a	47130a	47131a	47132a	47133a	47134a	47135a	47136a	47137a	47138a	47139a	47140a
46115b	46116b	46117b	46118b	46119b	46120b	46121b	46122b	46123b	46124b	46125b	46126b	46127b	46128b	46129b	46130b	46131b	46132b	46133b	46134b	46135b	46136b	46137b	46138b	46139b
46115a	46116a	46117a	46118a	46119a	46120a	46121a	46122a	46123a	46124a	46125a	46126a	46127a	46128a	46129a	46130a	46131a	46132a	46133a	46134a	46135a	46136a	46137a	46138a	46139a
45114a	45115a	45116a	45117a	45118a	45119a	45120a	45121a	45122a	45123a	45124a	45125a	45126a	45127a	45128a	45129a	45130a	45131a	45132a	45133a	45134a	45135a	45136a	45137a	45138a
44113b	44114b	44115b	44116b	44117b	44118b	44119b	44120b	44121b	44122b	44123b	44124b	44125b	44126b	44127b	44128b	44129b	44130b	44131b	44132b	44133b	44134b	44135b	44136b	44137b
44113a	44114a	44115a	44116a	44117a	44118a	44119a	44120a	44121a	44122a	44123a	44124a	44125a	44126a	44127a	44128a	44129a	44130a	44131a	44132a	44133a	44134a	44135a	44136a	44137a

Montana Private Land Map Series Index

