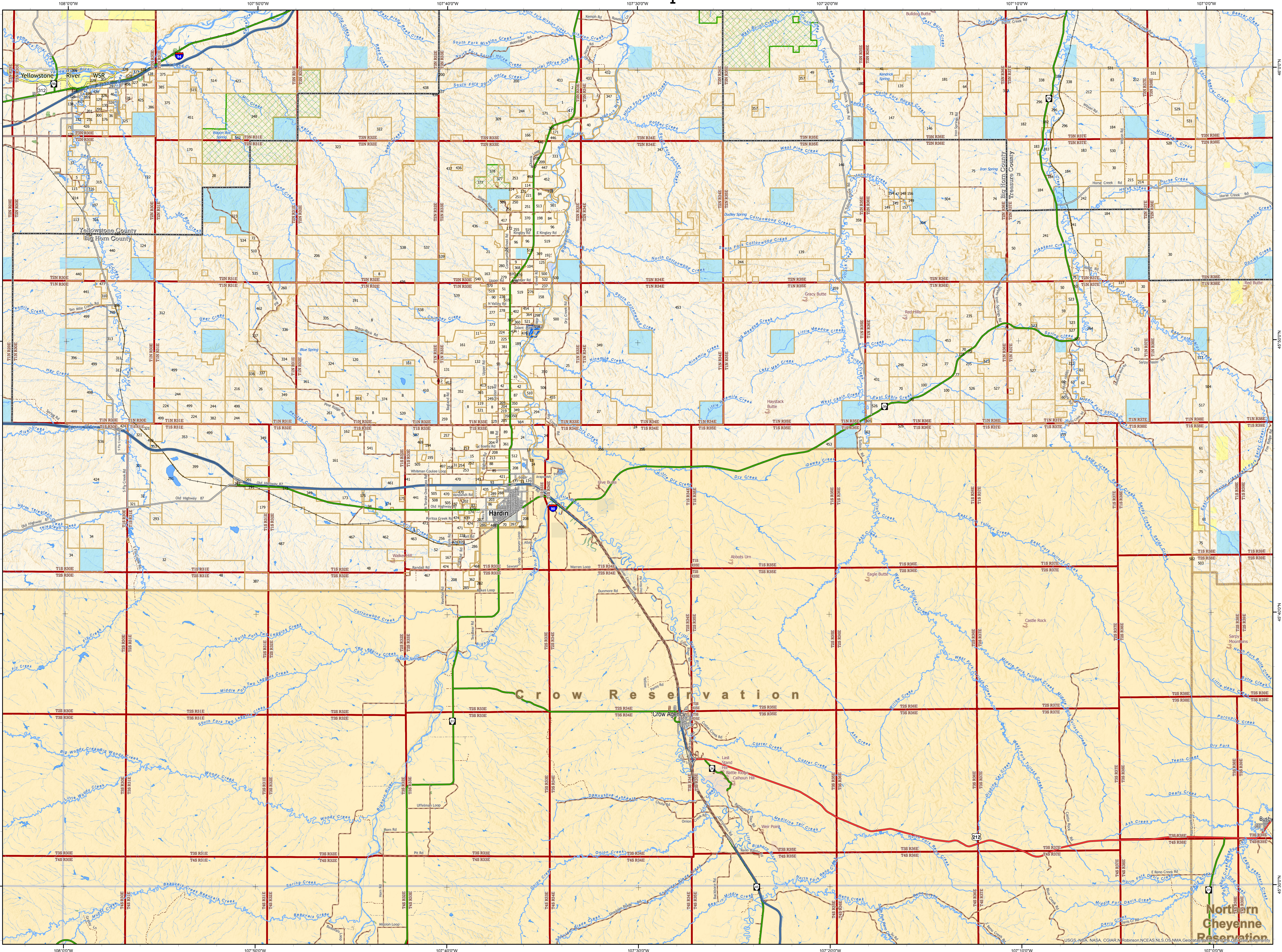


Hardin Quadrangle - 45107b Private Land Ownership Identification



- Management Area Types**
- Conservation Easement
 - Montana Fish Wildlife & Parks, State Park
 - Montana Fish Wildlife & Parks, Wildlife Management Area
 - Montana State Forest
 - USFWS Fish Tech. Center National Fish Hatchery
 - USFWS National Wildlife Refuge
 - USFWS Wildlife Management Area
 - USFWS Wilderness Area

- Public Land Ownership Types**
- US Bureau of Land Management
 - US Fish and Wildlife Service
 - US Forest Service
 - National Park Service
 - Other Federal Lands
 - MT Fish, Wildlife & Parks
 - State Trust Lands
 - Other State Lands
 - Local Government

- Other Features**
- Private Rural Land Parcel > 40 ac.
 - County Boundary
 - Glacier or Ice Mass
 - Lake or Pond
 - Marsh or Wetland
 - Perennial River or Creek
 - Seasonal Creek
 - Interstate Highway
 - Major Highway Primary
 - State Highway Secondary
 - Local Road or Street
 - Rural Road
 - Minor Road
 - Local Access Private Road
 - Railroad
 - Local High Point
 - Named Spring

SOURCES / ACKNOWLEDGEMENTS

This map was produced as a joint effort between Montana Fish, Wildlife & Parks (FWP) and the Geographic Information Program (Geoinfo) of the Montana State Library (MSL), in response to Montana Code Annotated 87-3-308, which directs the FWP to "... develop accurate land ownership maps... in the State".

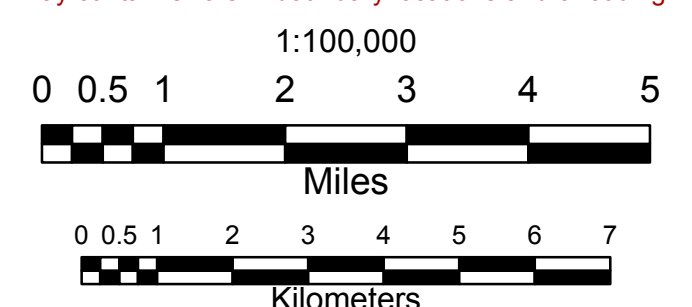
PLEASE READ - NOTES:

Parcel label numbers correspond to the Private Land List which may be downloaded from the Map Gallery Web site: http://apps.msl.mt.gov/Geographic_Information/Maps/Land_Ownership/Default.aspx

Not all legend items may appear on this map.

Features shown on this map do not imply public access to any lands.

The land status data displayed on this map may not be complete and may contain errors in boundary locations and/or coding.



About the DATA:

The private land data were developed for the Montana Cadastral Database Project. This data are provided through a cooperative effort between the Montana State Library - Geographic Information, the Montana Department of Revenue (DOR), other state agencies, local governments, USDI BLM and private enterprise. Lands depicted on THIS MAP represent single ownership of contiguous parcels that are at least 40 acres in size. The MSL-Geoinfo program maintains the GIS cadastral layer and the DOR maintains the private ownership information. The Montana Cadastral Database is comprised of taxable parcels (fee land) and public land (exempt property).

The public land data is from the Montana State Library public lands data collection. Much of this data was originally from a data cooperative effort between the Montana Department of Administration, (DOA) and the Montana Department of Revenue (DOR) other state agencies, local governments, USDI BLM and private enterprise. The data was grouped by very broad government categories for display on THIS MAP with general preference for types of land management that may be more friendly to hunting with appropriate permissions and regulations observed.

This map has not been verified against county or Montana Department of Revenue records. The base scale for the public ownership data is 1:100,000, though many of the recent edits incorporate data digitized from 1:24,000 scale maps or survey data. Private ownership data is accurate to scales of 1:24,000 or smaller.

Montana Spatial Data Infrastructure (MSDI) Data: Highways and Roads are Transportation Framework data. Rivers, Streams and Lakes are Montana National Hydrography Data data, enhanced by Montana FWP Data. Parcel data from Department of Revenue (DOR) Cadastral data. Names from Geographic Names Information System (GNIS).

DISCLAIMERS:

The MT State Library, MT Natural Heritage Program, MT Fish, Wildlife & Parks, MT Dept. of Administration and MT Dept. of Revenue make NO representation or warranties whatsoever with respect to the accuracy or completeness of the data contained in these maps and assumes NO responsibility for any damages incurred as a result of errors displayed here.

The ownership boundaries displayed on this map are NOT based on land survey data and are NOT a substitute for property surveys. This map displays public and private land ownership information derived from several sources and continues to be corrected and updated.

Document Name: 100kpx2016 Date Saved: 8/27/2016 3:52:11 PM

48116b	48115b	48114b	48113b	48112b	48111b	48110b	48109b	48108b	48107b	48106b	48105b	48104b
48116a	48115a	48114a	48113a	48112a	48111a	48110a	48109a	48108a	48107a	48106a	48105a	48104a
47116b	47115b	47114b	47113b	47112b	47111b	47110b	47109b	47108b	47107b	47106b	47105b	47104b
47116a	47115a	47114a	47113a	47112a	47111a	47110a	47109a	47108a	47107a	47106a	47105a	47104a
46115b	46114b	46113b	46112b	46111b	46110b	46109b	46108b	46107b	46106b	46105b	46104b	
46114a	46113a	46112a	46111a	46110a	46109a	46108a	46107a	46106a	46105a	46104a		
45114b	45113b	45112b	45111b	45110b	45109b	45108b	45107b	45106b	45105b	45104b		
45114a	45113a	45112a	45111a	45110a	45109a	45108a	45107a	45106a	45105a	45104a		
44113b	44112b	44111b										
44113a	44112a	44111a										

Montana Private Land Map Series Index