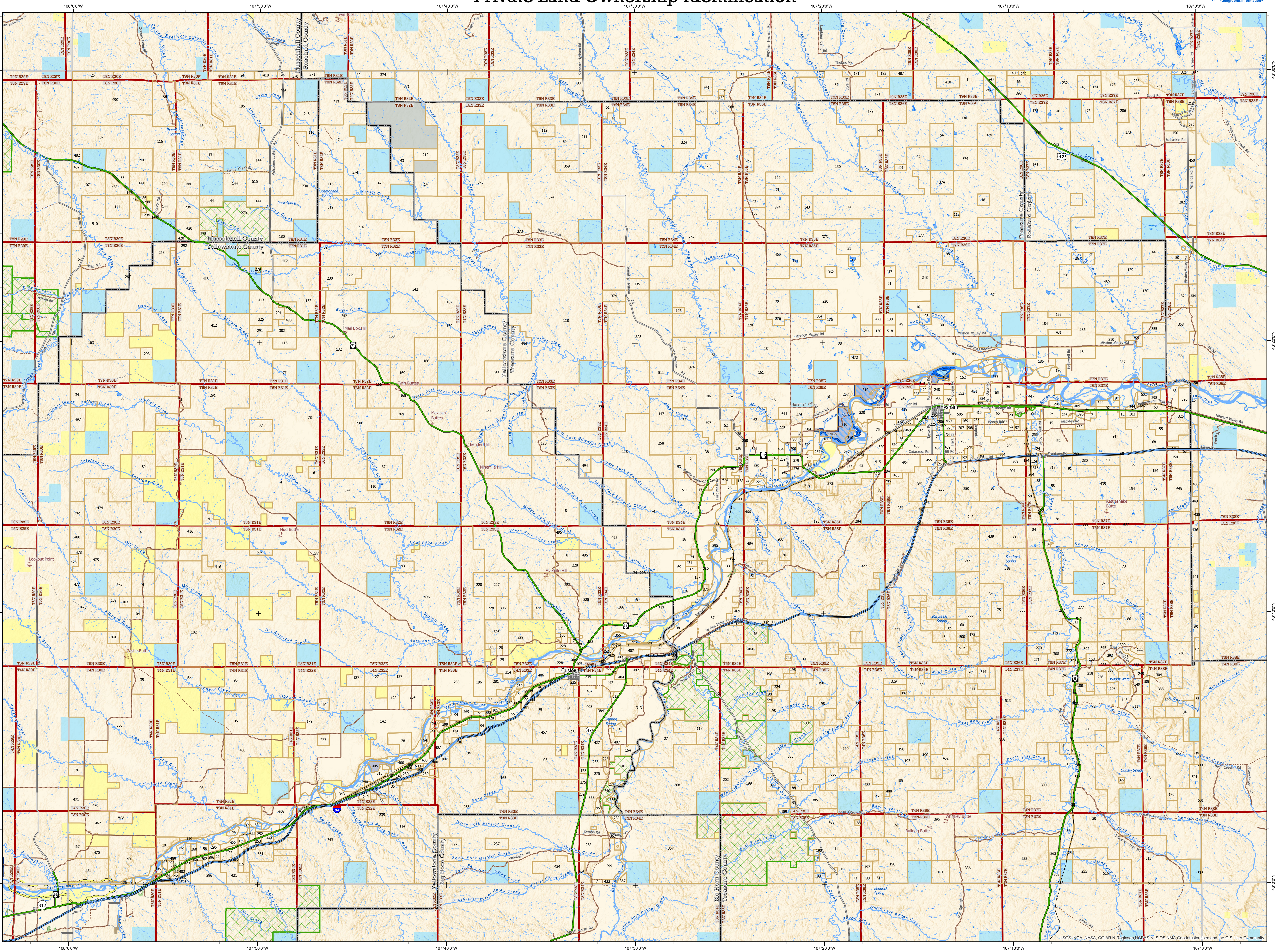


Hysham Quadrangle - 46107a

Private Land Ownership Identification



Management Area Types

- Conservation Easement
- Montana Fish Wildlife & Parks, State Park
- Montana Fish Wildlife & Parks, Wildlife Management Area
- Montana State Forest
- USFWS Fish Tech. Center National Fish Hatchery
- USFWS National Wildlife Refuge
- USFWS Wildlife Management Area
- USFWS Wilderness Area

Public Land Ownership Types

- BLM Outstanding Natural Area
- US Bureau of Land Management
- US Fish and Wildlife Service
- US Forest Service
- National Park Service
- Other Federal Lands
- MT Fish, Wildlife & Parks
- State Trust Lands
- Other State Lands
- Local Government

Private Land Ownership Types

- Private Rural Land Parcel > 40 ac.
- County Boundary
- Glacier or Ice Mass
- Lake or Pond
- Marsh or Wetland
- Perennial River or Creek
- Seasonal Creek
- Interstate Highway
- Major Highway Primary
- State Highway Secondary
- Local Road or Street
- Rural Road
- Minor Rural
- Local Access Private Road
- Railroad
- Local High Point
- Named Spring

SOURCES / ACKNOWLEDGEMENTS

This map was produced as a joint effort between Montana Fish, Wildlife & Parks (FWP) and the Geographic Information Program (GeInfo) of the Montana State Library (MSL), in response to Montana Code Annotated 87-3-308, which directs the FWP to "...work cooperatively with all state and federal land management agencies ... to develop accurate land ownership maps... in the State."

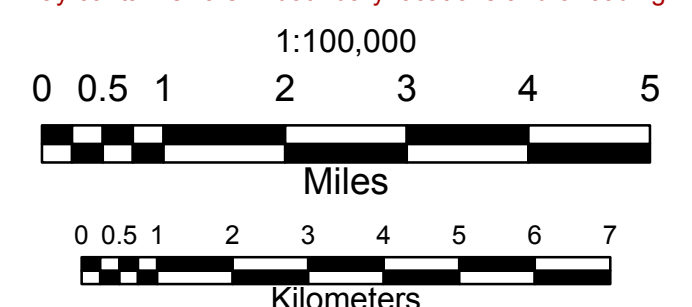
PLEASE READ - NOTES:

Parcel label numbers correspond to the Private Land List which may be downloaded from the Map Gallery Web site, http://apps.msl.mt.gov/Geographic_Information/Maps/Land_Ownership/Default.aspx

Not all legend items may appear on this map.

Features shown on this map do not imply public access to any lands.

The land status displayed on this map may not be complete and may contain errors in boundary locations and/or coding.



About the DATA:

The private land data were developed for the Montana Cadastral Database Project. This data are provided through a cooperative effort between the Montana State Library - Geographic Information, the Montana Department of Revenue (DOR), other state agencies, local governments, USDI BLM and private enterprise. Lands depicted on THIS MAP represent single ownership of contiguous parcels that are at least 40 acres in size. The MSL-Geoinfo program maintains the DOR cadastral layer and the DOR maintains the private ownership information. The Montana Cadastral Database is comprised of taxable parcels (fee land) and public land (exempt property).

The public land data is from the Montana State Library public lands data collection. Much of this data was originally from a data cooperative effort between the Montana Department of Administration (DOA) and the Montana Department of Revenue (DOR) other state agencies, local governments, USDI BLM and private enterprise. The data was grouped by very broad government categories for display on THIS MAP with general preference for types of land management that may be more friendly to hunting with appropriate permissions and regulations observed.

This map has not been verified against county or Montana Department of Revenue records.

The base scale for the public ownership data is 1:100,000, though many of the recent edits incorporate data digitized from 1:24,000 scale maps or survey data. Private ownership data is accurate to scales of 1:24,000 or smaller.

Montana Spatial Data Infrastructure (MSDI) Data: Highways and Roads are Transportation Framework data, Rivers, Streams and Lakes are Montana National Hydrography Data data, enhanced by Montana FWP Data, Parcel data from Department of Revenue (DOR) Cadastral data. Names from Geographic Names Information System (GNIS).

DISCLAIMERS:

The MT State Library, MT Natural Heritage Program, MT Fish, Wildlife & Parks, MT Dept. of Administration and MT Dept. of Revenue make NO representation or warranty with respect to the accuracy or completeness of the data contained in these maps and assumes NO responsibility for any damages incurred as a result of errors displayed here.

The ownership boundaries displayed on this map are NOT based on land survey data and are NOT a substitute for property surveys. This map displays public and private land ownership information derived from several sources and continues to be corrected and updated.

Document Name: 100kpx2016 Date Saved: 8/27/2016 3:52:11 PM

Montana Private Land Map Series Index

46106b	46106c	46106d	46106e	46106f	46106g	46106h	46106i	46106j	46106k	46106l	46106m	46106n	46106o	46106p	46106q	46106r	46106s	46106t	46106u	46106v	46106w	46106x	46106y	46106z	
46107a	46107b	46107c	46107d	46107e	46107f	46107g	46107h	46107i	46107j	46107k	46107l	46107m	46107n	46107o	46107p	46107q	46107r	46107s	46107t	46107u	46107v	46107w	46107x	46107y	46107z
46108a	46108b	46108c	46108d	46108e	46108f	46108g	46108h	46108i	46108j	46108k	46108l	46108m	46108n	46108o	46108p	46108q	46108r	46108s	46108t	46108u	46108v	46108w	46108x	46108y	46108z
46109a	46109b	46109c	46109d	46109e	46109f	46109g	46109h	46109i	46109j	46109k	46109l	46109m	46109n	46109o	46109p	46109q	46109r	46109s	46109t	46109u	46109v	46109w	46109x	46109y	46109z
46110a	46110b	46110c	46110d	46110e	46110f	46110g	46110h	46110i	46110j	46110k	46110l	46110m	46110n	46110o	46110p	46110q	46110r	46110s	46110t	46110u	46110v	46110w	46110x	46110y	46110z
46111a	46111b	46111c	46111d	46111e	46111f	46111g	46111h	46111i	46111j	46111k	46111l	46111m	46111n	46111o	46111p	46111q	46111r	46111s	46111t	46111u	46111v	46111w	46111x	46111y	46111z
46112a	46112b	46112c	46112d	46112e	46112f	46112g	46112h	46112i	46112j	46112k	46112l	46112m	46112n	46112o	46112p	46112q	46112r	46112s	46112t	46112u	46112v	46112w	46112x	46112y	46112z
46113a	46113b	46113c	46113d	46113e	46113f	46113g	46113h	46113i	46113j	46113k	46113l	46113m	46113n	46113o	46113p	46113q	46113r	46113s	46113t	46113u	46113v	46113w	46113x	46113y	46113z
46114a	46114b	46114c	46114d	46114e	46114f	46114g	46114h	46114i	46114j	46114k	46114l	46114m	46114n	46114o	46114p	46114q	46114r	46114s	46114t	46114u	46114v	46114w	46114x	46114y	46114z
46115a	46115b	46115c	46115d	46115e	46115f	46115g	46115h	46115i	46115j	46115k	46115l	46115m	46115n	46115o	46115p	46115q	46115r	46115s	46115t	46115u	46115v	46115w	46115x	46115y	46115z
46116a	46116b	46116c	46116d	46116e	46116f	46116g	46116h	46116i	46116j	46116k	46116l	46116m	46116n	46116o	46116p	46116q	46116r	46116s	46116t	46116u	46116v	46116w	46116x	46116y	46116z
46117a	46117b	46117c	46117d	46117e	46117f	46117g	46117h	46117i	46117j	46117k	46117l	46117m	46117n	46117o	46117p	46117q	46117r	46117s	46117t	46117u	46117v	46117w	46117x	46117y	46117z
46118a	46118b	46118c	46118d	46118e	46118f	46118g	46118h	46118i	46118j	46118k	46118l	46118m	46118n	46118o	46118p	46118q	46118r	46118s	46118t	46118u	46118v	46118w	46118x	46118y	46118z
46119a	46119b	46119c	46119d	46119e	46119f	46119g	46119h	46119i	46119j	46119k	46119l	46119m	46119n	46119o	46119p	46119q	46119r	46119s	46119t	46119u	46119v	46119w	46119x	46119y	46119z
46120a	46120b	46120c	46120d	46120e	46120f	46120g	46120h	46120i	46120j	46120k	46120l	46120m	46120n	46120o	46120p	46120q	46120r	46120s	46120t	46120u	46120v	46120w	46120x	46120y	46120z