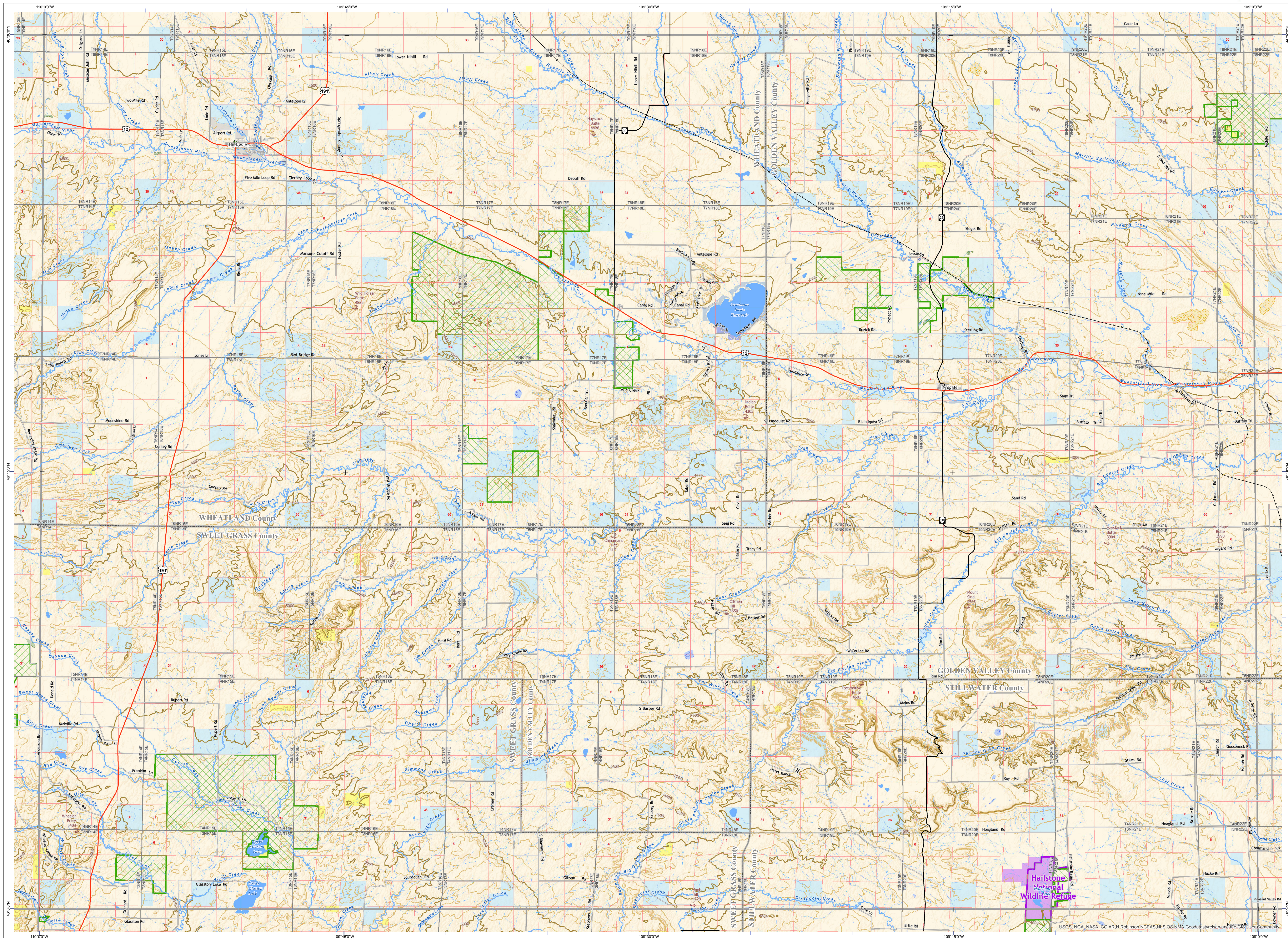


Harlowton Quadrangle - 46109a Montana Public Land & Management Map

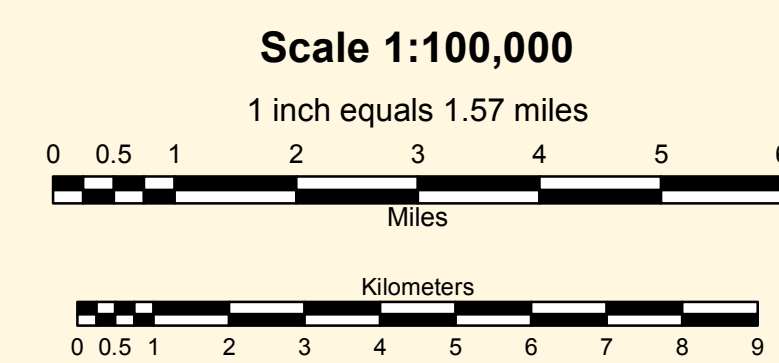


Public Ownership on this Map

US Bureau of Land Management	MT Dept of Transportation
US Fish and Wildlife Service	MT Dept Natural Resources
US Dept of Defense	Other State of Montana
MT State Trust Lands	Local Government

Management Areas on this Map

Conservation Easement
USFWS National Wildlife Refuge
USFS National Forest



Montana Public Ownership and Management Types, not necessarily present on this map

US Bureau of Land Management	MT Fish Wildlife & Parks	Conservation Easement	BLM Wild & Scenic River
US Fish and Wildlife Service	MT State Trust Lands	Montana Fish Wildlife & Parks, State Park	BLM Wilderness Area
US Forest Service	MT Dept of Corrections	Montana Fish Wildlife & Parks, Wildlife Management Area	BLM - Wilderness Study Area
US Dept of Agriculture	MT Dept of Transportation	Montana State Forest	USFS National Forest
National Park Service	MT Dept Natural Resources	State Forest	USFS Natural Area
US Army Corps of Engineers	Montana University System	USFWS Fish Tech Center	USFS Wild and Scenic River
US Bureau of Reclamation	Other State of Montana	USFWS National Fish Hatchery	USFS Wilderness
US Dept of Defense	Local Government	USFWS Wildlife Management Area	
		USFWS Wildlife Refuge	
		USFWS Wilderness	

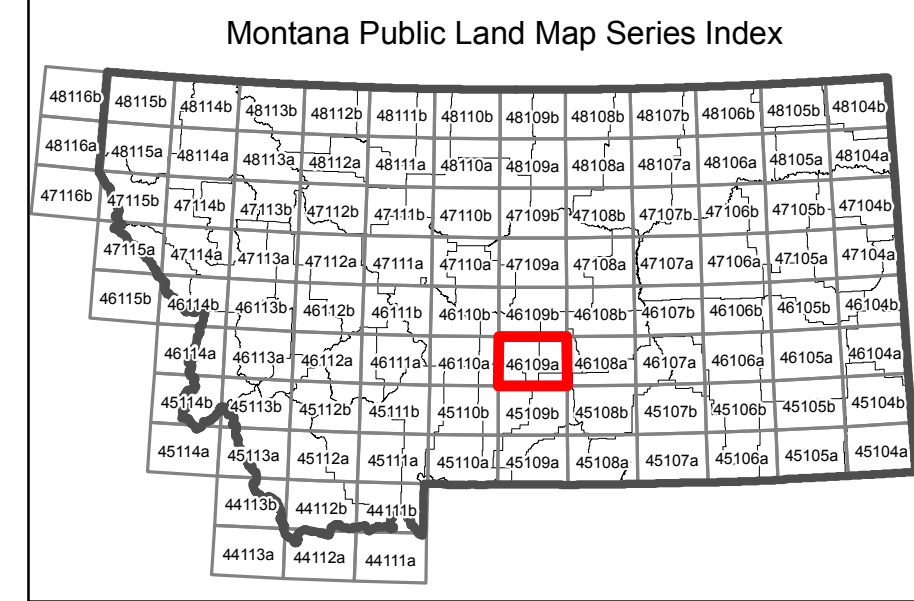
CAUTION:

- Not all legend items may appear on this map.
- Some Public Land data types were symbolized together by broad government categories for display on this map.
- Land management features shown on this map are not intended as a legal depiction of public or private ownership and boundaries and should not be used in place of a survey conducted by a licensed land surveyor.
- Public ownership of land does not imply public access. Not all public parcels or roads shown on this map are open to the public. Inquire locally to learn if you can enter certain land parcels or drive on certain roads. **Ask first!**
- Map features shown, including conservation easements AND ROADS, do not imply public access to any lands.

MAP DISCLAIMER:

The Montana State Library Geographic Information Services provides this product/service for informational purposes only. The Library did not produce it for, nor is it suitable for legal, engineering, or surveying purposes. Consumers of this information should review or consult the primary data and information sources to ascertain the viability of the information for their purposes. The Library provides these data in good faith but does not represent or warrant its accuracy, adequacy, or completeness. In no event shall the Library be liable for any incorrect results or analysis, any direct, indirect, special, or consequential damages to any party, or any lost profits arising out of or in connection with the use or the inability to use the data or the services provided. The Library makes these data and services available as a convenience to the public, and for no other purpose. The Library reserves the right to change or revise published data and/or services at any time.

For questions about the data displayed here or to report errors, please contact the Montana State Library at: 406-444-5354 or geoinfo@mt.gov.



Notice: This map is not intended as a legal depiction of public or private land boundaries.