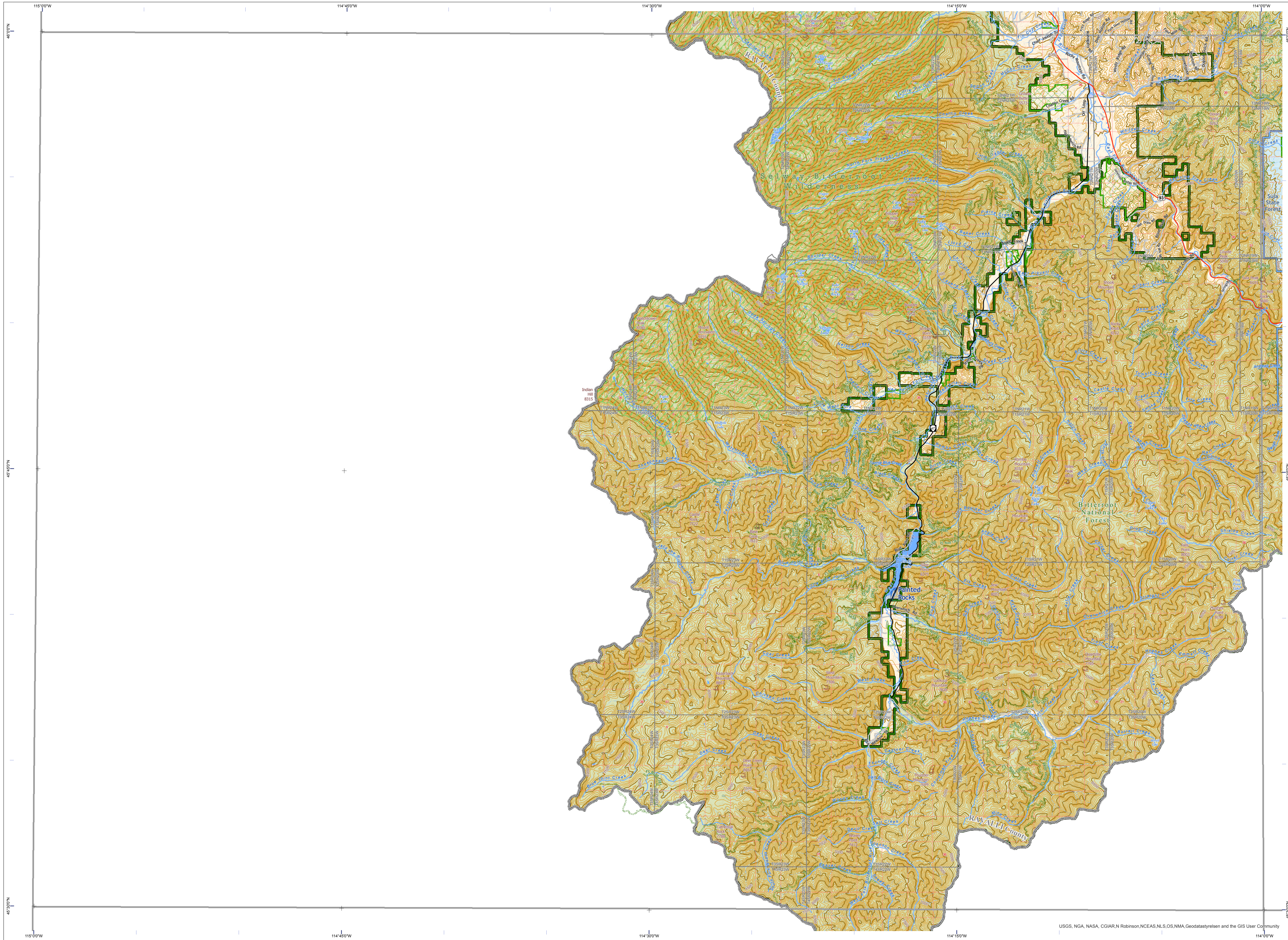


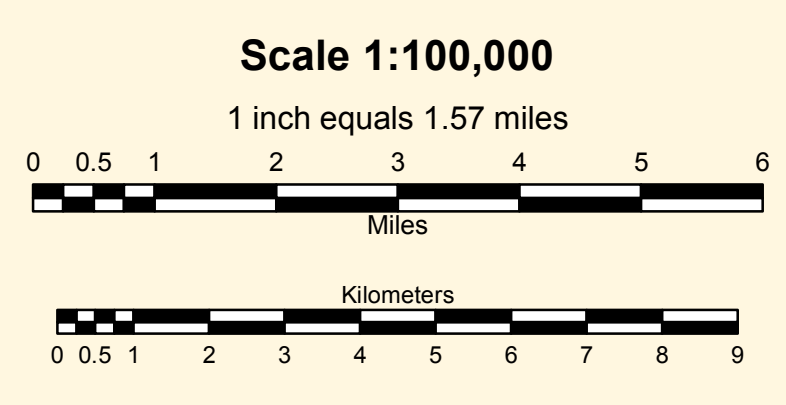
# Nez Perce Pass Quadrangle - 45114b Montana Public Land & Management Map



USGS, NGA, NASA, CGIAR, N Robinson, NCEAS, NLS, OS, NMA, Geodatasystemen and the GIS User Community

Public Ownership on this Map	
US Forest Service	MT Dept of Transportation
MT Fish Wildlife & Parks	Other State of Montana
MT State Trust Lands	Local Government

Management Areas on this Map	
Conservation Easement	USFS National Forest
Montana Fish Wildlife & Parks, State Park	USFS National Area
Montana State Forest	USFS Wilderness



**Notice: This map is not intended as a legal depiction of public or private land boundaries.**

Montana Public Ownership and Management Types, not necessarily present on this map			
US Bureau of Land Management	MT Fish Wildlife & Parks	Conservation Easement	BLM Wild & Scenic River
US Fish and Wildlife Service	MT State Trust Lands	Montana Fish Wildlife & Parks, State Park	BLM Wilderness Area
US Forest Service	MT Dept of Corrections	Montana Fish Wildlife & Parks, Wildlife Management Area	BLM - Wilderness Study Area
US Dept of Agriculture	MT Dept of Transportation	Montana State Forest	USFS National Forest
National Park Service	MT Dept Natural Resources	USFS State Forest	USFS National Area
US Army Corps of Engineers	Montana University System	USFWS Fish Tech. Center	USFS Wild and Scenic River
US Bureau of Reclamation	Other State of Montana	National Fish Hatchery	USFS Wilderness
US Dept of Defense	Local Government	USFWS Wildlife Management Area	USFS Wilderness
		USFWS	

**CAUTION:**

- Not all legend items may appear on this map.
- Some Public Land data types were symbolized together by broad government categories for display on this map.
- Land management features shown on this map are not intended as a legal depiction of public or private surface and ownership boundaries and should not be used in place of a survey conducted by a licensed land surveyor.
- Public ownership of land does not imply public access. Not all public parcels or roads shown on this map are open to the public. Inquire locally to learn if you can enter certain land parcels or drive on certain road. **Ask first!**
- Map features shown, including conservation easements AND ROADS, do not imply public access to any lands.

**MAP DISCLAIMER:**  
The Montana State Library Geographic Information Services provides this product/service for informational purposes only. The Library did not produce it for, nor is it suitable for legal, engineering, or surveying purposes. Consumers of this information should review or consult the primary data and information sources to ascertain the viability of the information for their purposes. The Library provides these data in good faith but does not represent or warrant its accuracy, adequacy, or completeness. In no event shall the Library be liable for any incorrect results or analysis, any direct, indirect, special, or consequential damages to any party, or any lost profits arising out of or in connection with the use or the inability to use the data or the services provided. The Library makes these data and services available as a convenience to the public, and for no other purpose. The Library reserves the right to change or revise published data and/or services at any time.

Montana Public Land Map Series Index															
45110	45111	45112	45113	45114	45115	45116	45117	45118	45119	45120	45121	45122	45123	45124	45125
45126	45127	45128	45129	45130	45131	45132	45133	45134	45135	45136	45137	45138	45139	45140	45141
45142	45143	45144	45145	45146	45147	45148	45149	45150	45151	45152	45153	45154	45155	45156	45157
45158	45159	45160	45161	45162	45163	45164	45165	45166	45167	45168	45169	45170	45171	45172	45173
45174	45175	45176	45177	45178	45179	45180	45181	45182	45183	45184	45185	45186	45187	45188	45189
45190	45191	45192	45193	45194	45195	45196	45197	45198	45199	45200	45201	45202	45203	45204	45205

For questions about the data displayed here or to report errors, please contact the Montana State Library at: 406-444-5354 or [geoinfo@mt.gov](mailto:geoinfo@mt.gov).

**SOURCE INFORMATION:**  
Public Land data: Montana State Library  
Land Management data: Montana State Library, U.S. Forest Service, U.S. Fish and Wildlife Service, Bureau of Land Management, Montana Fish, Wildlife & Parks  
Base map data: Montana Spatial Data Infrastructure (MSDI), including Transportation, Elevation, Hydrography, Public Land Survey System, Administrative Boundaries, Geographic Names, and Cadastral datasets