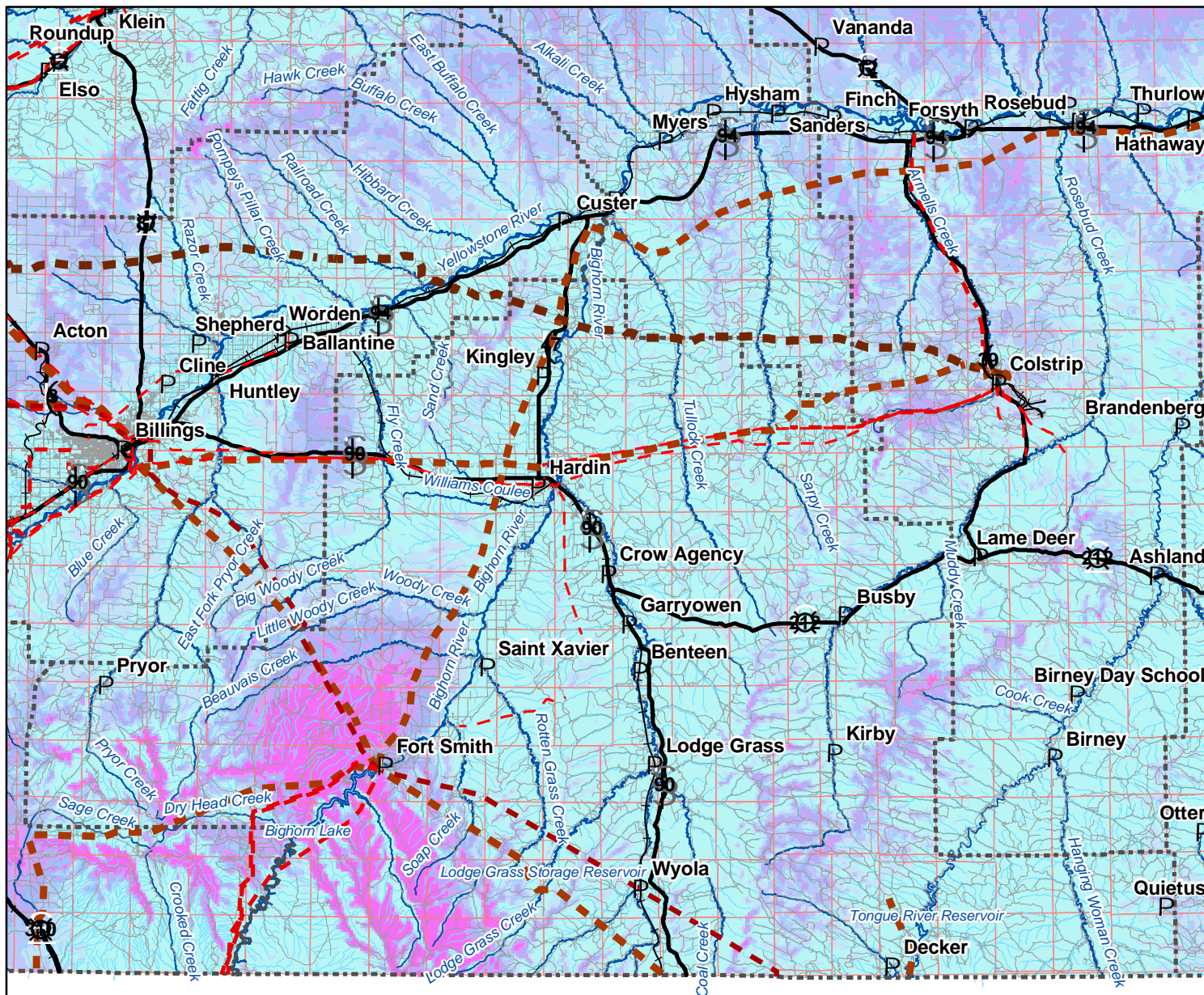
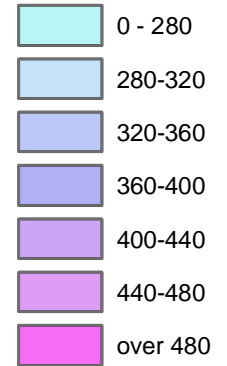


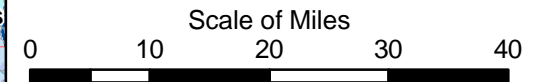
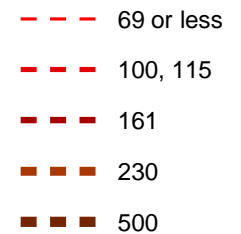
# Wind Power Big Horn County, Montana



## Average Annual Wind Power, Watts/Sq Meter



## Electric Transmission Lines, Kilovolts



Wind power is estimated for an elevation 50 meters above the ground. The estimates were produced by TrueWind Solutions using their Mesomap system and historical weather data. This data has been validated with available surface data by the National Renewable Energy Laboratory and wind energy meteorological consultants.



Look for this map in Montana Maps at <http://nris.state.mt.us>