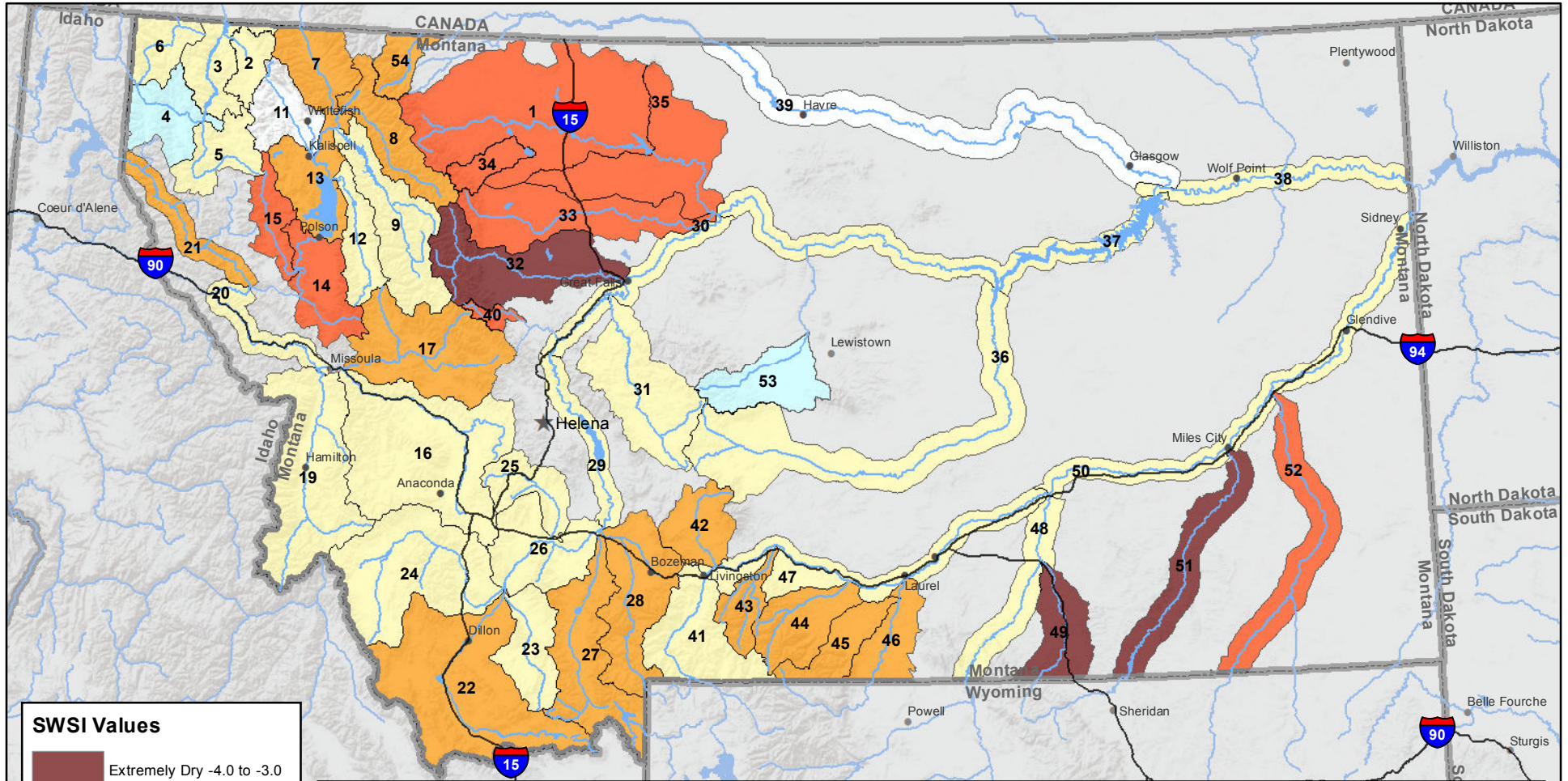
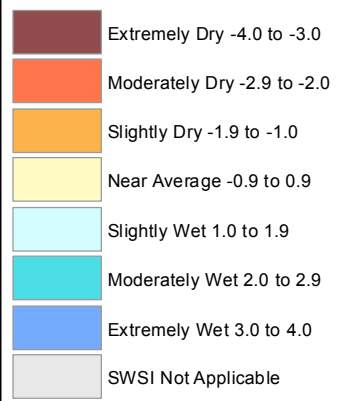


# Montana Data Collection Office Surface Water Supply Index (SWSI) March 1, 2016



### SWSI Values



### RIVER INDEX & SWSI VALUES

1 Marias above Tiber Reservoir -2.6	16 Clark Fork above Milltown -0.1	30 Missouri below Canyon Ferry -0.4	45 Rock/Red Lodge Creeks -1.3
2 Tobacco -0.6	17 Blackfoot -1.5	31 Smith 0.2	46 Clarks Fork Yellowstone -1.2
3 Kootenai Ft. Steele to Libby Dam -0.3	18 Clark Fork above Missoula -1	32 Sun -3.6	47 Yellowstone above Bighorn River -0.8
4 Kootenai below Libby Dam 1.8	19 Bitterroot -0.9	33 Teton -2.2	48 Bighorn below Bighorn Lake -0.8
5 Fisher -0.8	20 Clark Fork River below Bitterroot -0.7	34 Birch/Dupuyer Creeks -2.8	49 Little Bighorn -3.3
6 Yaak 0.4	21 Clark Fork River below Flathead -1	35 Marias -2.6	50 Yellowstone below Bighorn -0.8
7 North Fk. Flathead -1.2	22 Beaverhead -1.2	36 Musselshell -0.1	51 Tongue -3.1
8 Middle Fk. Flathead -1.5	23 Ruby -0.4	37 Missouri above Fort Peck -0.7	52 Powder -2.8
9 South Fk. Flathead -0.1	24 Big Hole 0.6	38 Missouri below Fort Peck 0.1	53 Upper Judith 1
10 Flathead at Columbia Falls -0.6	25 Boulder (Jefferson) 0.3	40 Dearborn near Craig -2.1	54 Saint Mary -1.2
12 Swan 0.1	26 Jefferson 0.1	41 Yellowstone above Livingston -0.6	
13 Flathead at Polson -1.2	27 Madison -1.3	42 Shields -1	
14 Mission Valley -2.5	28 Gallatin -1	43 Boulder (Yellowstone) -1.9	
15 Little Bitterroot -2	29 Missouri above Canyon Ferry -0.8	44 Stillwater -1.9	

Note: Data used to generate this map are PROVISIONAL and SUBJECT TO CHANGE

