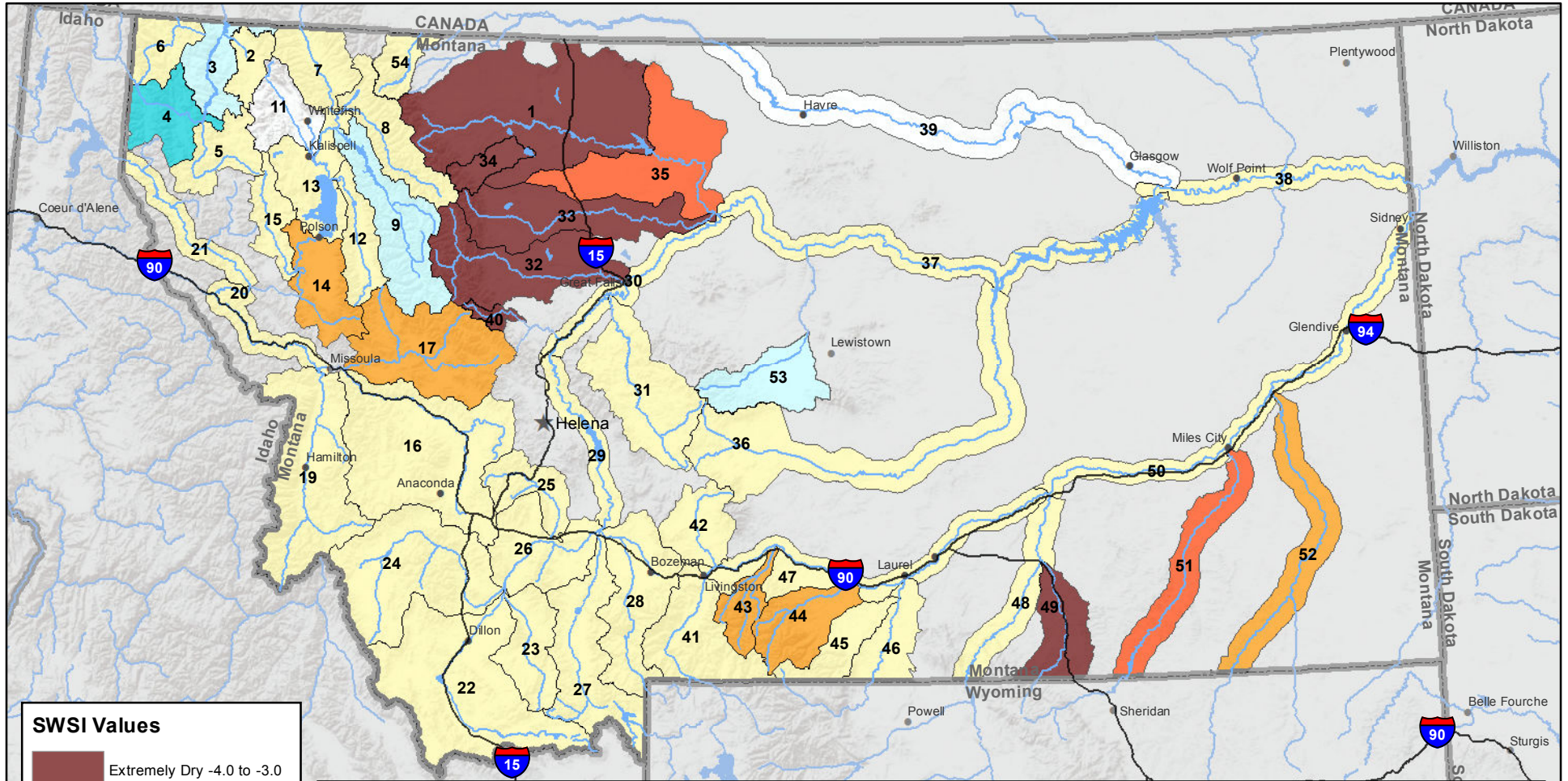
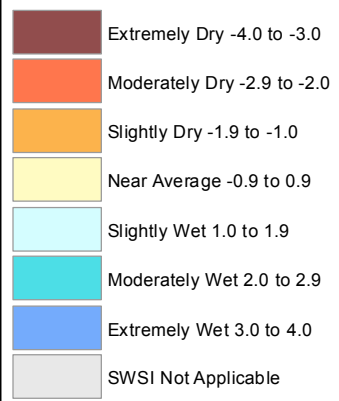


Montana Data Collection Office Surface Water Supply Index (SWSI) April 1, 2016



SWSI Values



RIVER INDEX & SWSI VALUES

1 Marias above Tiber Reservoir -3.3	16 Clark Fork above Milltown 0.6	30 Missouri below Canyon Ferry -0.1	45 Rock/Red Lodge Creeks -0.6
2 Tobacco 0.8	17 Blackfoot -1.3	31 Smith 0.2	46 Clarks Fork Yellowstone -0.6
3 Kootenai Ft. Steele to Libby Dam 1.2	18 Clark Fork above Missoula -0.8	32 Sun -3.8	47 Yellowstone above Bighorn River -0.4
4 Kootenai below Libby Dam 2.5	19 Bitterroot -0.1	33 Teton -3.8	48 Bighorn below Bighorn Lake 0.1
5 Fisher -0.6	20 Clark Fork River below Bitterroot -0.6	34 Birch/Dupuyer Creeks -3.1	49 Little Bighorn -3.3
6 Yaak 0.6	21 Clark Fork River below Flathead -0.3	35 Marias -2.8	50 Yellowstone below Bighorn -0.2
7 North Fk. Flathead 0.3	22 Beaverhead -0.8	36 Musselshell 0.4	51 Tongue -2
8 Middle Fk. Flathead -0.6	23 Ruby 0.1	37 Missouri above Fort Peck -0.7	52 Powder -1.2
9 South Fk. Flathead 1	24 Big Hole 0.6	38 Missouri below Fort Peck 0.3	53 Upper Judith 1.7
10 Flathead at Columbia Falls 0.8	25 Boulder (Jefferson) 0.4	40 Dearborn near Craig -3.1	54 Saint Mary -0.4
11 Swan 0.3	26 Jefferson 0.5	41 Yellowstone above Livingston -0.1	
12 Flathead at Polson -0.1	27 Madison 0.3	42 Shields 0.1	
13 Mission Valley -1.8	28 Gallatin -0.6	43 Boulder (Yellowstone) -1.7	
14 Little Bitterroot -0.9	29 Missouri above Canyon Ferry -0.1	44 Stillwater -1.2	

Note: Data used to generate this map are PROVISIONAL and SUBJECT TO CHANGE

