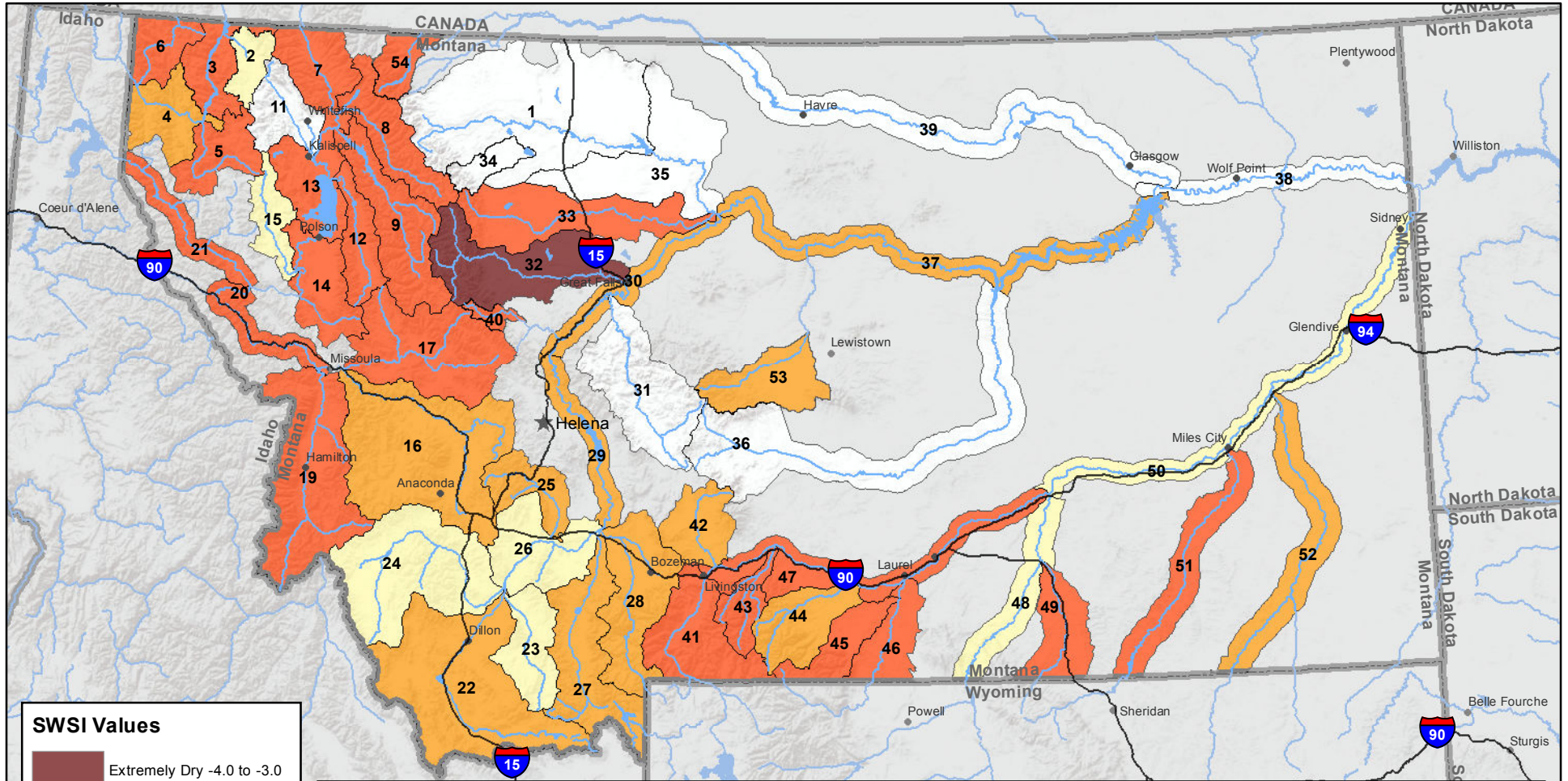
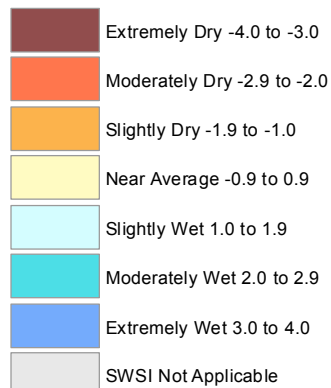


# Montana Data Collection Office Surface Water Supply Index (SWSI) July 1, 2016



### SWSI Values



### RIVER INDEX & SWSI VALUES

|                                       |   |                                      |                                       |
|---------------------------------------|---|--------------------------------------|---------------------------------------|
| 1 Marias above Tiber Reservoir        | 16 Clark Fork above Milltown -1.3         | 30 Missouri below Canyon Ferry -1.2  | 45 Rock/Red Lodge Creeks -2.2         |
| 2 Tobacco -0.3                        | 17 Blackfoot -2.8                         | 31 Smith                             | 46 Clarks Fork Yellowstone -2.4       |
| 3 Kootenai Ft. Steele to Libby Dam -2 | 18 Clark Fork above Missoula -2           | 32 Sun -3.6                          | 47 Yellowstone above Bighorn River -2 |
| 4 Kootenai below Libby Dam -1.4       | 19 Bitterroot -2.6                        | 33 Teton -2                          | 48 Bighorn below Bighorn Lake 0.4     |
| 5 Fisher -2.4                         | 20 Clark Fork River below Bitterroot -2.2 | 34 Birch/Dupuyer Creeks              | 49 Little Bighorn -2.9                |
| 6 Yaak -2.9                           | 21 Clark Fork River below Flathead -2.3   | 35 Marias                            | 50 Yellowstone below Bighorn -0.9     |
| 7 North Fk. Flathead -2.4             | 22 Beaverhead -1.3                        | 36 Musselshell                       | 51 Tongue -2.4                        |
| 8 Middle Fk. Flathead -2.6            | 23 Ruby -0.8                              | 37 Missouri above Fort Peck -1.2     | 52 Powder -1.7                        |
| 9 South Fk. Flathead -2               | 24 Big Hole -0.8                          | 38 Missouri below Fort Peck          | 53 Upper Judith -1.7                  |
| 10 Flathead at Columbia Falls -2.4    | 25 Boulder (Jefferson) -1.2               | 40 Dearborn near Craig -2.8          | 54 Saint Mary -2                      |
| 12 Swan -2                            | 26 Jefferson -0.8                         | 41 Yellowstone above Livingston -2.6 |                                       |
| 13 Flathead at Polson -2.4            | 27 Madison -1.3                           | 42 Shields -1.8                      |                                       |
| 14 Mission Valley -2.5                | 28 Gallatin -1.2                          | 43 Boulder (Yellowstone) -2          |                                       |
| 15 Little Bitterroot -0.6             | 29 Missouri above Canyon Ferry -1         | 44 Stillwater -1.7                   |                                       |

Note: Data used to generate this map are PROVISIONAL and SUBJECT TO CHANGE