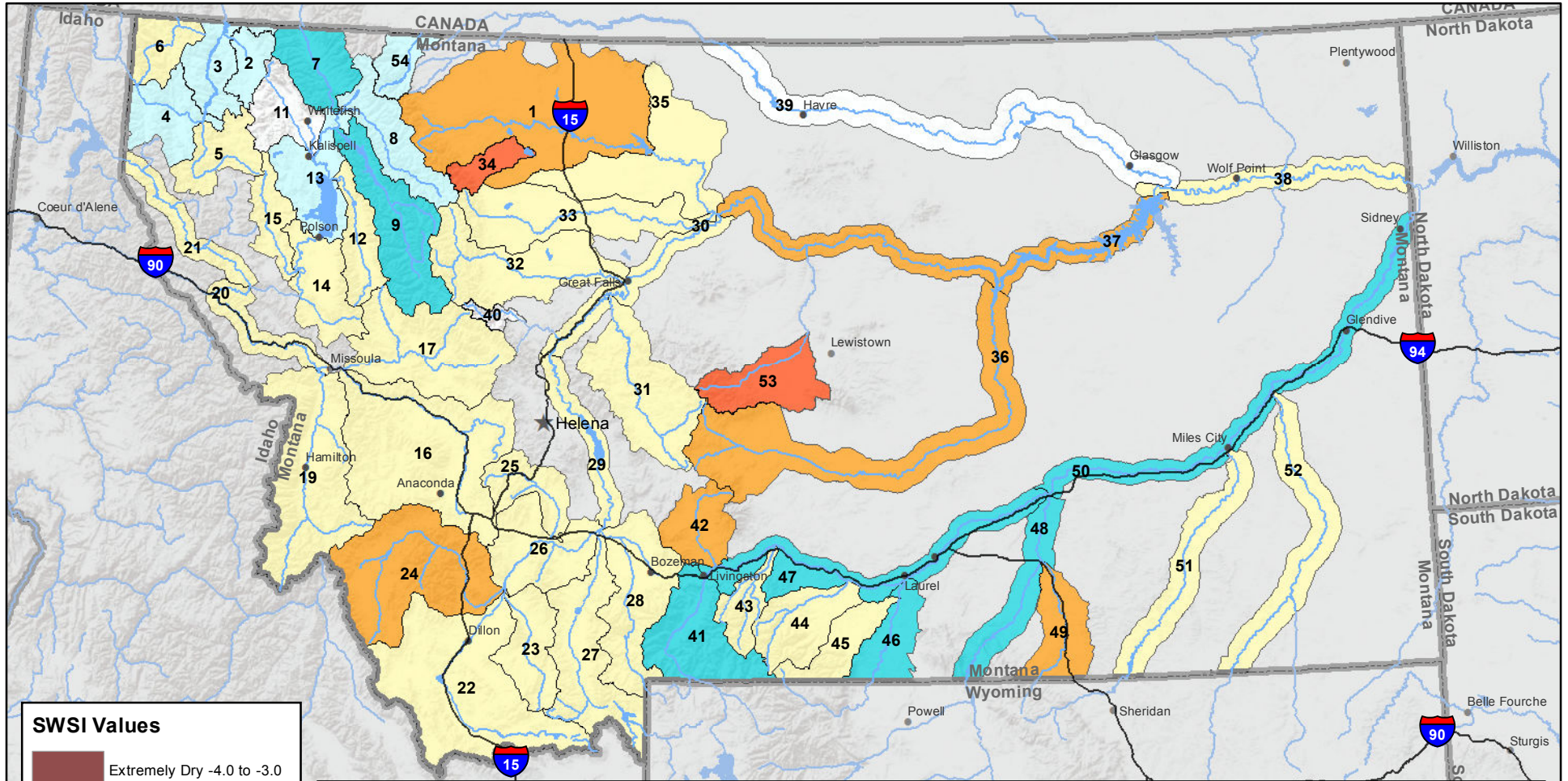
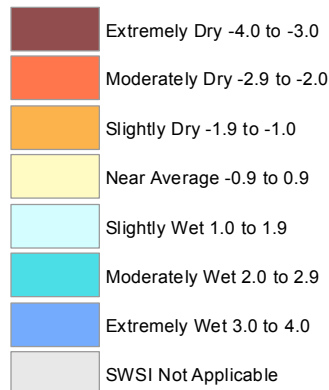


Montana Data Collection Office Surface Water Supply Index (SWSI) January 1, 2017



SWSI Values



RIVER INDEX & SWSI VALUES

1 Marias above Tiber Reservoir -1.2	16 Clark Fork above Milltown -0.5	30 Missouri below Canyon Ferry -0.7	45 Rock/Red Lodge Creeks -0.7
2 Tobacco 1.4	17 Blackfoot 0	31 Smith -0.8	46 Clarks Fork Yellowstone 2.1
3 Kootenai Ft. Steele to Libby Dam 1.7	18 Clark Fork above Missoula 0	32 Sun -0.4	47 Yellowstone above Bighorn River 2
4 Kootenai below Libby Dam 1.8	19 Bitterroot 0.4	33 Teton 0.8	48 Bighorn below Bighorn Lake 2.1
5 Fisher -0.5	20 Clark Fork River below Bitterroot 0.1	34 Birch/Dupuyer Creeks -2.4	49 Little Bighorn -1
6 Yaak 0.7	21 Clark Fork River below Flathead 0.7	35 Marias -0.5	50 Yellowstone below Bighorn 2
7 North Fk. Flathead 2.1	22 Beaverhead -0.9	36 Musselshell -1.7	51 Tongue 0.2
8 Middle Fk. Flathead 1	23 Ruby -0.4	37 Missouri above Fort Peck -1.1	52 Powder -0.4
9 South Fk. Flathead 2.4	24 Big Hole -1	38 Missouri below Fort Peck 0	53 Upper Judith -2
10 Flathead at Columbia Falls 1.6	25 Boulder (Jefferson) -0.4	40 Dearborn near Craig	54 Saint Mary 1.4
12 Swan 0	26 Jefferson -0.2	41 Yellowstone above Livingston 2.8	
13 Flathead at Polson 1	27 Madison 0.7	42 Shields -1	
14 Mission Valley 0.2	28 Gallatin -0.7	43 Boulder (Yellowstone) -0.4	
15 Little Bitterroot 0.4	29 Missouri above Canyon Ferry -0.7	44 Stillwater 0.4	

Note: Data used to generate this map are PROVISIONAL and SUBJECT TO CHANGE