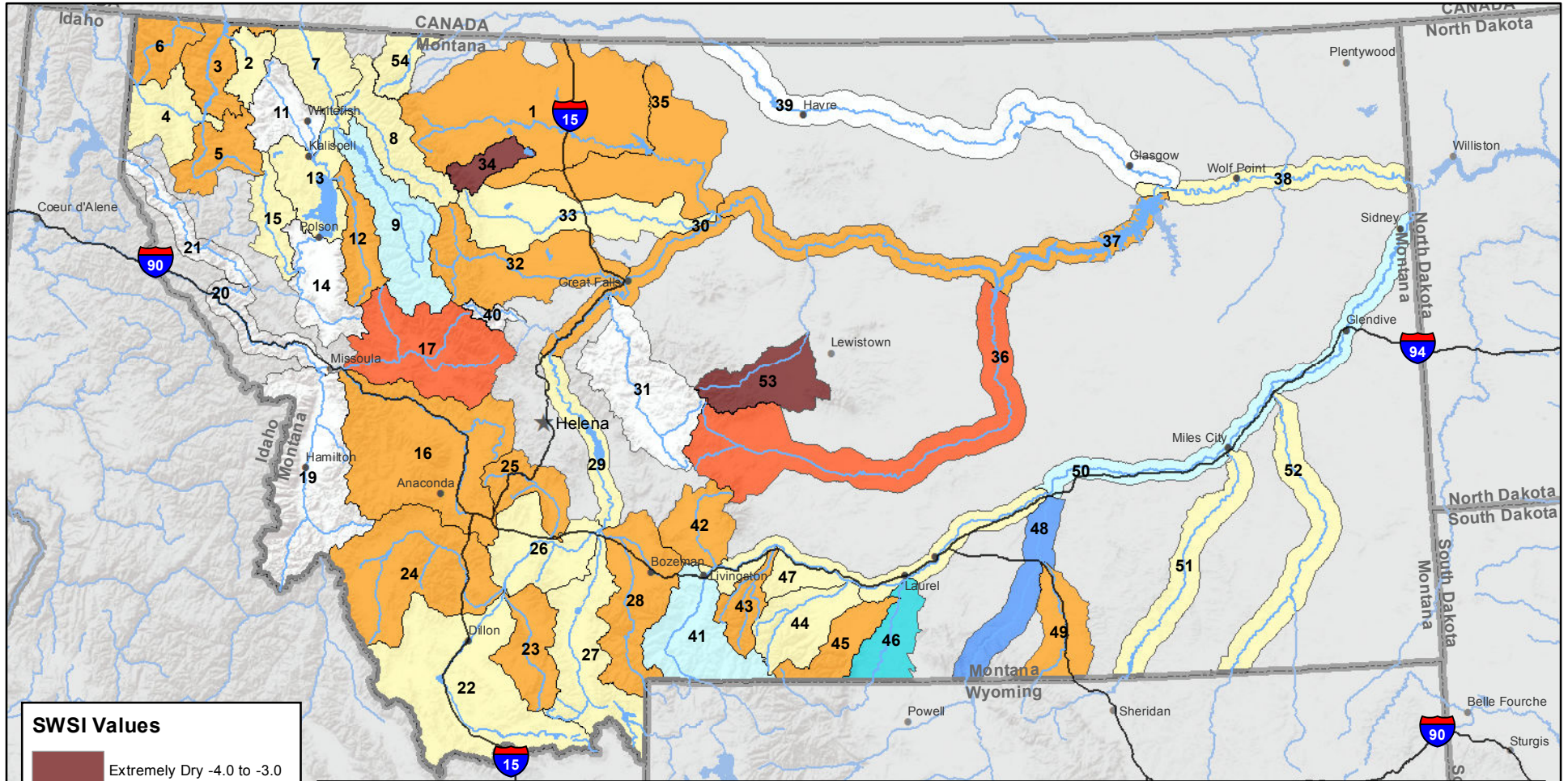
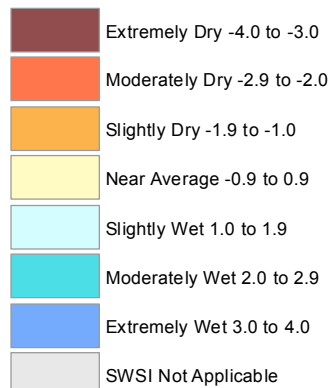


Montana Data Collection Office Surface Water Supply Index (SWSI) February 1, 2017



SWSI Values



RIVER INDEX & SWSI VALUES

1 Marias above Tiber Reservoir -1.6	16 Clark Fork above Milltown -1.6	30 Missouri below Canyon Ferry -1	45 Rock/Red Lodge Creeks -1.2
2 Tobacco -0.7	17 Blackfoot -2.1	31 Smith	46 Clarks Fork Yellowstone 2.1
3 Kootenai Ft. Steele to Libby Dam -1	18 Clark Fork above Missoula -1.9	32 Sun -1.7	47 Yellowstone above Bighorn River 0.7
4 Kootenai below Libby Dam 0	19 Bitterroot	33 Teton 0.2	48 Bighorn below Bighorn Lake 3.3
5 Fisher -1.4	20 Clark Fork River below Bitterroot	34 Birch/Dupuyer Creeks -3	49 Little Bighorn -1
6 Yaak -1.2	21 Clark Fork River below Flathead	35 Marias -1.7	50 Yellowstone below Bighorn 1.9
7 North Fk. Flathead -0.4	22 Beaverhead -0.9	36 Musselshell -2.8	51 Tongue -0.2
8 Middle Fk. Flathead -0.7	23 Ruby -1.9	37 Missouri above Fort Peck -1.4	52 Powder 0
9 South Fk. Flathead 1.4	24 Big Hole -1	38 Missouri below Fort Peck -0.2	53 Upper Judith -3.8
10 Flathead at Columbia Falls 0.5	25 Boulder (Jefferson) -1.2	40 Dearborn near Craig	54 Saint Mary -0.2
12 Swan -1.6	26 Jefferson -0.4	41 Yellowstone above Livingston 1	
13 Flathead at Polson -0.9	27 Madison 0	42 Shields -1.9	
14 Mission Valley	28 Gallatin -1.6	43 Boulder (Yellowstone) -1.7	
15 Little Bitterroot -0.7	29 Missouri above Canyon Ferry -0.9	44 Stillwater -0.9	

Note: Data used to generate this map are PROVISIONAL and SUBJECT TO CHANGE