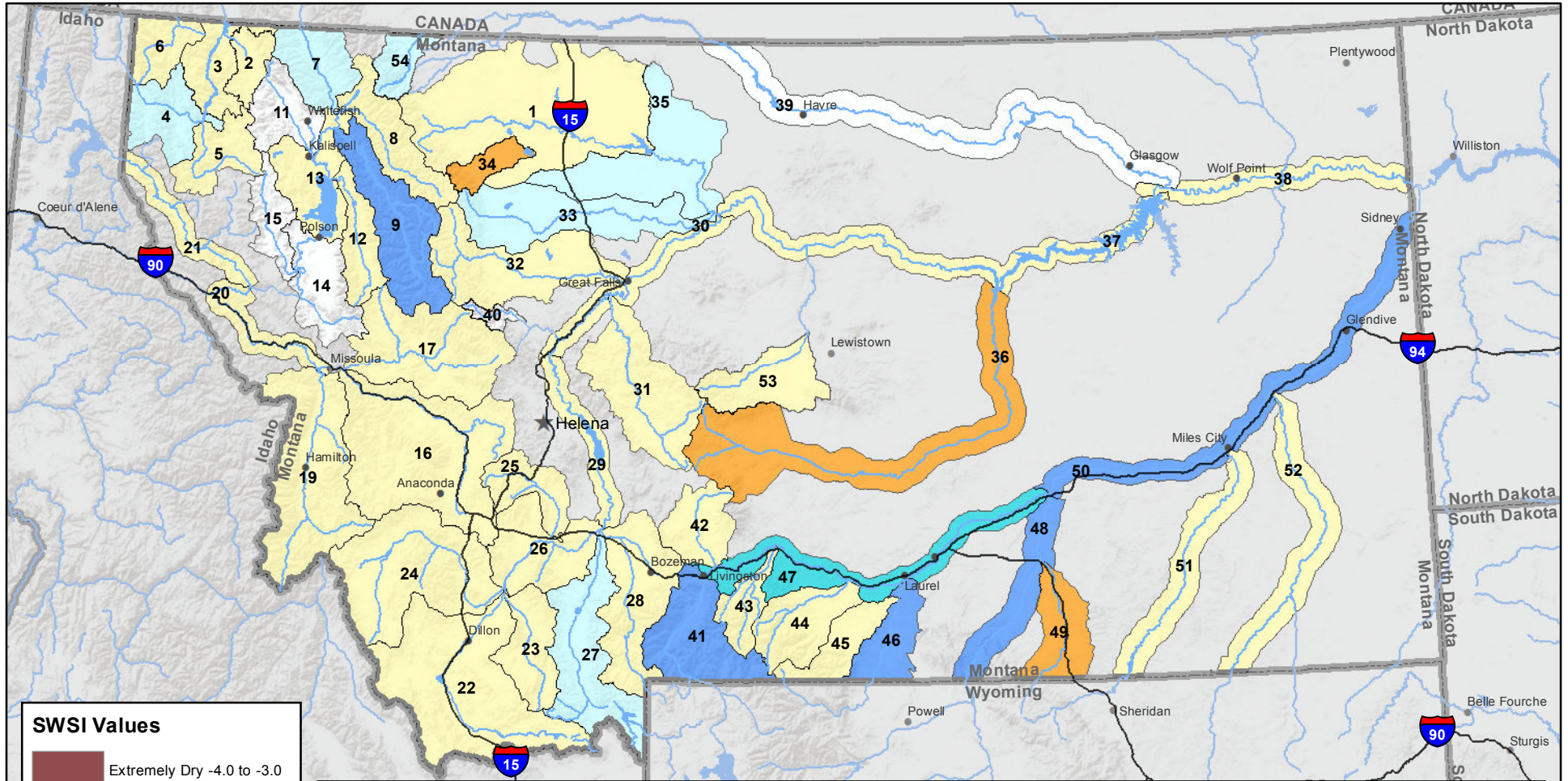
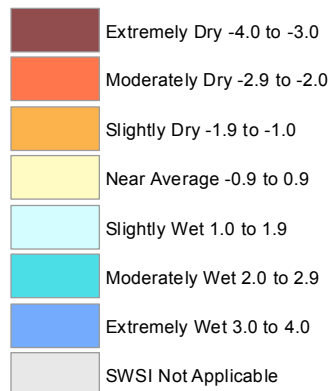


Montana Data Collection Office Surface Water Supply Index (SWSI) March 1, 2017



SWSI Values



RIVER INDEX & SWSI VALUES

1 Marias above Tiber Reservoir 0.4	16 Clark Fork above Milltown 0.7	30 Missouri below Canyon Ferry 0	45 Rock/Red Lodge Creeks -0.4
2 Tobacco 0.9	17 Blackfoot 0	31 Smith 0	46 Clarks Fork Yellowstone 3.3
3 Kootenai Ft. Steele to Libby Dam 0.9	18 Clark Fork above Missoula 0	32 Sun 0.4	47 Yellowstone above Bighorn River 2.4
4 Kootenai below Libby Dam 1.8	19 Bitterroot 0.4	33 Teton 1	48 Bighorn below Bighorn Lake 3.8
5 Fisher 0	20 Clark Fork River below Bitterroot 0.1	34 Birch/Dupuyer Creeks -1.9	49 Little Bighorn -1
6 Yaak 0.5	21 Clark Fork River below Flathead 0.6	35 Marias 1.7	50 Yellowstone below Bighorn 3
7 North Fk. Flathead 1	22 Beaverhead 0.2	36 Musselshell -1.6	51 Tongue 0.4
8 Middle Fk. Flathead 0.5	23 Ruby -0.7	37 Missouri above Fort Peck 0.4	52 Powder 0.2
9 South Fk. Flathead 3.1	24 Big Hole 0.2	38 Missouri below Fort Peck 0.9	53 Upper Judith -0.4
10 Flathead at Columbia Falls 1.6	25 Boulder (Jefferson) -0.4	40 Dearborn near Craig	54 Saint Mary 1.7
12 Swan -0.4	26 Jefferson 0.6	41 Yellowstone above Livingston 3.1	
13 Flathead at Polson 0.9	27 Madison 1	42 Shields -0.6	
14 Mission Valley	28 Gallatin -0.7	43 Boulder (Yellowstone) 0.4	
15 Little Bitterroot	29 Missouri above Canyon Ferry 0	44 Stillwater 0.7	