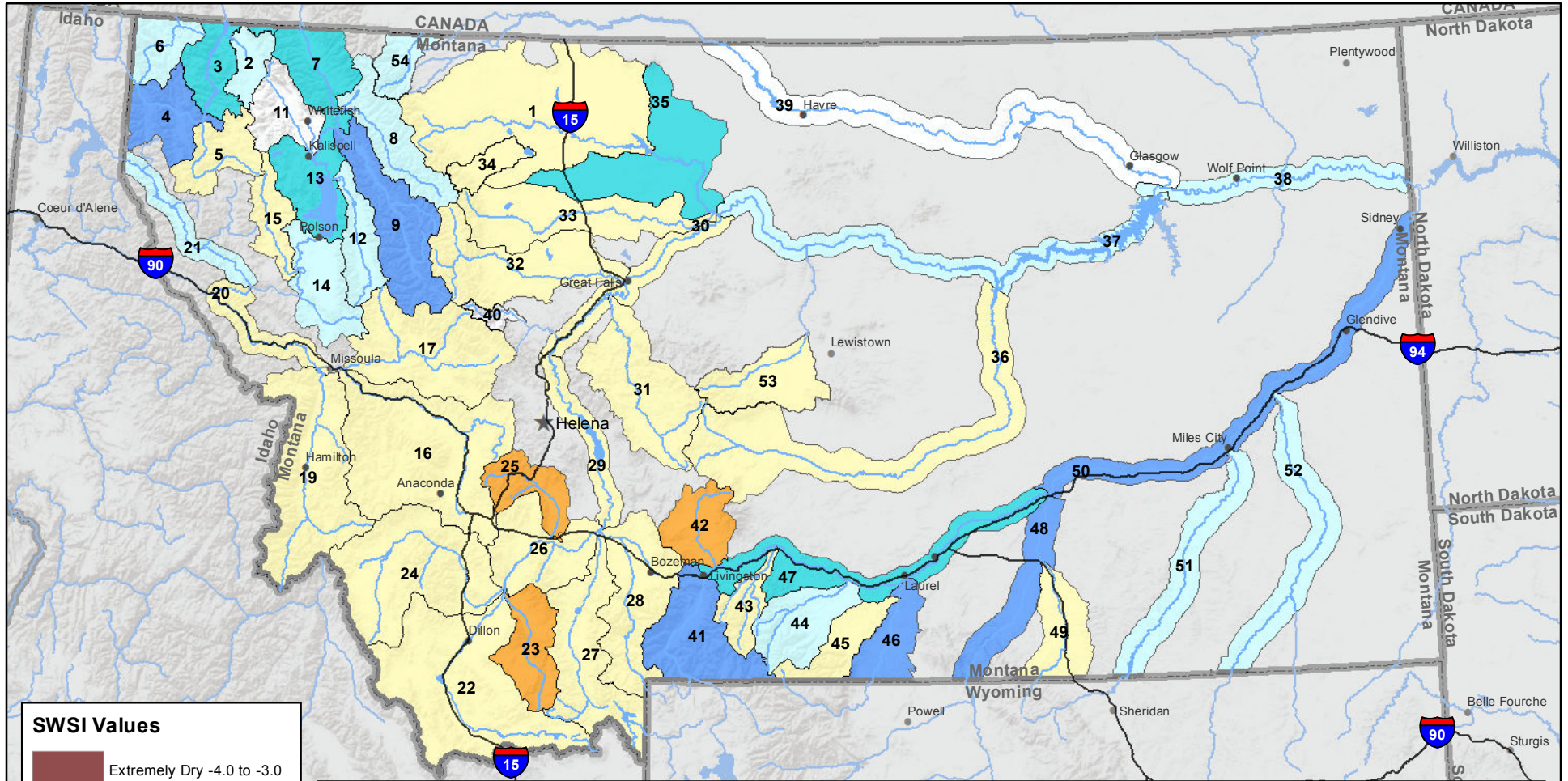
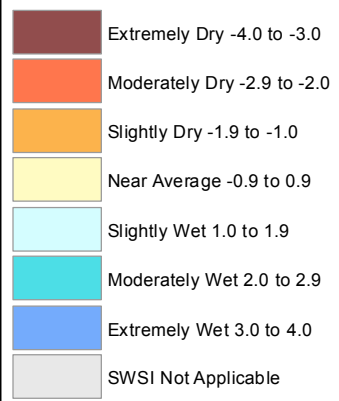


Montana Data Collection Office Surface Water Supply Index (SWSI) April 1, 2017



SWSI Values



RIVER INDEX & SWSI VALUES

1 Marias above Tiber Reservoir 0.52	16 Clark Fork above Milltown 0.69	30 Missouri below Canyon Ferry 0	45 Rock/Red Lodge Creeks -0.52
2 Tobacco 1.39	17 Blackfoot 0.17	31 Smith -0.76	46 Clarks Fork Yellowstone 3.47
3 Kootenai Ft. Steele to Libby Dam 2.95	18 Clark Fork above Missoula 0.52	32 Sun 0.87	47 Yellowstone above Bighorn River 2.527
4 Kootenai below Libby Dam 3.62	19 Bitterroot 0.35	33 Teton 0.95	48 Bighorn below Bighorn Lake 3.18535
5 Fisher 0.87	20 Clark Fork River below Bitterroot 0.469	34 Birch/Dupuyer Creeks -0.69	49 Little Bighorn 0
6 Yaak 1.39	21 Clark Fork River below Flathead 1.61524	35 Marias 2.43	50 Yellowstone below Bighorn 3.18535
7 North Fk. Flathead 2.08	22 Beaverhead 0.17	36 Musselshell -0.87	51 Tongue 1.56
8 Middle Fk. Flathead 1.39	23 Ruby -1.39	37 Missouri above Fort Peck 1.2915	52 Powder 1.04
9 South Fk. Flathead 3.47	24 Big Hole 0	38 Missouri below Fort Peck 1.04	53 Upper Judith 0.2
10 Flathead at Columbia Falls 2.95	25 Boulder (Jefferson) -1.22	40 Dearborn near Craig	54 Saint Mary 1.74
12 Swan 1.39	26 Jefferson 0.42	41 Yellowstone above Livingston 3.13	
13 Flathead at Polson 2.26	27 Madison 0.35	42 Shields -1.04	
14 Mission Valley 1.62	28 Gallatin -0.69	43 Boulder (Yellowstone) 0	
15 Little Bitterroot -0.7	29 Missouri above Canyon Ferry -0.17	44 Stillwater 1.74	

Note: Data used to generate this map are PROVISIONAL and SUBJECT TO CHANGE

