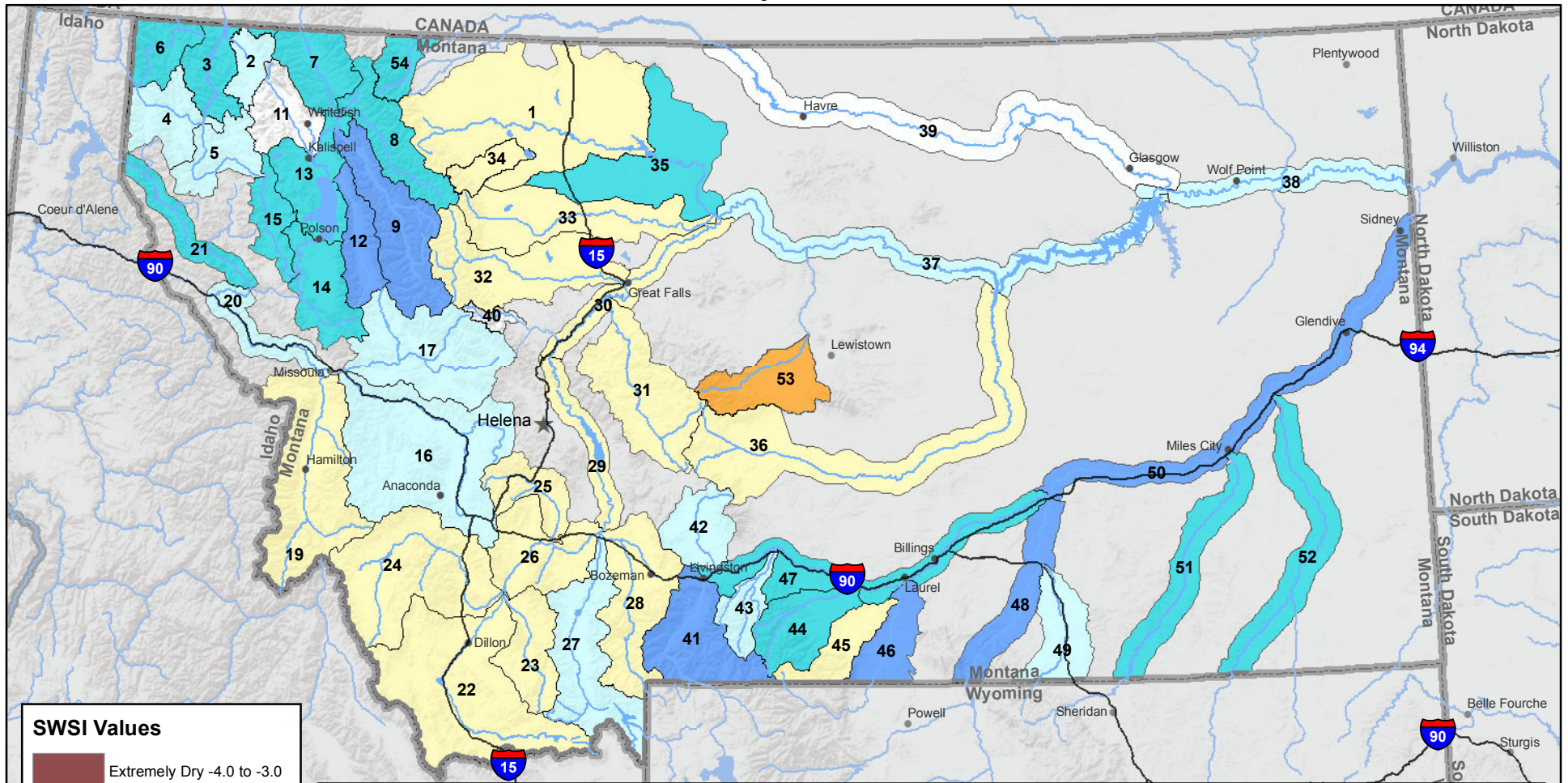
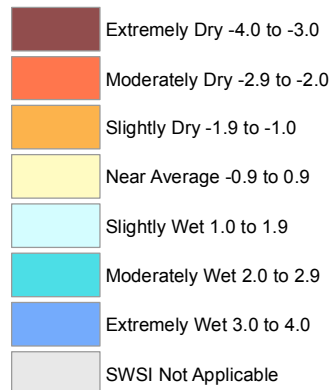


# Montana Data Collection Office Surface Water Supply Index (SWSI) May 1, 2017



### SWSI Values



### RIVER INDEX & SWSI VALUES

1 Marias above Tiber Reservoir 0.69	16 Clark Fork above Milltown 1.04	30 Missouri below Canyon Ferry 0.52	45 Rock/Red Lodge Creeks 0.35
2 Tobacco 1.56	17 Blackfoot 1.39	31 Smith 0.38	46 Clarks Fork Yellowstone 3.47
3 Kootenai Ft. Steele to Libby Dam 2.78	18 Clark Fork above Missoula 1.39	32 Sun 0.69	47 Yellowstone above Bighorn River 2.78
4 Kootenai below Libby Dam 1.99	19 Bitterroot 0.87	33 Teton 0.95	48 Bighorn below Bighorn Lake 3.99
5 Fisher 1.56	20 Clark Fork River below Bitterroot 1.23	34 Birch/Dupuyer Creeks -0.69	49 Little Bighorn 1.56
6 Yaak 2.26	21 Clark Fork River below Flathead 2.0	35 Marias 2.6	50 Yellowstone below Bighorn 3.33
7 North Fk. Flathead 2.43	22 Beaverhead 0.69	36 Musselshell -0.17	51 Tongue 2.78
8 Middle Fk. Flathead 2.08	23 Ruby -0.17	37 Missouri above Fort Peck 1.61	52 Powder 2.95
9 South Fk. Flathead 3.99	24 Big Hole 0.35	38 Missouri below Fort Peck 1.22	53 Upper Judith -1.9
10 Flathead at Columbia Falls 3.65	25 Boulder (Jefferson) -0.17	40 Dearborn near Craig	54 Saint Mary 2.08
12 Swan 3.3	26 Jefferson 0.83	41 Yellowstone above Livingston 3.3	
13 Flathead at Polson 2.43	27 Madison 1.22	42 Shields 1.88	
14 Mission Valley 2.31	28 Gallatin 0.17	43 Boulder (Yellowstone) 1.04	
15 Little Bitterroot 2.9	29 Missouri above Canyon Ferry 0.17	44 Stillwater 2.08	

Note: Data used to generate this map are PROVISIONAL and SUBJECT TO CHANGE