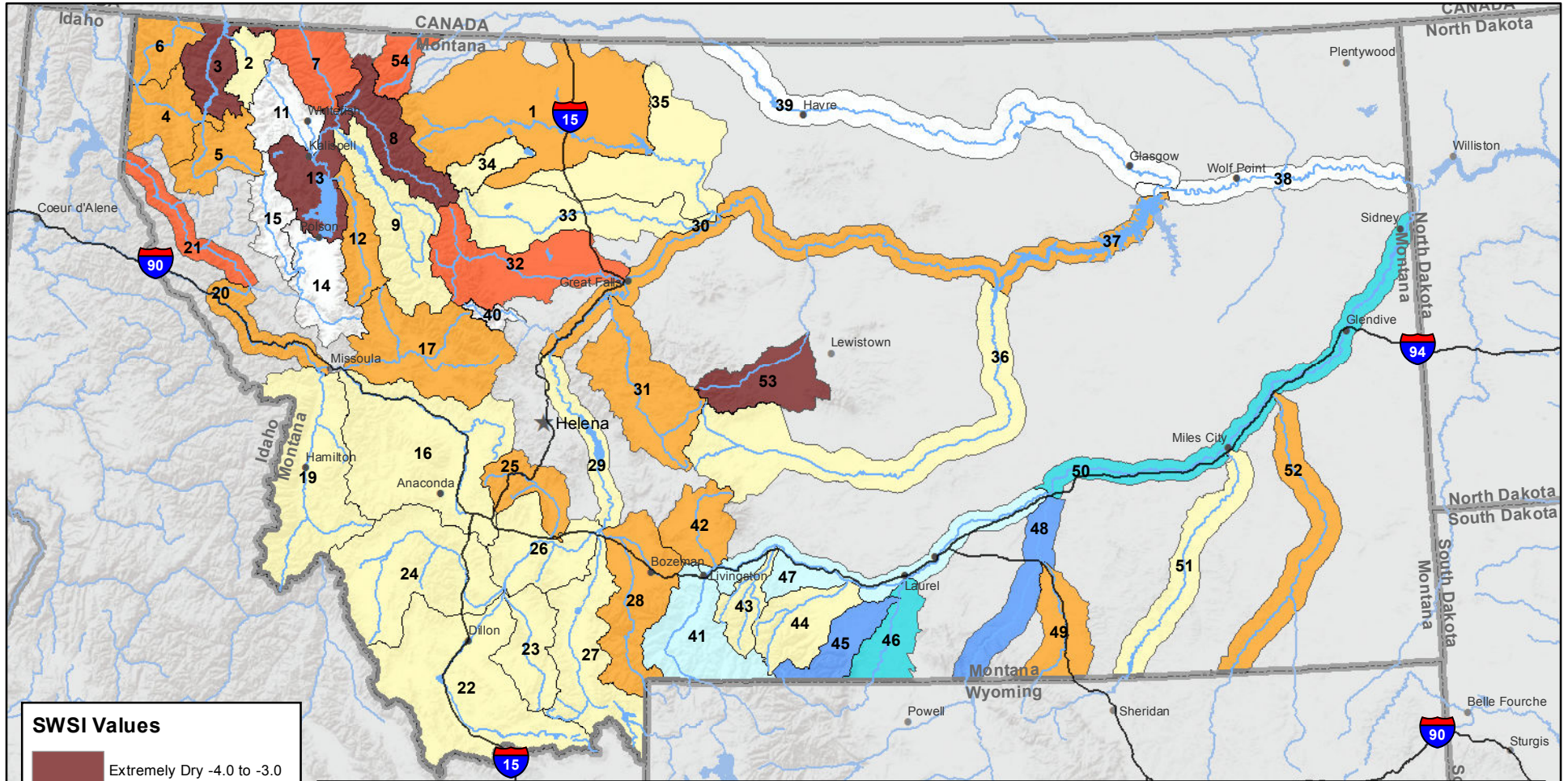
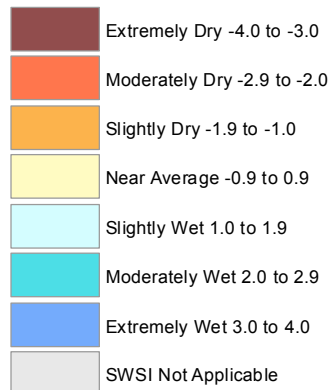


Montana Data Collection Office Surface Water Supply Index (SWSI) October 1, 2017



SWSI Values



RIVER INDEX & SWSI VALUES

1 Marias above Tiber Reservoir -1.4	16 Clark Fork above Milltown -0.9	30 Missouri below Canyon Ferry -1.2	45 Rock/Red Lodge Creeks 3
2 Tobacco -0.9	17 Blackfoot -1	31 Smith -1.9	46 Clarks Fork Yellowstone 2.6
3 Kootenai Ft. Steele to Libby Dam -3.1	18 Clark Fork above Missoula -1.2	32 Sun -2.8	47 Yellowstone above Bighorn River 1
4 Kootenai below Libby Dam -1.8	19 Bitterroot -0.7	33 Teton -0.4	48 Bighorn below Bighorn Lake 3.6
5 Fisher -1.7	20 Clark Fork River below Bitterroot -1.1	34 Birch/Dupuyer Creeks -0.9	49 Little Bighorn -1.4
6 Yaak -1.9	21 Clark Fork River below Flathead -2.5	35 Marias 0.2	50 Yellowstone below Bighorn 2.2
7 North Fk. Flathead -2.6	22 Beaverhead 0.2	36 Musselshell 0	51 Tongue -0.4
8 Middle Fk. Flathead -3.1	23 Ruby -0.2	37 Missouri above Fort Peck -1.1	52 Powder -1.7
9 South Fk. Flathead 0.4	24 Big Hole -0.2	38 Missouri below Fort Peck	53 Upper Judith -3.2
10 Flathead at Columbia Falls -0.2	25 Boulder (Jefferson) -1	40 Dearborn near Craig	54 Saint Mary -2.8
12 Swan -1.2	26 Jefferson 0.2	41 Yellowstone above Livingston 1	
13 Flathead at Polson -3.3	27 Madison 0.9	42 Shields -1	
14 Mission Valley	28 Gallatin -1.4	43 Boulder (Yellowstone) -0.5	
15 Little Bitterroot	29 Missouri above Canyon Ferry -0.5	44 Stillwater 0.5	

Note: Data used to generate this map are PROVISIONAL and SUBJECT TO CHANGE