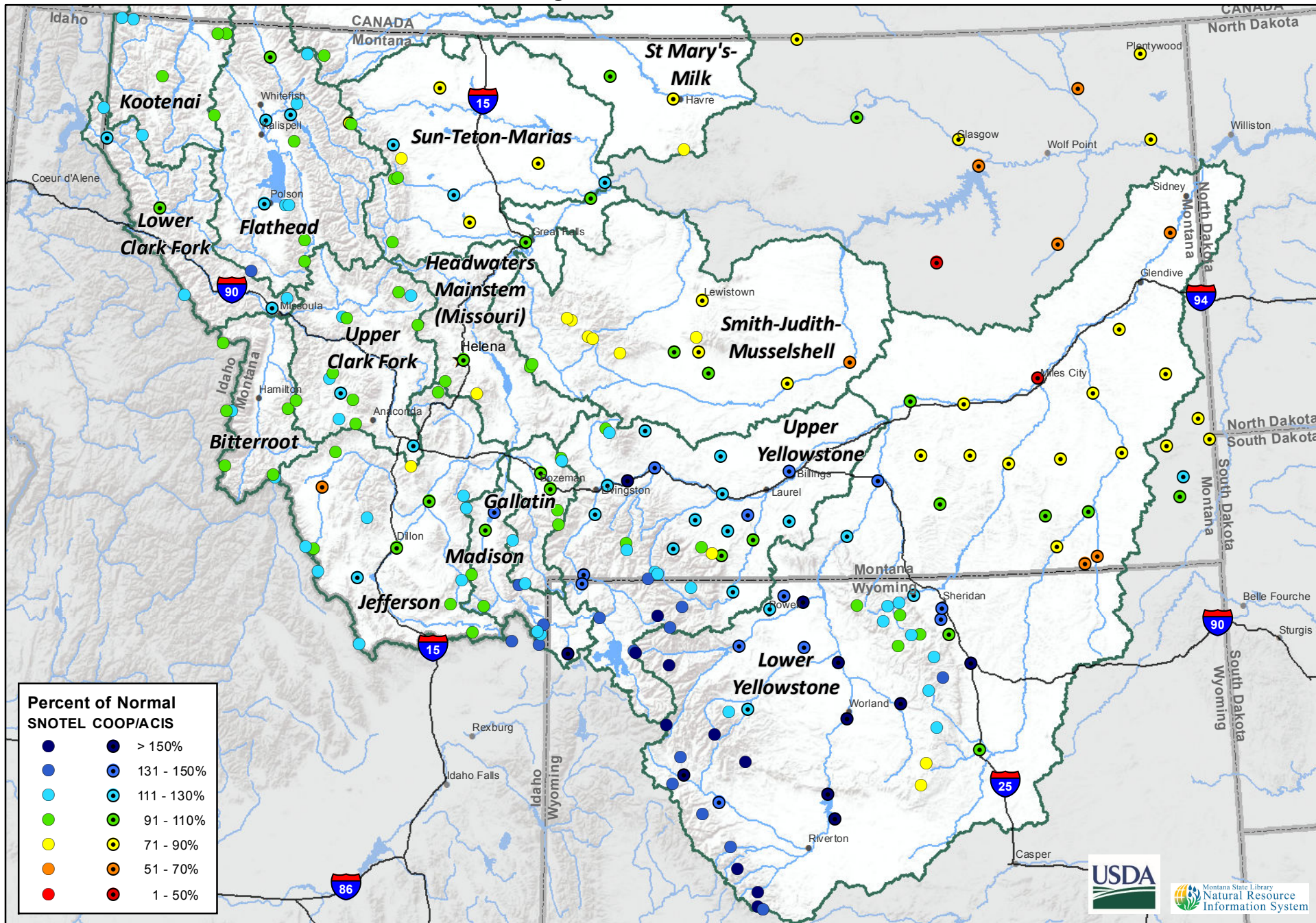


Montana Data Collection Office
 Water Year to Date Precipitation
 Percentage of Normal - October 1, 2017



**Percent of Normal
 SNOTEL COOP/ACIS**

●	●	> 150%
●	●	131 - 150%
●	●	111 - 130%
●	●	91 - 110%
●	●	71 - 90%
●	●	51 - 70%
●	●	1 - 50%

