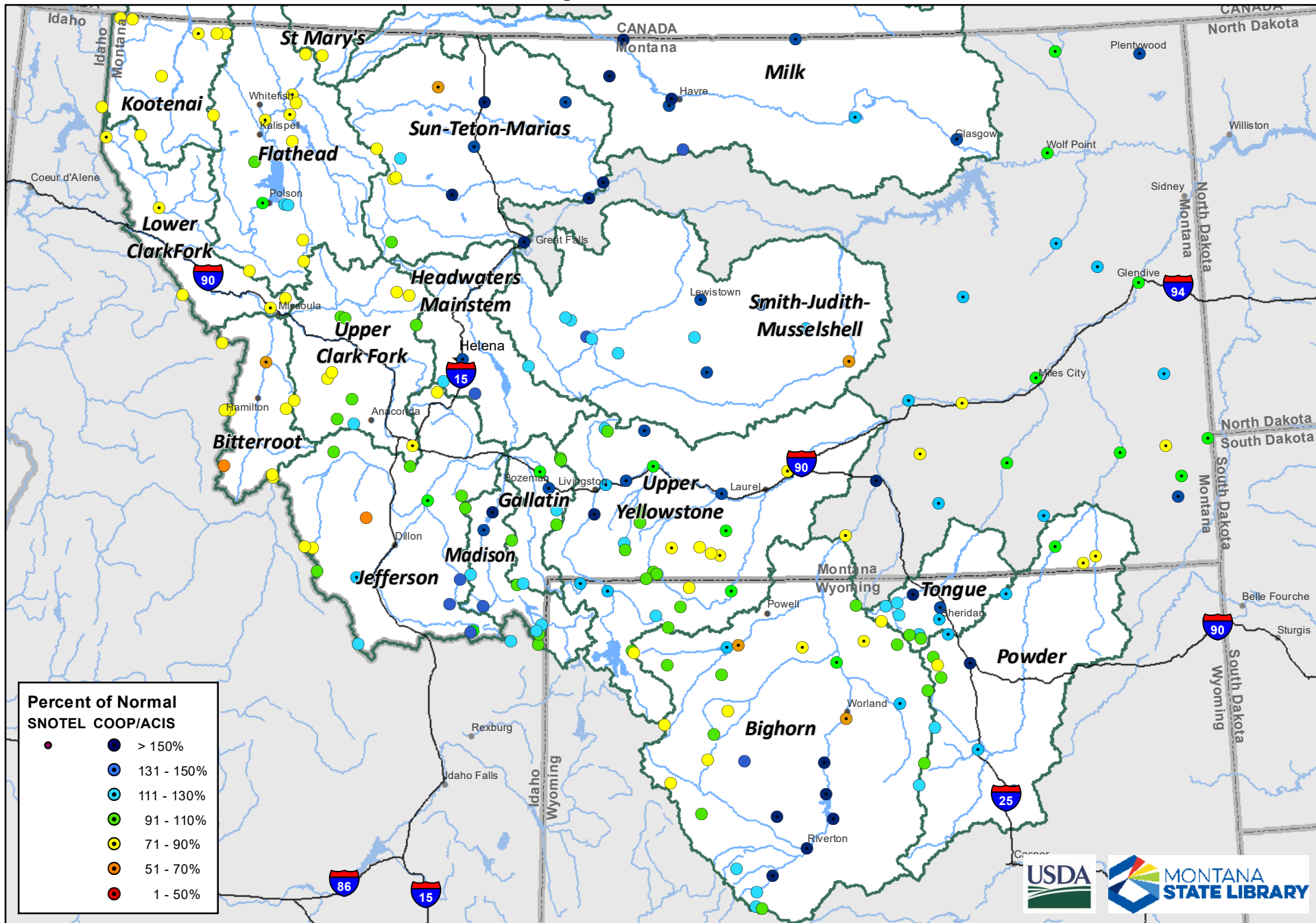


Montana Data Collection Office  
 Water Year to Date Precipitation  
 Percentage of Normal - March 1, 2023



**Percent of Normal SNOTEL COOP/ACIS**

●	> 150%
●	131 - 150%
●	111 - 130%
●	91 - 110%
●	71 - 90%
●	51 - 70%
●	1 - 50%