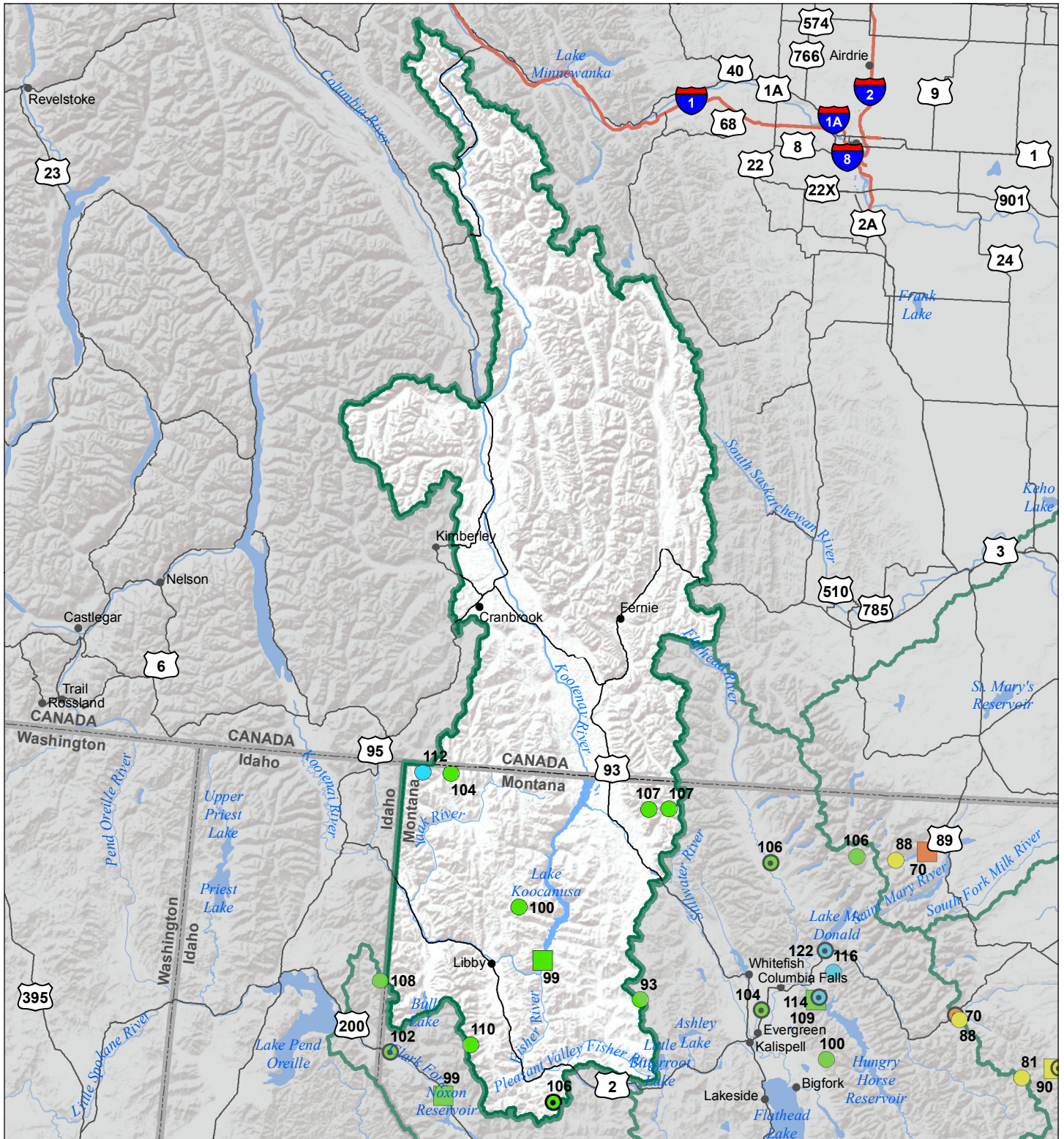


Kootenai River Basin Water Year to Date Precipitation and Reservoir Levels Percentage of Normal September 1, 2016

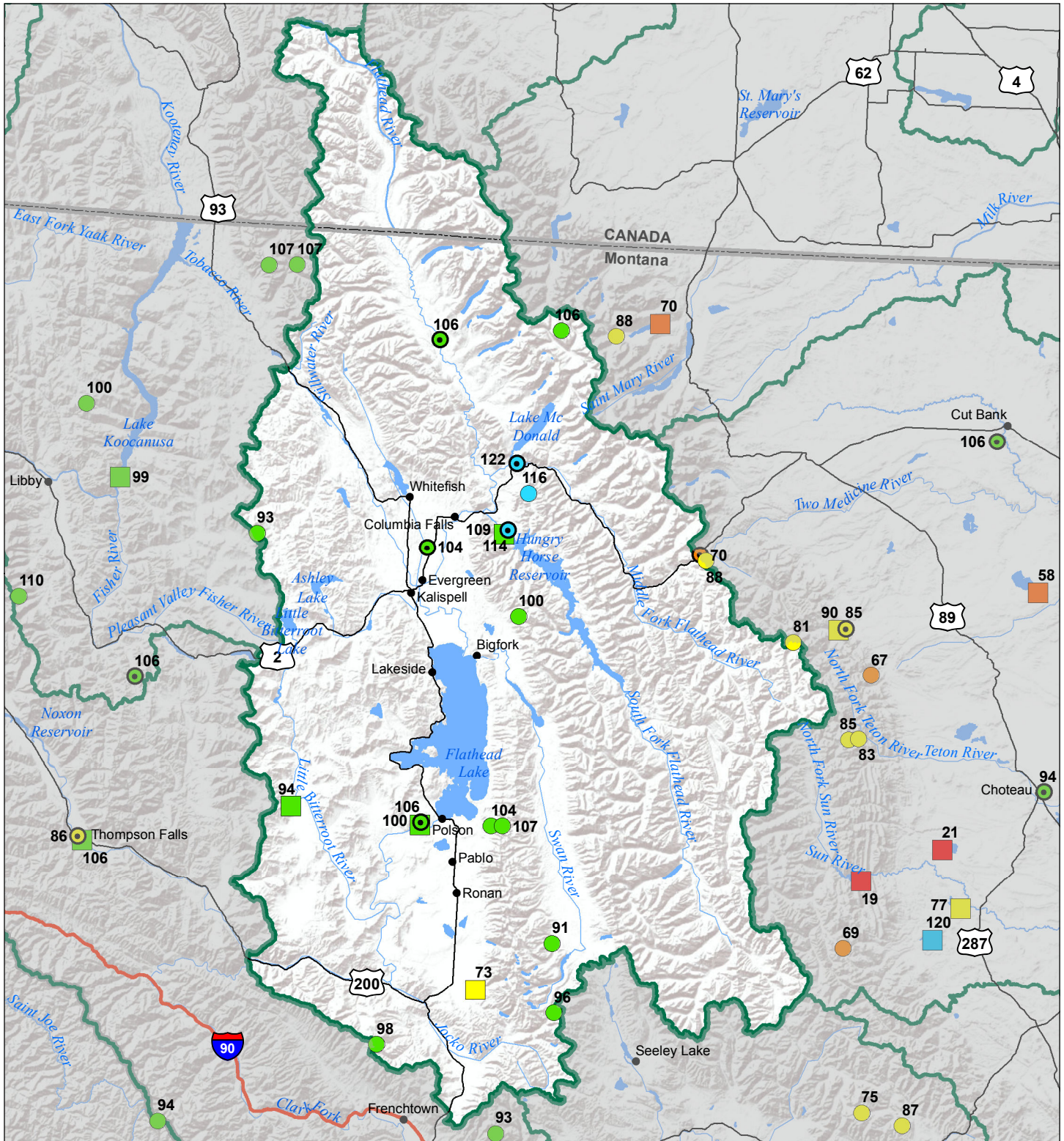


Precipitation Percent of Normal			
SNOTEL		COOP/ACIS	
● > 150%	● 71 - 90%	● > 150%	● 71 - 90%
● 131 - 150%	● 51 - 70%	● 131 - 150%	● 51 - 70%
● 111 - 130%	● 1 - 50%	● 111 - 130%	● 1 - 50%
● 91 - 110%		● 91 - 110%	

Reservoirs Percent of Normal	
■ > 150%	
■ 131 - 150%	
■ 111 - 130%	
■ 91 - 110%	
■ 71 - 90%	
■ 51 - 70%	
■ 1 - 50%	



Flathead River Basin Water Year to Date Precipitation and Reservoir Levels Percentage of Normal September 1, 2016



Precipitation Percent of Normal

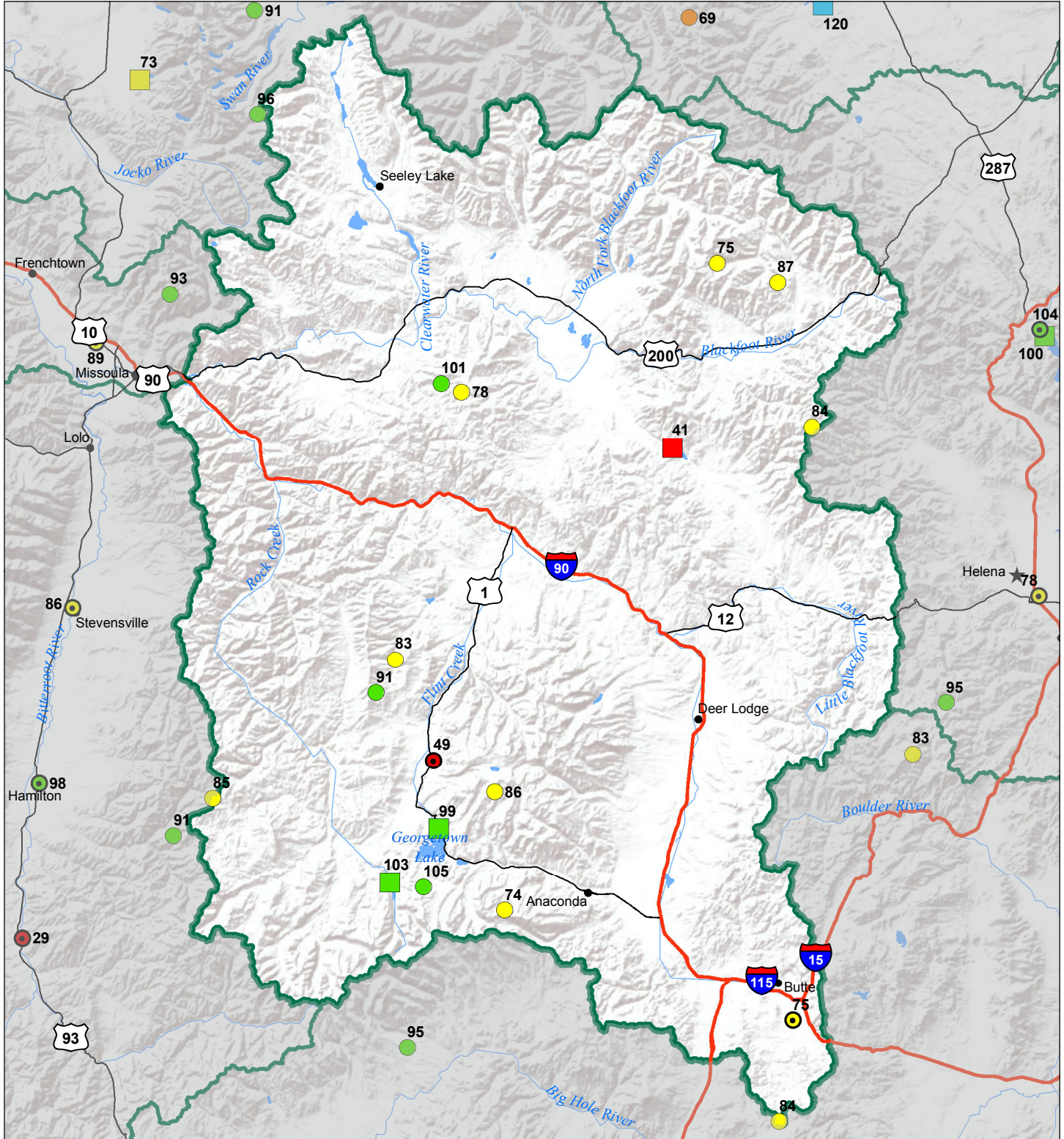
SNOTEL		COOP/ACIS	
● > 150%	● 71 - 90%	■ > 150%	■ 71 - 90%
● 131 - 150%	● 51 - 70%	■ 131 - 150%	■ 51 - 70%
● 111 - 130%	● 1 - 50%	■ 111 - 130%	■ 1 - 50%
● 91 - 110%		■ 91 - 110%	

Reservoirs Percent of Normal

■ > 150%
■ 131 - 150%
■ 111 - 130%
■ 91 - 110%
■ 71 - 90%
■ 51 - 70%
■ 1 - 50%



Upper Clark Fork River Basin Water Year to Date Precipitation and Reservoir Levels Percentage of Normal September 1, 2016

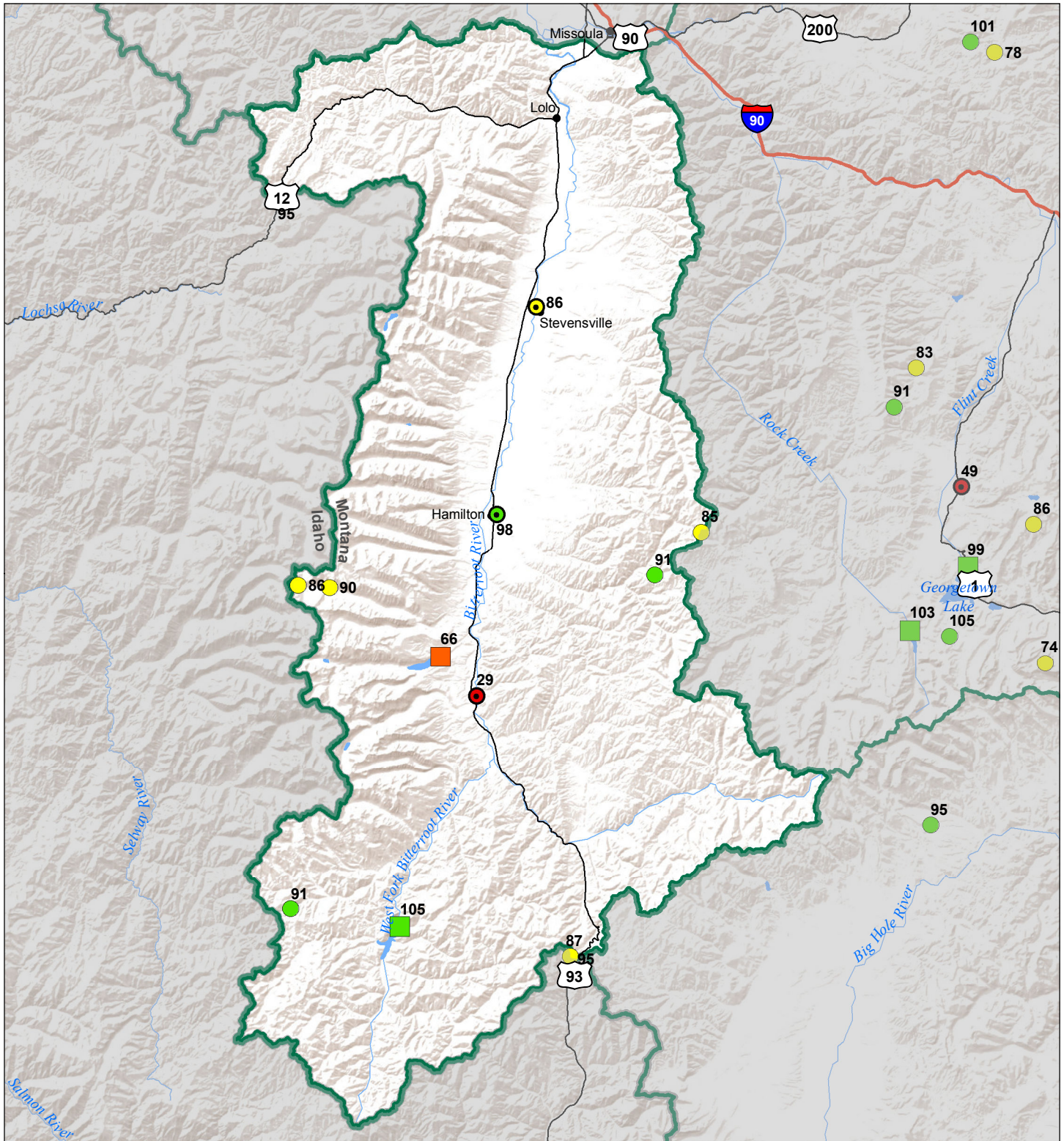


Precipitation Percent of Normal	
SNOTEL	COOP/ACIS
● > 150%	● > 150%
● 131 - 150%	● 131 - 150%
● 111 - 130%	● 111 - 130%
● 91 - 110%	● 91 - 110%
● 71 - 90%	● 71 - 90%
● 51 - 70%	● 51 - 70%
● 1 - 50%	● 1 - 50%

Reservoirs Percent of Normal	
■ > 150%	● > 150%
■ 131 - 150%	● 131 - 150%
■ 111 - 130%	● 111 - 130%
■ 91 - 110%	● 91 - 110%
■ 71 - 90%	● 71 - 90%
■ 51 - 70%	● 51 - 70%
■ 1 - 50%	● 1 - 50%



Bitterroot River Basin Water Year to Date Precipitation and Reservoir Levels Percentage of Normal September 1, 2016



Precipitation Percent of Normal

SNOTEL		COOP/ACIS	
● > 150%	● 71 - 90%	● > 150%	● 71 - 90%
● 131 - 150%	● 51 - 70%	● 131 - 150%	● 51 - 70%
● 111 - 130%	● 1 - 50%	● 111 - 130%	● 1 - 50%
● 91 - 110%		● 91 - 110%	

Reservoirs Percent of Normal

■ > 150%
■ 131 - 150%
■ 111 - 130%
■ 91 - 110%
■ 71 - 90%
■ 51 - 70%
■ 1 - 50%

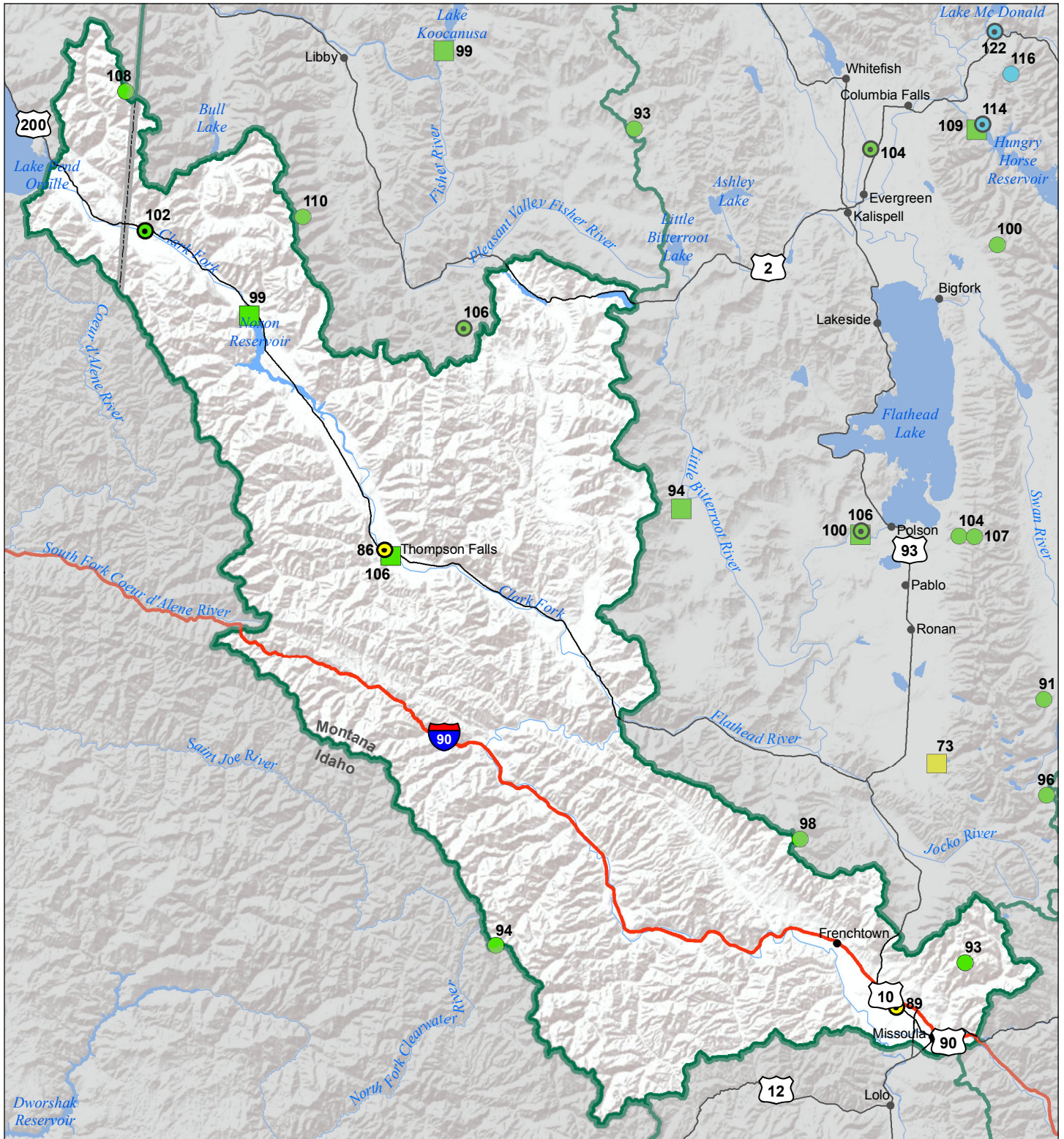


Lower Clark Fork River Basin

Water Year to Date Precipitation and Reservoir Levels

Percentage of Normal

September 1, 2016



Precipitation Percent of Normal

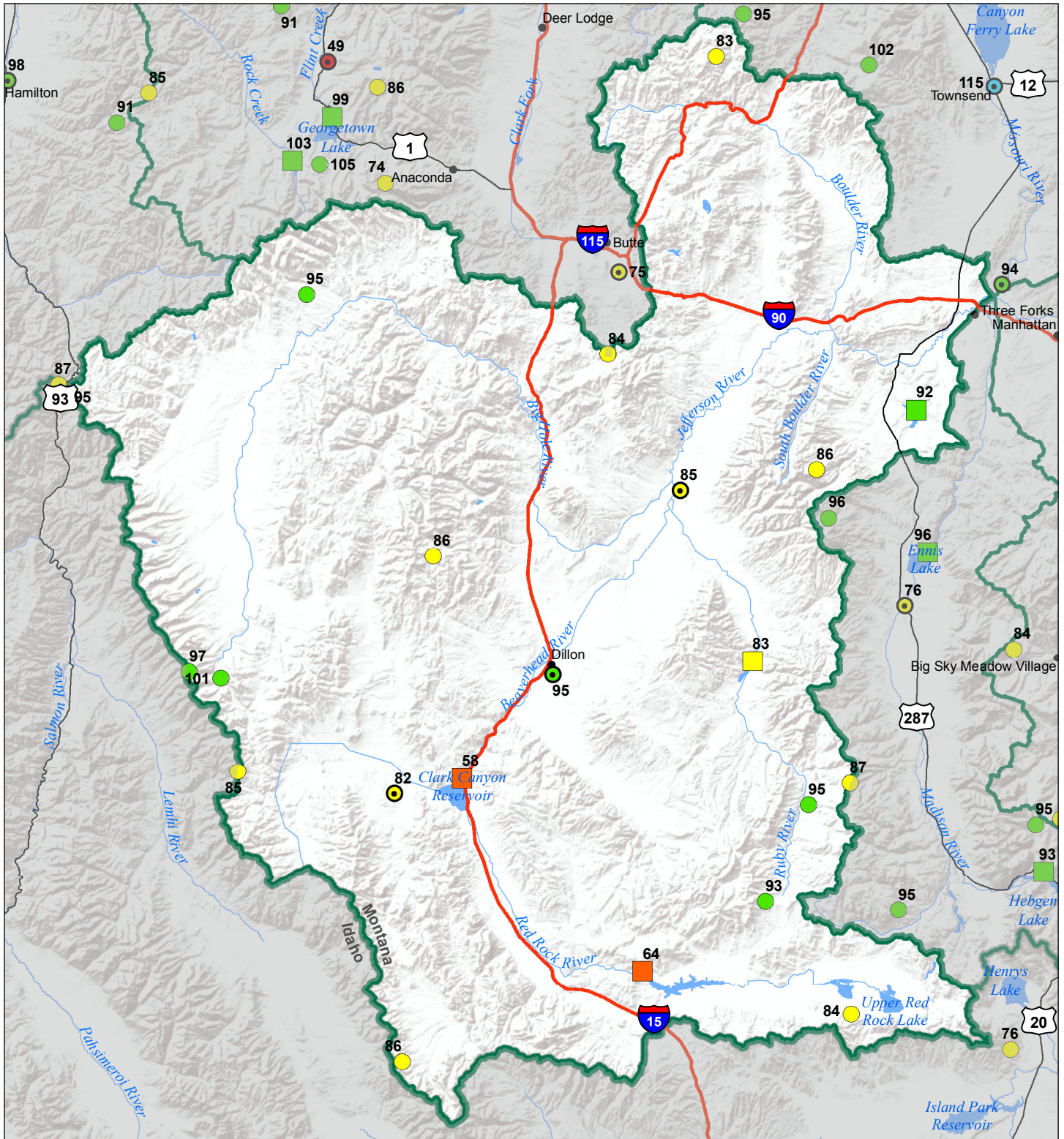
SNOTEL		COOP/ACIS	
● > 150%	● 71 - 90%	● > 150%	● 71 - 90%
● 131 - 150%	● 51 - 70%	● 131 - 150%	● 51 - 70%
● 111 - 130%	● 1 - 50%	● 111 - 130%	● 1 - 50%
● 91 - 110%		● 91 - 110%	

Reservoirs Percent of Normal

■ > 150%
■ 131 - 150%
■ 111 - 130%
■ 91 - 110%
■ 71 - 90%
■ 51 - 70%
■ 1 - 50%



Jefferson River Basin Water Year to Date Precipitation and Reservoir Levels Percentage of Normal September 1, 2016

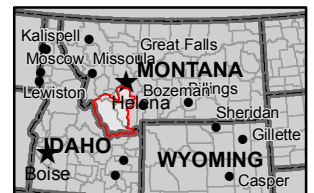


Precipitation Percent of Normal

SNOTEL		COOP/ACIS	
● > 150%	● 71 - 90%	● > 150%	● 71 - 90%
● 131 - 150%	● 51 - 70%	● 131 - 150%	● 51 - 70%
● 111 - 130%	● 1 - 50%	● 111 - 130%	● 1 - 50%
● 91 - 110%		● 91 - 110%	

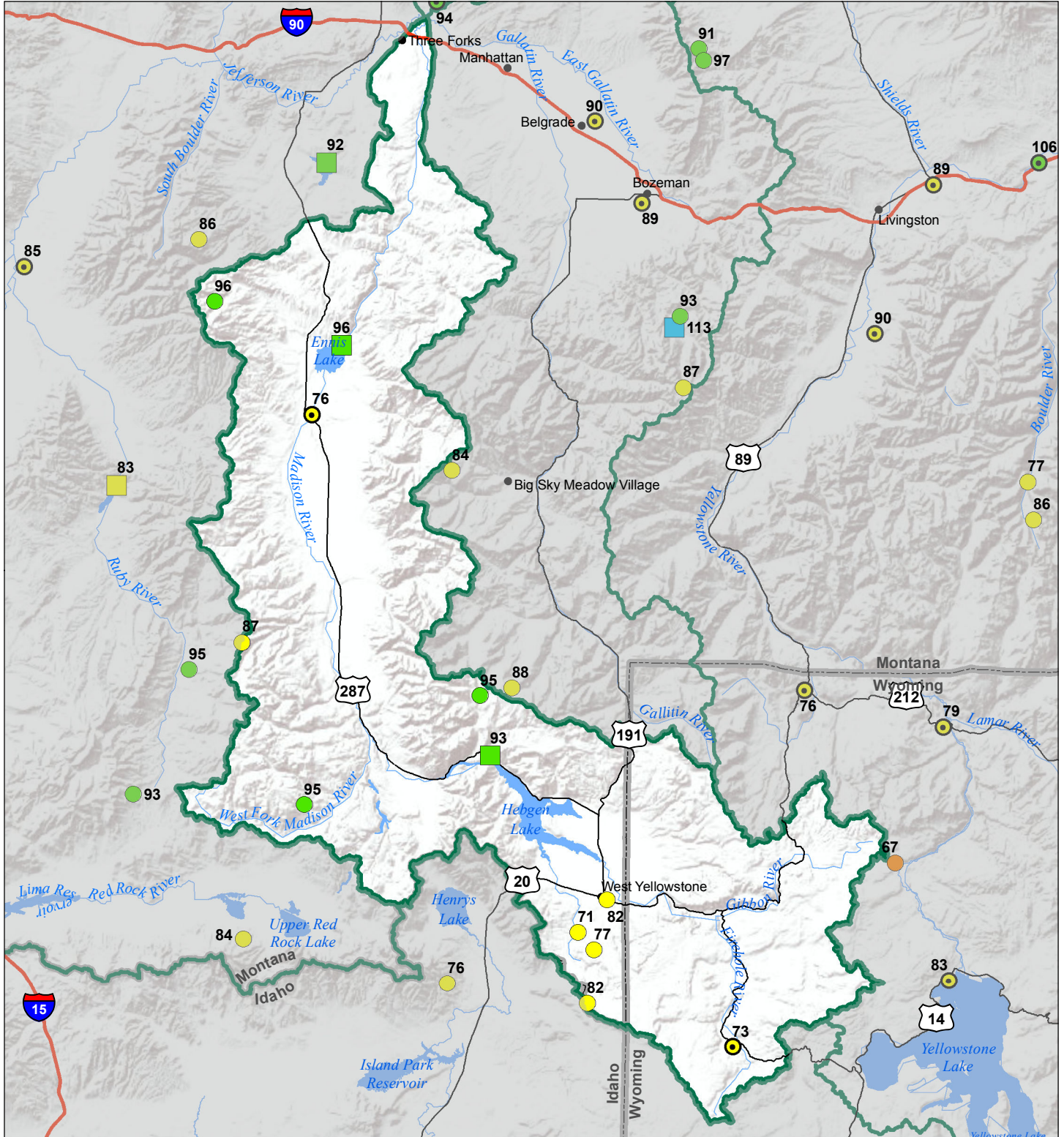
Reservoirs Percent of Normal

■ > 150%
■ 131 - 150%
■ 111 - 130%
■ 91 - 110%
■ 71 - 90%
■ 51 - 70%
■ 1 - 50%



Madison River Basin

Water Year to Date Precipitation and Reservoir Levels Percentage of Normal September 1, 2016



Precipitation Percent of Normal

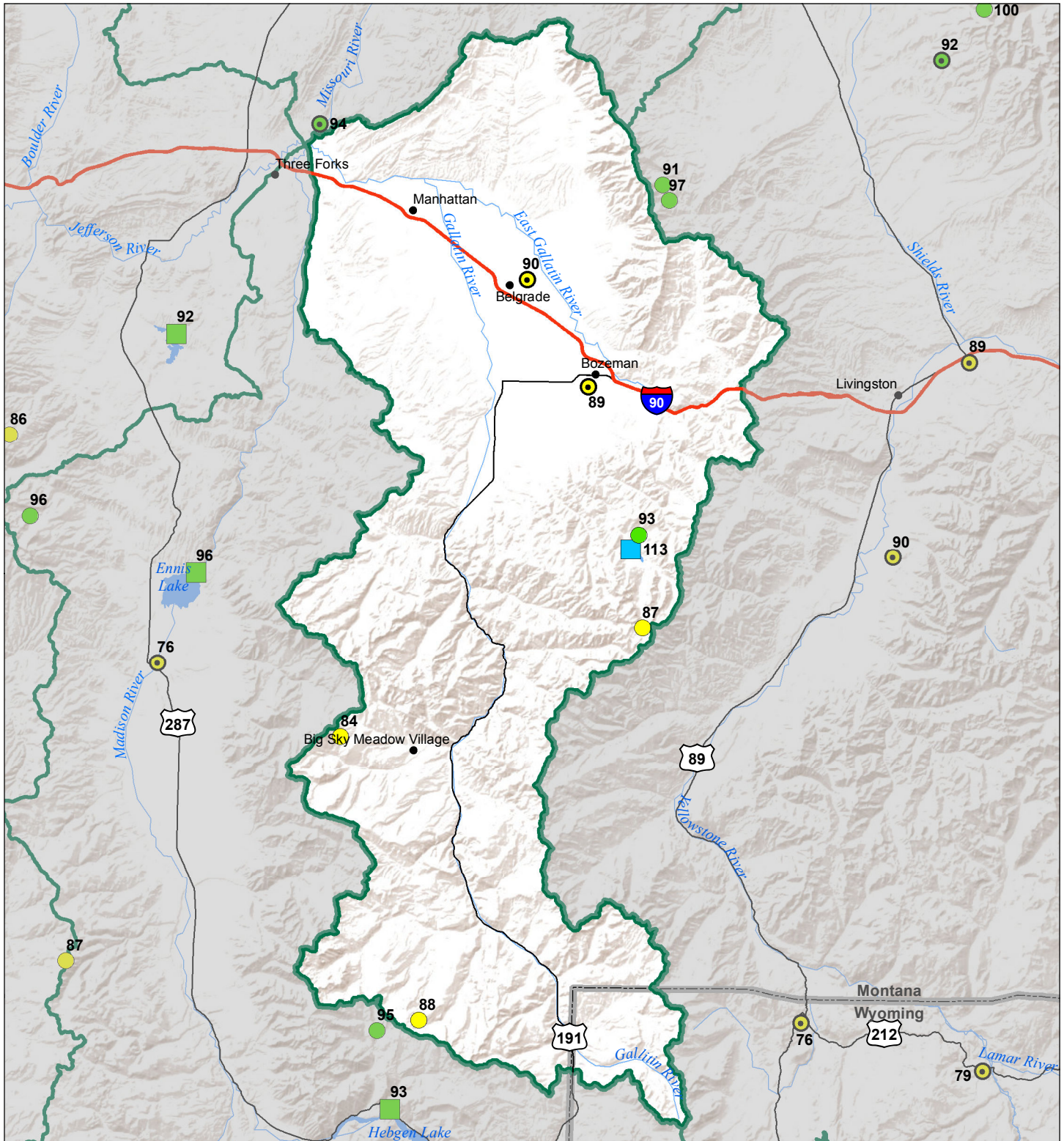
SNOTEL		COOP/ACIS	
● > 150%	● 71 - 90%	● > 150%	● 71 - 90%
● 131 - 150%	● 51 - 70%	● 131 - 150%	● 51 - 70%
● 111 - 130%	● 1 - 50%	● 111 - 130%	● 1 - 50%
● 91 - 110%		● 91 - 110%	

Reservoirs Percent of Normal

■ > 150%
■ 131 - 150%
■ 111 - 130%
■ 91 - 110%
■ 71 - 90%
■ 51 - 70%
■ 1 - 50%



Gallatin River Basin Water Year to Date Precipitation and Reservoir Levels Percentage of Normal September 1, 2016



Precipitation Percent of Normal

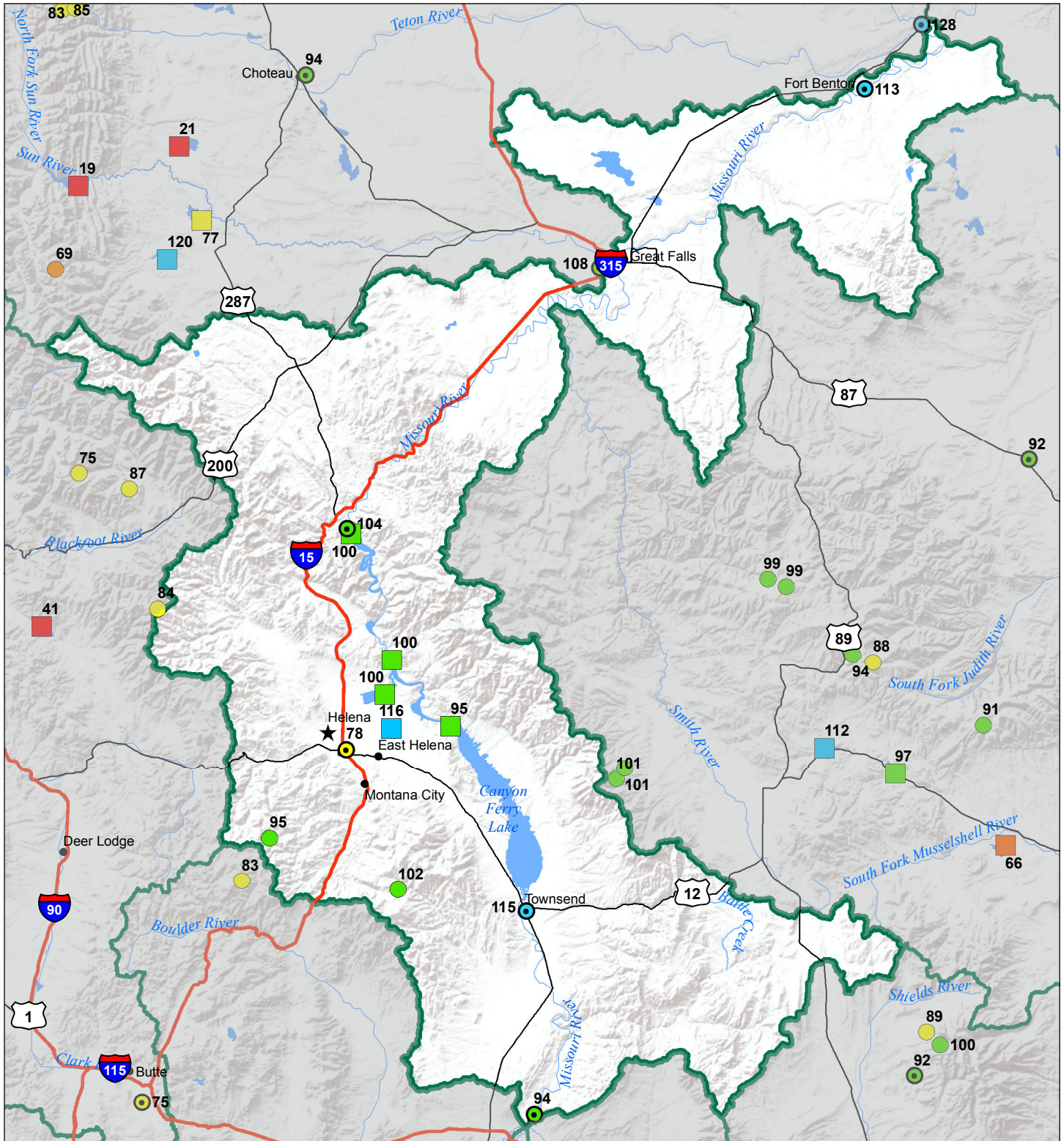
SNOTEL		COOP/ACIS	
● > 150%	● 71 - 90%	● > 150%	● 71 - 90%
● 131 - 150%	● 51 - 70%	● 131 - 150%	● 51 - 70%
● 111 - 130%	● 1 - 50%	● 111 - 130%	● 1 - 50%
● 91 - 110%		● 91 - 110%	

Reservoirs Percent of Normal

■ > 150%
■ 131 - 150%
■ 111 - 130%
■ 91 - 110%
■ 71 - 90%
■ 51 - 70%
■ 1 - 50%



Headwaters Mainstem (Missouri) River Basin Water Year to Date Precipitation and Reservoir Levels Percentage of Normal September 1, 2016



Precipitation Percent of Normal

SNOTEL		COOP/ACIS	
● > 150%	● 71 - 90%	● > 150%	● 71 - 90%
● 131 - 150%	● 51 - 70%	● 131 - 150%	● 51 - 70%
● 111 - 130%	● 1 - 50%	● 111 - 130%	● 1 - 50%
● 91 - 110%		● 91 - 110%	

Reservoirs Percent of Normal

■ > 150%
■ 131 - 150%
■ 111 - 130%
■ 91 - 110%
■ 71 - 90%
■ 51 - 70%
■ 1 - 50%

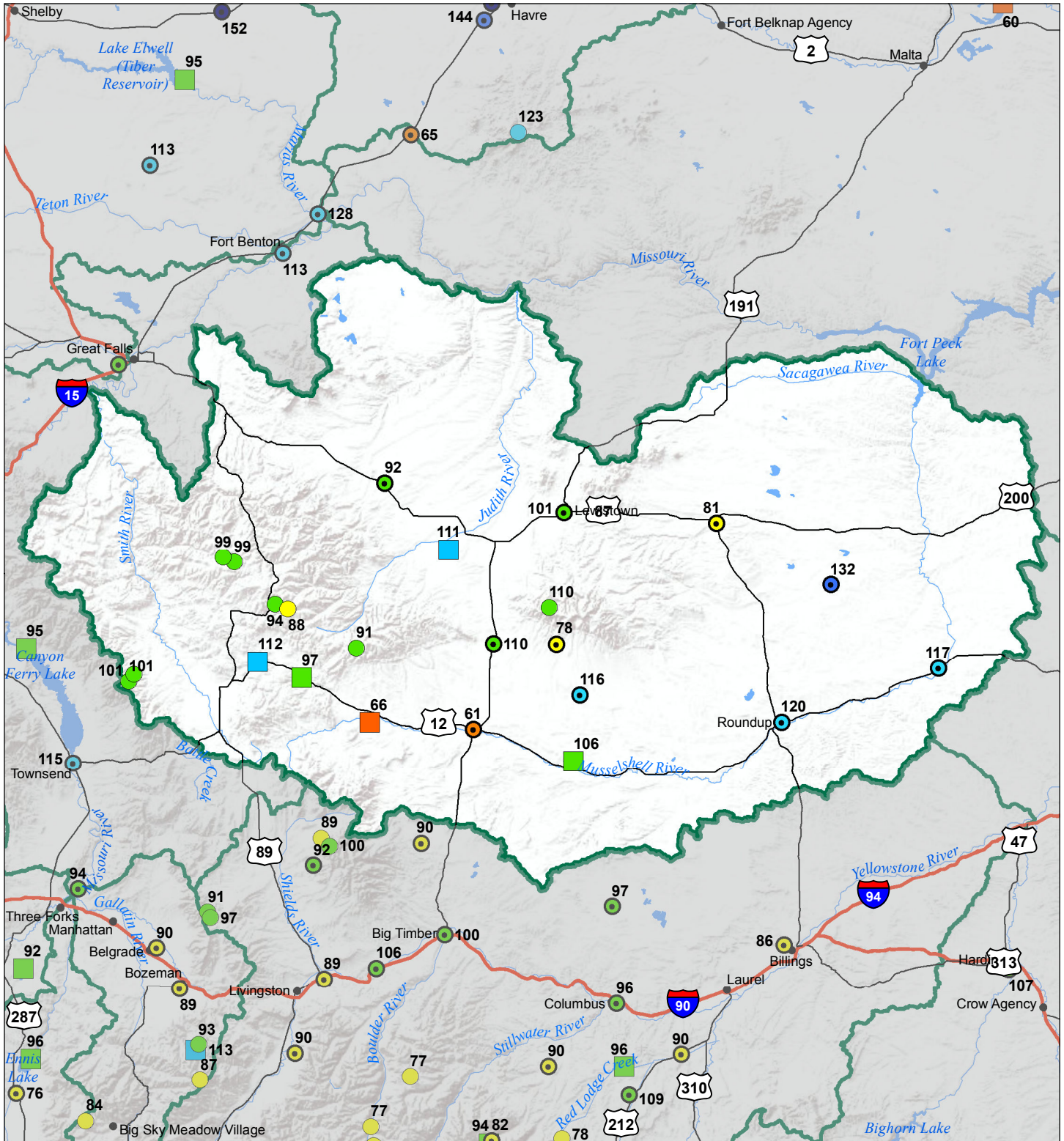


Smith-Judith-Musselshell River Basin

Water Year to Date Precipitation and Reservoir Levels

Percentage of Normal

September 1, 2016



Precipitation Percent of Normal

SNOTEL		COOP/ACIS	
● > 150%	● 71 - 90%	■ > 150%	■ 71 - 90%
● 131 - 150%	● 51 - 70%	■ 131 - 150%	■ 51 - 70%
● 111 - 130%	● 1 - 50%	■ 111 - 130%	■ 1 - 50%
● 91 - 110%		■ 91 - 110%	

Reservoirs Percent of Normal

■ > 150%
■ 131 - 150%
■ 111 - 130%
■ 91 - 110%
■ 71 - 90%
■ 51 - 70%
■ 1 - 50%

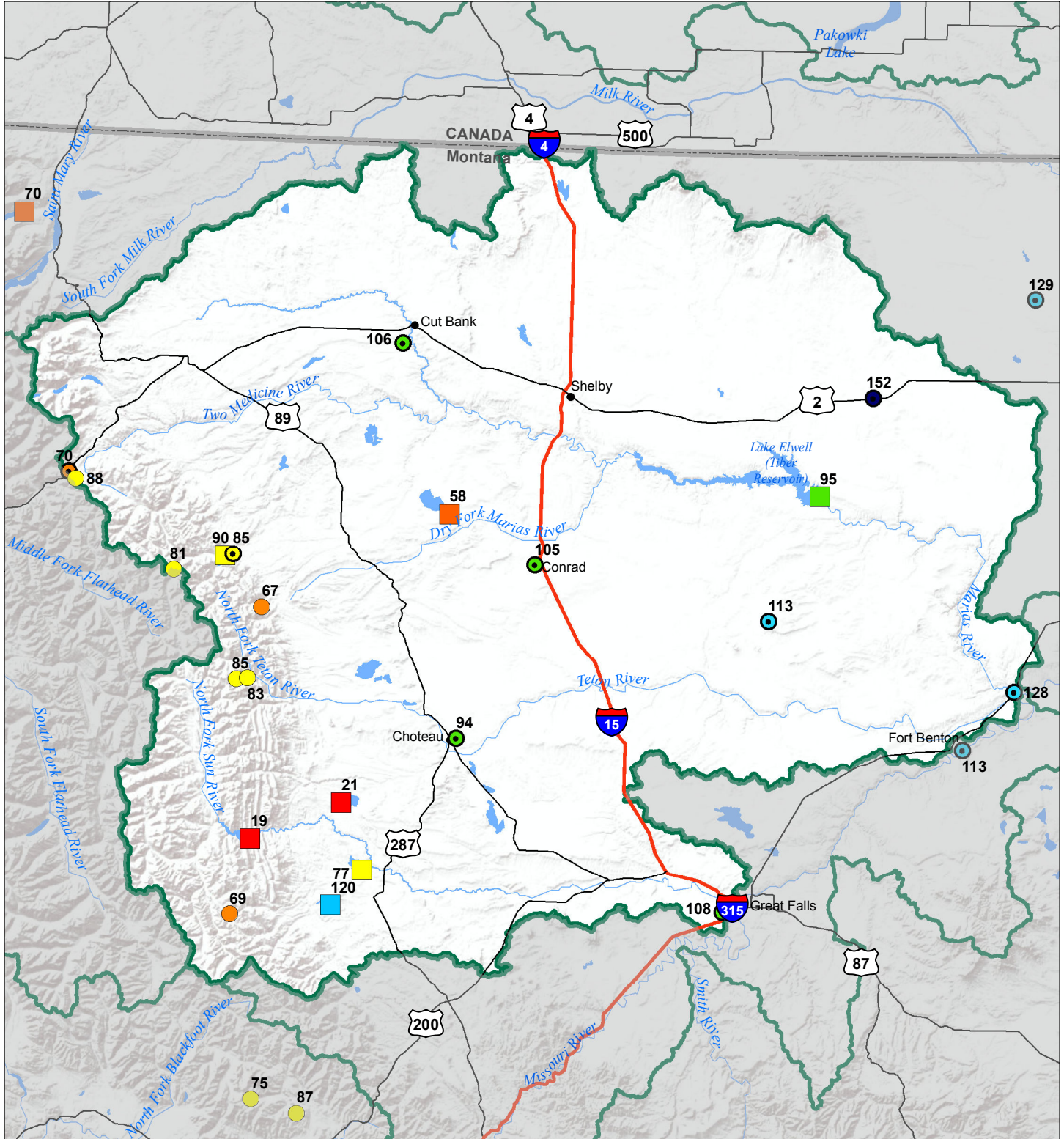


Sun-Teton-Marias River Basin

Water Year to Date Precipitation and Reservoir Levels

Percentage of Normal

September 1, 2016



Precipitation Percent of Normal	
SNOTEL	COOP/ACIS
● > 150%	● > 150%
● 131 - 150%	● 131 - 150%
● 111 - 130%	● 111 - 130%
● 91 - 110%	● 91 - 110%
● 71 - 90%	● 71 - 90%
● 51 - 70%	● 51 - 70%
● 1 - 50%	● 1 - 50%

Reservoirs Percent of Normal	
■ > 150%	● > 150%
■ 131 - 150%	● 131 - 150%
■ 111 - 130%	● 111 - 130%
■ 91 - 110%	● 91 - 110%
■ 71 - 90%	● 71 - 90%
■ 51 - 70%	● 51 - 70%
■ 1 - 50%	● 1 - 50%

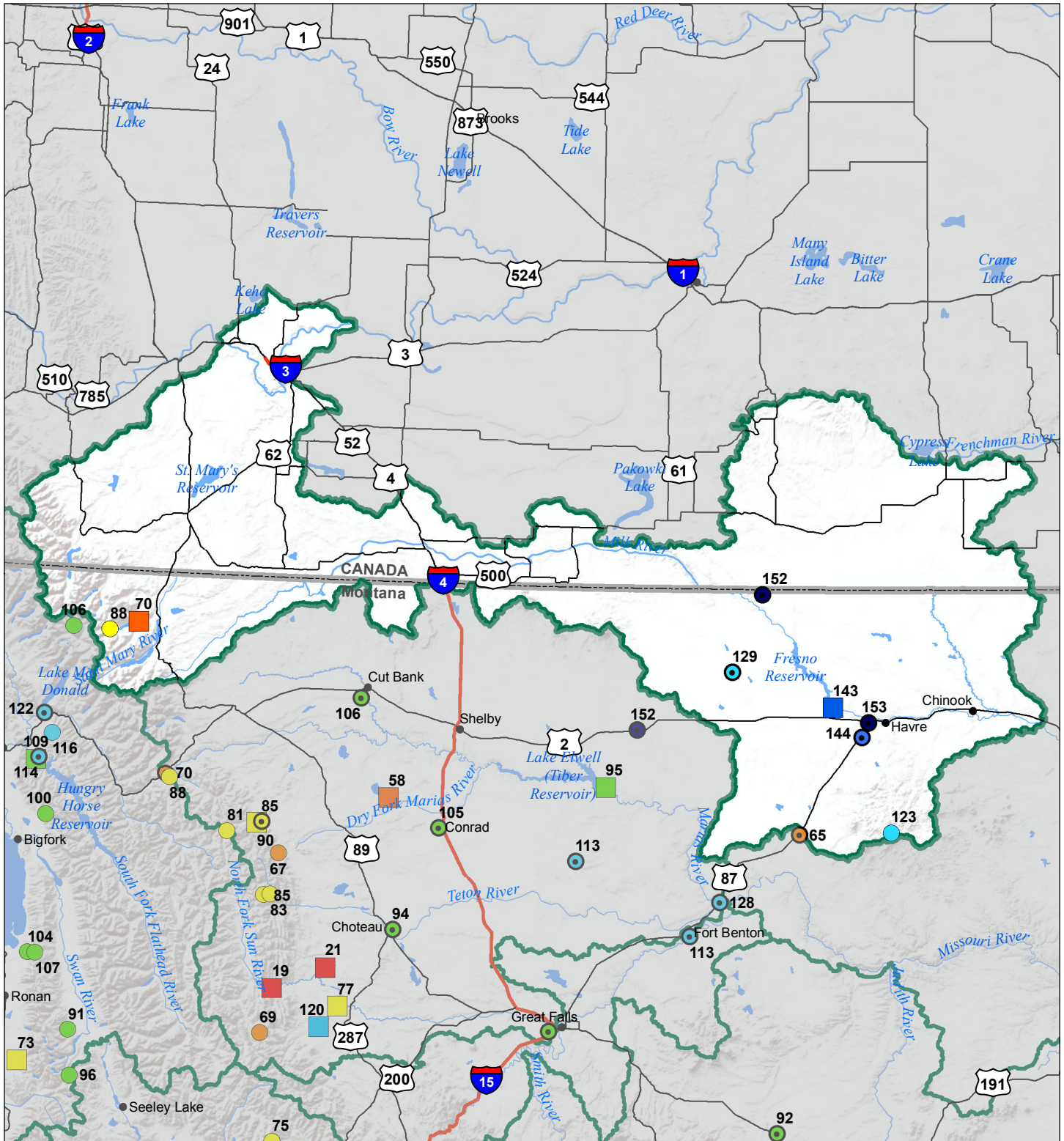


St Mary's-Milk River Basin

Water Year to Date Precipitation and Reservoir Levels

Percentage of Normal

September 1, 2016



Precipitation Percent of Normal

SNOTEL

- > 150%
- 131 - 150%
- 111 - 130%
- 91 - 110%
- 71 - 90%
- 51 - 70%
- 1 - 50%

COOP/ACIS

- > 150%
- 131 - 150%
- 111 - 130%
- 91 - 110%
- 71 - 90%
- 51 - 70%
- 1 - 50%

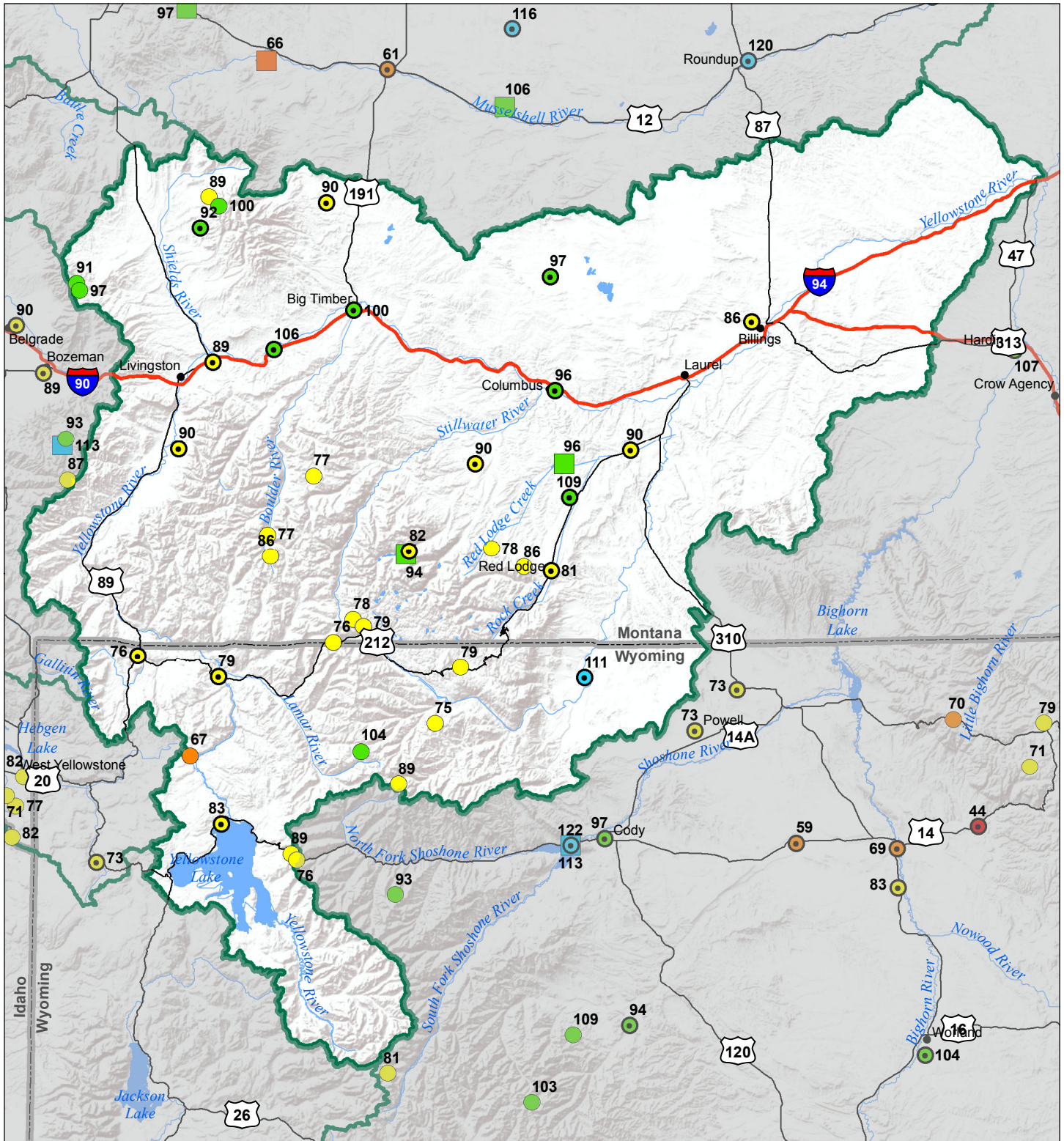
Reservoirs Percent of Normal

- > 150%
- 131 - 150%
- 111 - 130%
- 91 - 110%
- 71 - 90%
- 51 - 70%
- 1 - 50%



Montana State Library
Natural Resource
Information System

Upper Yellowstone River Basin Water Year to Date Precipitation and Reservoir Levels Percentage of Normal September 1, 2016



Precipitation Percent of Normal

SNOTEL		COOP/ACIS	
● > 150%	● 71 - 90%	● > 150%	● 71 - 90%
● 131 - 150%	● 51 - 70%	● 131 - 150%	● 51 - 70%
● 111 - 130%	● 1 - 50%	● 111 - 130%	● 1 - 50%
● 91 - 110%		● 91 - 110%	

Reservoirs Percent of Normal

■ > 150%
■ 131 - 150%
■ 111 - 130%
■ 91 - 110%
■ 71 - 90%
■ 51 - 70%
■ 1 - 50%

