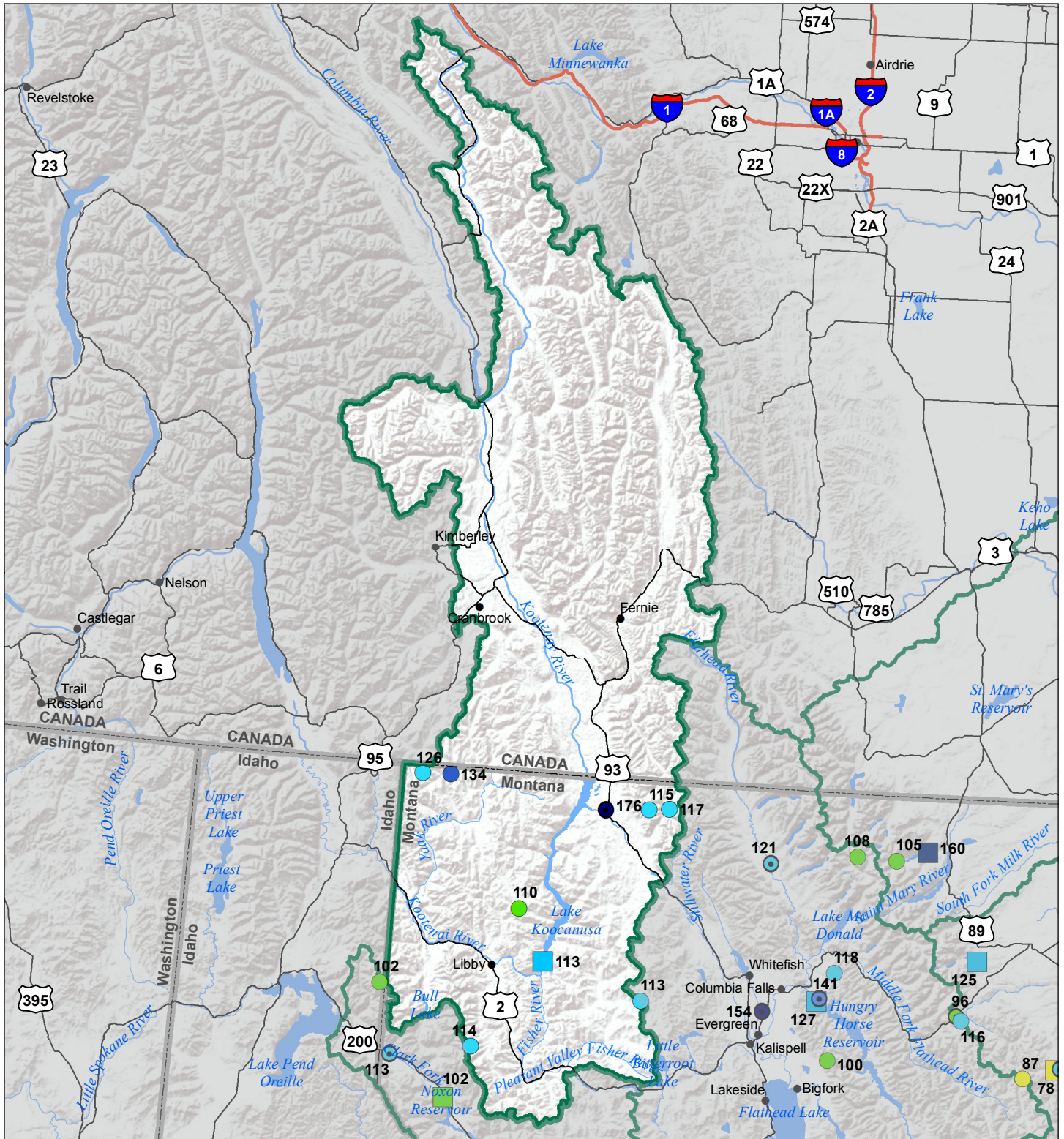


Kootenai River Basin Water Year to Date Precipitation and Reservoir Levels Percentage of Normal February 1, 2017

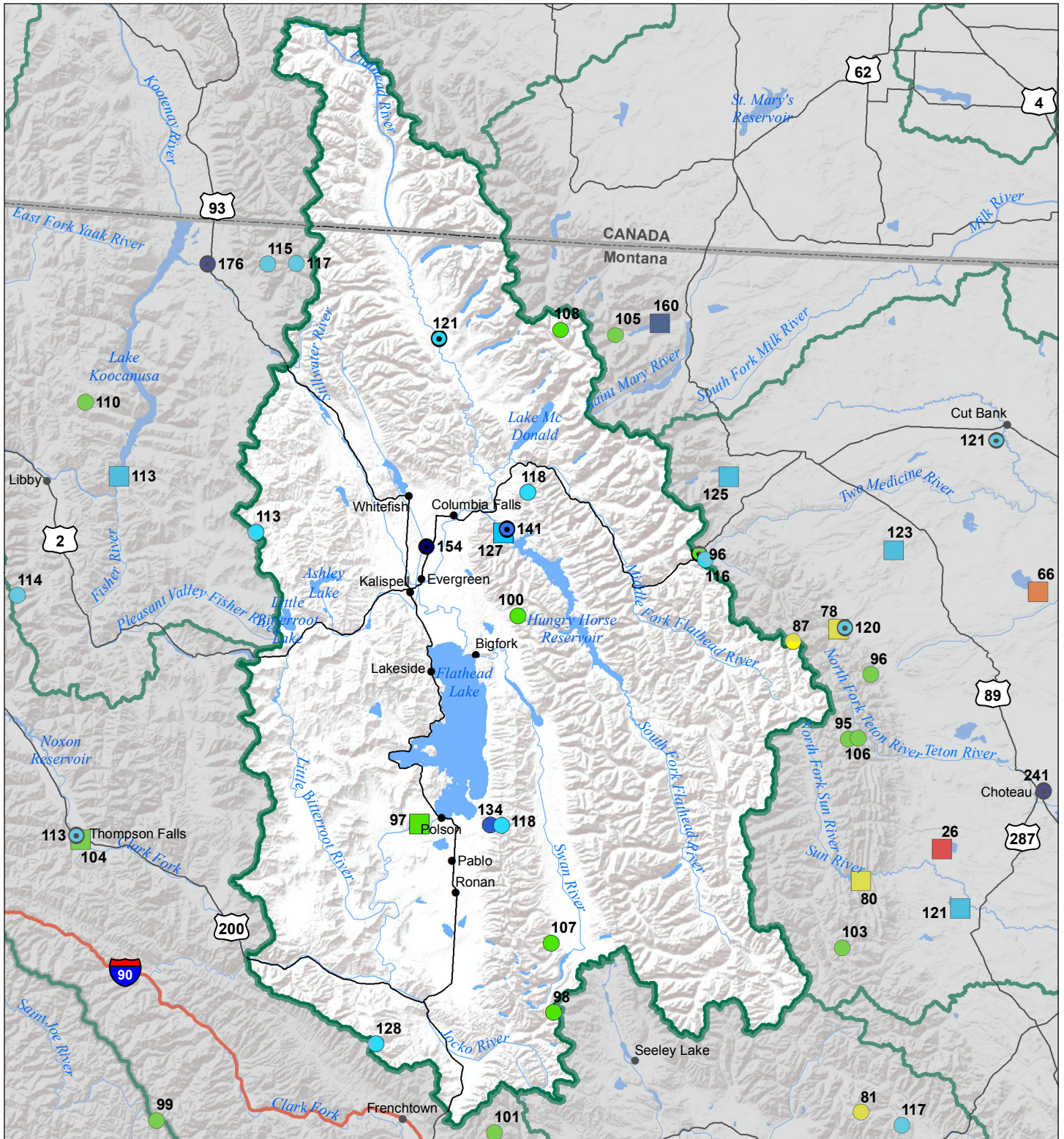


| Precipitation Percent of Normal | | COOP/ACIS | |
|------------------------------------|------------|--------------|------------|
| SNOTEL | | | |
| ● > 150% | ● 71 - 90% | ● > 150% | ● 71 - 90% |
| ● 131 - 150% | ● 51 - 70% | ● 131 - 150% | ● 51 - 70% |
| ● 111 - 130% | ● 1 - 50% | ● 111 - 130% | ● 1 - 50% |
| ● 91 - 110% | | ● 91 - 110% | |

| Reservoirs Percent of Normal |
|---------------------------------|
| ■ > 150% |
| ■ 131 - 150% |
| ■ 111 - 130% |
| ■ 91 - 110% |
| ■ 71 - 90% |
| ■ 51 - 70% |
| ■ 1 - 50% |



Flathead River Basin Water Year to Date Precipitation and Reservoir Levels Percentage of Normal February 1, 2017

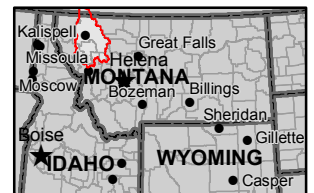


Precipitation Percent of Normal

| SNOTEL | | COOP/ACIS | |
|-----------------------------------------------------|------------------------------------------------|-----------------------------------------------------|------------------------------------------------|
| ● > 150% | ● 71 - 90% | ● > 150% | ● 71 - 90% |
| ● 131 - 150% | ● 51 - 70% | ● 131 - 150% | ● 51 - 70% |
| ● 111 - 130% | ● 1 - 50% | ● 111 - 130% | ● 1 - 50% |
| ● 91 - 110% | | ● 91 - 110% | |

Reservoirs Percent of Normal

| |
|-----------------------------------------------------|
| ■ > 150% |
| ■ 131 - 150% |
| ■ 111 - 130% |
| ■ 91 - 110% |
| ■ 71 - 90% |
| ■ 51 - 70% |
| ■ 1 - 50% |

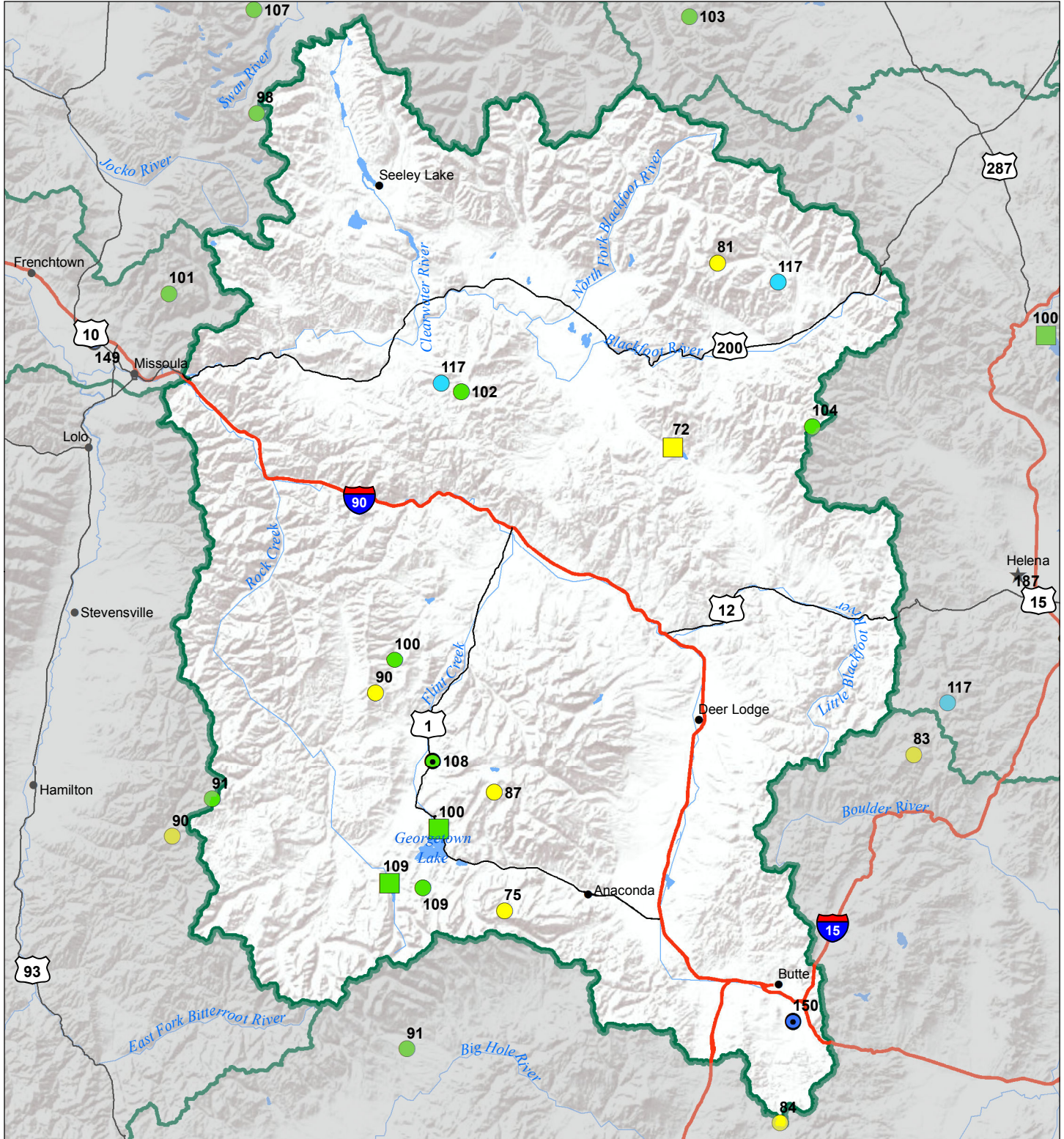


Upper Clark Fork River Basin

Water Year to Date Precipitation and Reservoir Levels

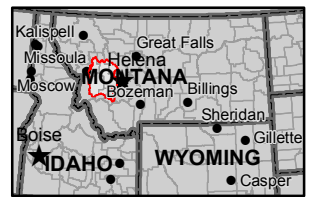
Percentage of Normal

February 1, 2017

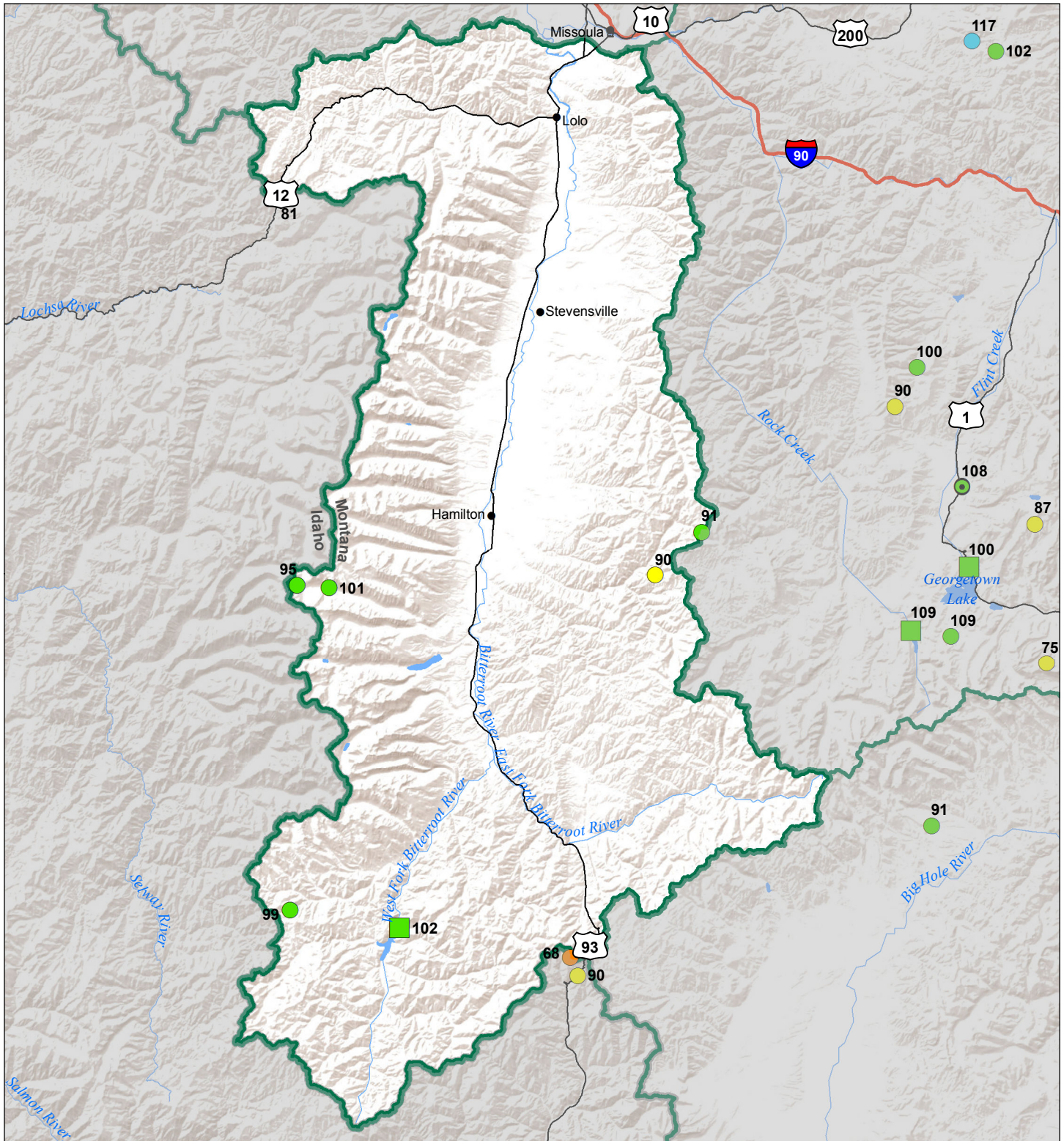


| Precipitation Percent of Normal | | COOP/ACIS | |
|------------------------------------|------------|--------------|------------|
| SNOTEL | | | |
| ● > 150% | ● 71 - 90% | ● > 150% | ● 71 - 90% |
| ● 131 - 150% | ● 51 - 70% | ● 131 - 150% | ● 51 - 70% |
| ● 111 - 130% | ● 1 - 50% | ● 111 - 130% | ● 1 - 50% |
| ● 91 - 110% | | ● 91 - 110% | |

| Reservoirs Percent of Normal |
|---------------------------------|
| ■ > 150% |
| ■ 131 - 150% |
| ■ 111 - 130% |
| ■ 91 - 110% |
| ■ 71 - 90% |
| ■ 51 - 70% |
| ■ 1 - 50% |

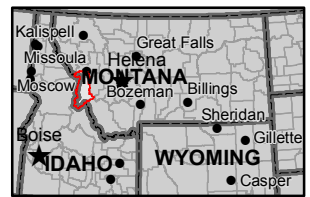


Bitterroot River Basin Water Year to Date Precipitation and Reservoir Levels Percentage of Normal February 1, 2017



| Precipitation Percent of Normal | |
|------------------------------------|--------------|
| SNOTEL | COOP/ACIS |
| ● > 150% | ● > 150% |
| ● 131 - 150% | ● 131 - 150% |
| ● 111 - 130% | ● 111 - 130% |
| ● 91 - 110% | ● 91 - 110% |
| ● 71 - 90% | ● 71 - 90% |
| ● 51 - 70% | ● 51 - 70% |
| ● 1 - 50% | ● 1 - 50% |

| Reservoirs Percent of Normal |
|---------------------------------|
| ■ > 150% |
| ■ 131 - 150% |
| ■ 111 - 130% |
| ■ 91 - 110% |
| ■ 71 - 90% |
| ■ 51 - 70% |
| ■ 1 - 50% |

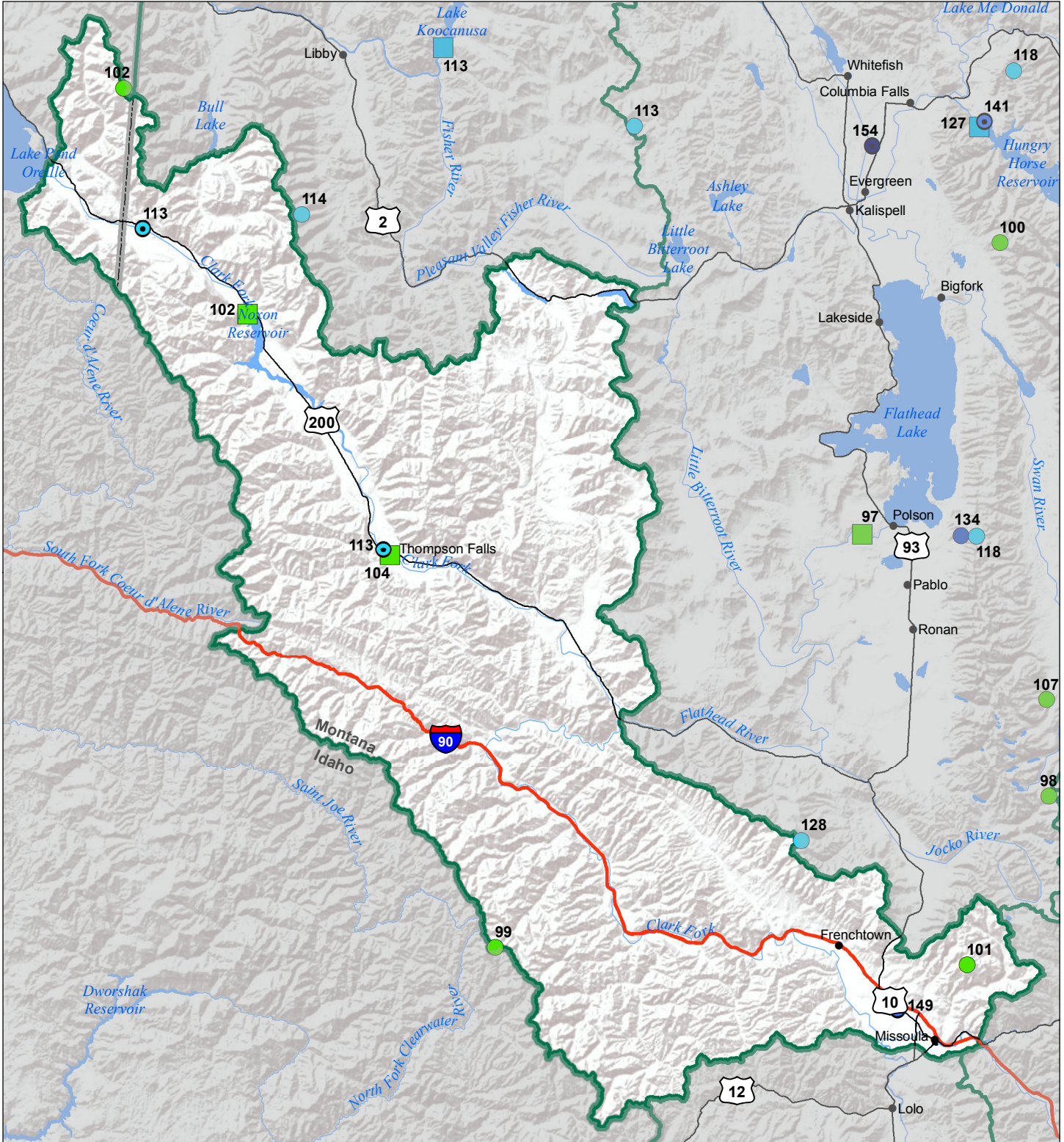


Lower Clark Fork River Basin

Water Year to Date Precipitation and Reservoir Levels

Percentage of Normal

February 1, 2017

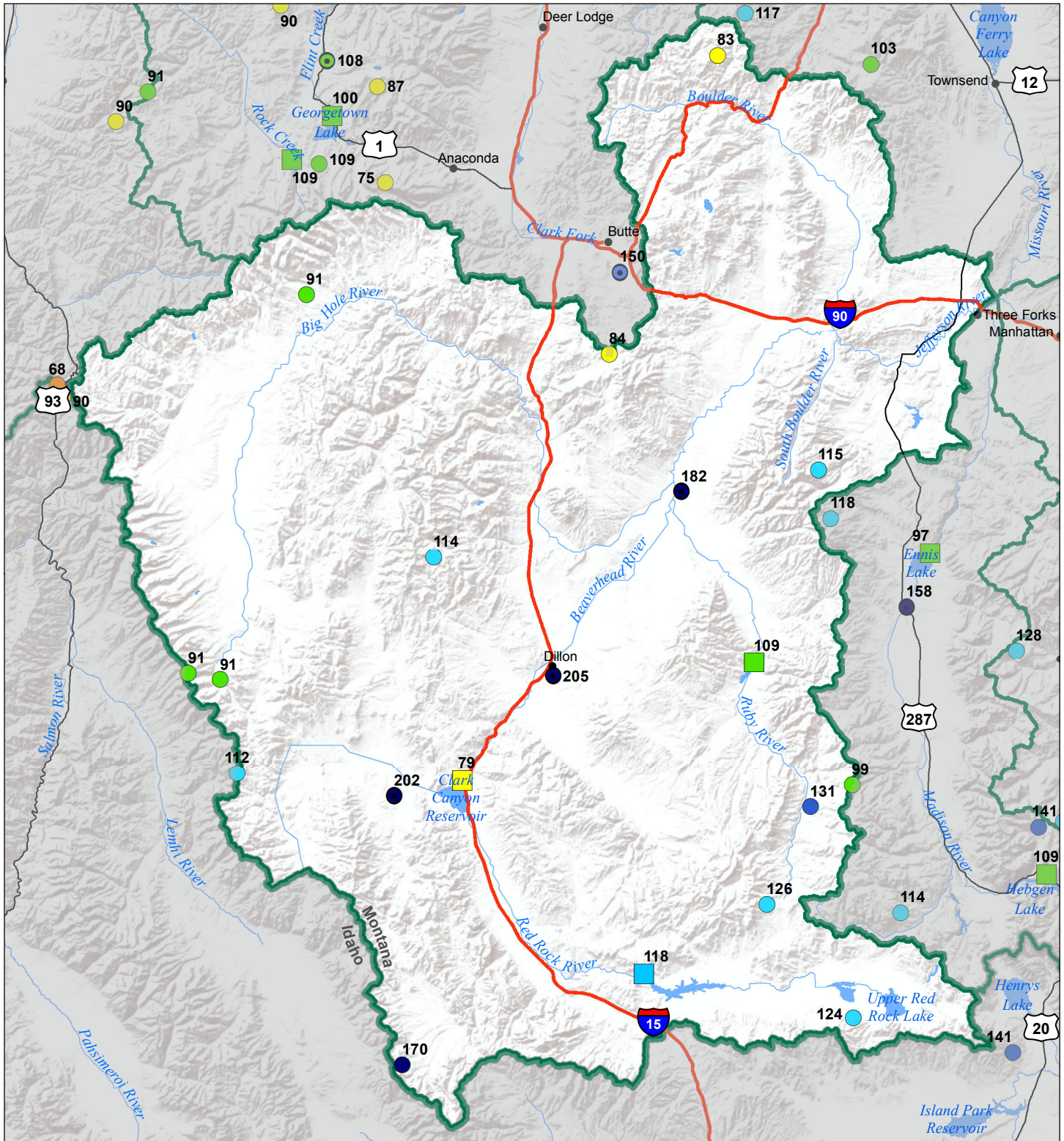


| Precipitation Percent of Normal | | | |
|------------------------------------|------------|--------------|------------|
| SNOTEL | | COOP/ACIS | |
| ● > 150% | ● 71 - 90% | ● > 150% | ● 71 - 90% |
| ● 131 - 150% | ● 51 - 70% | ● 131 - 150% | ● 51 - 70% |
| ● 111 - 130% | ● 1 - 50% | ● 111 - 130% | ● 1 - 50% |
| ● 91 - 110% | | ● 91 - 110% | |

| Reservoirs Percent of Normal |
|---------------------------------|
| ■ > 150% |
| ■ 131 - 150% |
| ■ 111 - 130% |
| ■ 91 - 110% |
| ■ 71 - 90% |
| ■ 51 - 70% |
| ■ 1 - 50% |

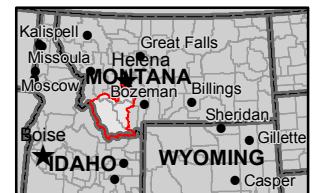


Jefferson River Basin Water Year to Date Precipitation and Reservoir Levels Percentage of Normal February 1, 2017

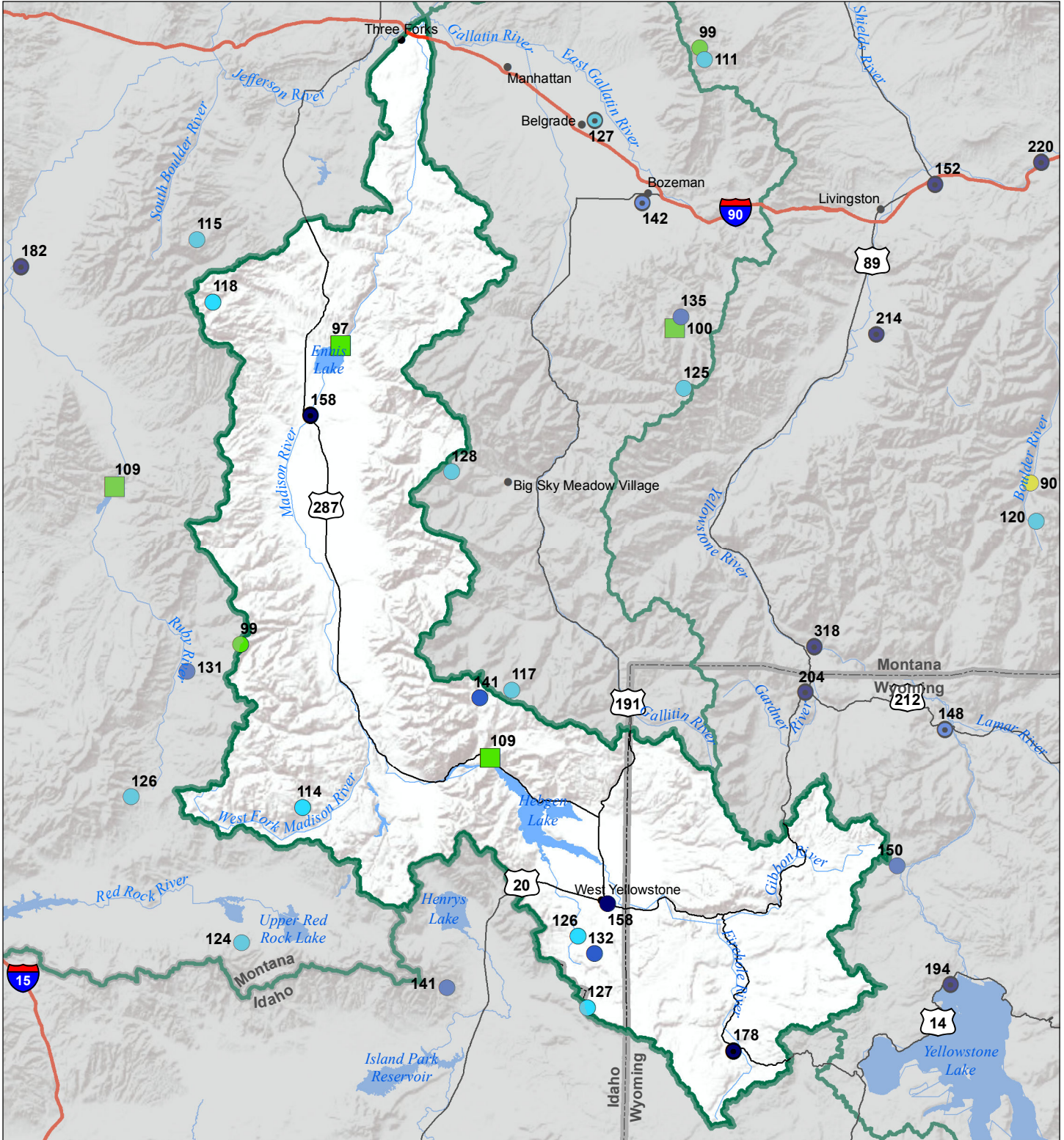


| Precipitation Percent of Normal | | | |
|------------------------------------|------------|--------------|------------|
| SNOTEL | | COOP/ACIS | |
| ● > 150% | ● 71 - 90% | ● > 150% | ● 71 - 90% |
| ● 131 - 150% | ● 51 - 70% | ● 131 - 150% | ● 51 - 70% |
| ● 111 - 130% | ● 1 - 50% | ● 111 - 130% | ● 1 - 50% |
| ● 91 - 110% | | ● 91 - 110% | |

| Reservoirs Percent of Normal |
|---------------------------------|
| ■ > 150% |
| ■ 131 - 150% |
| ■ 111 - 130% |
| ■ 91 - 110% |
| ■ 71 - 90% |
| ■ 51 - 70% |
| ■ 1 - 50% |

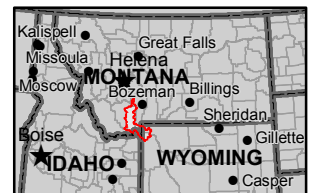


Madison River Basin Water Year to Date Precipitation and Reservoir Levels Percentage of Normal February 1, 2017

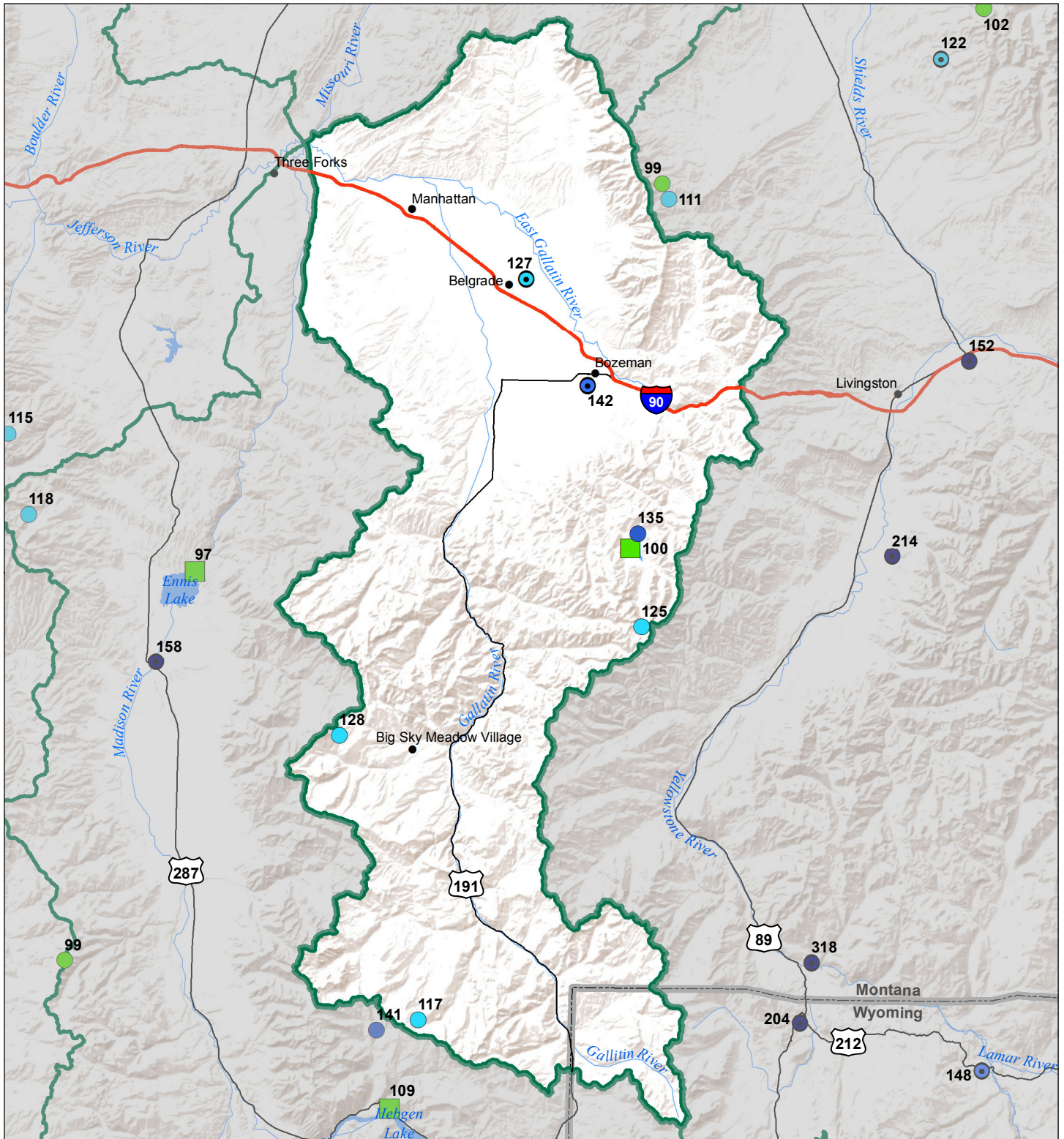


| Precipitation Percent of Normal | | | |
|------------------------------------|------------|--------------|------------|
| SNOTEL | | COOP/ACIS | |
| ● > 150% | ● 71 - 90% | ● > 150% | ● 71 - 90% |
| ● 131 - 150% | ● 51 - 70% | ● 131 - 150% | ● 51 - 70% |
| ● 111 - 130% | ● 1 - 50% | ● 111 - 130% | ● 1 - 50% |
| ● 91 - 110% | | ● 91 - 110% | |

| Reservoirs Percent of Normal |
|---------------------------------|
| ■ > 150% |
| ■ 131 - 150% |
| ■ 111 - 130% |
| ■ 91 - 110% |
| ■ 71 - 90% |
| ■ 51 - 70% |
| ■ 1 - 50% |



Gallatin River Basin Water Year to Date Precipitation and Reservoir Levels Percentage of Normal February 1, 2017

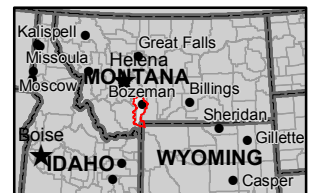


Precipitation Percent of Normal

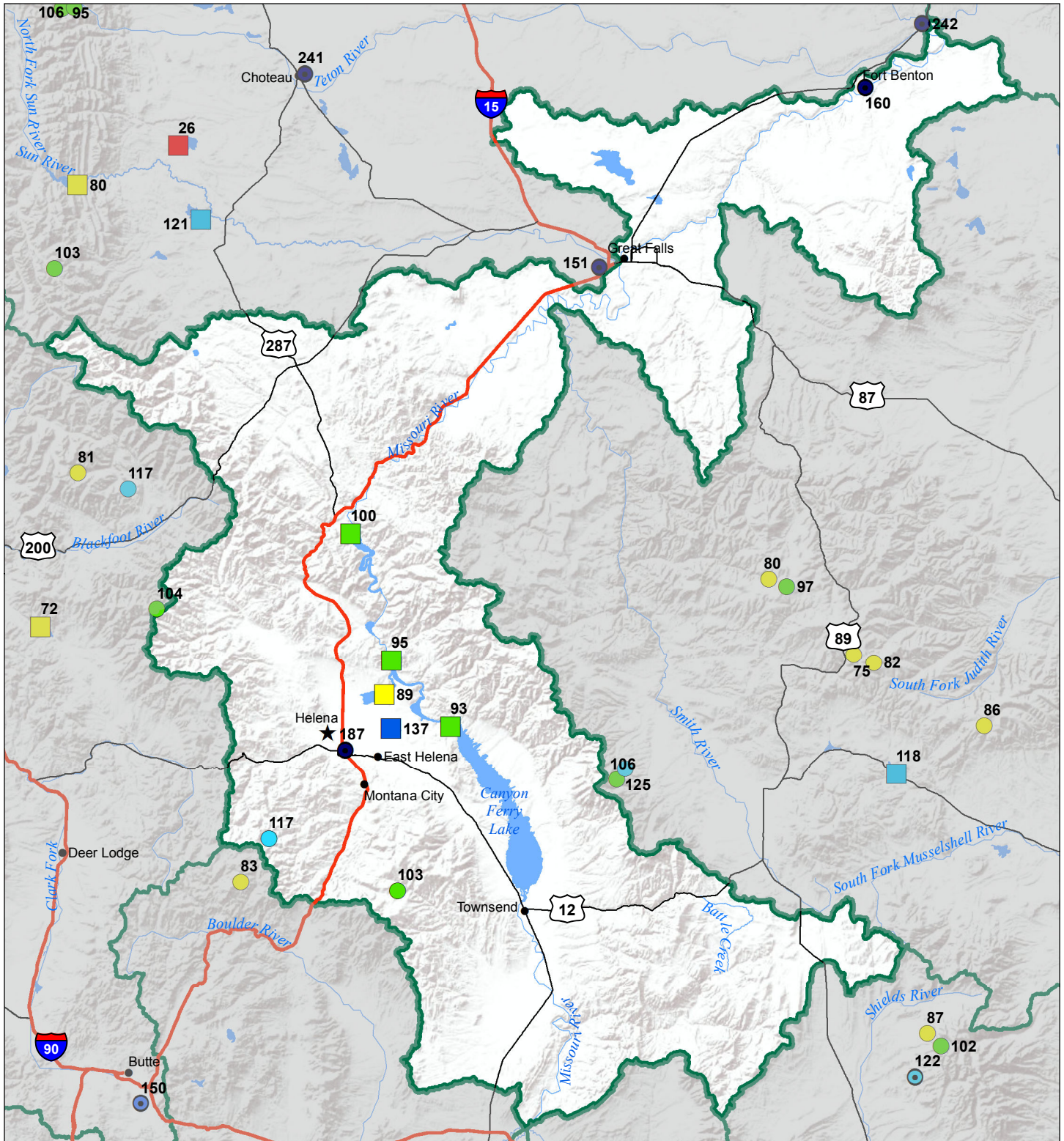
| SNOTEL | | COOP/ACIS | |
|--------------|------------|--------------|------------|
| ● > 150% | ● 71 - 90% | ● > 150% | ● 71 - 90% |
| ● 131 - 150% | ● 51 - 70% | ● 131 - 150% | ● 51 - 70% |
| ● 111 - 130% | ● 1 - 50% | ● 111 - 130% | ● 1 - 50% |
| ● 91 - 110% | | ● 91 - 110% | |

Reservoirs Percent of Normal

| |
|--------------|
| ■ > 150% |
| ■ 131 - 150% |
| ■ 111 - 130% |
| ■ 91 - 110% |
| ■ 71 - 90% |
| ■ 51 - 70% |
| ■ 1 - 50% |



Headwaters Mainstem (Missouri) River Basin Water Year to Date Precipitation and Reservoir Levels Percentage of Normal February 1, 2017

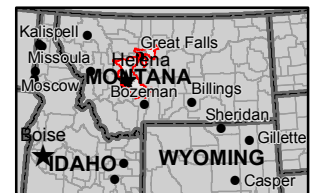


Precipitation Percent of Normal

| SNOTEL | | COOP/ACIS | |
|--------------|------------|--------------|------------|
| ● > 150% | ● 71 - 90% | ● > 150% | ● 71 - 90% |
| ● 131 - 150% | ● 51 - 70% | ● 131 - 150% | ● 51 - 70% |
| ● 111 - 130% | ● 1 - 50% | ● 111 - 130% | ● 1 - 50% |
| ● 91 - 110% | | ● 91 - 110% | |

Reservoirs Percent of Normal

| |
|--------------|
| ■ > 150% |
| ■ 131 - 150% |
| ■ 111 - 130% |
| ■ 91 - 110% |
| ■ 71 - 90% |
| ■ 51 - 70% |
| ■ 1 - 50% |

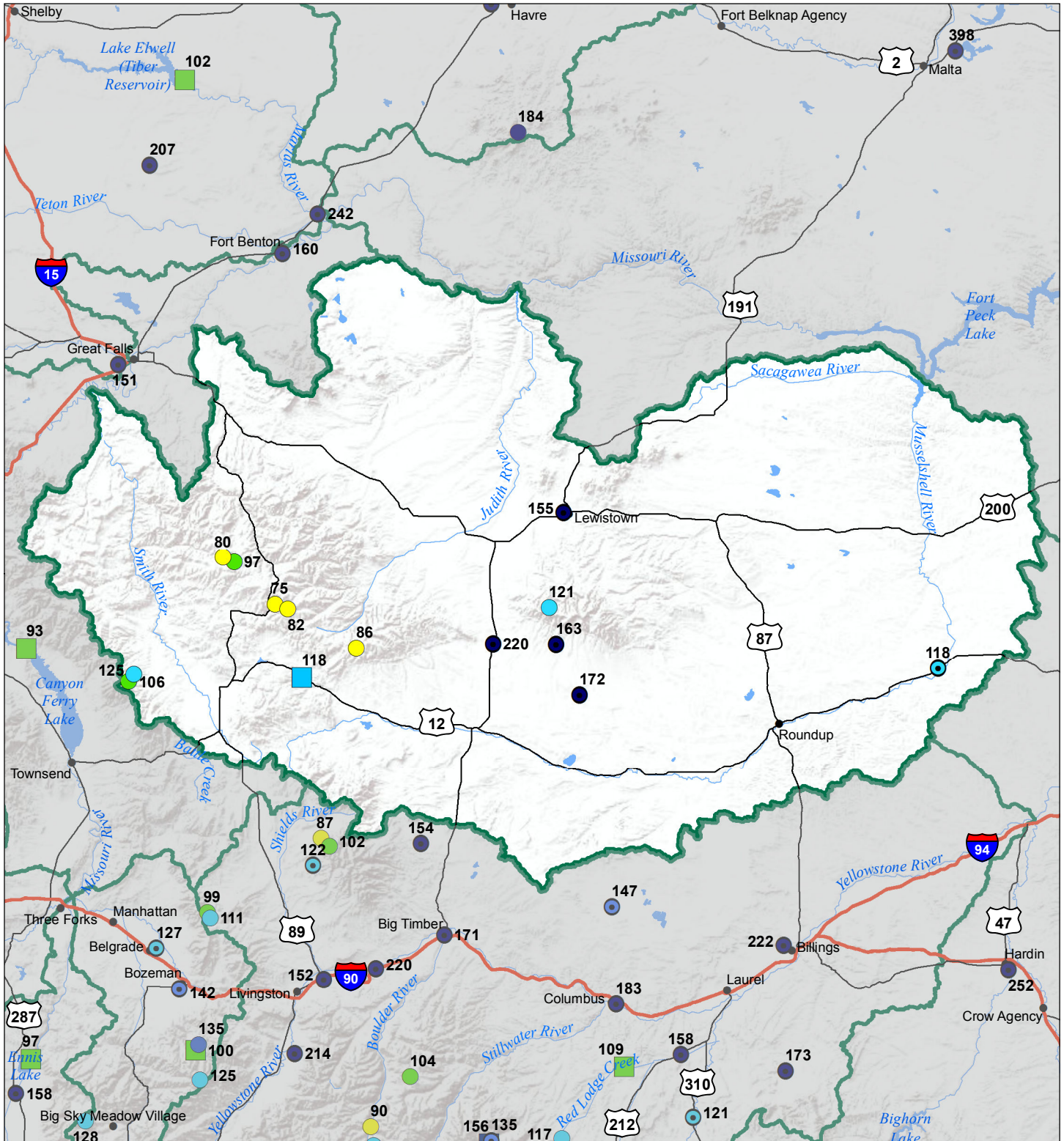


Smith-Judith-Musselshell River Basin

Water Year to Date Precipitation and Reservoir Levels

Percentage of Normal

February 1, 2017



Precipitation Percent of Normal

SNOTEL

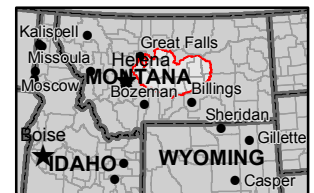
- > 150%
- 131 - 150%
- 111 - 130%
- 91 - 110%
- 71 - 90%
- 51 - 70%
- 1 - 50%

COOP/ACIS

- > 150%
- 131 - 150%
- 111 - 130%
- 91 - 110%
- 71 - 90%
- 51 - 70%
- 1 - 50%

Reservoirs Percent of Normal

- > 150%
- 131 - 150%
- 111 - 130%
- 91 - 110%
- 71 - 90%
- 51 - 70%
- 1 - 50%

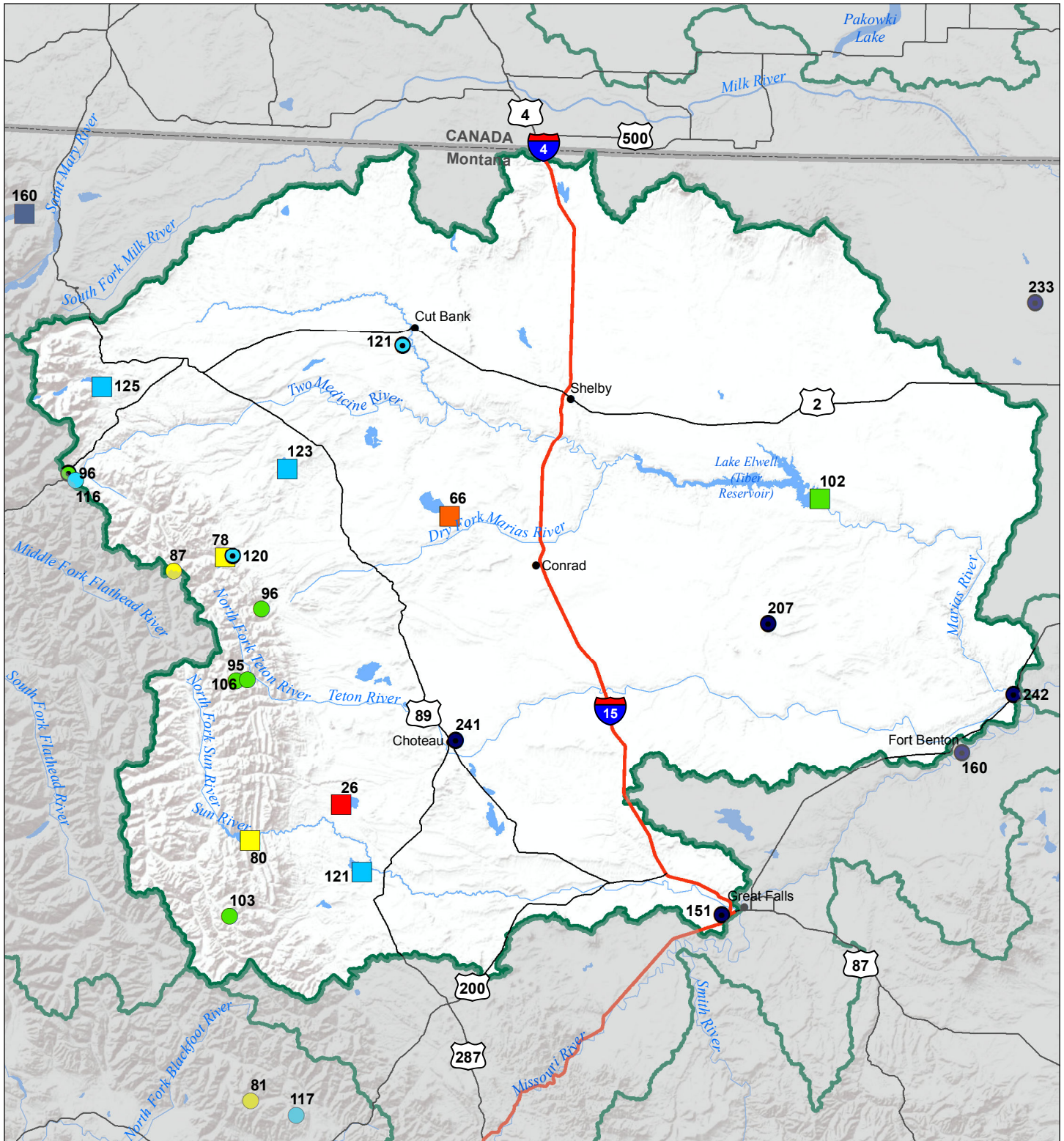


Sun-Teton-Marias River Basin

Water Year to Date Precipitation and Reservoir Levels

Percentage of Normal

February 1, 2017



Precipitation Percent of Normal

SNOTEL

- > 150%
- 131 - 150%
- 111 - 130%
- 91 - 110%
- 71 - 90%
- 51 - 70%
- 1 - 50%

COOP/ACIS

- > 150%
- 131 - 150%
- 111 - 130%
- 91 - 110%
- 71 - 90%
- 51 - 70%
- 1 - 50%

Reservoirs Percent of Normal

- > 150%
- 131 - 150%
- 111 - 130%
- 91 - 110%
- 71 - 90%
- 51 - 70%
- 1 - 50%

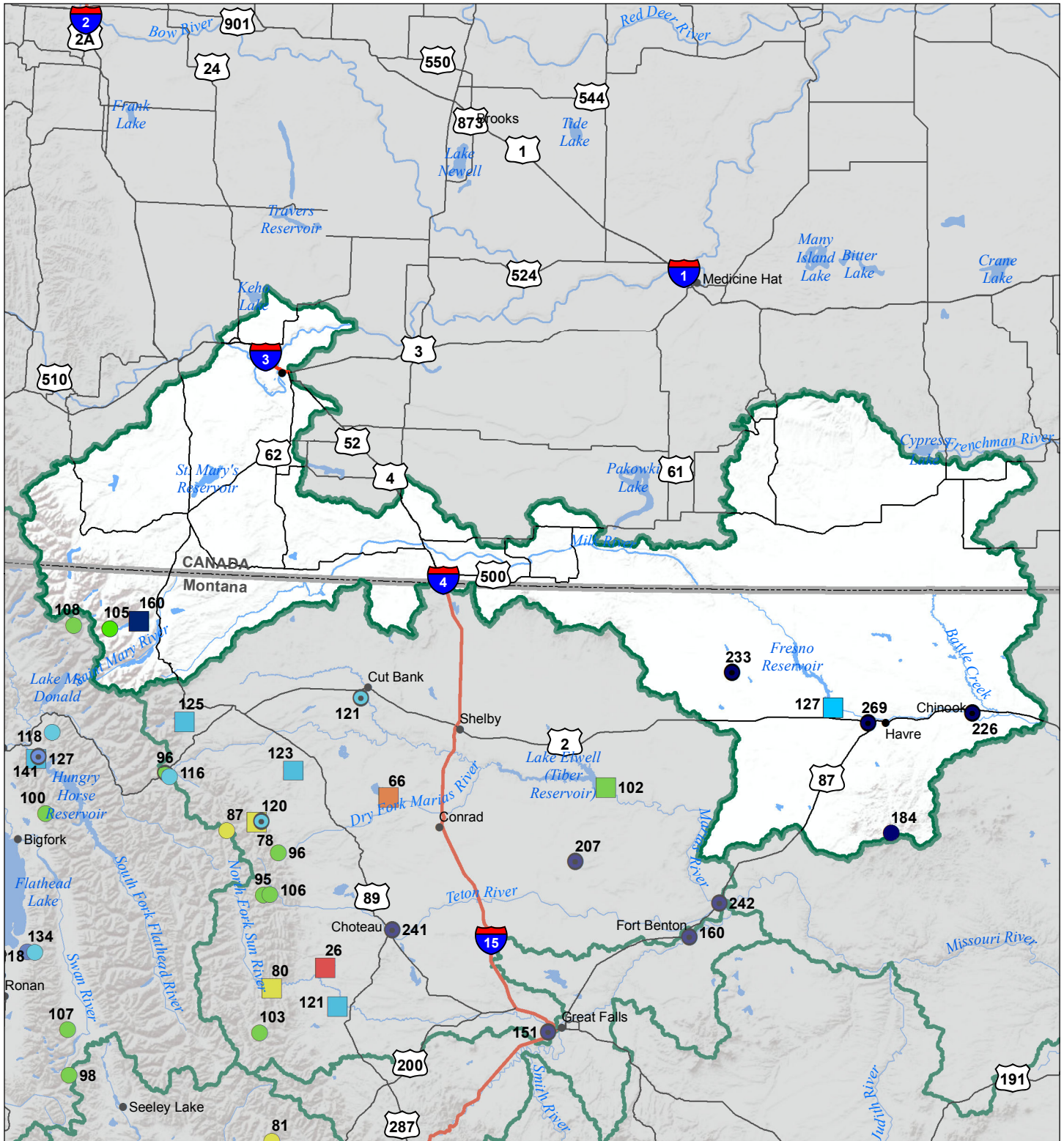


St Mary's-Milk River Basin

Water Year to Date Precipitation and Reservoir Levels

Percentage of Normal

February 1, 2017



Precipitation Percent of Normal

SNOTEL

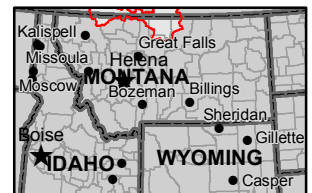
- > 150%
- 131 - 150%
- 111 - 130%
- 91 - 110%
- 71 - 90%
- 51 - 70%
- 1 - 50%

COOP/ACIS

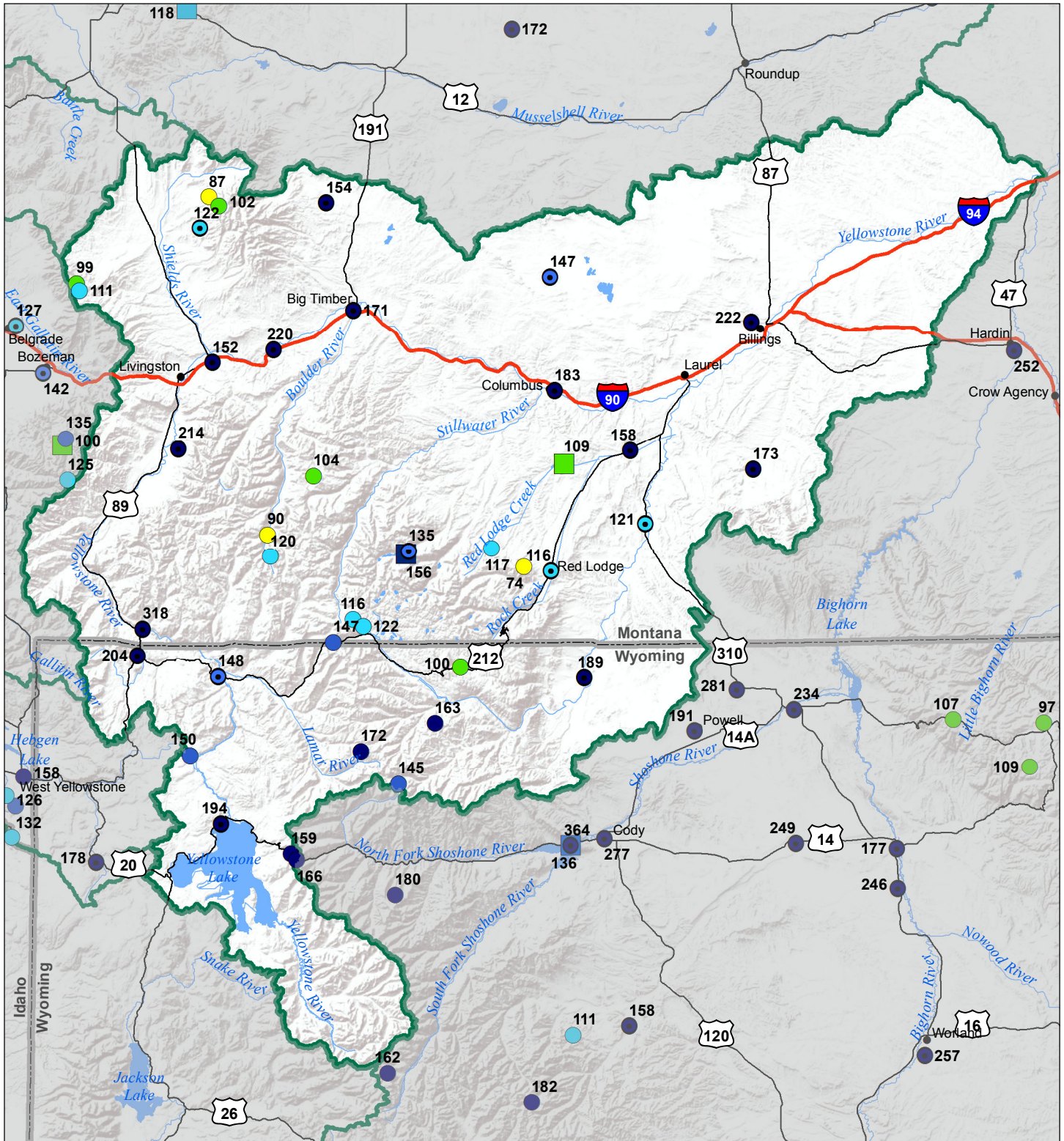
- > 150%
- 131 - 150%
- 111 - 130%
- 91 - 110%
- 71 - 90%
- 51 - 70%
- 1 - 50%

Reservoirs Percent of Normal

- > 150%
- 131 - 150%
- 111 - 130%
- 91 - 110%
- 71 - 90%
- 51 - 70%
- 1 - 50%



Upper Yellowstone River Basin Water Year to Date Precipitation and Reservoir Levels Percentage of Normal February 1, 2017



Precipitation Percent of Normal

SNOTEL

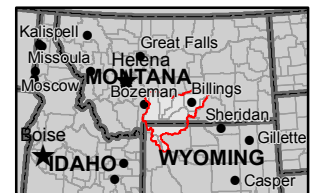
- > 150%
- 131 - 150%
- 111 - 130%
- 91 - 110%
- 71 - 90%
- 51 - 70%
- 1 - 50%

COOP/ACIS

- > 150%
- 131 - 150%
- 111 - 130%
- 91 - 110%
- 71 - 90%
- 51 - 70%
- 1 - 50%

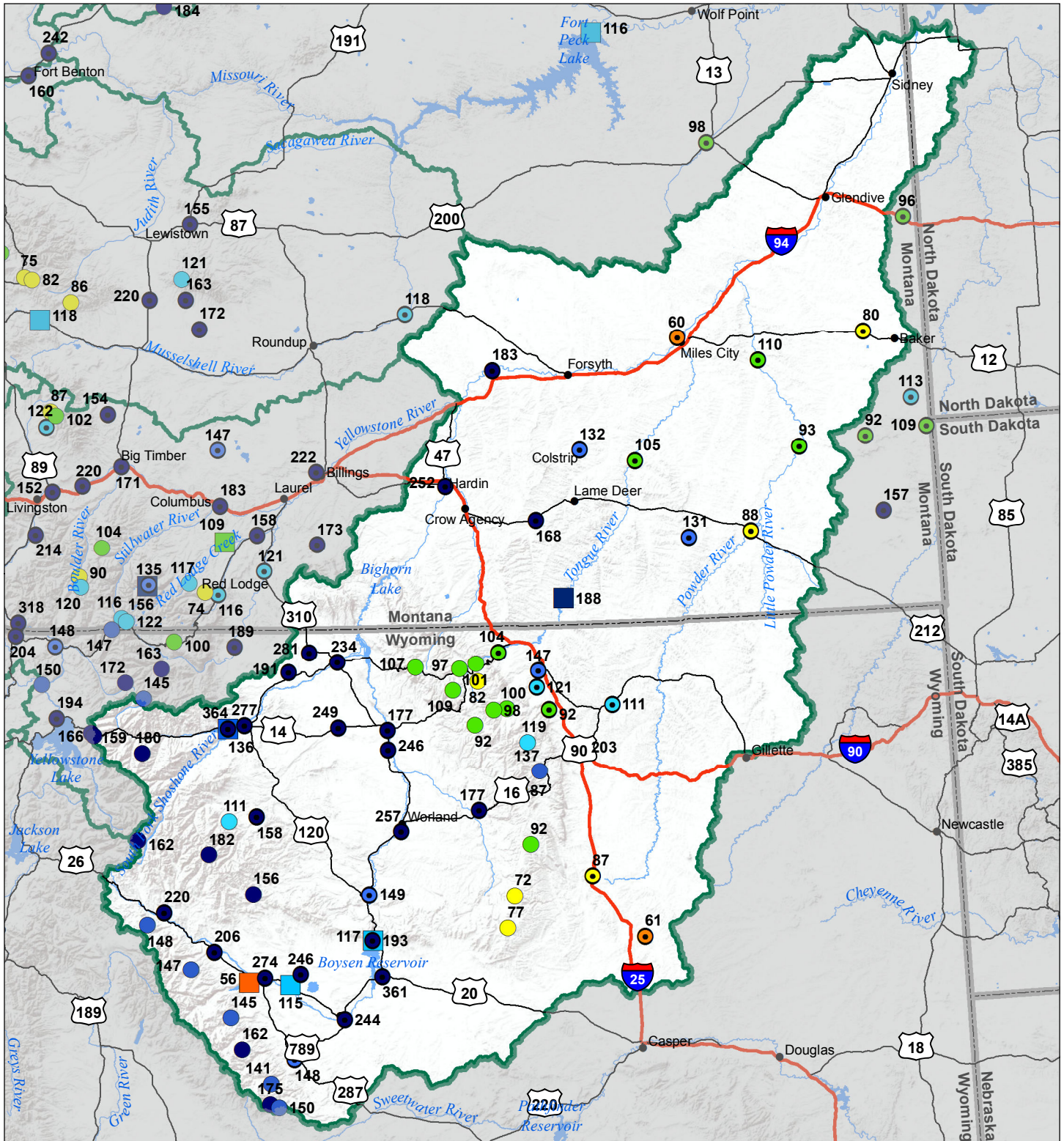
Reservoirs Percent of Normal

- > 150%
- 131 - 150%
- 111 - 130%
- 91 - 110%
- 71 - 90%
- 51 - 70%
- 1 - 50%



Montana State Library
Natural Resource
Information System

Lower Yellowstone River Basin Water Year to Date Precipitation and Reservoir Levels Percentage of Normal February 1, 2017



| Precipitation Percent of Normal | | | |
|------------------------------------|------------|--------------|------------|
| SNOTEL | | COOP/ACIS | |
| ● > 150% | ● 71 - 90% | ● > 150% | ● 71 - 90% |
| ● 131 - 150% | ● 51 - 70% | ● 131 - 150% | ● 51 - 70% |
| ● 111 - 130% | ● 1 - 50% | ● 111 - 130% | ● 1 - 50% |
| ● 91 - 110% | | ● 91 - 110% | |

| Reservoirs Percent of Normal |
|---------------------------------|
| ■ > 150% |
| ■ 131 - 150% |
| ■ 111 - 130% |
| ■ 91 - 110% |
| ■ 71 - 90% |
| ■ 51 - 70% |
| ■ 1 - 50% |

