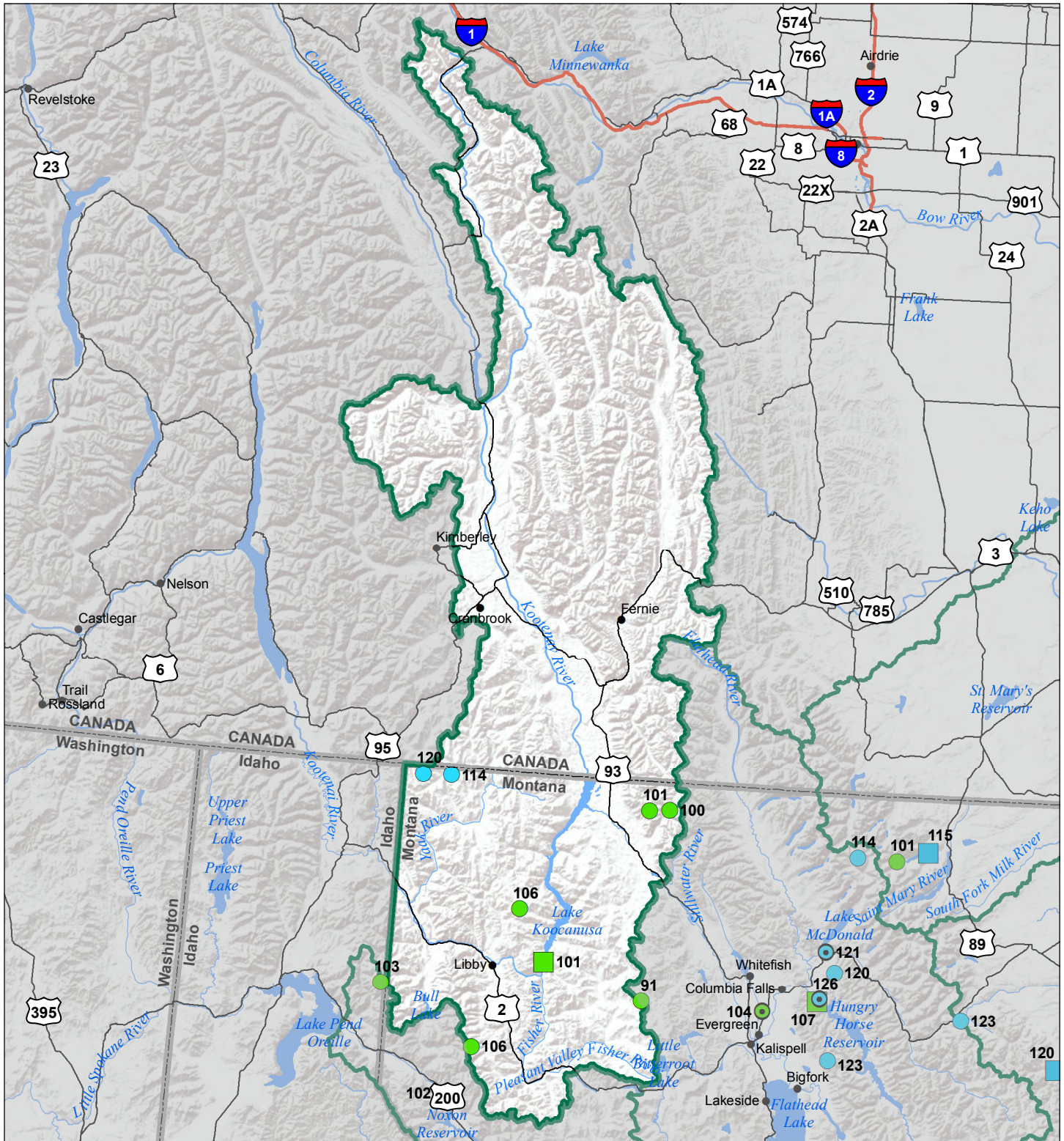


# Kootenai River Basin

## Water Year to Date Precipitation and Reservoir Levels

### Percentage of Normal

July 1, 2018



### Precipitation Percent of Normal

SNOTEL		COOP/ACIS	
<span style="color: blue;">●</span> > 150%	<span style="color: yellow;">●</span> 71 - 90%	<span style="color: blue;">●</span> > 150%	<span style="color: yellow;">●</span> 71 - 90%
<span style="color: blue;">●</span> 131 - 150%	<span style="color: orange;">●</span> 51 - 70%	<span style="color: blue;">●</span> 131 - 150%	<span style="color: orange;">●</span> 51 - 70%
<span style="color: cyan;">●</span> 111 - 130%	<span style="color: red;">●</span> 1 - 50%	<span style="color: cyan;">●</span> 111 - 130%	<span style="color: red;">●</span> 1 - 50%
<span style="color: green;">●</span> 91 - 110%		<span style="color: green;">●</span> 91 - 110%	

### Reservoirs Percent of Normal

<span style="color: darkblue;">■</span> > 150%
<span style="color: blue;">■</span> 131 - 150%
<span style="color: cyan;">■</span> 111 - 130%
<span style="color: green;">■</span> 91 - 110%
<span style="color: yellow;">■</span> 71 - 90%
<span style="color: orange;">■</span> 51 - 70%
<span style="color: red;">■</span> 1 - 50%

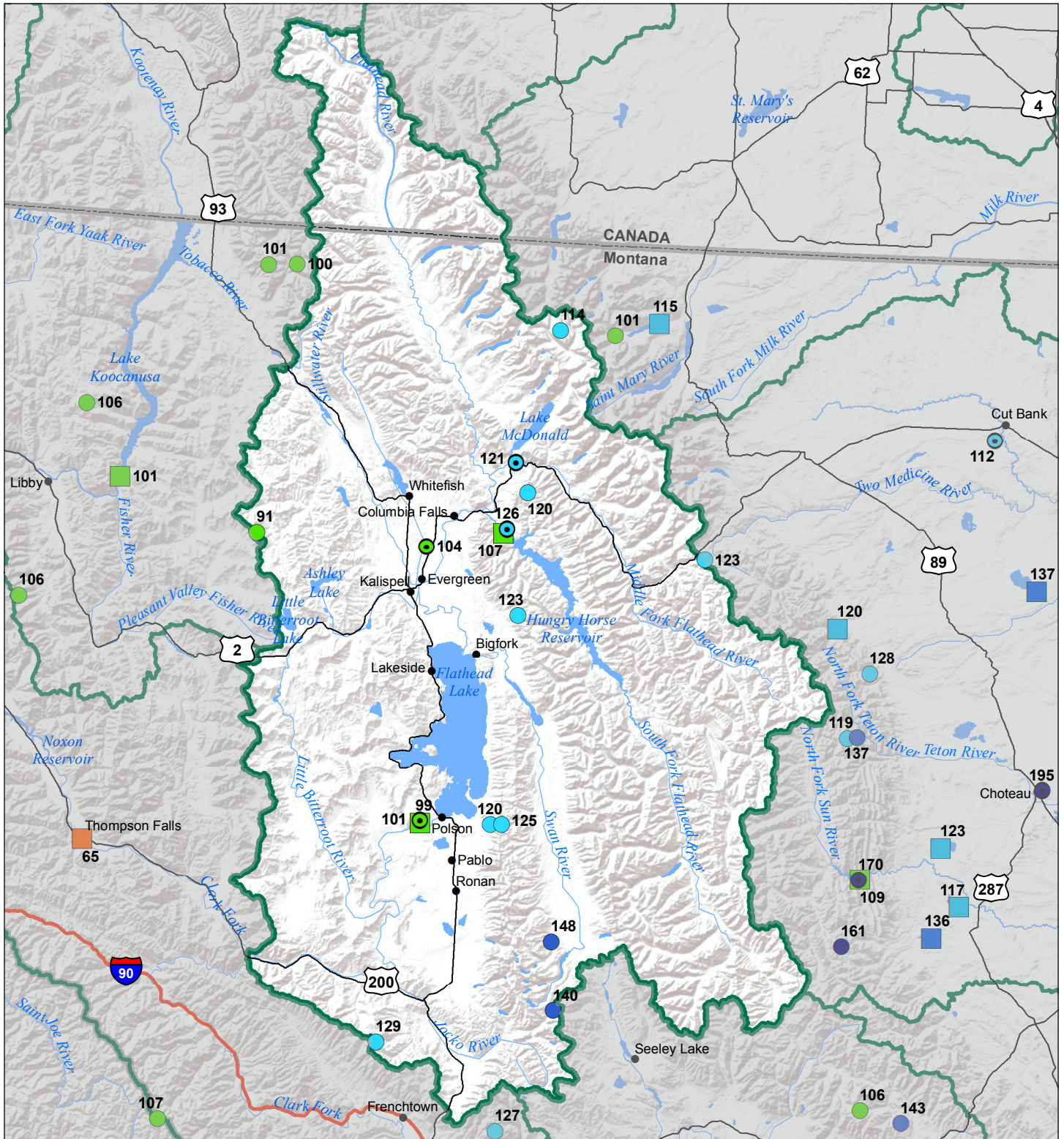


# Flathead River Basin

## Water Year to Date Precipitation and Reservoir Levels

### Percentage of Normal

July 1, 2018

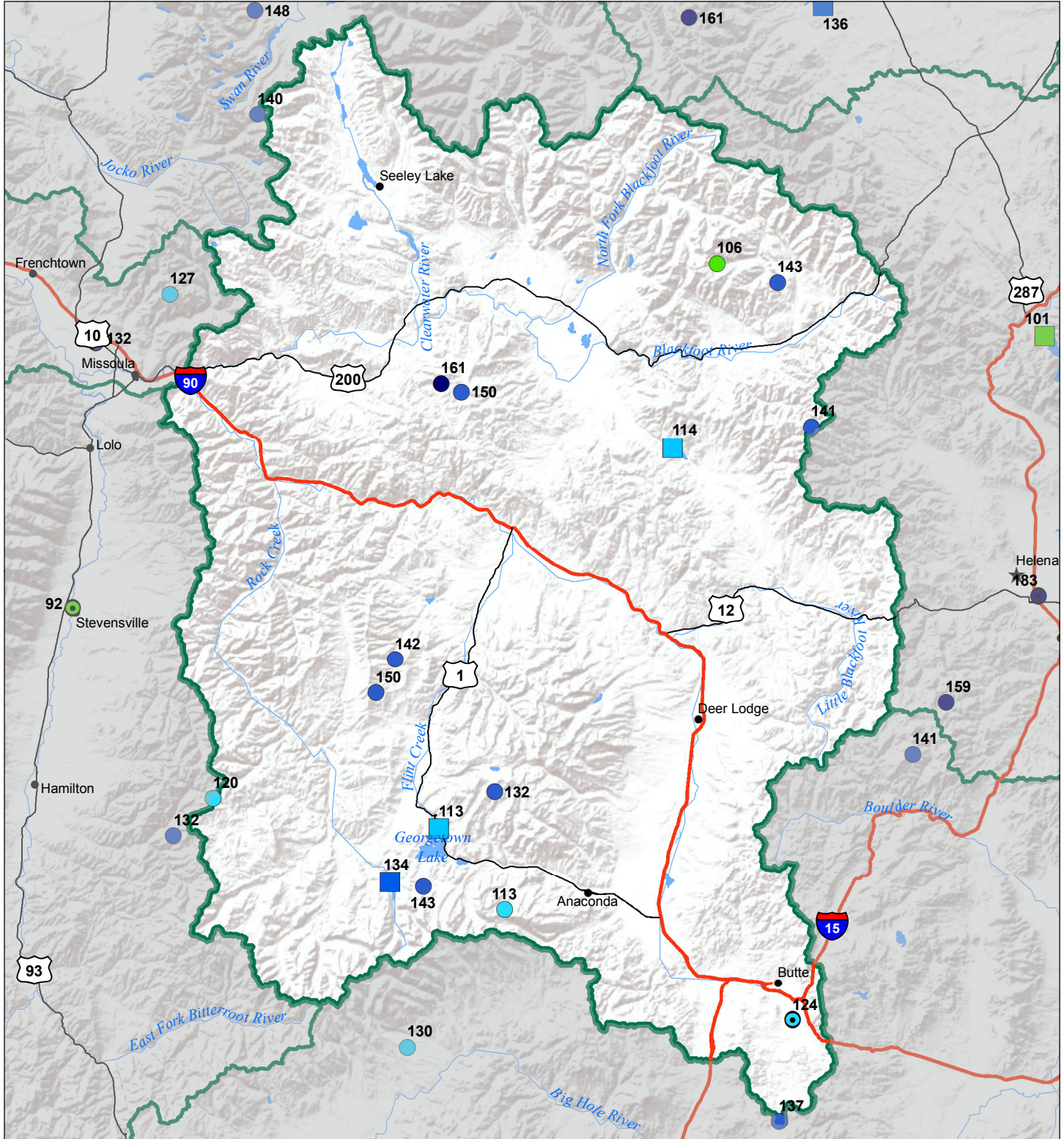


Precipitation Percent of Normal			
SNOTEL		COOP/ACIS	
<span style="color: blue;">●</span> > 150%	<span style="color: yellow;">●</span> 71 - 90%	<span style="color: blue;">●</span> > 150%	<span style="color: yellow;">●</span> 71 - 90%
<span style="color: lightblue;">●</span> 131 - 150%	<span style="color: orange;">●</span> 51 - 70%	<span style="color: lightblue;">●</span> 131 - 150%	<span style="color: orange;">●</span> 51 - 70%
<span style="color: cyan;">●</span> 111 - 130%	<span style="color: red;">●</span> 1 - 50%	<span style="color: cyan;">●</span> 111 - 130%	<span style="color: red;">●</span> 1 - 50%
<span style="color: green;">●</span> 91 - 110%		<span style="color: green;">●</span> 91 - 110%	

Reservoirs Percent of Normal
<span style="color: darkblue;">■</span> > 150%
<span style="color: blue;">■</span> 131 - 150%
<span style="color: lightblue;">■</span> 111 - 130%
<span style="color: green;">■</span> 91 - 110%
<span style="color: yellow;">■</span> 71 - 90%
<span style="color: orange;">■</span> 51 - 70%
<span style="color: red;">■</span> 1 - 50%



# Upper Clark Fork River Basin Water Year to Date Precipitation and Reservoir Levels Percentage of Normal July 1, 2018

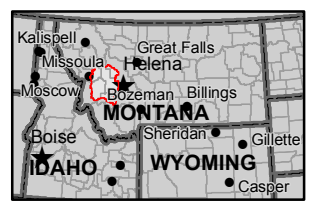


### Precipitation Percent of Normal

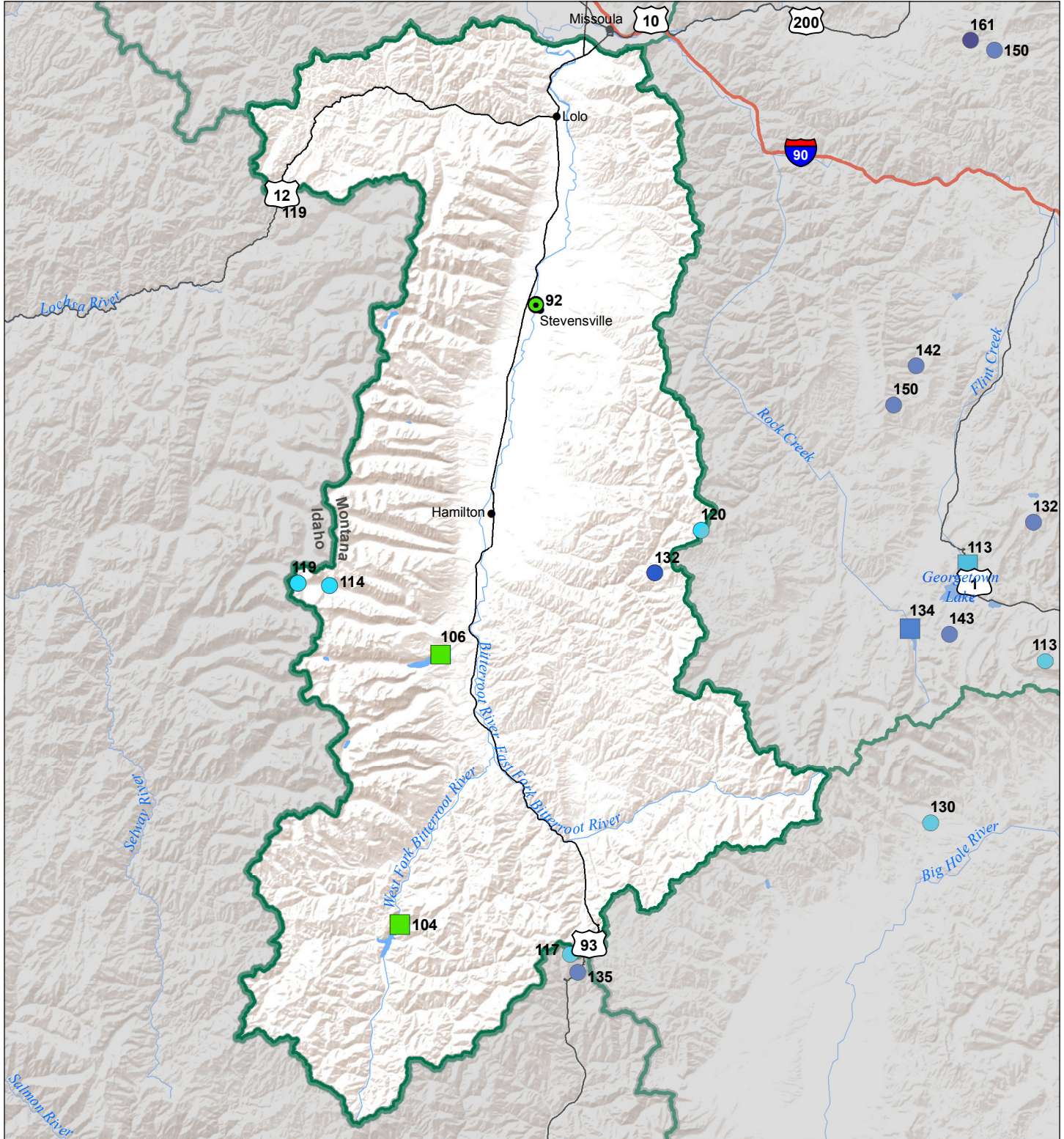
SNOTEL		COOP/ACIS	
<span style="color: blue;">●</span> > 150%	<span style="color: yellow;">●</span> 71 - 90%	<span style="color: blue;">●</span> > 150%	<span style="color: yellow;">●</span> 71 - 90%
<span style="color: blue;">●</span> 131 - 150%	<span style="color: orange;">●</span> 51 - 70%	<span style="color: blue;">●</span> 131 - 150%	<span style="color: orange;">●</span> 51 - 70%
<span style="color: cyan;">●</span> 111 - 130%	<span style="color: red;">●</span> 1 - 50%	<span style="color: cyan;">●</span> 111 - 130%	<span style="color: red;">●</span> 1 - 50%
<span style="color: green;">●</span> 91 - 110%		<span style="color: green;">●</span> 91 - 110%	

### Reservoirs Percent of Normal

<span style="color: darkblue;">■</span> > 150%
<span style="color: blue;">■</span> 131 - 150%
<span style="color: cyan;">■</span> 111 - 130%
<span style="color: green;">■</span> 91 - 110%
<span style="color: yellow;">■</span> 71 - 90%
<span style="color: orange;">■</span> 51 - 70%
<span style="color: red;">■</span> 1 - 50%



# Bitterroot River Basin Water Year to Date Precipitation and Reservoir Levels Percentage of Normal July 1, 2018

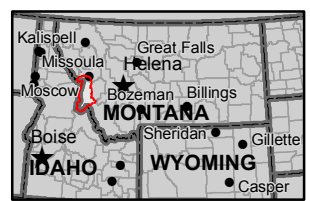


### Precipitation Percent of Normal

SNOTEL		COOP/ACIS	
<span style="color: blue;">●</span> > 150%	<span style="color: yellow;">●</span> 71 - 90%	<span style="color: blue;">●</span> > 150%	<span style="color: yellow;">●</span> 71 - 90%
<span style="color: blue;">●</span> 131 - 150%	<span style="color: orange;">●</span> 51 - 70%	<span style="color: blue;">●</span> 131 - 150%	<span style="color: orange;">●</span> 51 - 70%
<span style="color: cyan;">●</span> 111 - 130%	<span style="color: red;">●</span> 1 - 50%	<span style="color: cyan;">●</span> 111 - 130%	<span style="color: red;">●</span> 1 - 50%
<span style="color: green;">●</span> 91 - 110%		<span style="color: green;">●</span> 91 - 110%	

### Reservoirs Percent of Normal

<span style="color: darkblue;">■</span> > 150%
<span style="color: blue;">■</span> 131 - 150%
<span style="color: cyan;">■</span> 111 - 130%
<span style="color: green;">■</span> 91 - 110%
<span style="color: yellow;">■</span> 71 - 90%
<span style="color: orange;">■</span> 51 - 70%
<span style="color: red;">■</span> 1 - 50%

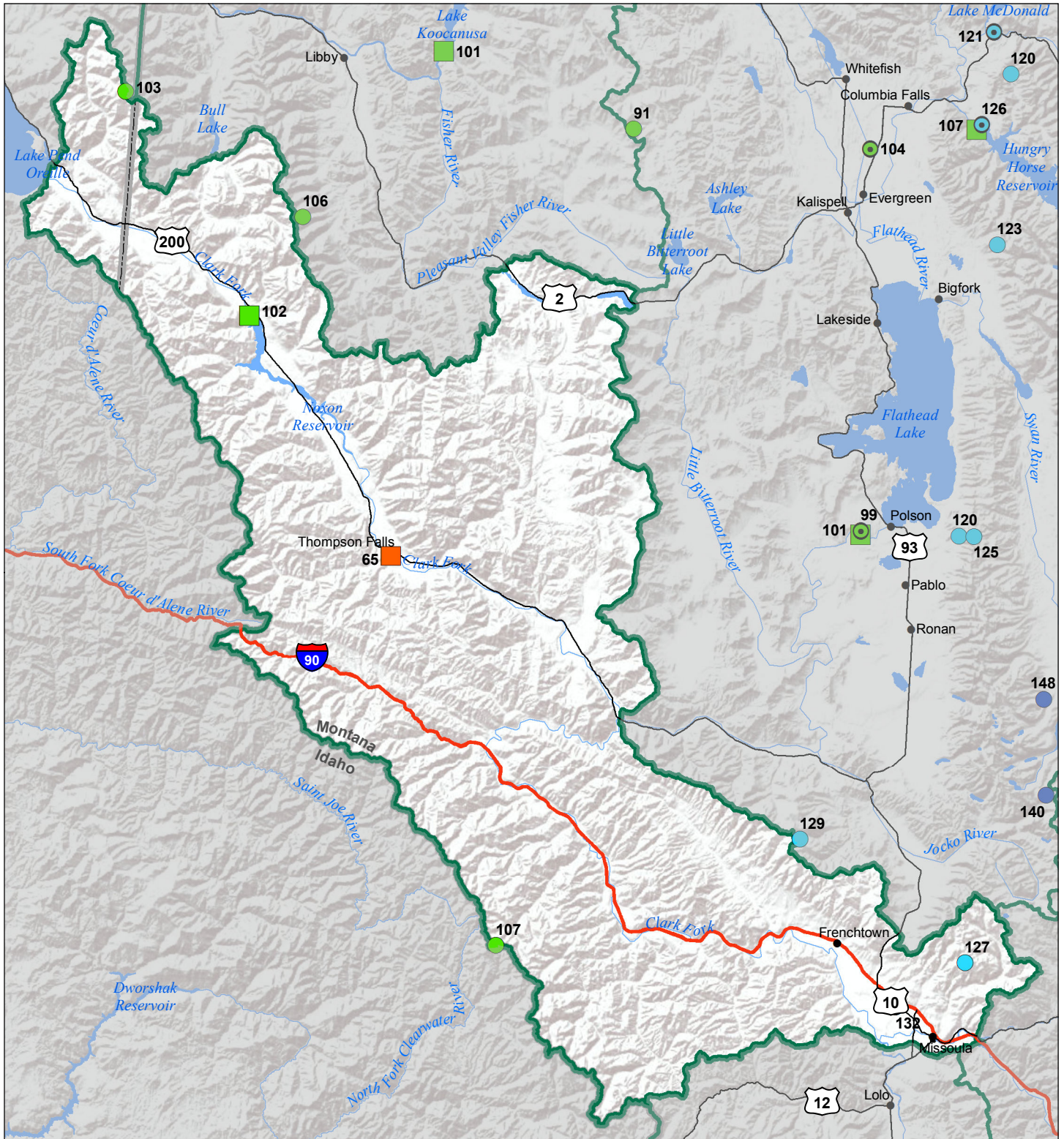


# Lower Clark Fork River Basin

## Water Year to Date Precipitation and Reservoir Levels

### Percentage of Normal

July 1, 2018



### Precipitation Percent of Normal

SNOTEL		COOP/ACIS	
● > 150%	● 71 - 90%	● > 150%	● 71 - 90%
● 131 - 150%	● 51 - 70%	● 131 - 150%	● 51 - 70%
● 111 - 130%	● 1 - 50%	● 111 - 130%	● 1 - 50%
● 91 - 110%		● 91 - 110%	

### Reservoirs Percent of Normal

■ > 150%
■ 131 - 150%
■ 111 - 130%
■ 91 - 110%
■ 71 - 90%
■ 51 - 70%
■ 1 - 50%

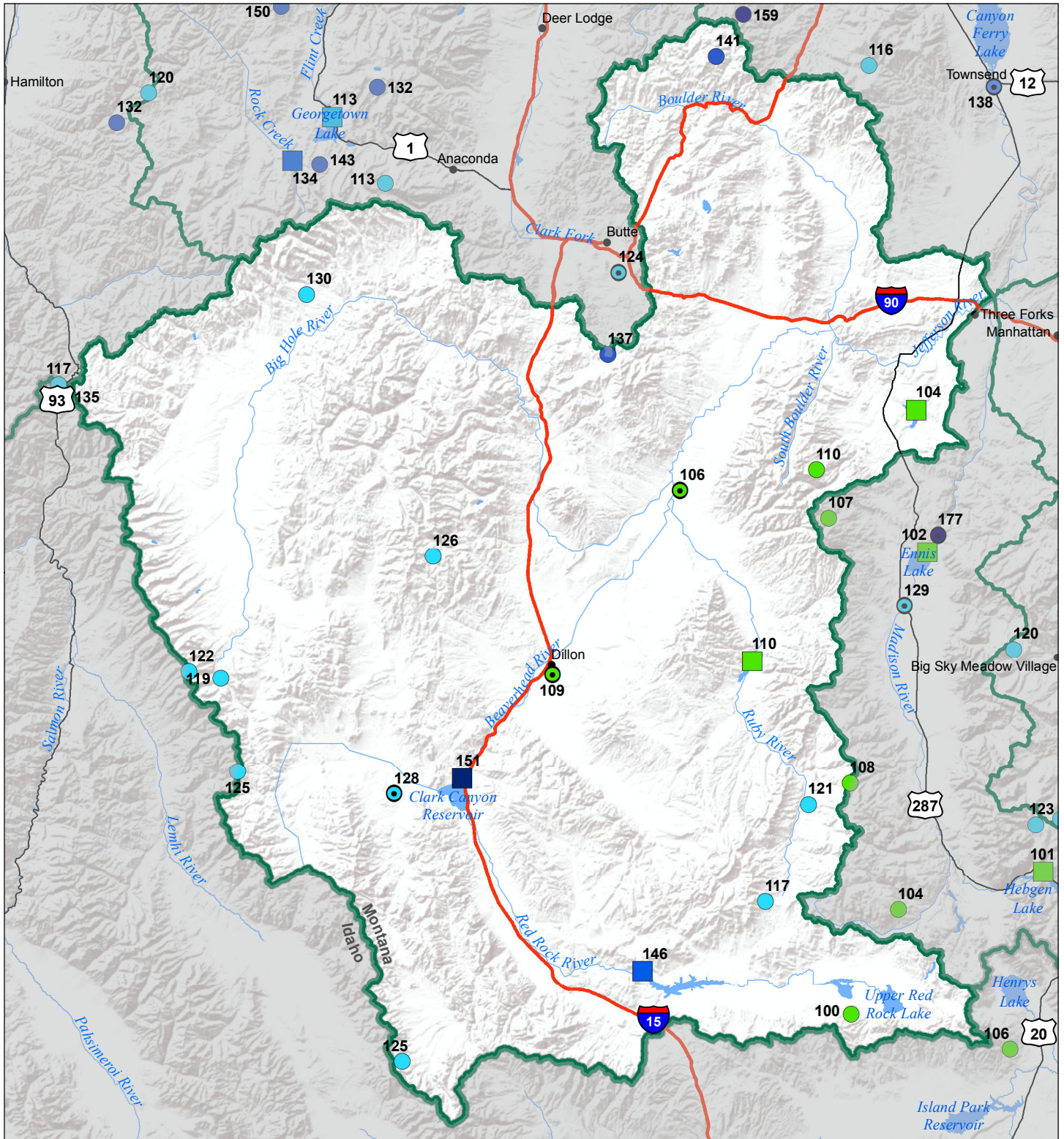


# Jefferson River Basin

## Water Year to Date Precipitation and Reservoir Levels

### Percentage of Normal

July 1, 2018



### Precipitation Percent of Normal

SNOTEL		COOP/ACIS	
<span style="color: blue;">●</span> > 150%	<span style="color: yellow;">●</span> 71 - 90%	<span style="color: blue;">●</span> > 150%	<span style="color: yellow;">●</span> 71 - 90%
<span style="color: blue;">●</span> 131 - 150%	<span style="color: orange;">●</span> 51 - 70%	<span style="color: blue;">●</span> 131 - 150%	<span style="color: orange;">●</span> 51 - 70%
<span style="color: cyan;">●</span> 111 - 130%	<span style="color: red;">●</span> 1 - 50%	<span style="color: cyan;">●</span> 111 - 130%	<span style="color: red;">●</span> 1 - 50%
<span style="color: green;">●</span> 91 - 110%		<span style="color: green;">●</span> 91 - 110%	

### Reservoirs Percent of Normal

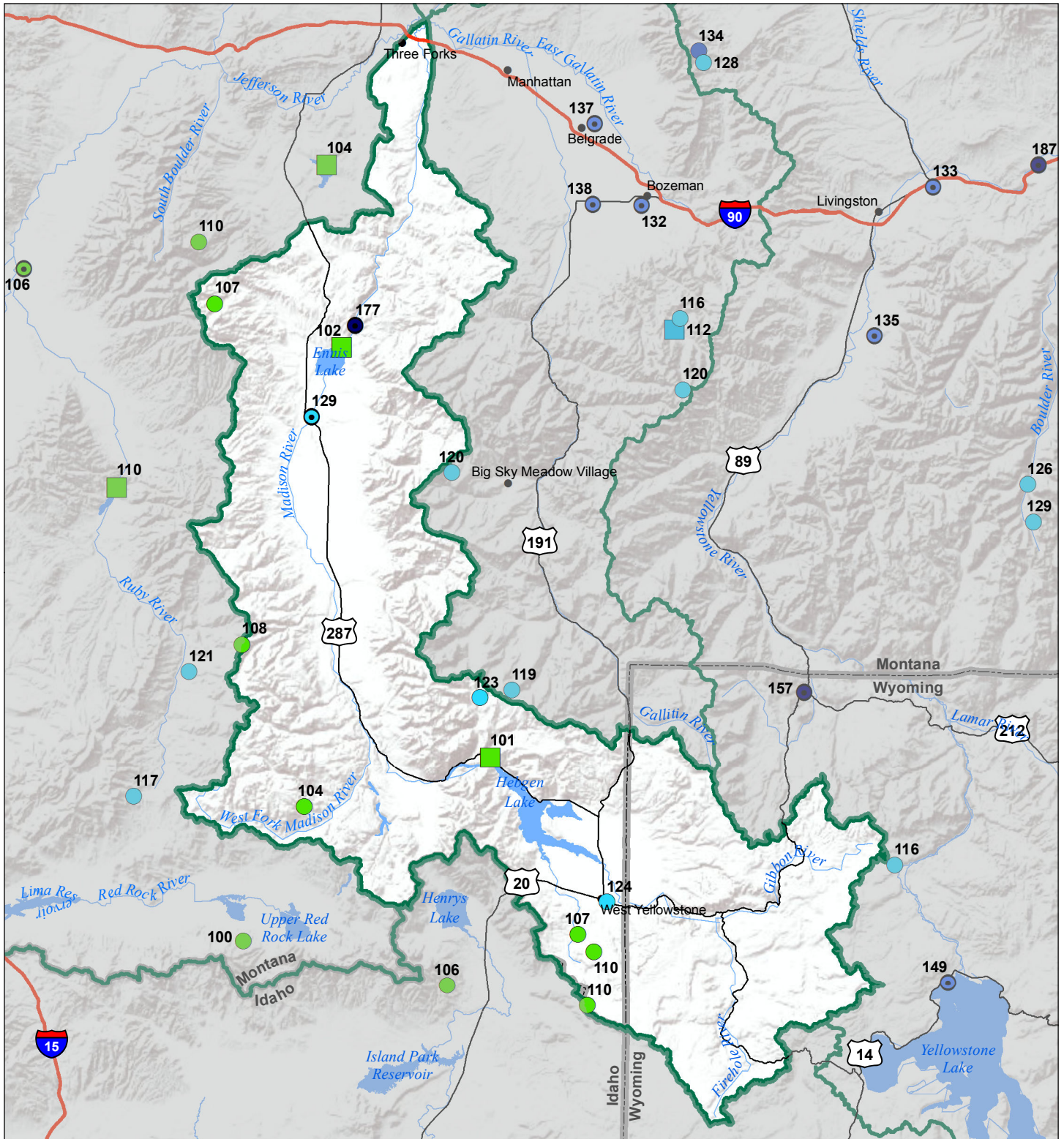
<span style="color: darkblue;">■</span> > 150%
<span style="color: blue;">■</span> 131 - 150%
<span style="color: cyan;">■</span> 111 - 130%
<span style="color: green;">■</span> 91 - 110%
<span style="color: yellow;">■</span> 71 - 90%
<span style="color: orange;">■</span> 51 - 70%
<span style="color: red;">■</span> 1 - 50%



# Madison River Basin

## Water Year to Date Precipitation and Reservoir Levels Percentage of Normal

### July 1, 2018



#### Precipitation Percent of Normal

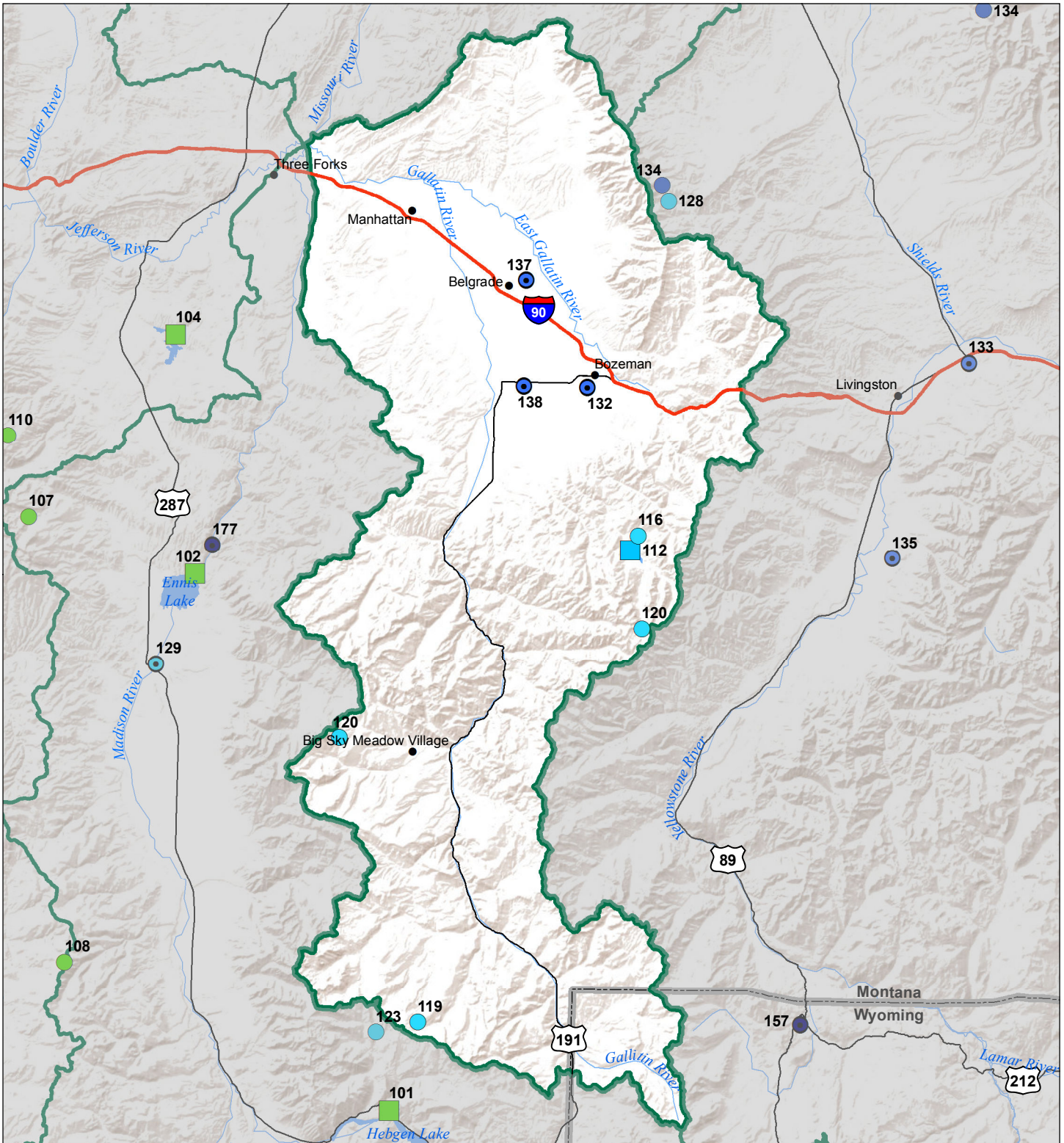
SNOTEL		COOP/ACIS	
<span style="color: blue;">●</span> > 150%	<span style="color: yellow;">●</span> 71 - 90%	<span style="color: blue;">●</span> > 150%	<span style="color: yellow;">●</span> 71 - 90%
<span style="color: lightblue;">●</span> 131 - 150%	<span style="color: orange;">●</span> 51 - 70%	<span style="color: lightblue;">●</span> 131 - 150%	<span style="color: orange;">●</span> 51 - 70%
<span style="color: cyan;">●</span> 111 - 130%	<span style="color: red;">●</span> 1 - 50%	<span style="color: cyan;">●</span> 111 - 130%	<span style="color: red;">●</span> 1 - 50%
<span style="color: green;">●</span> 91 - 110%		<span style="color: green;">●</span> 91 - 110%	

#### Reservoirs Percent of Normal

<span style="color: darkblue;">■</span> > 150%
<span style="color: blue;">■</span> 131 - 150%
<span style="color: lightblue;">■</span> 111 - 130%
<span style="color: cyan;">■</span> 91 - 110%
<span style="color: yellow;">■</span> 71 - 90%
<span style="color: orange;">■</span> 51 - 70%
<span style="color: red;">■</span> 1 - 50%



# Gallatin River Basin Water Year to Date Precipitation and Reservoir Levels Percentage of Normal July 1, 2018

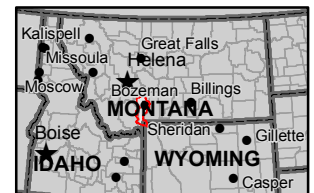


### Precipitation Percent of Normal

SNOTEL		COOP/ACIS	
● > 150%	● 71 - 90%	● > 150%	● 71 - 90%
● 131 - 150%	● 51 - 70%	● 131 - 150%	● 51 - 70%
● 111 - 130%	● 1 - 50%	● 111 - 130%	● 1 - 50%
● 91 - 110%		● 91 - 110%	

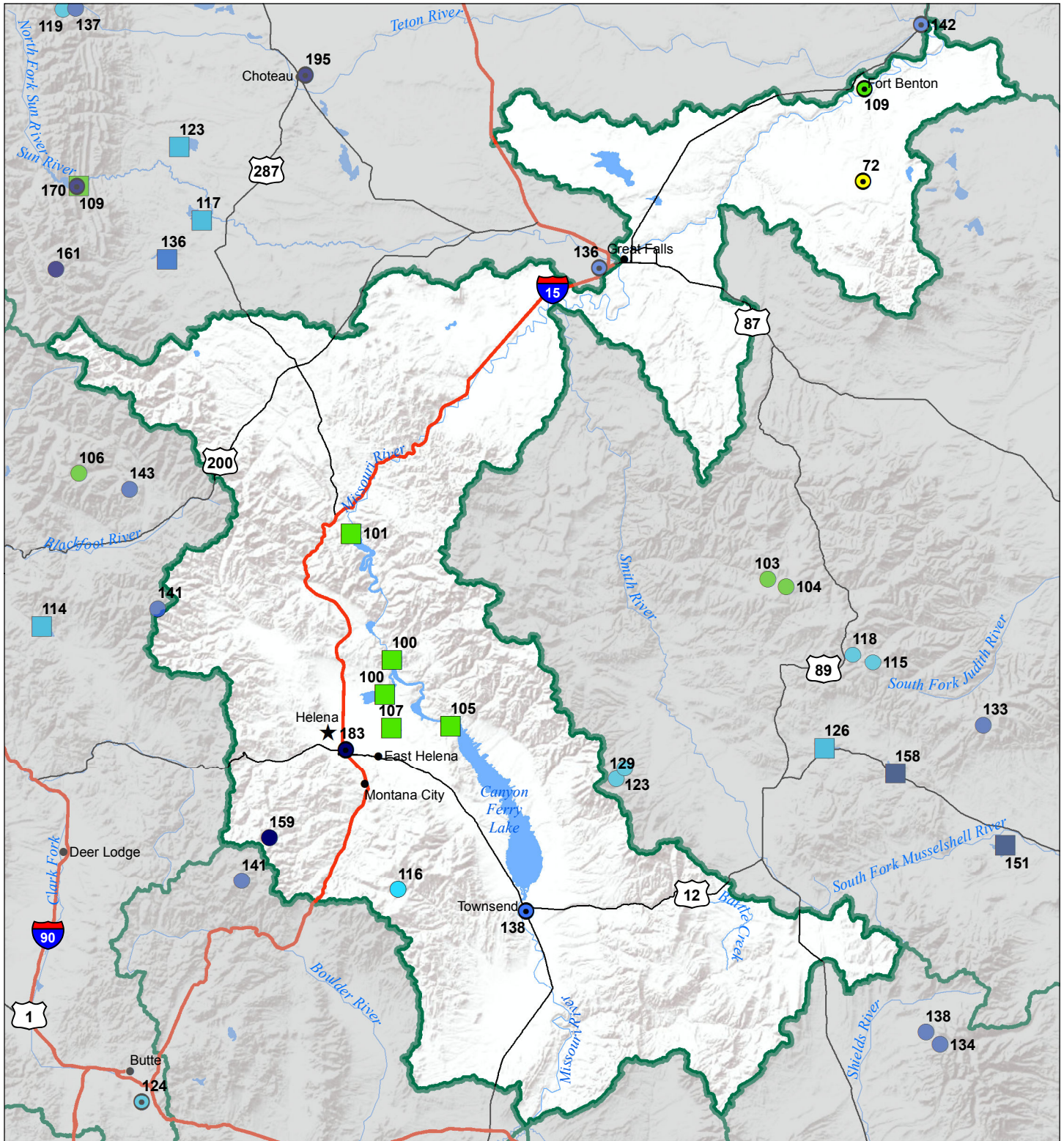
### Reservoirs Percent of Normal

■ > 150%
■ 131 - 150%
■ 111 - 130%
■ 91 - 110%
■ 71 - 90%
■ 51 - 70%
■ 1 - 50%





# Headwaters Mainstem (Missouri) River Basin Water Year to Date Precipitation and Reservoir Levels Percentage of Normal July 1, 2018

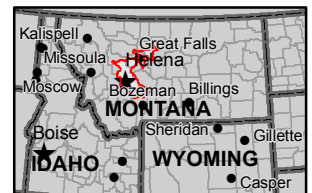


### Precipitation Percent of Normal

SNOTEL		COOP/ACIS	
● > 150%	● 71 - 90%	● > 150%	● 71 - 90%
● 131 - 150%	● 51 - 70%	● 131 - 150%	● 51 - 70%
● 111 - 130%	● 1 - 50%	● 111 - 130%	● 1 - 50%
● 91 - 110%		● 91 - 110%	

### Reservoirs Percent of Normal

■ > 150%
■ 131 - 150%
■ 111 - 130%
■ 91 - 110%
■ 71 - 90%
■ 51 - 70%
■ 1 - 50%

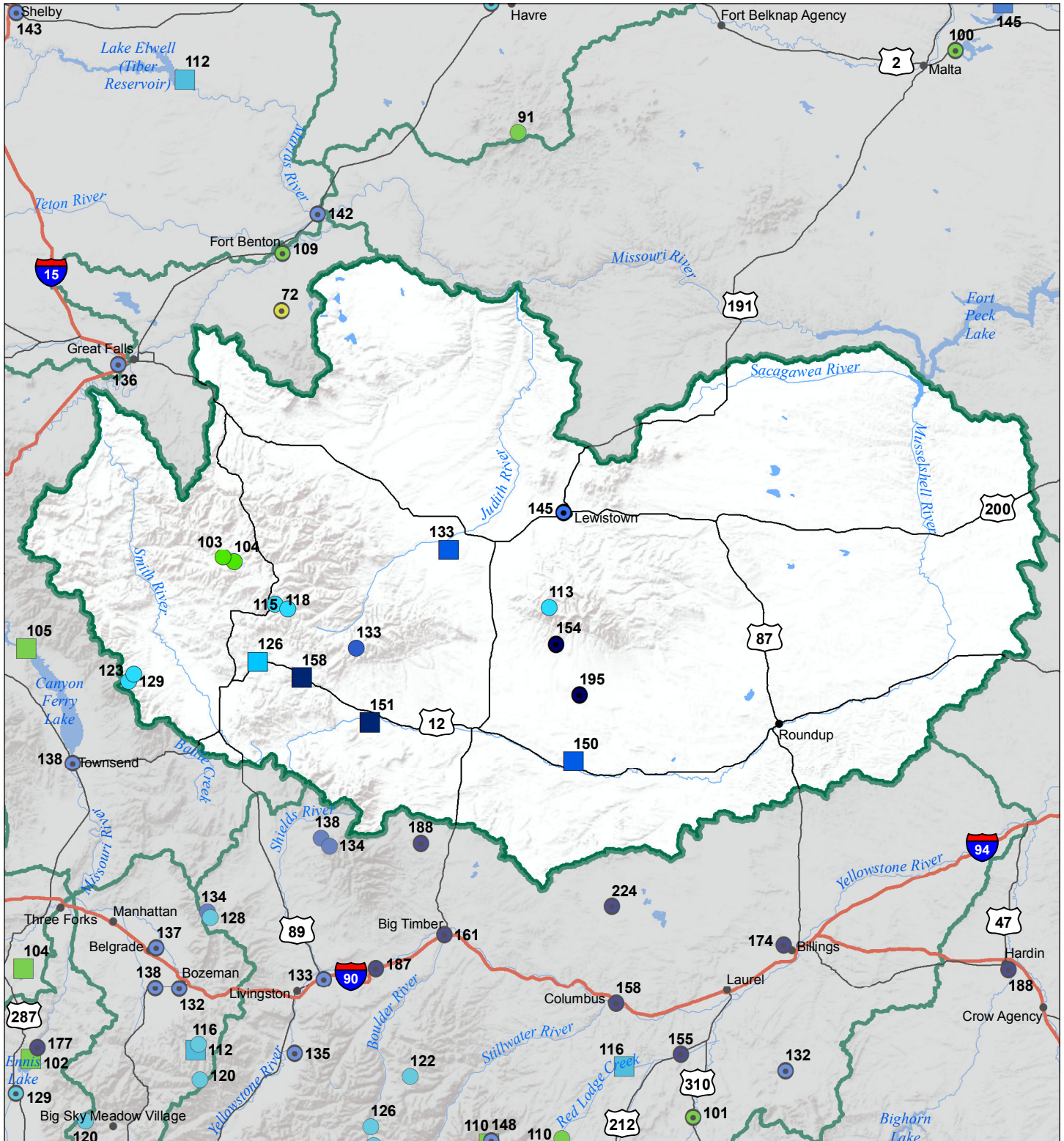


# Smith-Judith-Musselshell River Basin

## Water Year to Date Precipitation and Reservoir Levels

### Percentage of Normal

#### July 1, 2018



### Precipitation Percent of Normal

#### SNOTEL

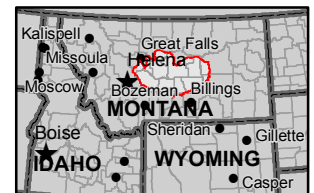
- > 150%
- 131 - 150%
- 111 - 130%
- 91 - 110%
- 71 - 90%
- 51 - 70%
- 1 - 50%

#### COOP/ACIS

- > 150%
- 131 - 150%
- 111 - 130%
- 91 - 110%
- 71 - 90%
- 51 - 70%
- 1 - 50%

### Reservoirs Percent of Normal

- > 150%
- 131 - 150%
- 111 - 130%
- 91 - 110%
- 71 - 90%
- 51 - 70%
- 1 - 50%

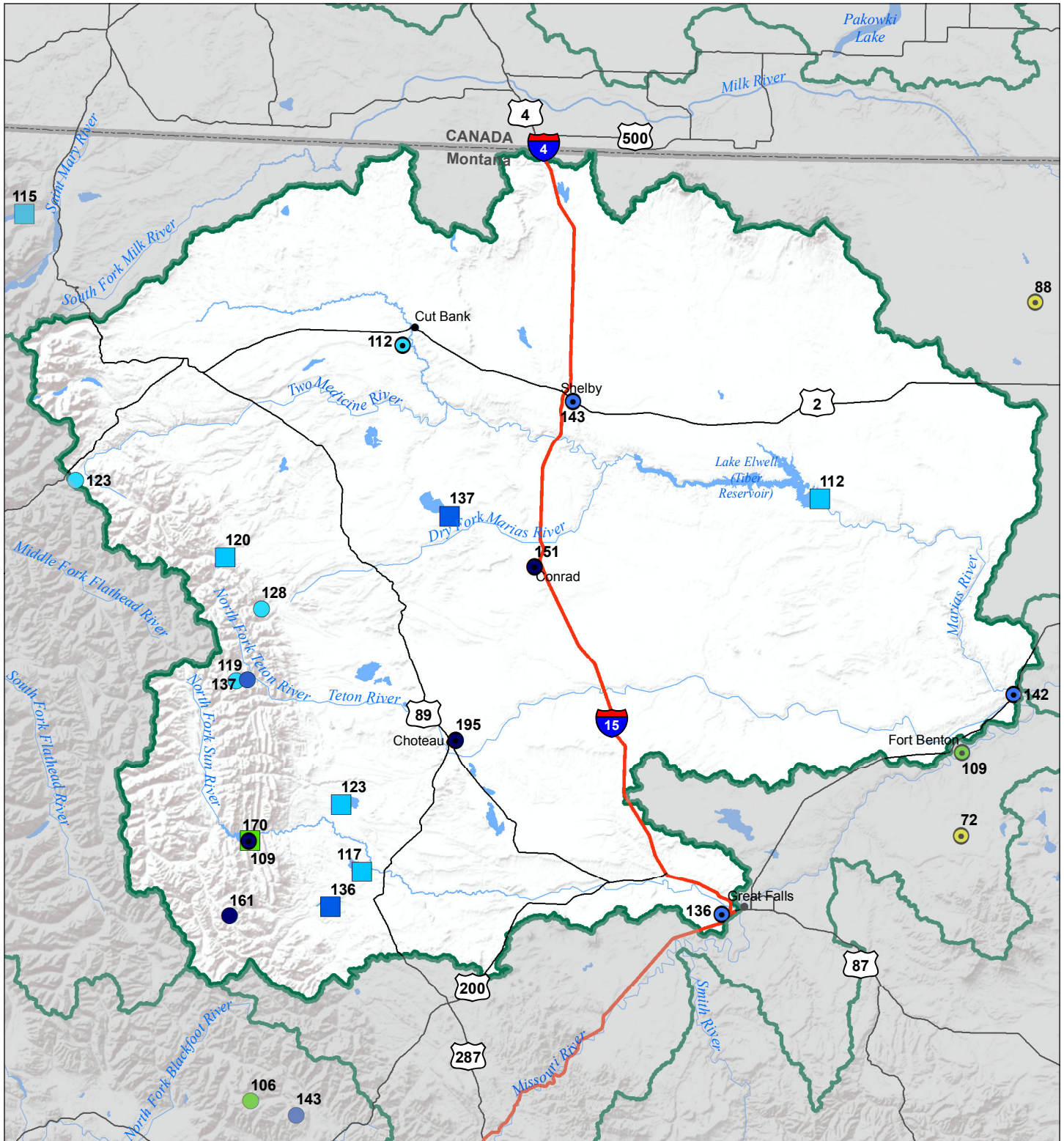


# Sun-Teton-Marias River Basin

## Water Year to Date Precipitation and Reservoir Levels

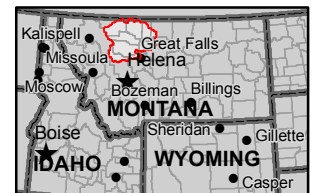
### Percentage of Normal

#### July 1, 2018



Precipitation Percent of Normal		COOP/ACIS	
<b>SNOTEL</b>		<b>COOP/ACIS</b>	
● > 150%	● 71 - 90%	● > 150%	● 71 - 90%
● 131 - 150%	● 51 - 70%	● 131 - 150%	● 51 - 70%
● 111 - 130%	● 1 - 50%	● 111 - 130%	● 1 - 50%
● 91 - 110%		● 91 - 110%	

Reservoirs Percent of Normal	
■ > 150%	● 71 - 90%
■ 131 - 150%	● 51 - 70%
■ 111 - 130%	● 1 - 50%
■ 91 - 110%	
■ 71 - 90%	
■ 51 - 70%	
■ 1 - 50%	

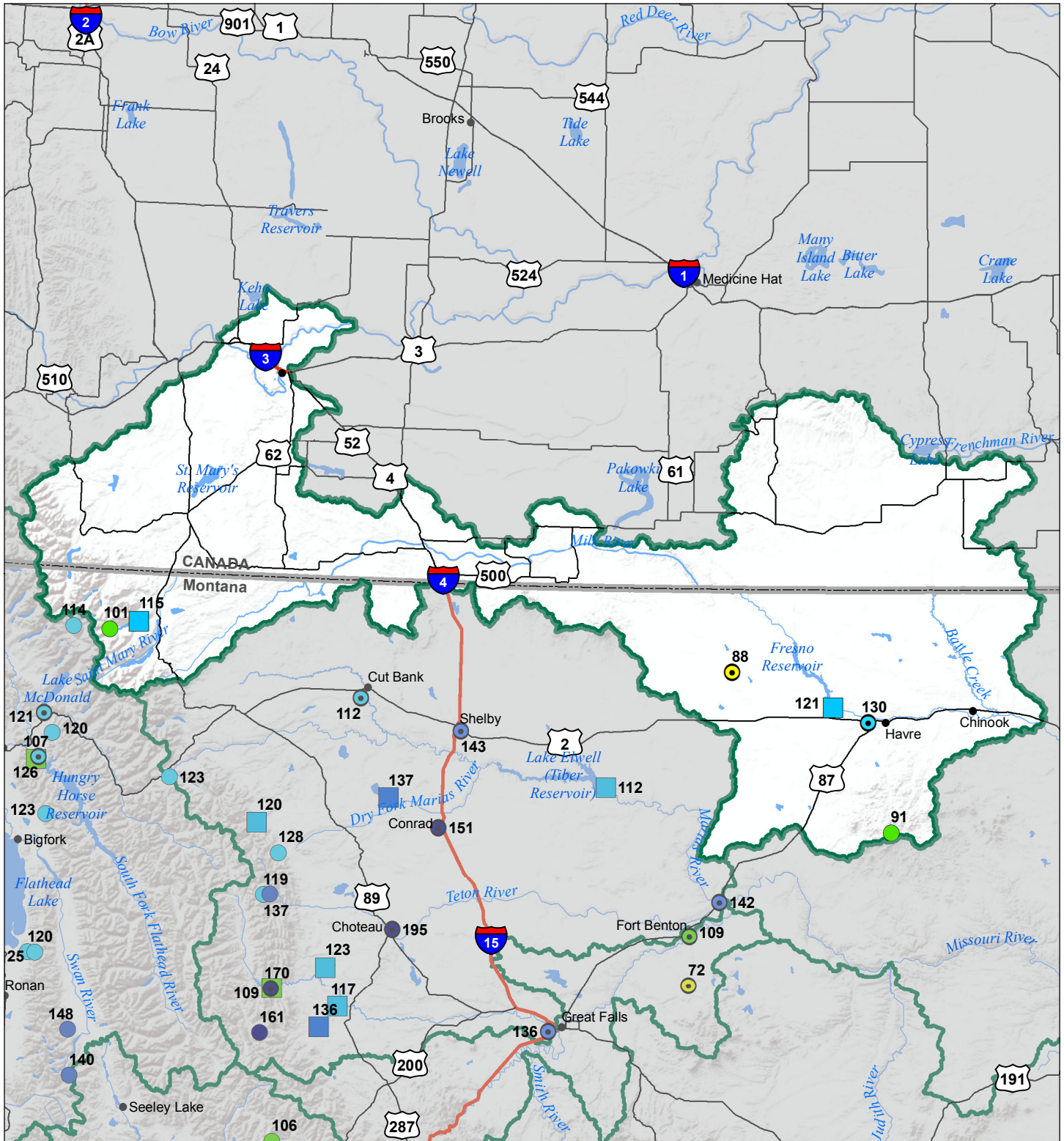


# St Mary's-Milk River Basin

## Water Year to Date Precipitation and Reservoir Levels

### Percentage of Normal

July 1, 2018

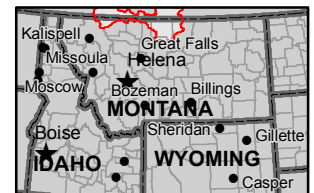


### Precipitation Percent of Normal

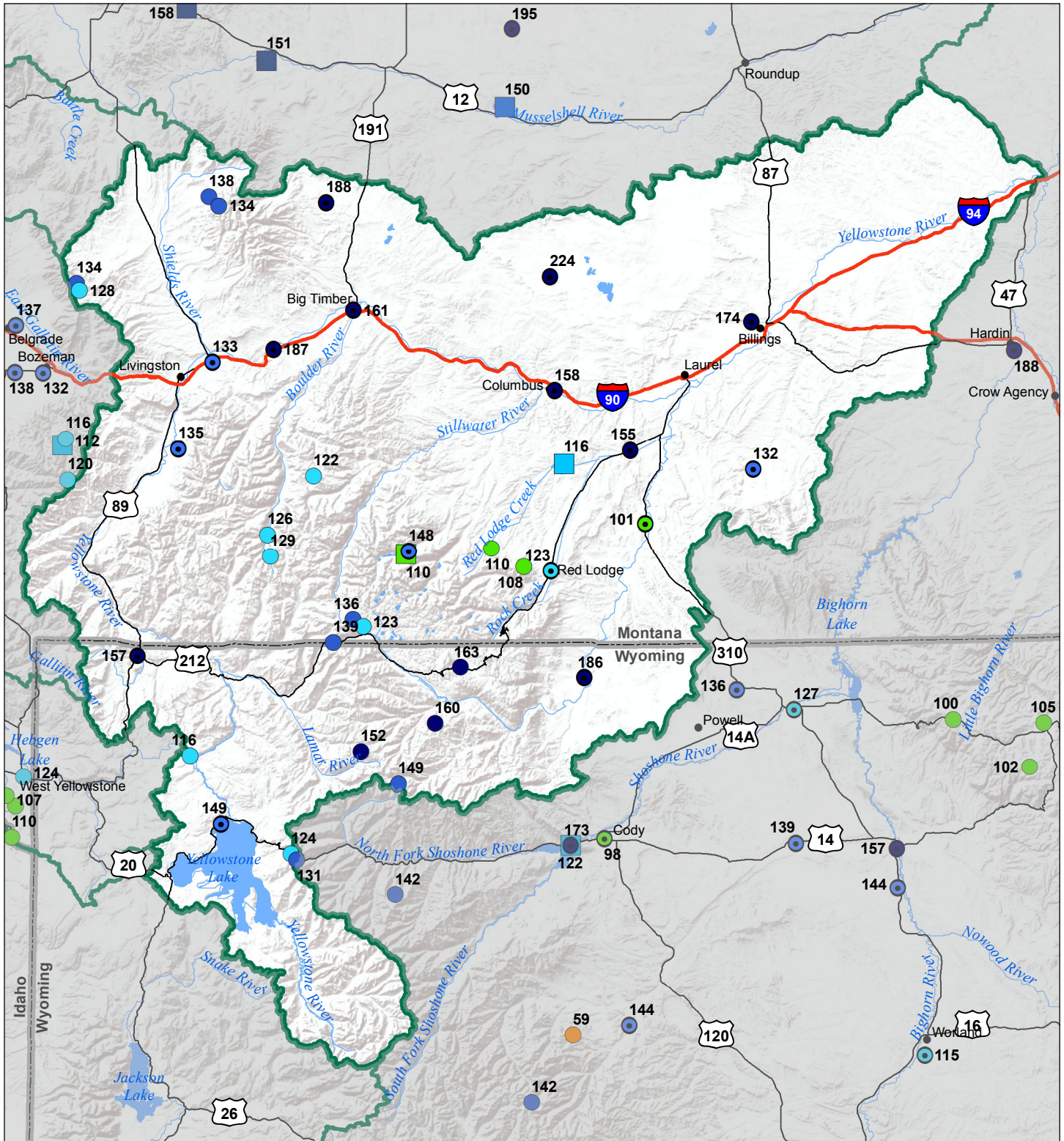
SNOTEL		COOP/ACIS	
<span style="color: blue;">●</span> > 150%	<span style="color: yellow;">●</span> 71 - 90%	<span style="color: blue;">●</span> > 150%	<span style="color: yellow;">●</span> 71 - 90%
<span style="color: lightblue;">●</span> 131 - 150%	<span style="color: orange;">●</span> 51 - 70%	<span style="color: lightblue;">●</span> 131 - 150%	<span style="color: orange;">●</span> 51 - 70%
<span style="color: cyan;">●</span> 111 - 130%	<span style="color: red;">●</span> 1 - 50%	<span style="color: cyan;">●</span> 111 - 130%	<span style="color: red;">●</span> 1 - 50%
<span style="color: green;">●</span> 91 - 110%		<span style="color: green;">●</span> 91 - 110%	

### Reservoirs Percent of Normal

<span style="background-color: blue; width: 15px; height: 15px; display: inline-block;"></span> > 150%
<span style="background-color: lightblue; width: 15px; height: 15px; display: inline-block;"></span> 131 - 150%
<span style="background-color: cyan; width: 15px; height: 15px; display: inline-block;"></span> 111 - 130%
<span style="background-color: green; width: 15px; height: 15px; display: inline-block;"></span> 91 - 110%
<span style="background-color: yellow; width: 15px; height: 15px; display: inline-block;"></span> 71 - 90%
<span style="background-color: orange; width: 15px; height: 15px; display: inline-block;"></span> 51 - 70%
<span style="background-color: red; width: 15px; height: 15px; display: inline-block;"></span> 1 - 50%



# Upper Yellowstone River Basin Water Year to Date Precipitation and Reservoir Levels Percentage of Normal July 1, 2018

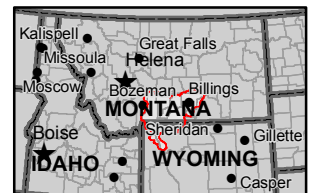


### Precipitation Percent of Normal

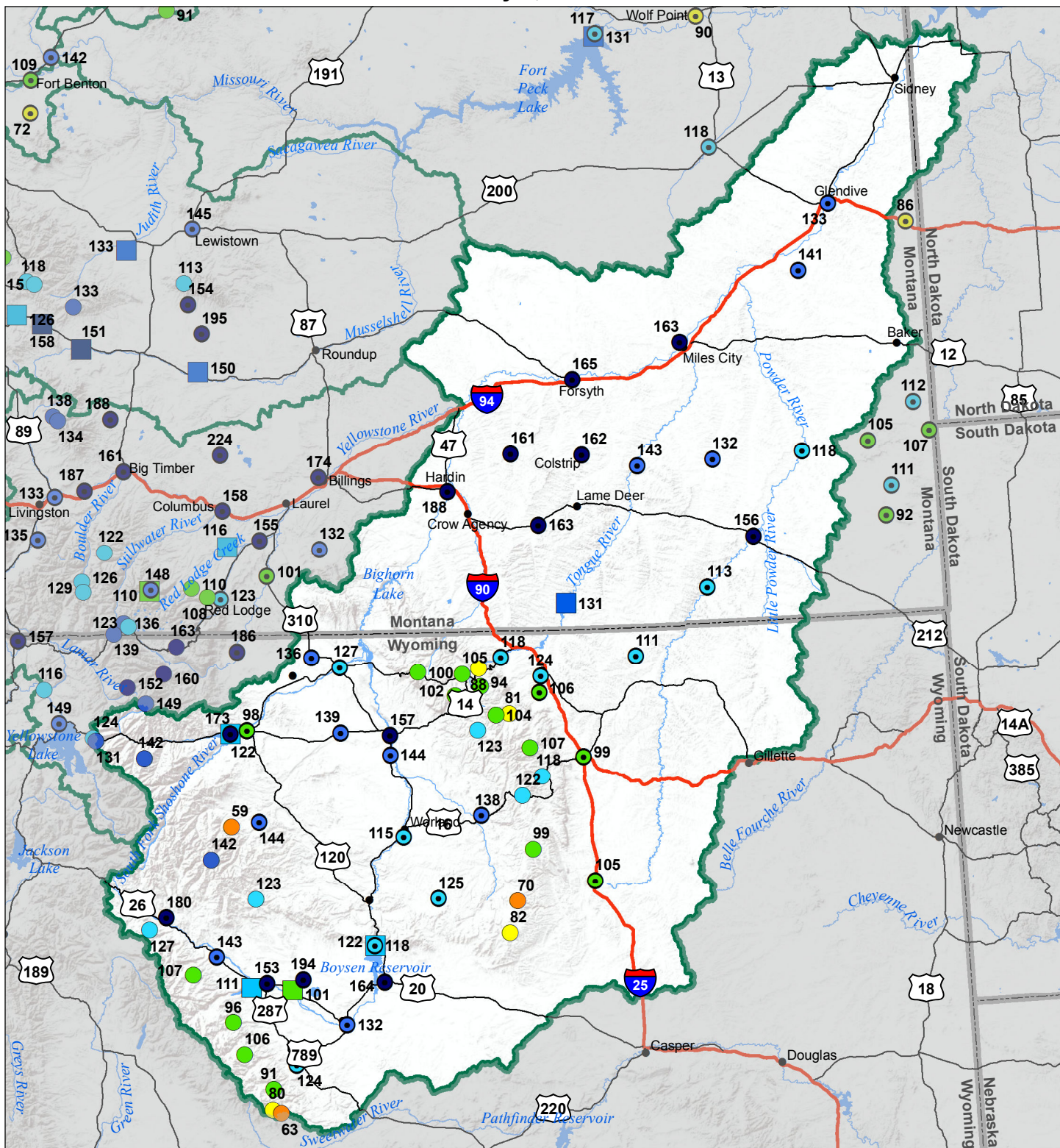
SNOTEL		COOP/ACIS	
<span style="color: blue;">●</span> > 150%	<span style="color: yellow;">●</span> 71 - 90%	<span style="color: blue;">●</span> > 150%	<span style="color: yellow;">●</span> 71 - 90%
<span style="color: lightblue;">●</span> 131 - 150%	<span style="color: orange;">●</span> 51 - 70%	<span style="color: lightblue;">●</span> 131 - 150%	<span style="color: orange;">●</span> 51 - 70%
<span style="color: cyan;">●</span> 111 - 130%	<span style="color: red;">●</span> 1 - 50%	<span style="color: cyan;">●</span> 111 - 130%	<span style="color: red;">●</span> 1 - 50%
<span style="color: green;">●</span> 91 - 110%		<span style="color: green;">●</span> 91 - 110%	

### Reservoirs Percent of Normal

<span style="color: darkblue;">■</span> > 150%
<span style="color: blue;">■</span> 131 - 150%
<span style="color: lightblue;">■</span> 111 - 130%
<span style="color: cyan;">■</span> 91 - 110%
<span style="color: yellow;">■</span> 71 - 90%
<span style="color: orange;">■</span> 51 - 70%
<span style="color: red;">■</span> 1 - 50%



# Lower Yellowstone River Basin Water Year to Date Precipitation and Reservoir Levels Percentage of Normal July 1, 2018



### Precipitation Percent of Normal

SNOTEL		COOP/ACIS	
● > 150%	● 71 - 90%	● > 150%	● 71 - 90%
● 131 - 150%	● 51 - 70%	● 131 - 150%	● 51 - 70%
● 111 - 130%	● 1 - 50%	● 111 - 130%	● 1 - 50%
● 91 - 110%		● 91 - 110%	

### Reservoirs Percent of Normal

■ > 150%
■ 131 - 150%
■ 111 - 130%
■ 91 - 110%
■ 71 - 90%
■ 51 - 70%
■ 1 - 50%

