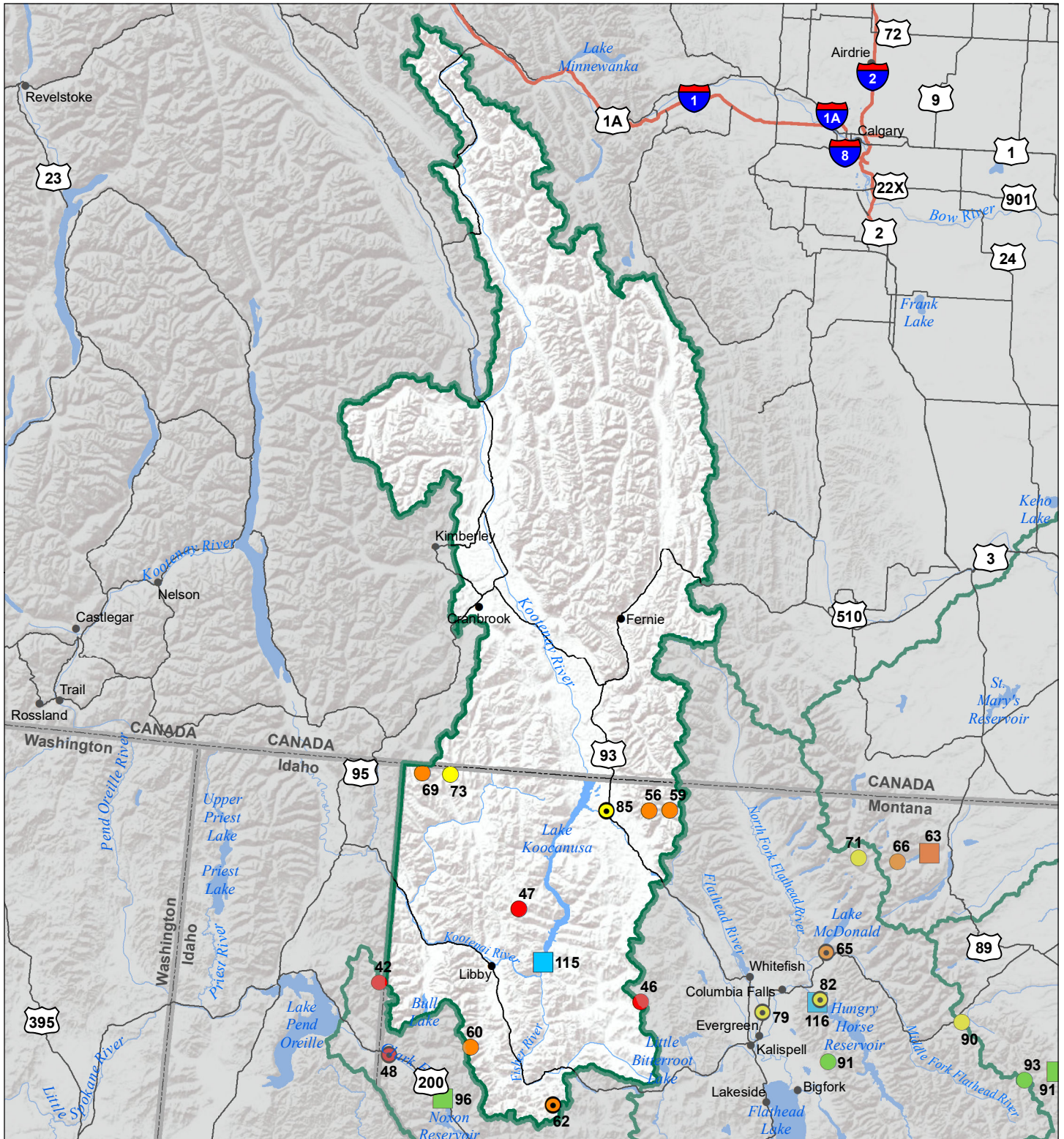


# Kootenai River Basin Water Year to Date Precipitation and Reservoir Levels Percentage of Normal December 1, 2019



### Precipitation Percent of Normal

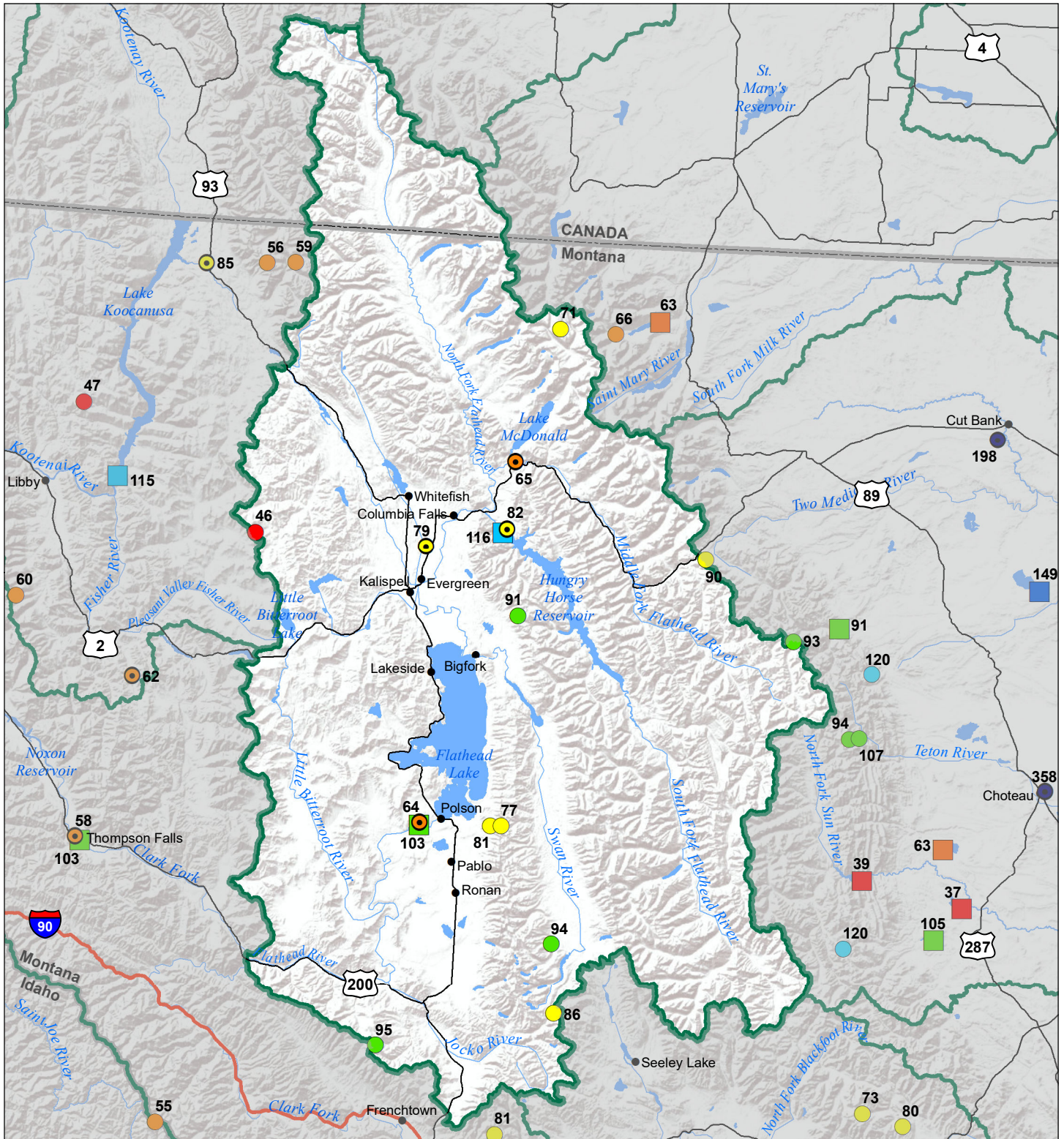
SNOTEL		COOP/ACIS	
● > 150%	● 71 - 90%	● > 150%	● 71 - 90%
● 131 - 150%	● 51 - 70%	● 131 - 150%	● 51 - 70%
● 111 - 130%	● 1 - 50%	● 111 - 130%	● 1 - 50%
● 91 - 110%		● 91 - 110%	

### Reservoirs Percent of Normal

■ > 150%
■ 131 - 150%
■ 111 - 130%
■ 91 - 110%
■ 71 - 90%
■ 51 - 70%
■ 1 - 50%



# Flathead River Basin Water Year to Date Precipitation and Reservoir Levels Percentage of Normal December 1, 2019

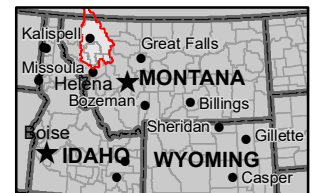


### Precipitation Percent of Normal

SNOTEL		COOP/ACIS	
● > 150%	● 71 - 90%	● > 150%	● 71 - 90%
● 131 - 150%	● 51 - 70%	● 131 - 150%	● 51 - 70%
● 111 - 130%	● 1 - 50%	● 111 - 130%	● 1 - 50%
● 91 - 110%		● 91 - 110%	

### Reservoirs Percent of Normal

■ > 150%
■ 131 - 150%
■ 111 - 130%
■ 91 - 110%
■ 71 - 90%
■ 51 - 70%
■ 1 - 50%

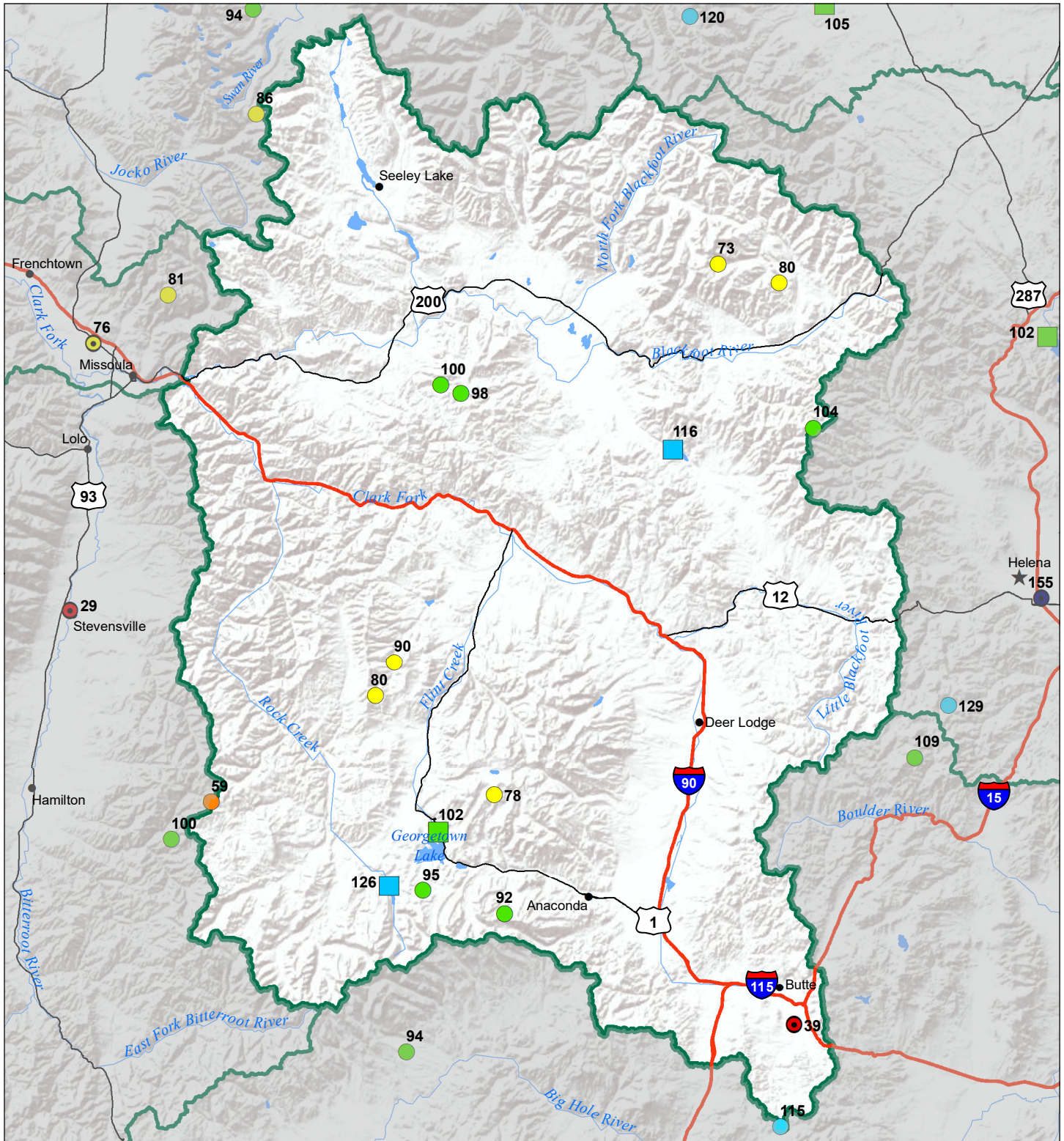


# Upper Clark Fork River Basin

## Water Year to Date Precipitation and Reservoir Levels

### Percentage of Normal

#### December 1, 2019

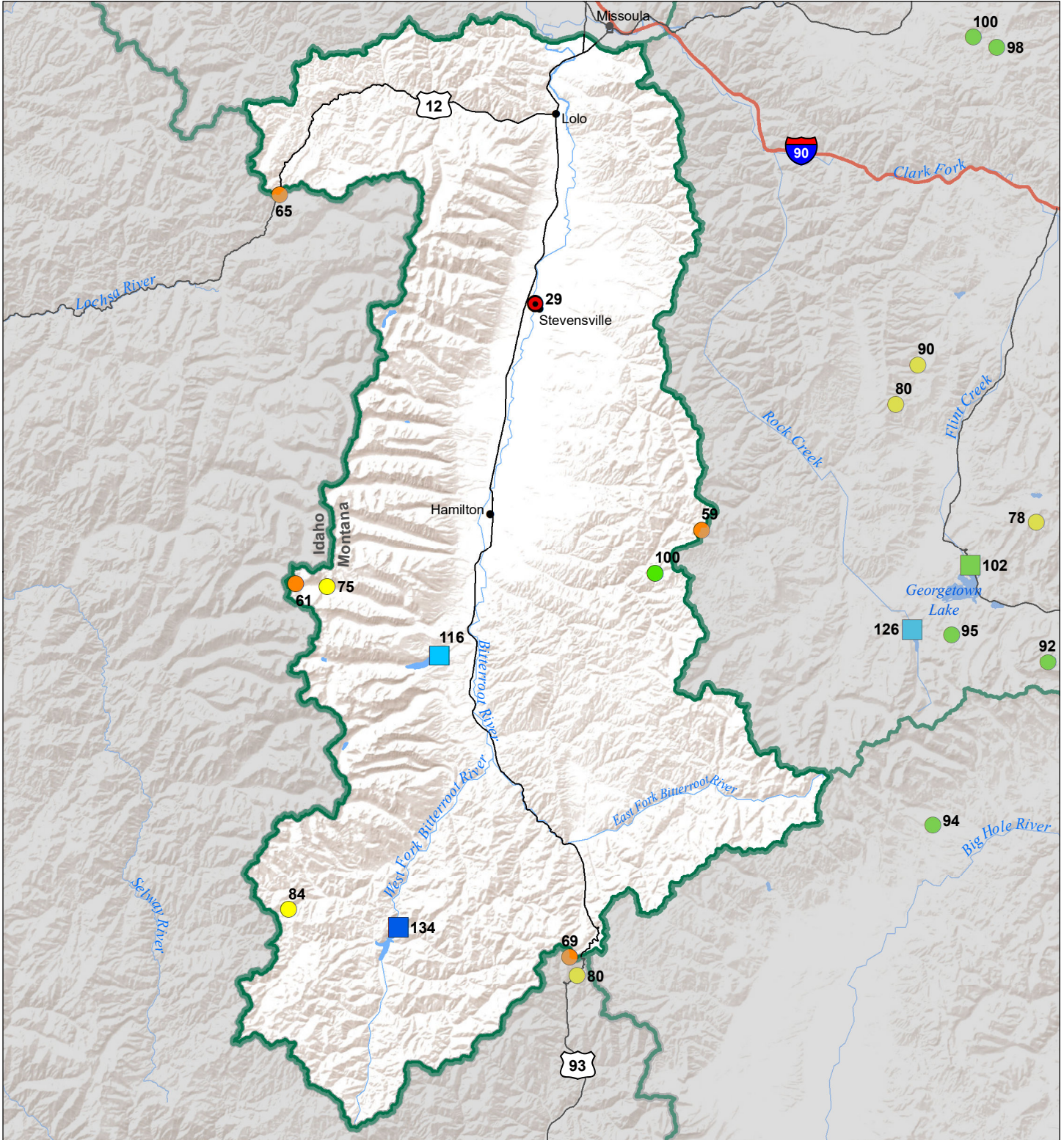


Precipitation Percent of Normal	
SNOTEL	COOP/ACIS
<ul style="list-style-type: none"> <li><span style="color: blue;">●</span> &gt; 150%</li> <li><span style="color: lightblue;">●</span> 131 - 150%</li> <li><span style="color: cyan;">●</span> 111 - 130%</li> <li><span style="color: green;">●</span> 91 - 110%</li> </ul>	<ul style="list-style-type: none"> <li><span style="color: yellow;">●</span> 71 - 90%</li> <li><span style="color: orange;">●</span> 51 - 70%</li> <li><span style="color: red;">●</span> 1 - 50%</li> </ul>

Reservoirs Percent of Normal	
<span style="color: darkblue;">■</span>	> 150%
<span style="color: blue;">■</span>	131 - 150%
<span style="color: lightblue;">■</span>	111 - 130%
<span style="color: cyan;">■</span>	91 - 110%
<span style="color: green;">■</span>	71 - 90%
<span style="color: yellow;">■</span>	51 - 70%
<span style="color: orange;">■</span>	51 - 70%
<span style="color: red;">■</span>	1 - 50%



# Bitterroot River Basin Water Year to Date Precipitation and Reservoir Levels Percentage of Normal December 1, 2019



### Precipitation Percent of Normal

SNOTEL		COOP/ACIS	
<span style="color: blue;">●</span> > 150%	<span style="color: yellow;">●</span> 71 - 90%	<span style="color: blue;">●</span> > 150%	<span style="color: yellow;">●</span> 71 - 90%
<span style="color: lightblue;">●</span> 131 - 150%	<span style="color: orange;">●</span> 51 - 70%	<span style="color: lightblue;">●</span> 131 - 150%	<span style="color: orange;">●</span> 51 - 70%
<span style="color: cyan;">●</span> 111 - 130%	<span style="color: red;">●</span> 1 - 50%	<span style="color: cyan;">●</span> 111 - 130%	<span style="color: red;">●</span> 1 - 50%
<span style="color: green;">●</span> 91 - 110%		<span style="color: green;">●</span> 91 - 110%	

### Reservoirs Percent of Normal

<span style="color: darkblue;">■</span> > 150%
<span style="color: blue;">■</span> 131 - 150%
<span style="color: lightblue;">■</span> 111 - 130%
<span style="color: green;">■</span> 91 - 110%
<span style="color: yellow;">■</span> 71 - 90%
<span style="color: orange;">■</span> 51 - 70%
<span style="color: red;">■</span> 1 - 50%

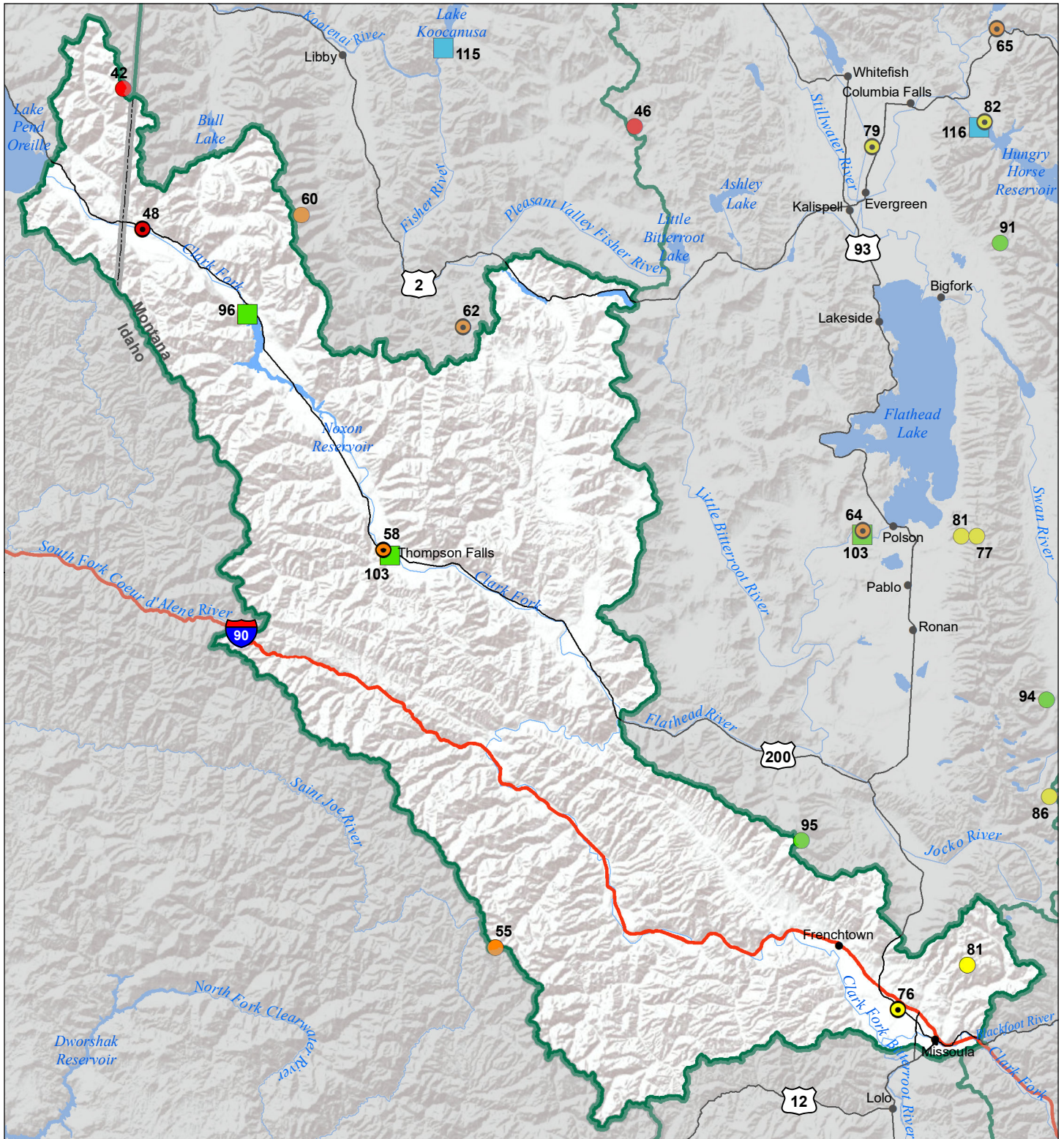


# Lower Clark Fork River Basin

## Water Year to Date Precipitation and Reservoir Levels

### Percentage of Normal

#### December 1, 2019



### Precipitation Percent of Normal

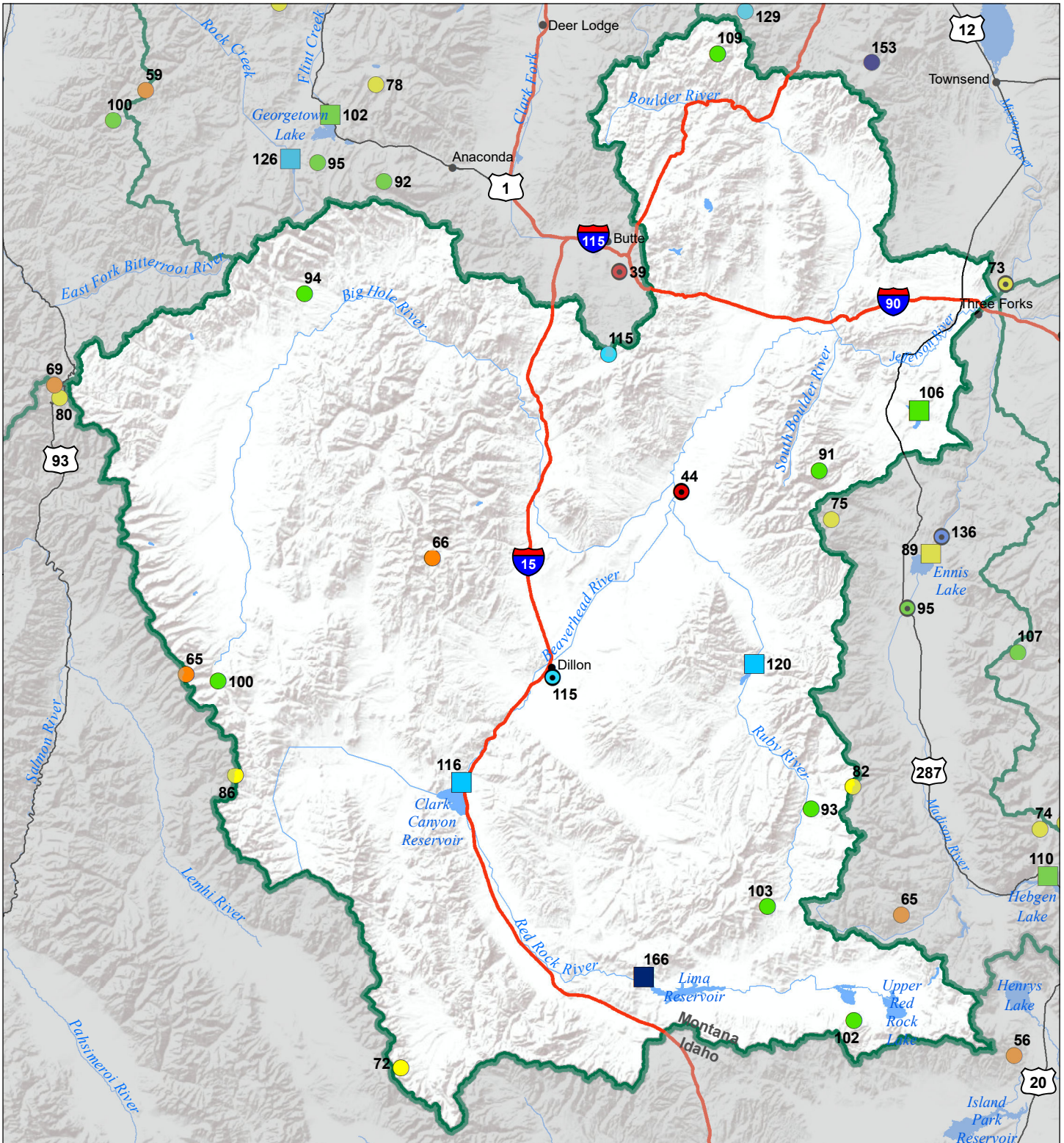
SNOTEL		COOP/ACIS	
● > 150%	● 71 - 90%	● > 150%	● 71 - 90%
● 131 - 150%	● 51 - 70%	● 131 - 150%	● 51 - 70%
● 111 - 130%	● 1 - 50%	● 111 - 130%	● 1 - 50%
● 91 - 110%		● 91 - 110%	

### Reservoirs Percent of Normal

■ > 150%
■ 131 - 150%
■ 111 - 130%
■ 91 - 110%
■ 71 - 90%
■ 51 - 70%
■ 1 - 50%



# Jefferson River Basin Water Year to Date Precipitation and Reservoir Levels Percentage of Normal December 1, 2019

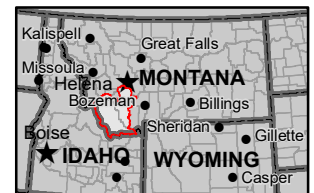


### Precipitation Percent of Normal

SNOTEL		COOP/ACIS	
● > 150%	● 71 - 90%	● > 150%	● 71 - 90%
● 131 - 150%	● 51 - 70%	● 131 - 150%	● 51 - 70%
● 111 - 130%	● 1 - 50%	● 111 - 130%	● 1 - 50%
● 91 - 110%		● 91 - 110%	

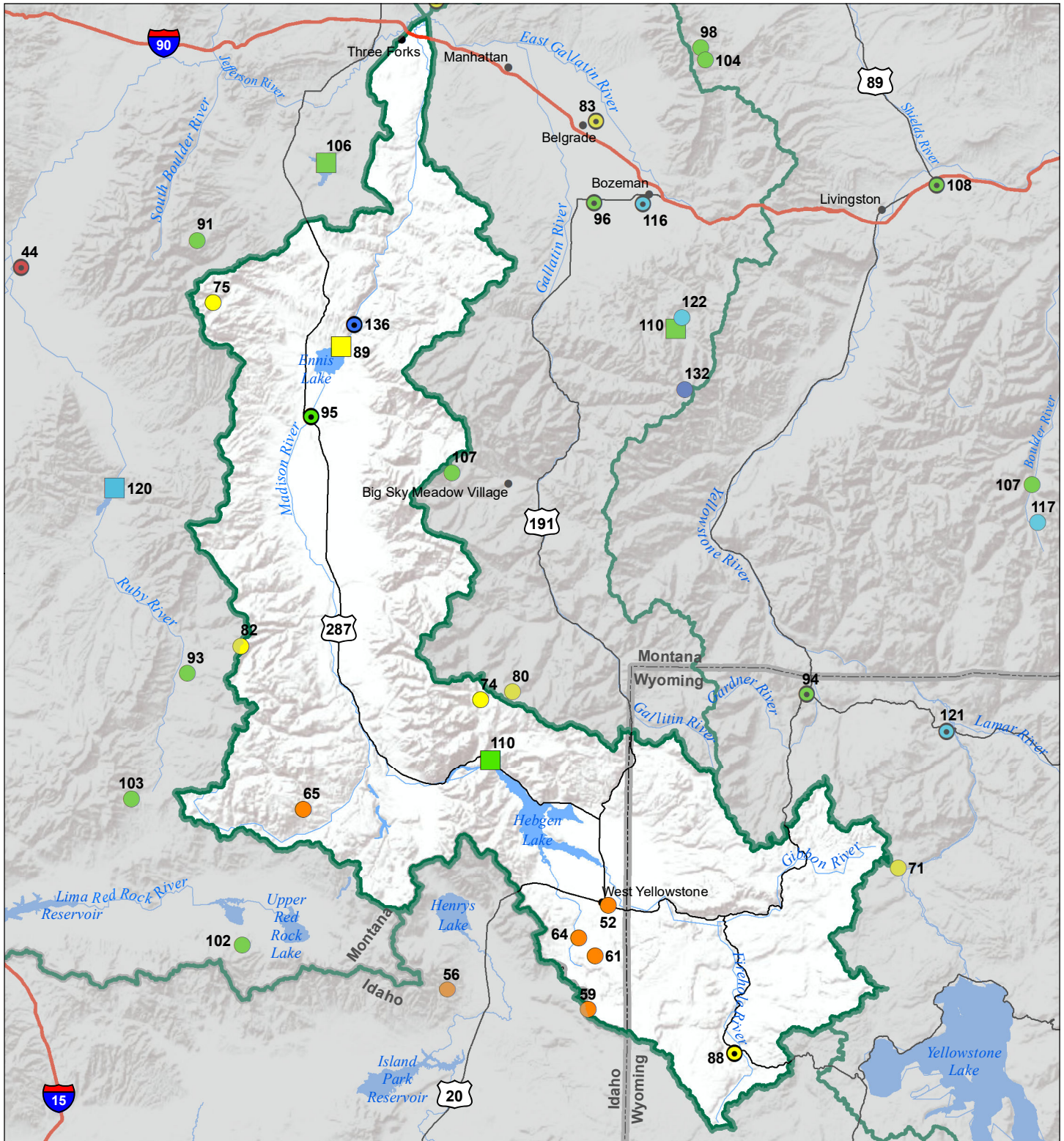
### Reservoirs Percent of Normal

■ > 150%
■ 131 - 150%
■ 111 - 130%
■ 91 - 110%
■ 71 - 90%
■ 51 - 70%
■ 1 - 50%



# Madison River Basin

## Water Year to Date Precipitation and Reservoir Levels Percentage of Normal December 1, 2019



### Precipitation Percent of Normal

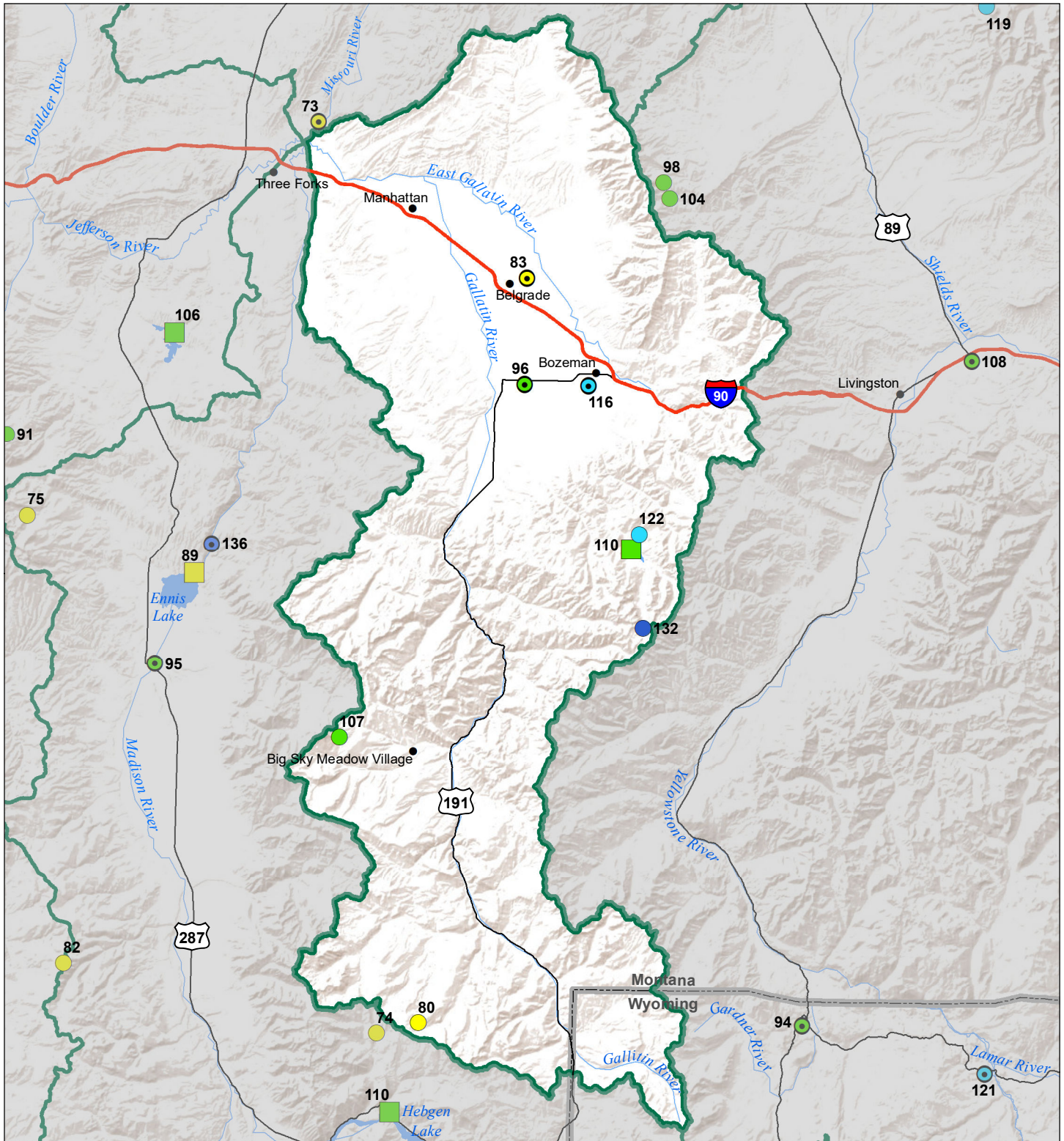
SNOTEL		COOP/ACIS	
Dark Blue	> 150%	Dark Blue	> 150%
Blue	131 - 150%	Blue	131 - 150%
Cyan	111 - 130%	Cyan	111 - 130%
Green	91 - 110%	Green	91 - 110%
Yellow	71 - 90%	Yellow	71 - 90%
Orange	51 - 70%	Orange	51 - 70%
Red	1 - 50%	Red	1 - 50%

### Reservoirs Percent of Normal

Dark Blue	> 150%
Blue	131 - 150%
Cyan	111 - 130%
Green	91 - 110%
Yellow	71 - 90%
Orange	51 - 70%
Red	1 - 50%



# Gallatin River Basin Water Year to Date Precipitation and Reservoir Levels Percentage of Normal December 1, 2019



### Precipitation Percent of Normal

SNOTEL		COOP/ACIS	
● > 150%	● 71 - 90%	● > 150%	● 71 - 90%
● 131 - 150%	● 51 - 70%	● 131 - 150%	● 51 - 70%
● 111 - 130%	● 1 - 50%	● 111 - 130%	● 1 - 50%
● 91 - 110%		● 91 - 110%	

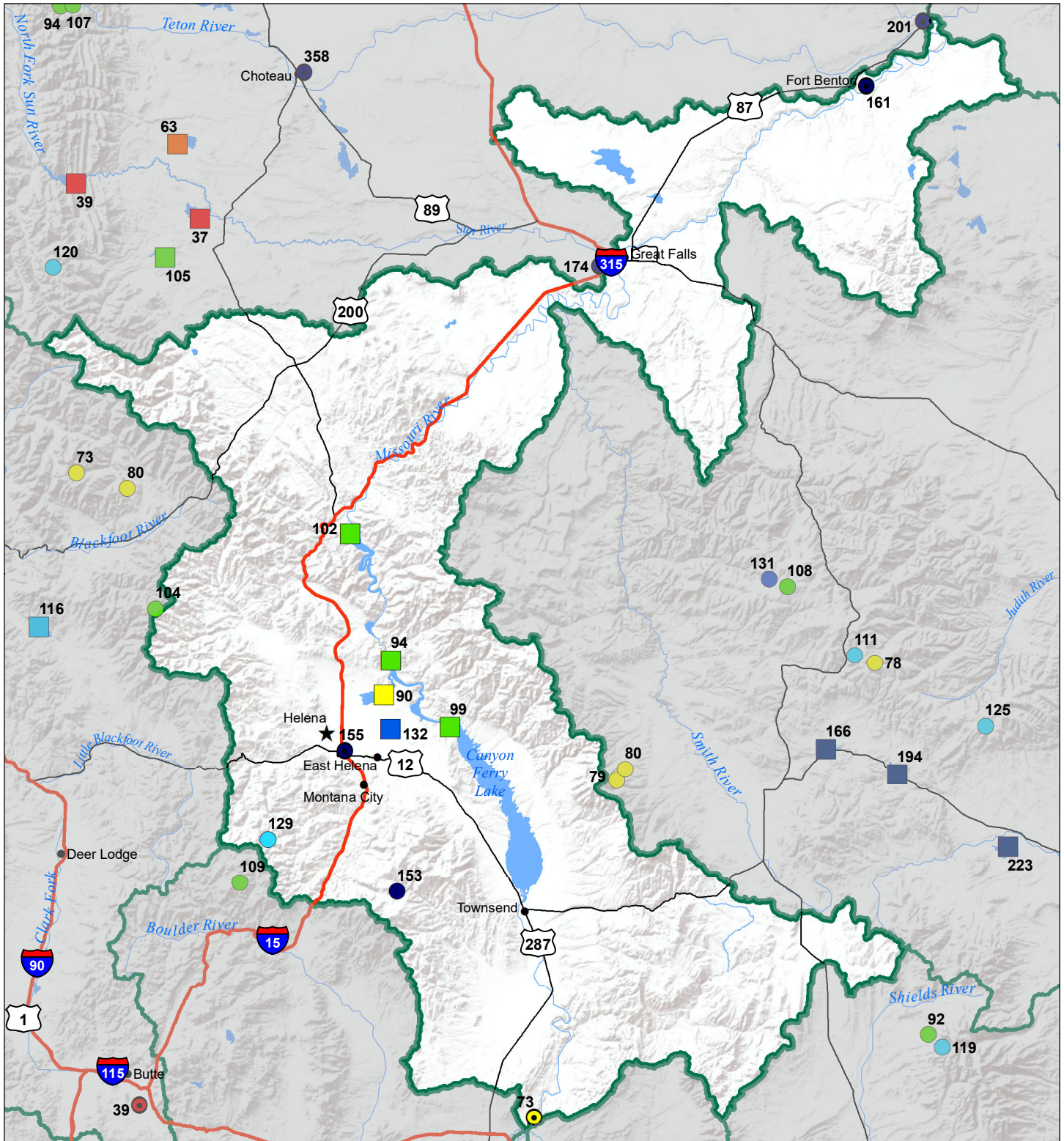
### Reservoirs Percent of Normal

■ > 150%
■ 131 - 150%
■ 111 - 130%
■ 91 - 110%
■ 71 - 90%
■ 51 - 70%
■ 1 - 50%





# Headwaters Mainstem (Missouri) River Basin Water Year to Date Precipitation and Reservoir Levels Percentage of Normal December 1, 2019



### Precipitation Percent of Normal

SNOTEL		COOP/ACIS	
● > 150%	● 71 - 90%	● > 150%	● 71 - 90%
● 131 - 150%	● 51 - 70%	● 131 - 150%	● 51 - 70%
● 111 - 130%	● 1 - 50%	● 111 - 130%	● 1 - 50%
● 91 - 110%		● 91 - 110%	

### Reservoirs Percent of Normal

■ > 150%
■ 131 - 150%
■ 111 - 130%
■ 91 - 110%
■ 71 - 90%
■ 51 - 70%
■ 1 - 50%

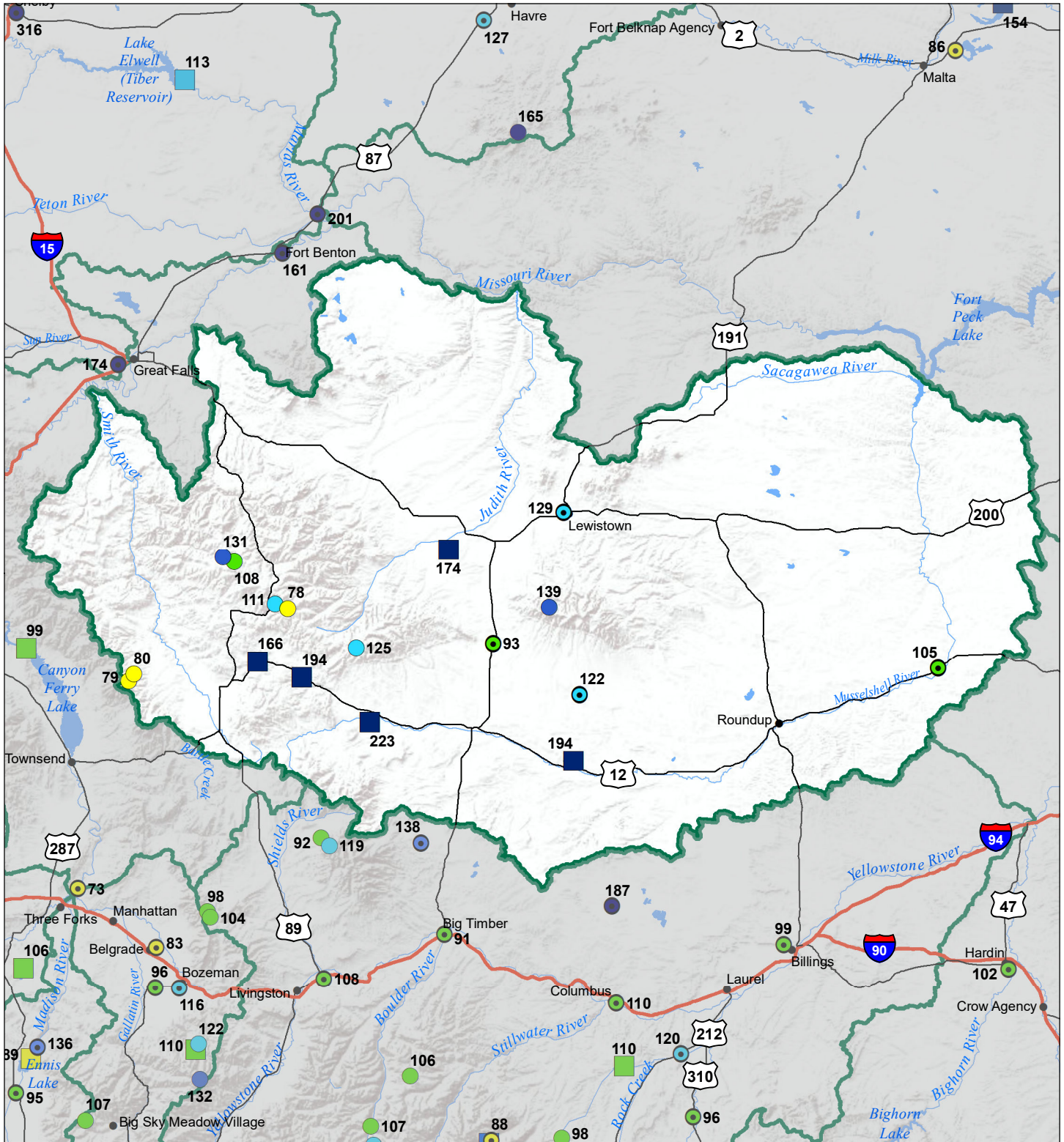


# Smith-Judith-Musselshell River Basin

## Water Year to Date Precipitation and Reservoir Levels

### Percentage of Normal

#### December 1, 2019



### Precipitation Percent of Normal

#### SNOTEL

- > 150%
- 131 - 150%
- 111 - 130%
- 91 - 110%
- 71 - 90%
- 51 - 70%
- 1 - 50%

#### COOP/ACIS

- > 150%
- 131 - 150%
- 111 - 130%
- 91 - 110%
- 71 - 90%
- 51 - 70%
- 1 - 50%

### Reservoirs Percent of Normal

- > 150%
- 131 - 150%
- 111 - 130%
- 91 - 110%
- 71 - 90%
- 51 - 70%
- 1 - 50%

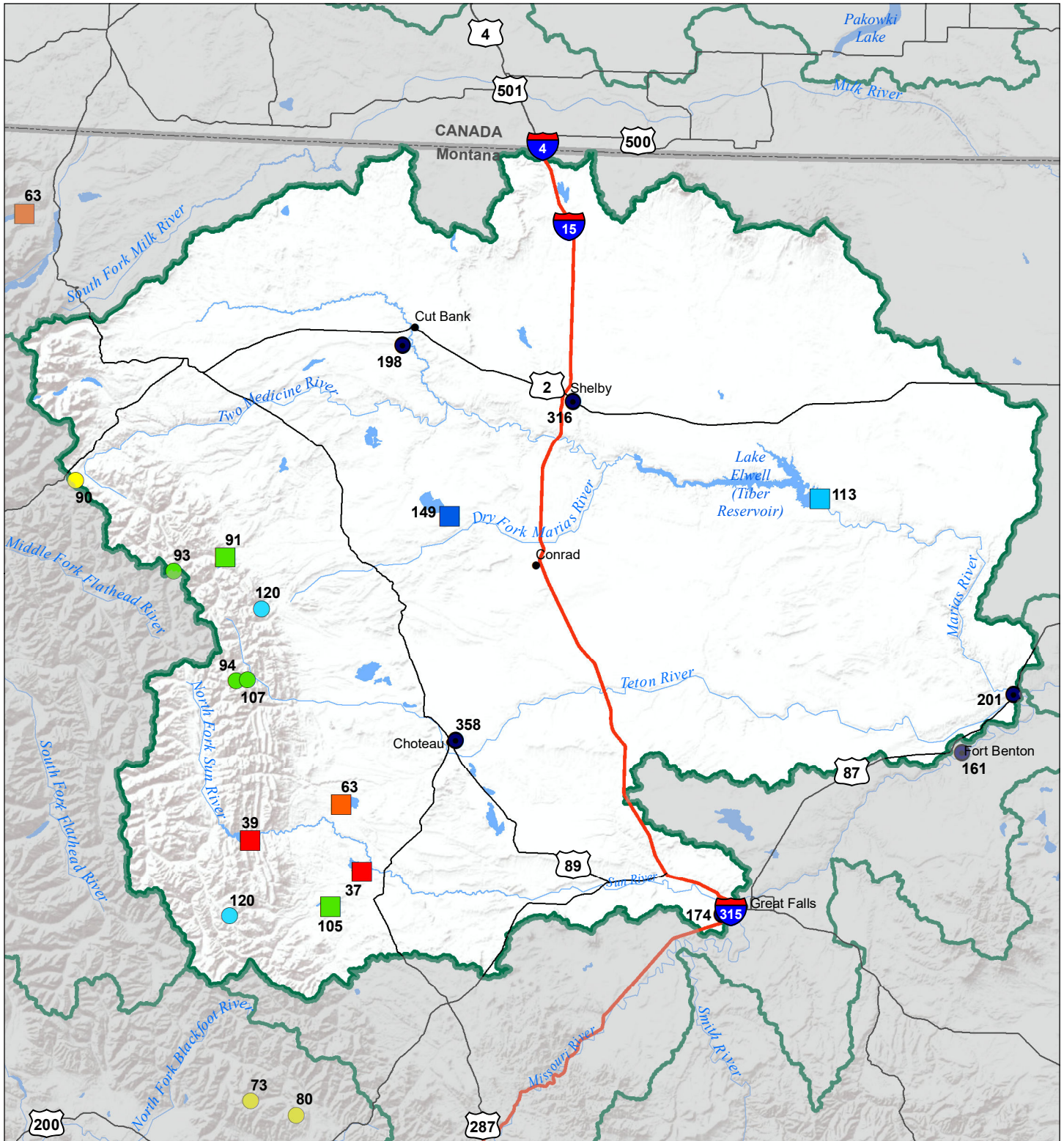


# Sun-Teton-Marias River Basin

## Water Year to Date Precipitation and Reservoir Levels

### Percentage of Normal

#### December 1, 2019



### Precipitation Percent of Normal

SNOTEL		COOP/ACIS	
● > 150%	● 71 - 90%	● > 150%	● 71 - 90%
● 131 - 150%	● 51 - 70%	● 131 - 150%	● 51 - 70%
● 111 - 130%	● 1 - 50%	● 111 - 130%	● 1 - 50%
● 91 - 110%		● 91 - 110%	

### Reservoirs Percent of Normal

■ > 150%
■ 131 - 150%
■ 111 - 130%
■ 91 - 110%
■ 71 - 90%
■ 51 - 70%
■ 1 - 50%

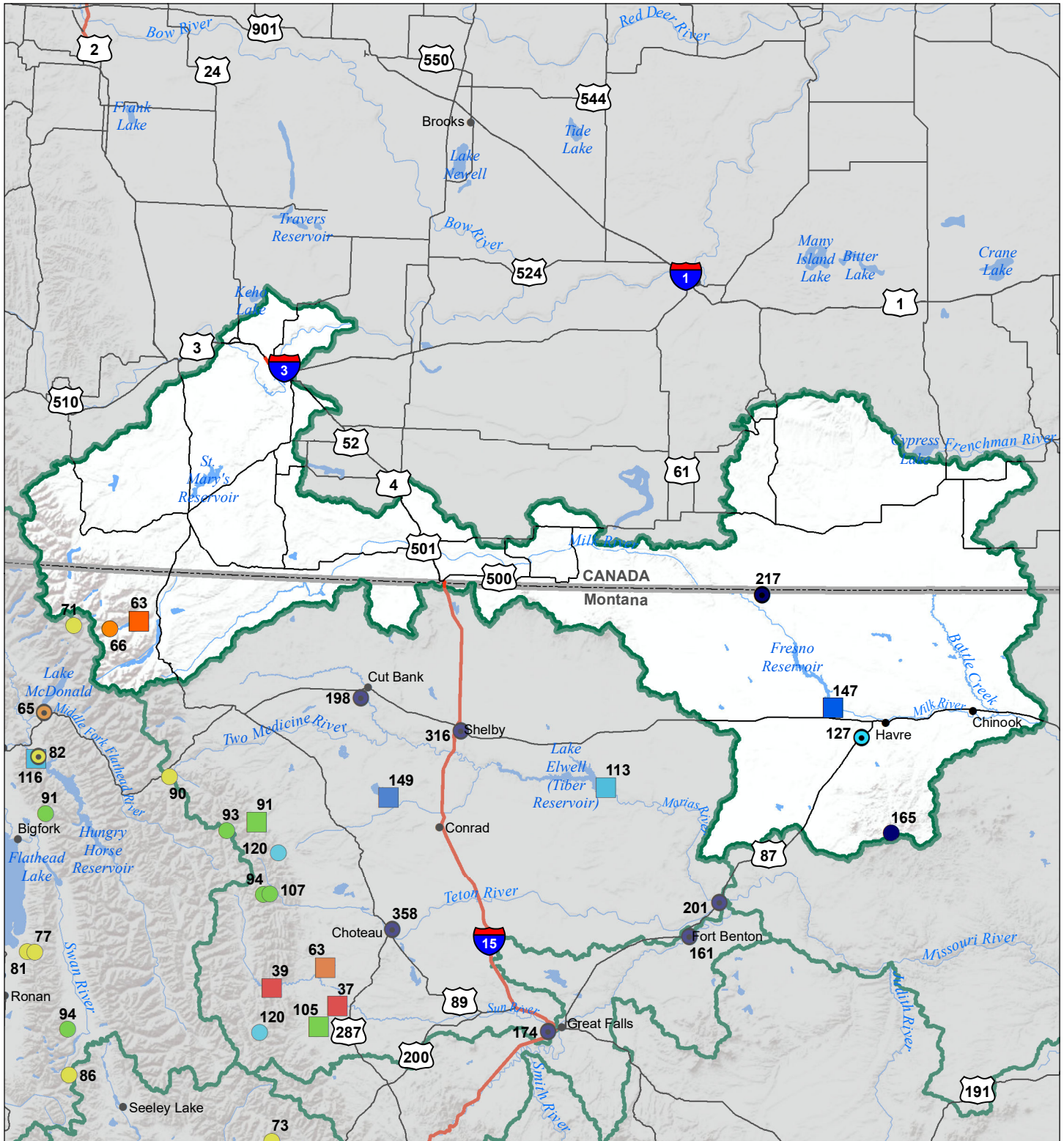


# St Mary's-Milk River Basin

## Water Year to Date Precipitation and Reservoir Levels

### Percentage of Normal

#### December 1, 2019



### Precipitation Percent of Normal

#### SNOTEL

- > 150%
- 131 - 150%
- 111 - 130%
- 91 - 110%
- 71 - 90%
- 51 - 70%
- 1 - 50%

#### COOP/ACIS

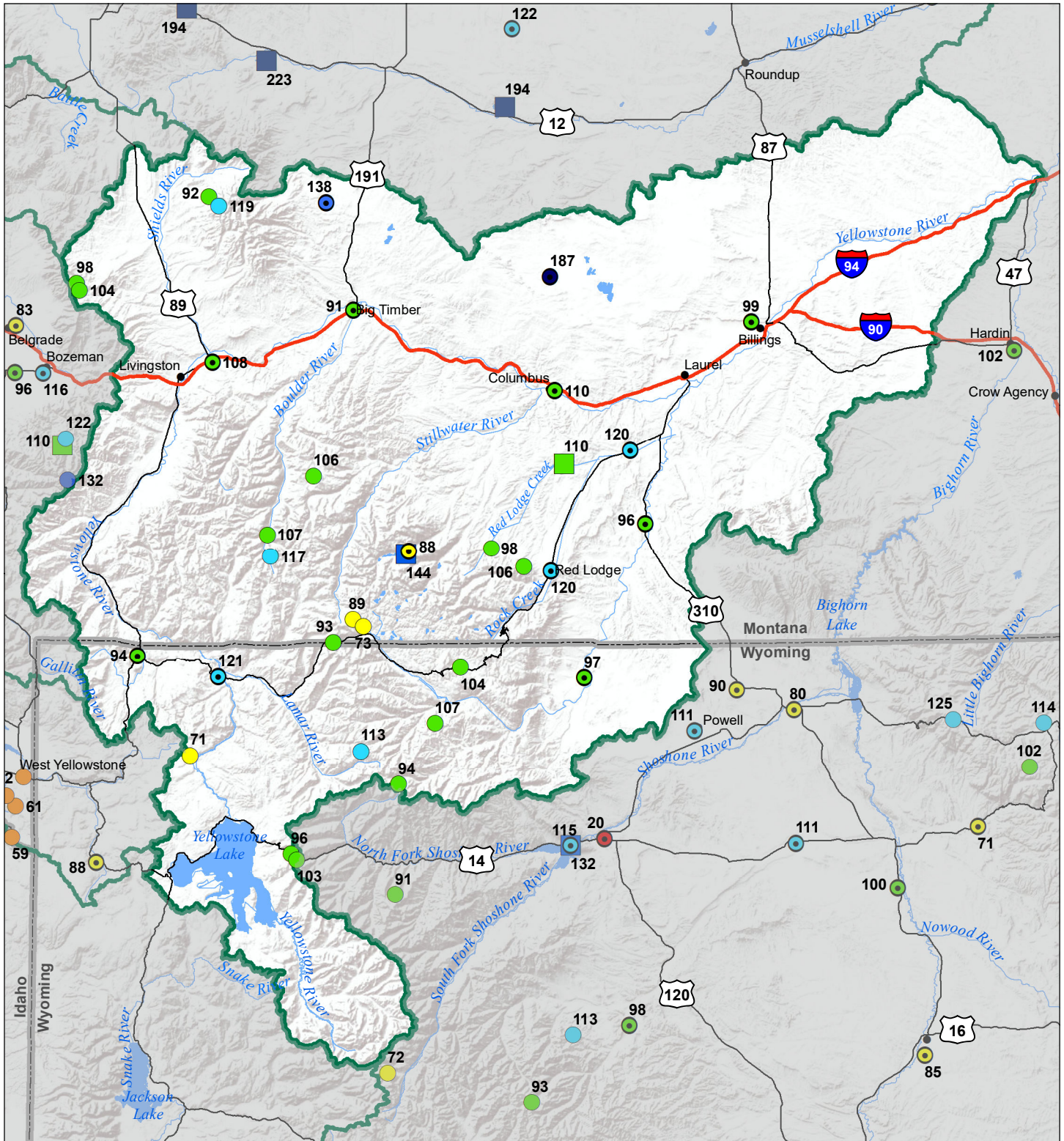
- > 150%
- 131 - 150%
- 111 - 130%
- 91 - 110%
- 71 - 90%
- 51 - 70%
- 1 - 50%

### Reservoirs Percent of Normal

- > 150%
- 131 - 150%
- 111 - 130%
- 91 - 110%
- 71 - 90%
- 51 - 70%
- 1 - 50%



# Upper Yellowstone River Basin Water Year to Date Precipitation and Reservoir Levels Percentage of Normal December 1, 2019

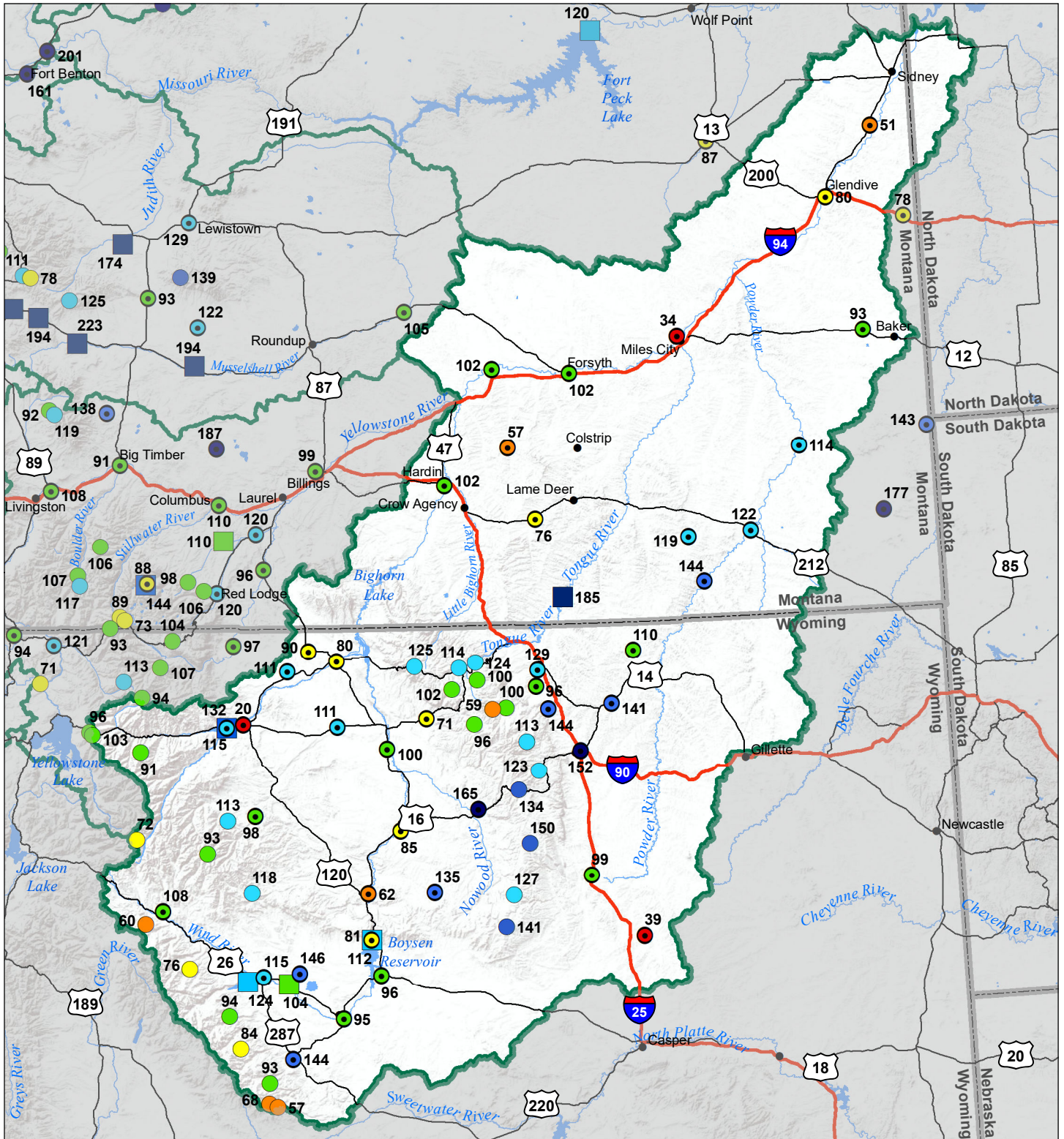


Precipitation Percent of Normal			
SNOTEL		COOP/ACIS	
<span style="color: blue;">●</span> > 150%	<span style="color: yellow;">●</span> 71 - 90%	<span style="color: blue;">●</span> > 150%	<span style="color: yellow;">●</span> 71 - 90%
<span style="color: lightblue;">●</span> 131 - 150%	<span style="color: orange;">●</span> 51 - 70%	<span style="color: lightblue;">●</span> 131 - 150%	<span style="color: orange;">●</span> 51 - 70%
<span style="color: cyan;">●</span> 111 - 130%	<span style="color: red;">●</span> 1 - 50%	<span style="color: cyan;">●</span> 111 - 130%	<span style="color: red;">●</span> 1 - 50%
<span style="color: green;">●</span> 91 - 110%		<span style="color: green;">●</span> 91 - 110%	

Reservoirs Percent of Normal	
<span style="color: darkblue;">■</span>	> 150%
<span style="color: blue;">■</span>	131 - 150%
<span style="color: lightblue;">■</span>	111 - 130%
<span style="color: green;">■</span>	91 - 110%
<span style="color: yellow;">■</span>	71 - 90%
<span style="color: orange;">■</span>	51 - 70%
<span style="color: red;">■</span>	1 - 50%



# Lower Yellowstone River Basin Water Year to Date Precipitation and Reservoir Levels Percentage of Normal December 1, 2019



Precipitation Percent of Normal	
SNOTEL	COOP/ACIS
● > 150%	● > 150%
● 131 - 150%	● 131 - 150%
● 111 - 130%	● 111 - 130%
● 91 - 110%	● 91 - 110%
● 71 - 90%	● 71 - 90%
● 51 - 70%	● 51 - 70%
● 1 - 50%	● 1 - 50%

Reservoirs Percent of Normal	
■ > 150%	■ 131 - 150%
■ 111 - 130%	■ 91 - 110%
■ 71 - 90%	■ 51 - 70%
■ 1 - 50%	

