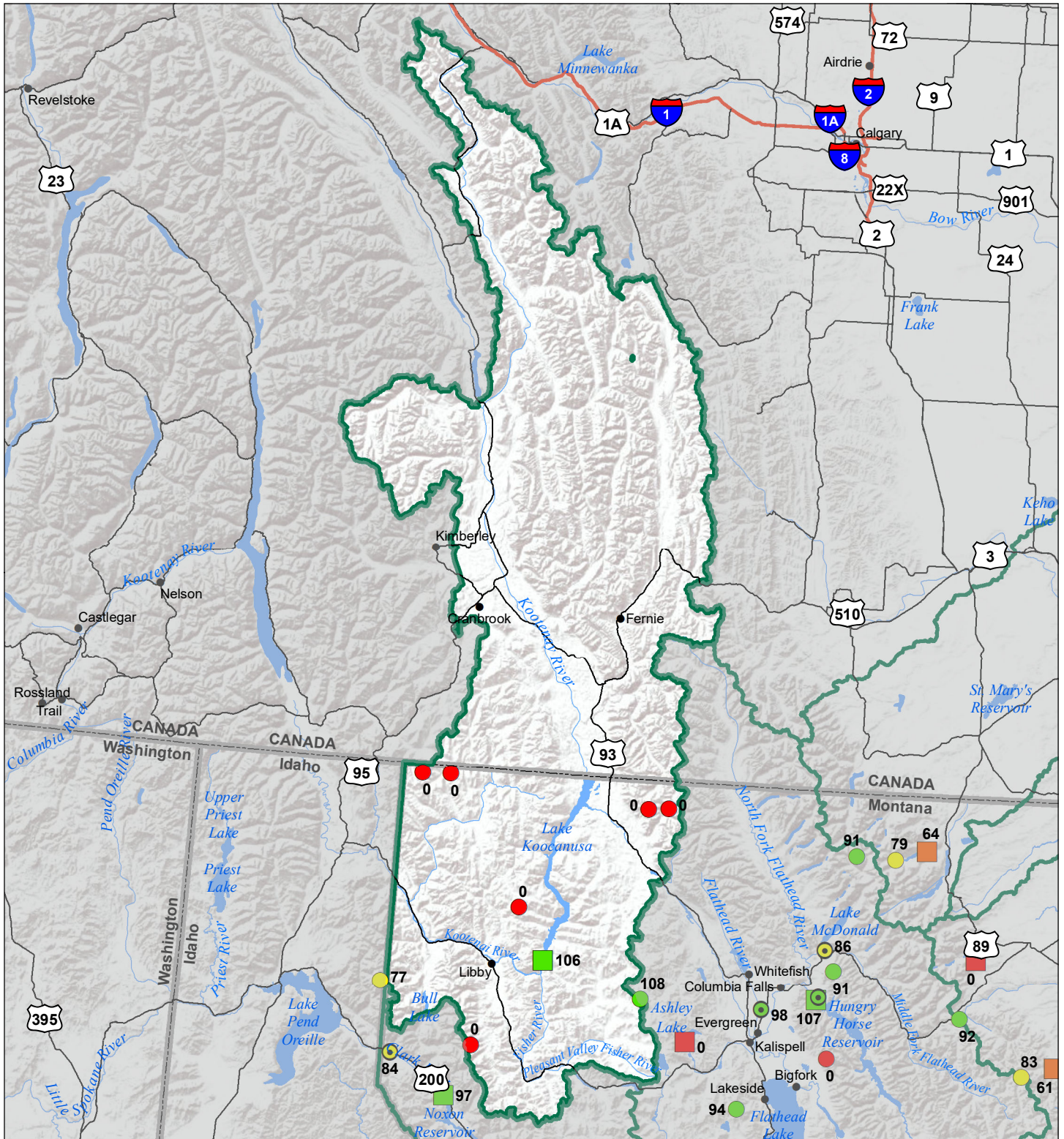


# Kootenai River Basin Water Year to Date Precipitation and Reservoir Levels Percentage of Normal October 1, 2021



### Precipitation Percent of Normal

| SNOTEL       |            | COOP/ACIS    |            |
|--------------|------------|--------------|------------|
| ● > 150%     | ● 71 - 90% | ● > 150%     | ● 71 - 90% |
| ● 131 - 150% | ● 51 - 70% | ● 131 - 150% | ● 51 - 70% |
| ● 111 - 130% | ● 1 - 50%  | ● 111 - 130% | ● 1 - 50%  |
| ● 91 - 110%  |            | ● 91 - 110%  |            |

### Reservoirs Percent of Normal

|              |
|--------------|
| ■ > 150%     |
| ■ 131 - 150% |
| ■ 111 - 130% |
| ■ 91 - 110%  |
| ■ 71 - 90%   |
| ■ 51 - 70%   |
| ■ 1 - 50%    |

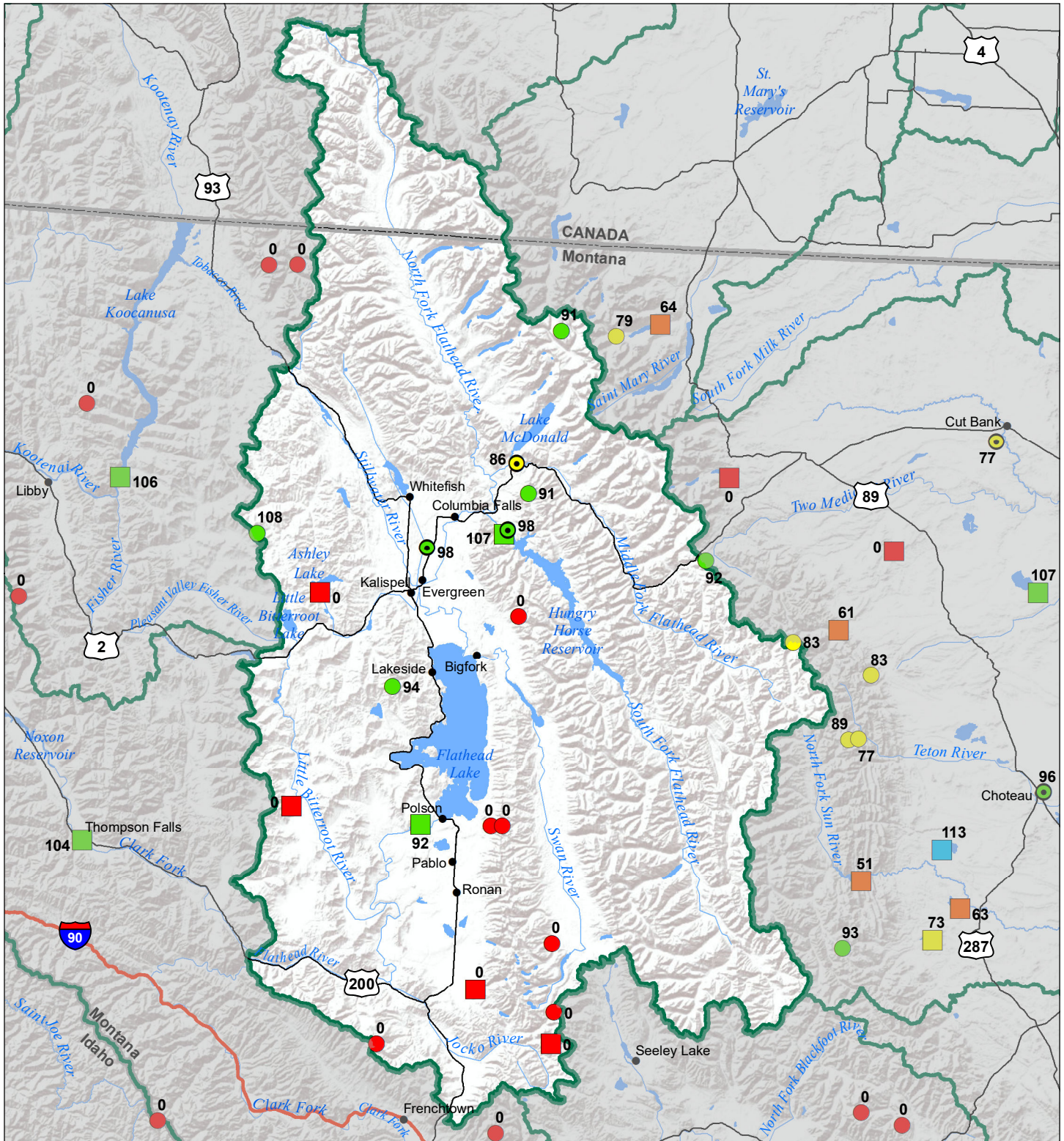


# Flathead River Basin

## Water Year to Date Precipitation and Reservoir Levels

### Percentage of Normal

#### October 1, 2021



### Precipitation Percent of Normal

| SNOTEL       |            | COOP/ACIS    |            |
|--------------|------------|--------------|------------|
| ● > 150%     | ● 71 - 90% | ● > 150%     | ● 71 - 90% |
| ● 131 - 150% | ● 51 - 70% | ● 131 - 150% | ● 51 - 70% |
| ● 111 - 130% | ● 1 - 50%  | ● 111 - 130% | ● 1 - 50%  |
| ● 91 - 110%  |            | ● 91 - 110%  |            |

### Reservoirs Percent of Normal

|              |
|--------------|
| ■ > 150%     |
| ■ 131 - 150% |
| ■ 111 - 130% |
| ■ 91 - 110%  |
| ■ 71 - 90%   |
| ■ 51 - 70%   |
| ■ 1 - 50%    |

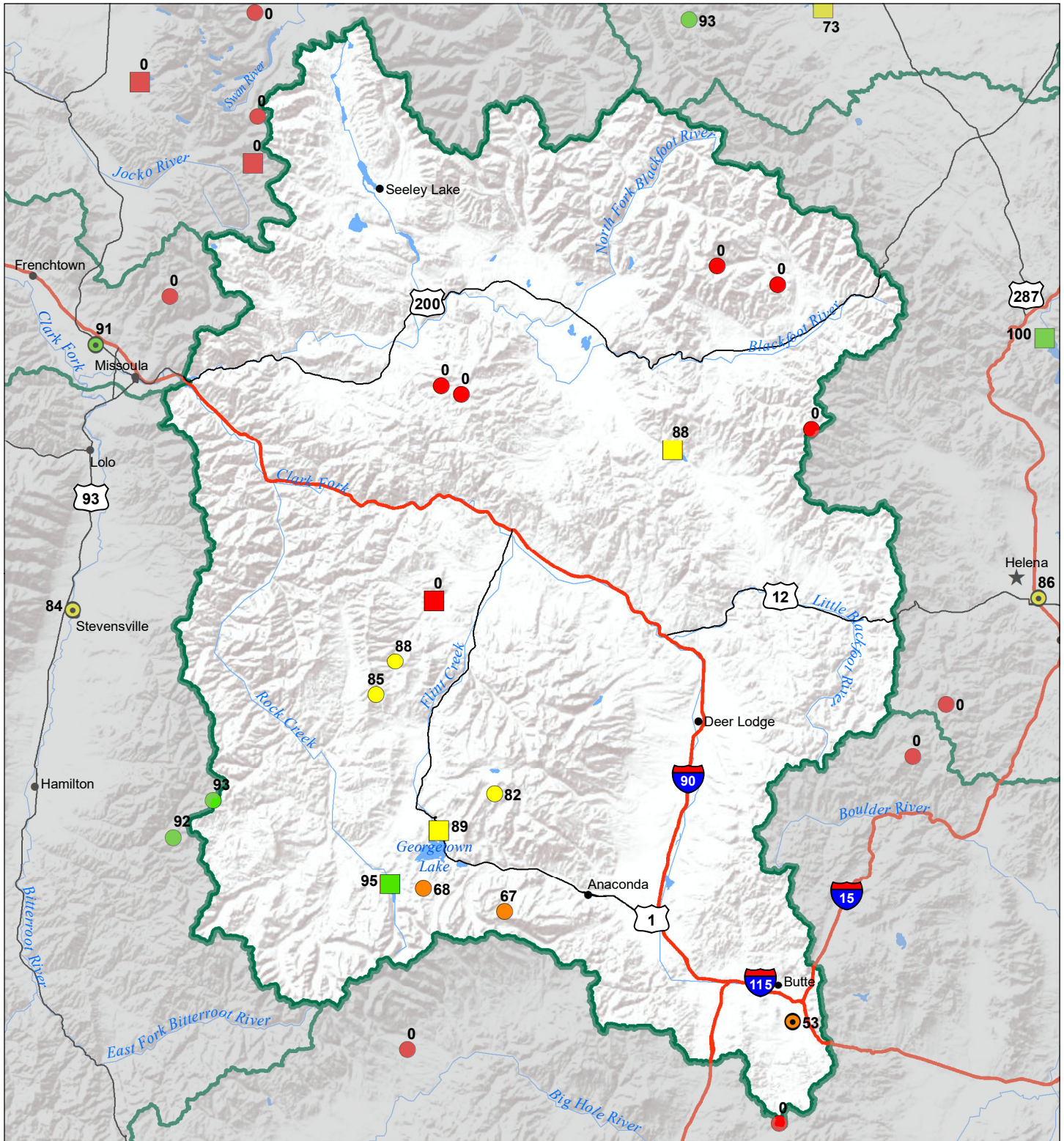


# Upper Clark Fork River Basin

## Water Year to Date Precipitation and Reservoir Levels

### Percentage of Normal

#### October 1, 2021



### Precipitation Percent of Normal

#### SNOTEL

- > 150%
- 131 - 150%
- 111 - 130%
- 91 - 110%
- 71 - 90%
- 51 - 70%
- 1 - 50%

#### COOP/ACIS

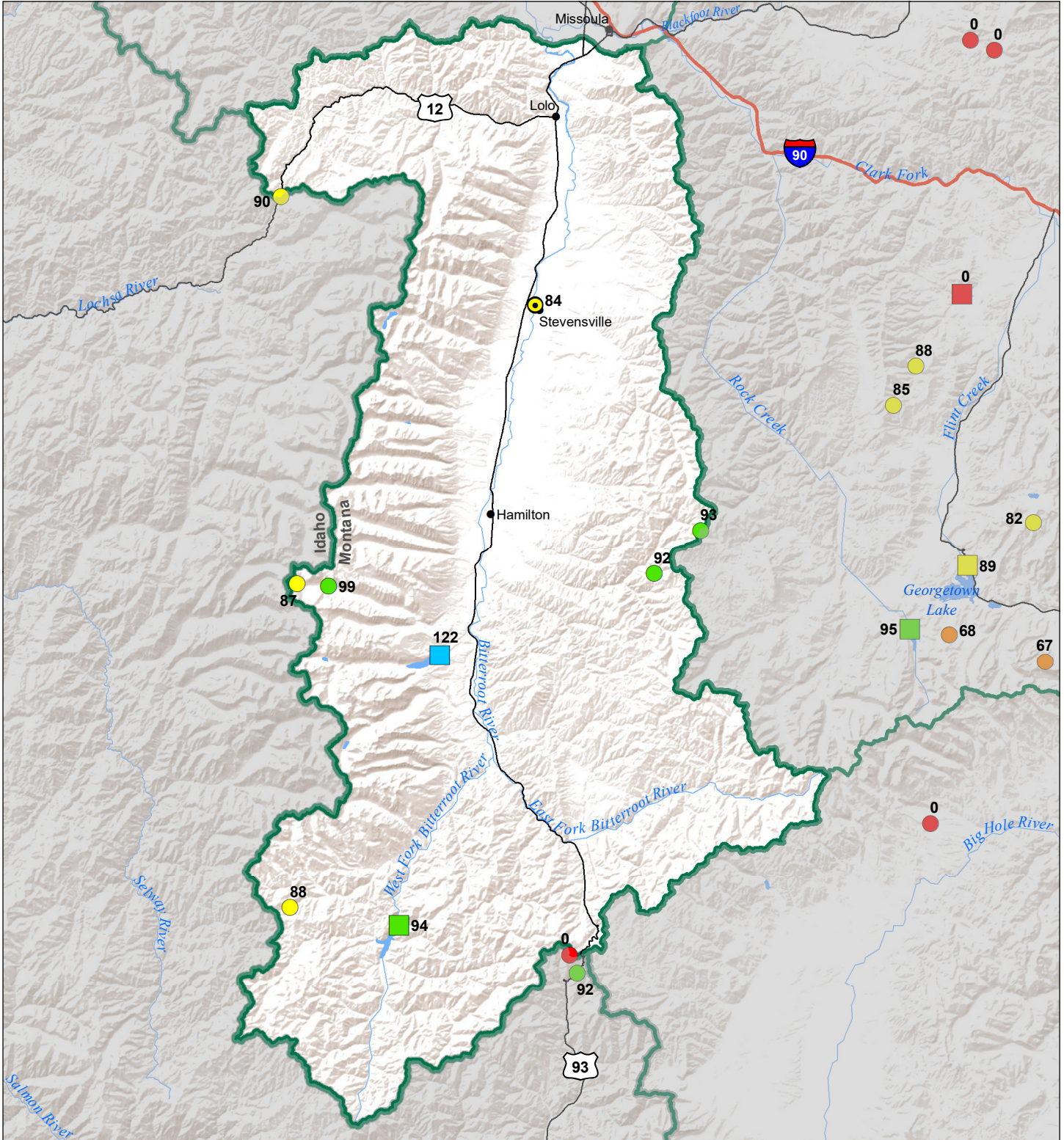
- > 150%
- 131 - 150%
- 111 - 130%
- 91 - 110%
- 71 - 90%
- 51 - 70%
- 1 - 50%

### Reservoirs Percent of Normal

- > 150%
- 131 - 150%
- 111 - 130%
- 91 - 110%
- 71 - 90%
- 51 - 70%
- 1 - 50%



# Bitterroot River Basin Water Year to Date Precipitation and Reservoir Levels Percentage of Normal October 1, 2021



### Precipitation Percent of Normal

| SNOTEL       |            | COOP/ACIS    |            |
|--------------|------------|--------------|------------|
| ● > 150%     | ● 71 - 90% | ● > 150%     | ● 71 - 90% |
| ● 131 - 150% | ● 51 - 70% | ● 131 - 150% | ● 51 - 70% |
| ● 111 - 130% | ● 1 - 50%  | ● 111 - 130% | ● 1 - 50%  |
| ● 91 - 110%  |            | ● 91 - 110%  |            |

### Reservoirs Percent of Normal

|              |
|--------------|
| ■ > 150%     |
| ■ 131 - 150% |
| ■ 111 - 130% |
| ■ 91 - 110%  |
| ■ 71 - 90%   |
| ■ 51 - 70%   |
| ■ 1 - 50%    |

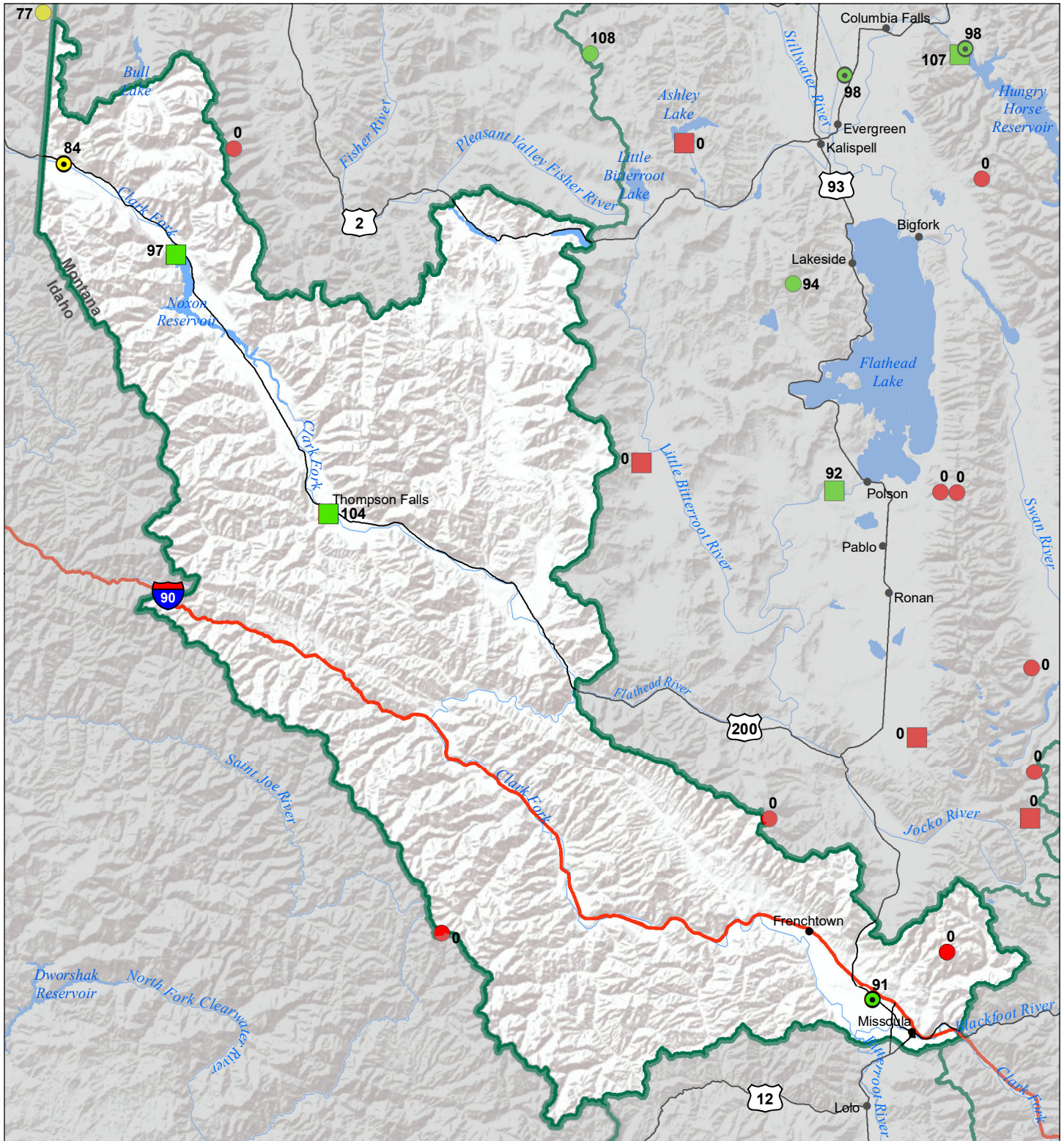


# Lower Clark Fork River Basin

## Water Year to Date Precipitation and Reservoir Levels

### Percentage of Normal

#### October 1, 2021

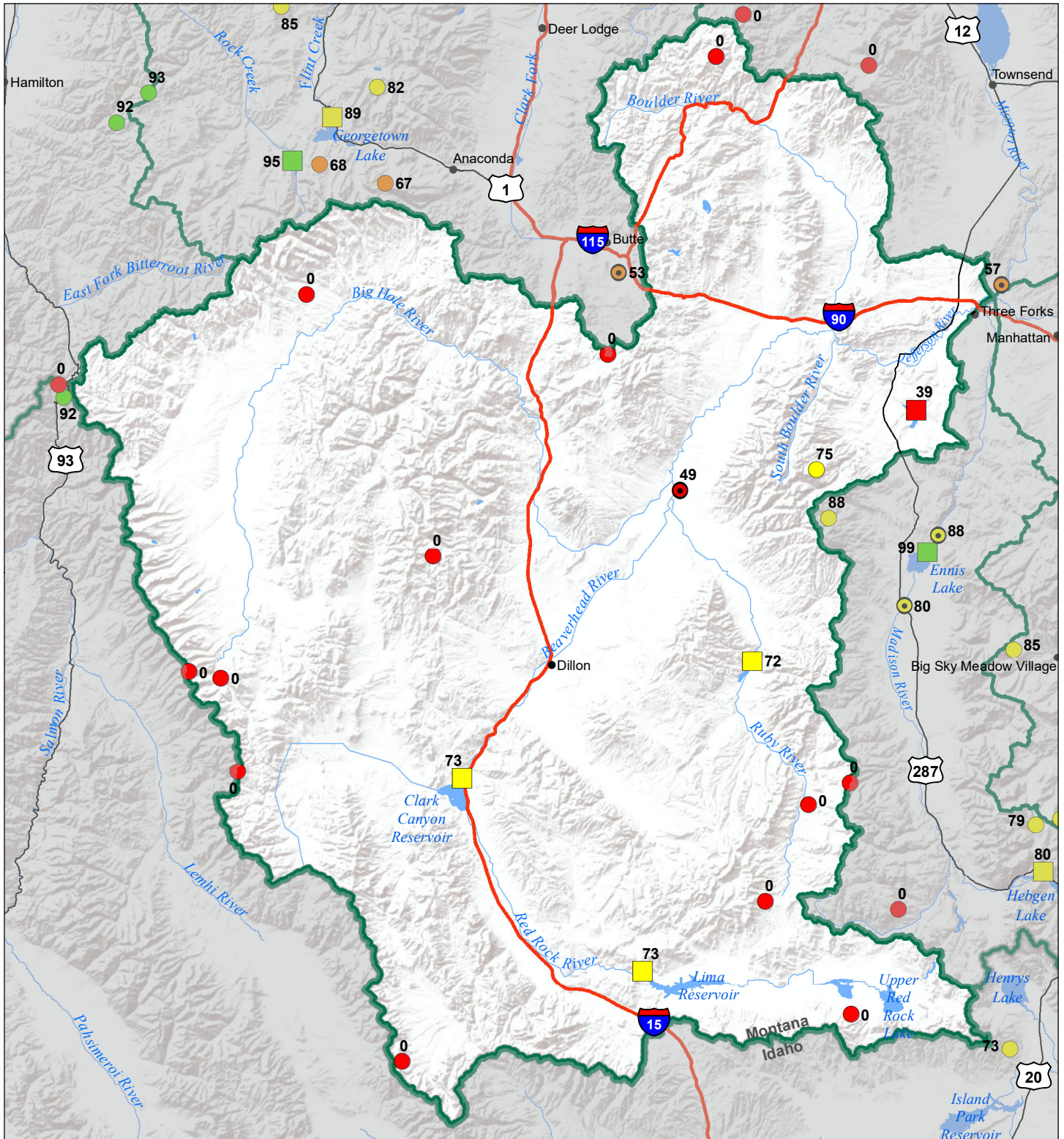


| Precipitation<br>Percent of Normal                  |  | COOP/ACIS   |  |
|---|--|---|--|
| SNOTEL  |  |   |  |
| <span style="color: blue;">●</span> > 150%          | <span style="color: yellow;">●</span> 71 - 90% | <span style="color: blue;">●</span> > 150%          | <span style="color: yellow;">●</span> 71 - 90% |
| <span style="color: lightblue;">●</span> 131 - 150% | <span style="color: orange;">●</span> 51 - 70% | <span style="color: lightblue;">●</span> 131 - 150% | <span style="color: orange;">●</span> 51 - 70% |
| <span style="color: cyan;">●</span> 111 - 130%      | <span style="color: red;">●</span> 1 - 50%     | <span style="color: cyan;">●</span> 111 - 130%      | <span style="color: red;">●</span> 1 - 50%     |
| <span style="color: green;">●</span> 91 - 110%      |  | <span style="color: green;">●</span> 91 - 110%      |  |

| Reservoirs<br>Percent of Normal                     |  |
|---|--|
| <span style="color: darkblue;">■</span> > 150%      | <span style="color: blue;">■</span> 131 - 150% |
| <span style="color: lightblue;">■</span> 111 - 130% | <span style="color: green;">■</span> 91 - 110% |
| <span style="color: yellow;">■</span> 71 - 90%      | <span style="color: orange;">■</span> 51 - 70% |
| <span style="color: red;">■</span> 1 - 50%          |  |



# Jefferson River Basin Water Year to Date Precipitation and Reservoir Levels Percentage of Normal October 1, 2021

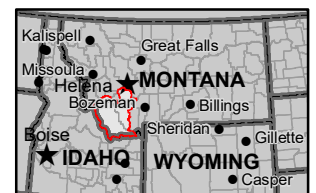


### Precipitation Percent of Normal

| SNOTEL       |            | COOP/ACIS    |            |
|--------------|------------|--------------|------------|
| ● > 150%     | ● 71 - 90% | ● > 150%     | ● 71 - 90% |
| ● 131 - 150% | ● 51 - 70% | ● 131 - 150% | ● 51 - 70% |
| ● 111 - 130% | ● 1 - 50%  | ● 111 - 130% | ● 1 - 50%  |
| ● 91 - 110%  |            | ● 91 - 110%  |            |

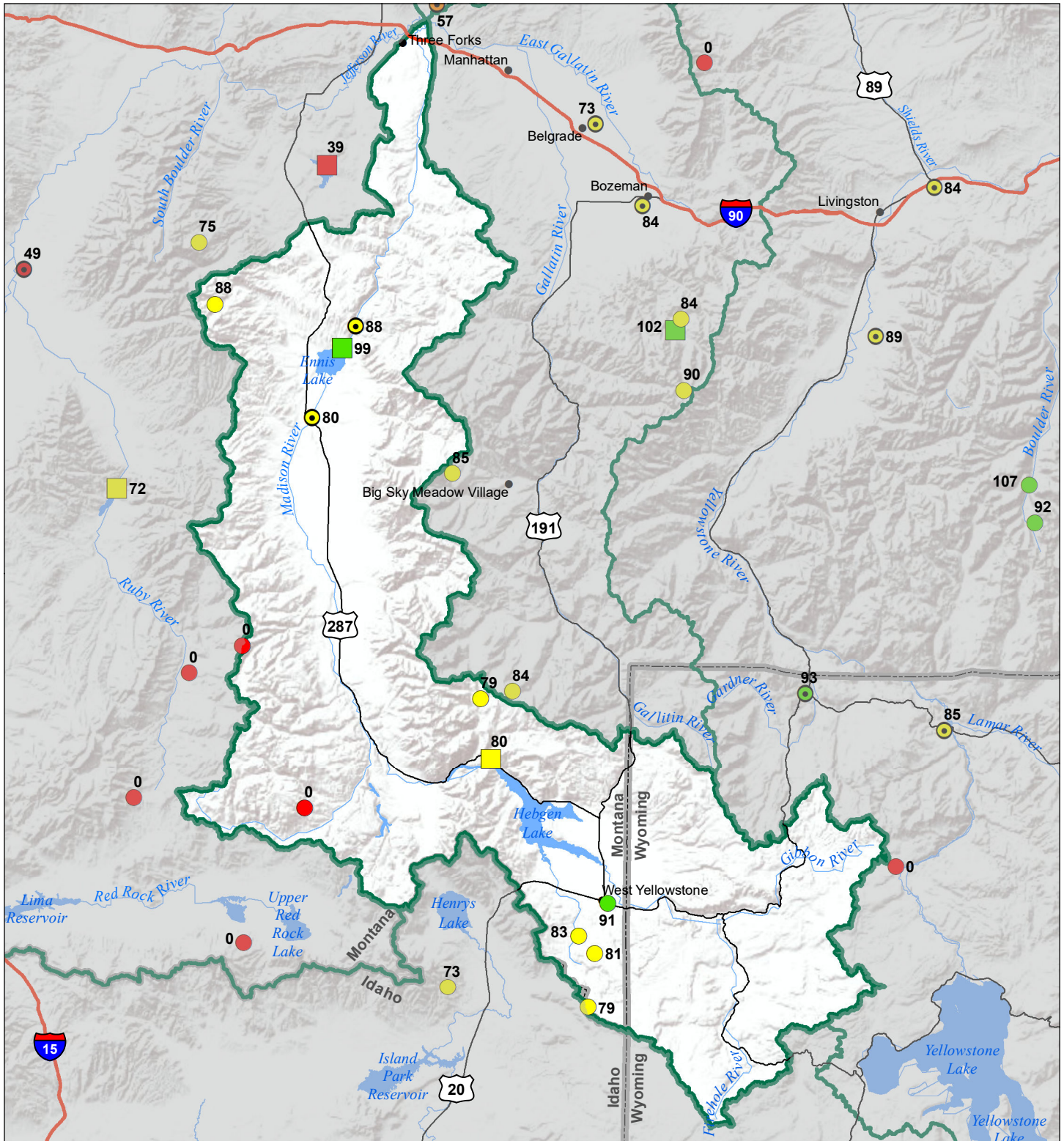
### Reservoirs Percent of Normal

|              |
|--------------|
| ■ > 150%     |
| ■ 131 - 150% |
| ■ 111 - 130% |
| ■ 91 - 110%  |
| ■ 71 - 90%   |
| ■ 51 - 70%   |
| ■ 1 - 50%    |



# Madison River Basin

## Water Year to Date Precipitation and Reservoir Levels Percentage of Normal October 1, 2021



### Precipitation Percent of Normal

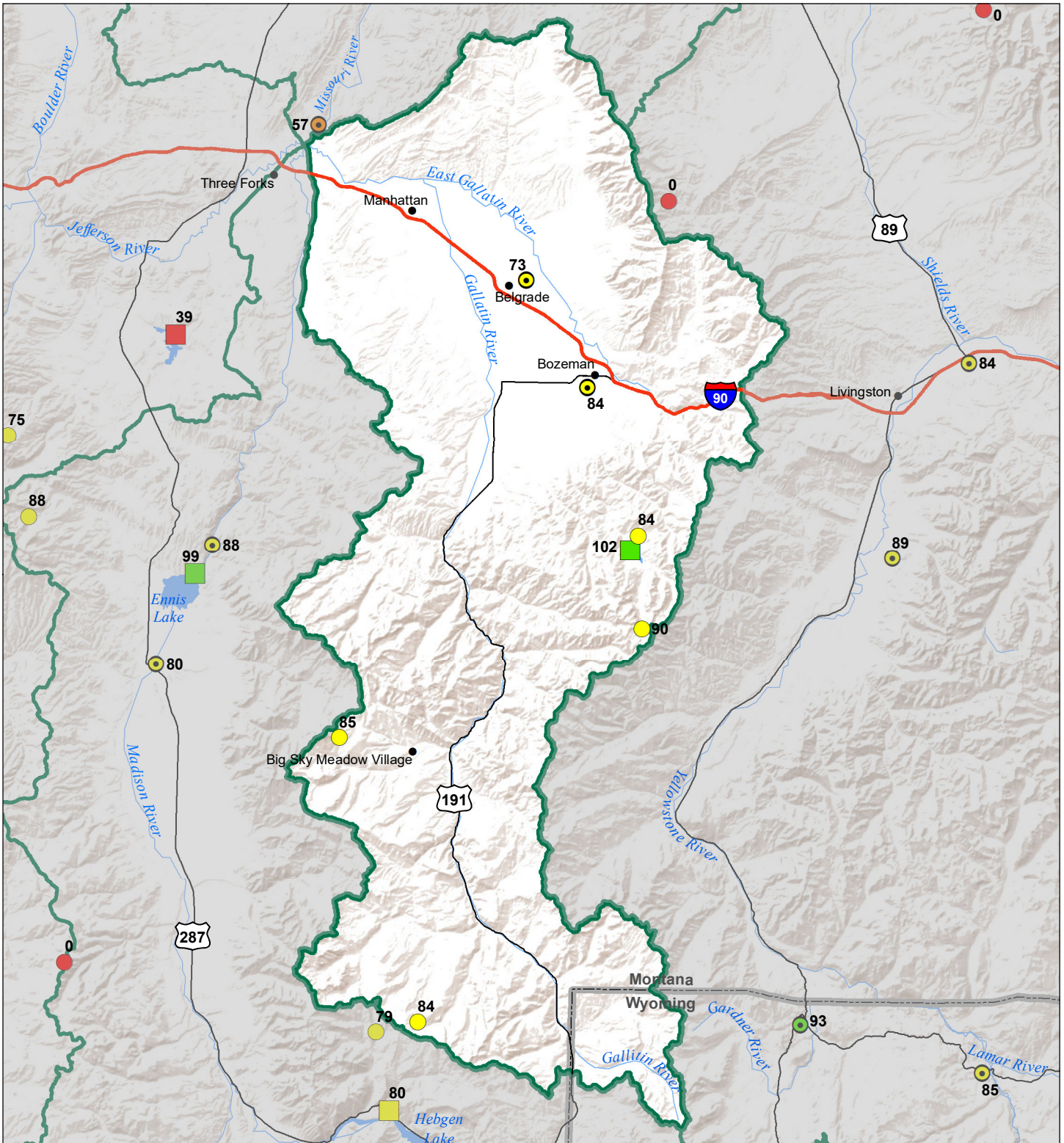
| SNOTEL      |            | COOP/ACIS   |            |
|-------------|------------|-------------|------------|
| Dark Blue   | > 150%     | Dark Blue   | > 150%     |
| Blue        | 131 - 150% | Blue        | 131 - 150% |
| Cyan        | 111 - 130% | Cyan        | 111 - 130% |
| Light Green | 91 - 110%  | Light Green | 91 - 110%  |
| Yellow      | 71 - 90%   | Yellow      | 71 - 90%   |
| Orange      | 51 - 70%   | Orange      | 51 - 70%   |
| Red         | 1 - 50%    | Red         | 1 - 50%    |

### Reservoirs Percent of Normal

|             |            |
|-------------|------------|
| Dark Blue   | > 150%     |
| Blue        | 131 - 150% |
| Cyan        | 111 - 130% |
| Light Green | 91 - 110%  |
| Yellow      | 71 - 90%   |
| Orange      | 51 - 70%   |
| Red         | 1 - 50%    |



# Gallatin River Basin Water Year to Date Precipitation and Reservoir Levels Percentage of Normal October 1, 2021



### Precipitation Percent of Normal

| SNOTEL       |            | COOP/ACIS    |            |
|--------------|------------|--------------|------------|
| ● > 150%     | ● 71 - 90% | ● > 150%     | ● 71 - 90% |
| ● 131 - 150% | ● 51 - 70% | ● 131 - 150% | ● 51 - 70% |
| ● 111 - 130% | ● 1 - 50%  | ● 111 - 130% | ● 1 - 50%  |
| ● 91 - 110%  |            | ● 91 - 110%  |            |

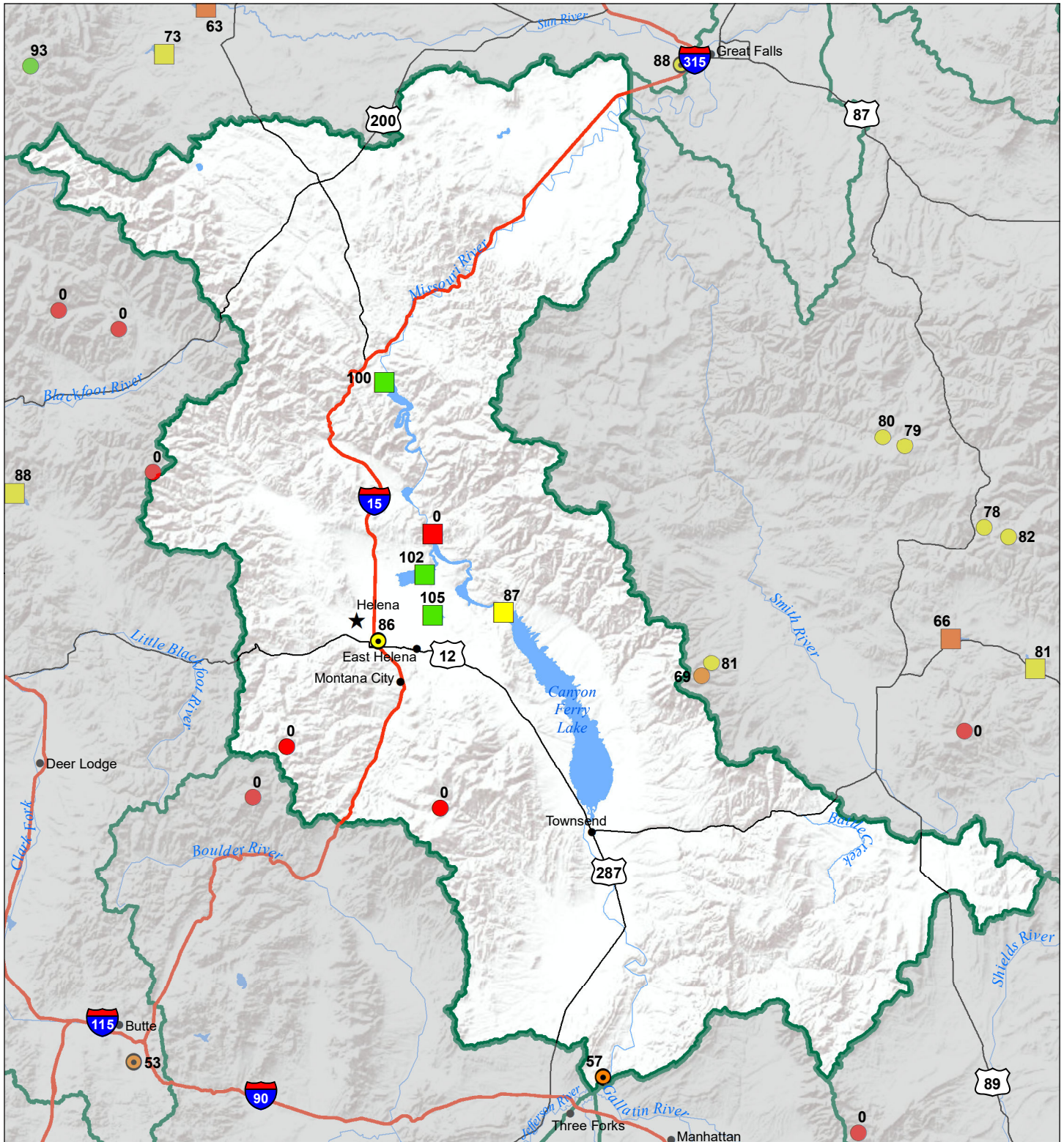
### Reservoirs Percent of Normal

|              |
|--------------|
| ■ > 150%     |
| ■ 131 - 150% |
| ■ 111 - 130% |
| ■ 91 - 110%  |
| ■ 71 - 90%   |
| ■ 51 - 70%   |
| ■ 1 - 50%    |





# Headwaters Mainstem River Basin Water Year to Date Precipitation and Reservoir Levels Percentage of Normal October 1, 2021



### Precipitation Percent of Normal

| SNOTEL  |  | COOP/ACIS   |  |
|---|--|---|--|
| <span style="color: blue;">●</span> > 150%          | <span style="color: yellow;">●</span> 71 - 90% | <span style="color: blue;">■</span> > 150%          | <span style="color: yellow;">■</span> 71 - 90% |
| <span style="color: lightblue;">●</span> 131 - 150% | <span style="color: orange;">●</span> 51 - 70% | <span style="color: lightblue;">■</span> 131 - 150% | <span style="color: orange;">■</span> 51 - 70% |
| <span style="color: cyan;">●</span> 111 - 130%      | <span style="color: red;">●</span> 1 - 50%     | <span style="color: cyan;">■</span> 111 - 130%      | <span style="color: red;">■</span> 1 - 50%     |
| <span style="color: green;">●</span> 91 - 110%      |  | <span style="color: green;">■</span> 91 - 110%      |  |

### Reservoirs Percent of Normal

|   |
|---|
| <span style="color: darkblue;">■</span> > 150%      |
| <span style="color: blue;">■</span> 131 - 150%      |
| <span style="color: lightblue;">■</span> 111 - 130% |
| <span style="color: green;">■</span> 91 - 110%      |
| <span style="color: yellow;">■</span> 71 - 90%      |
| <span style="color: orange;">■</span> 51 - 70%      |
| <span style="color: red;">■</span> 1 - 50%          |

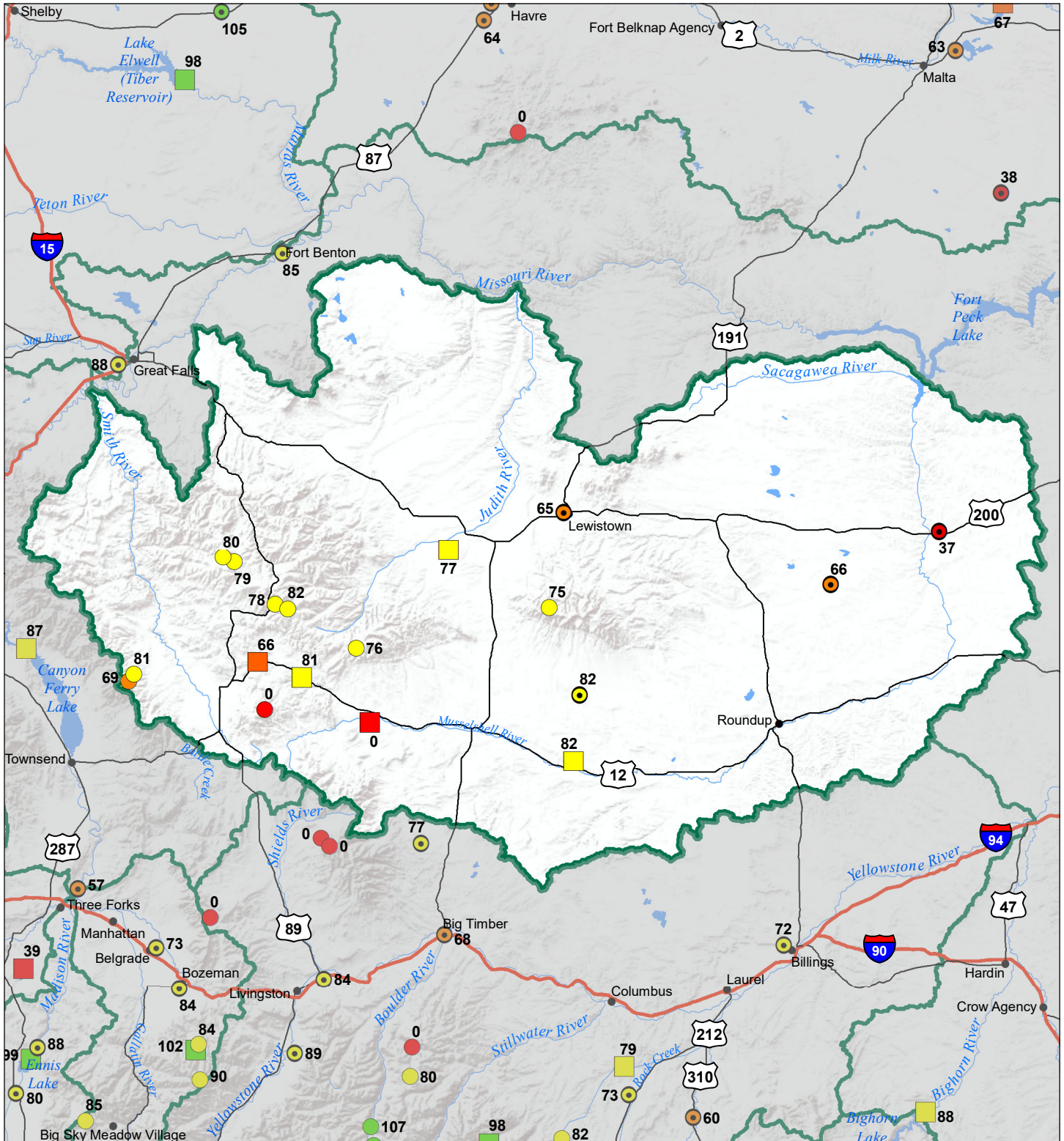


# Smith-Judith-Musselshell River Basin

## Water Year to Date Precipitation and Reservoir Levels

### Percentage of Normal

#### October 1, 2021



### Precipitation Percent of Normal

#### SNOTEL

- > 150%
- 131 - 150%
- 111 - 130%
- 91 - 110%
- 71 - 90%
- 51 - 70%
- 1 - 50%

#### COOP/ACIS

- > 150%
- 131 - 150%
- 111 - 130%
- 91 - 110%
- 71 - 90%
- 51 - 70%
- 1 - 50%

### Reservoirs Percent of Normal

- > 150%
- 131 - 150%
- 111 - 130%
- 91 - 110%
- 71 - 90%
- 51 - 70%
- 1 - 50%

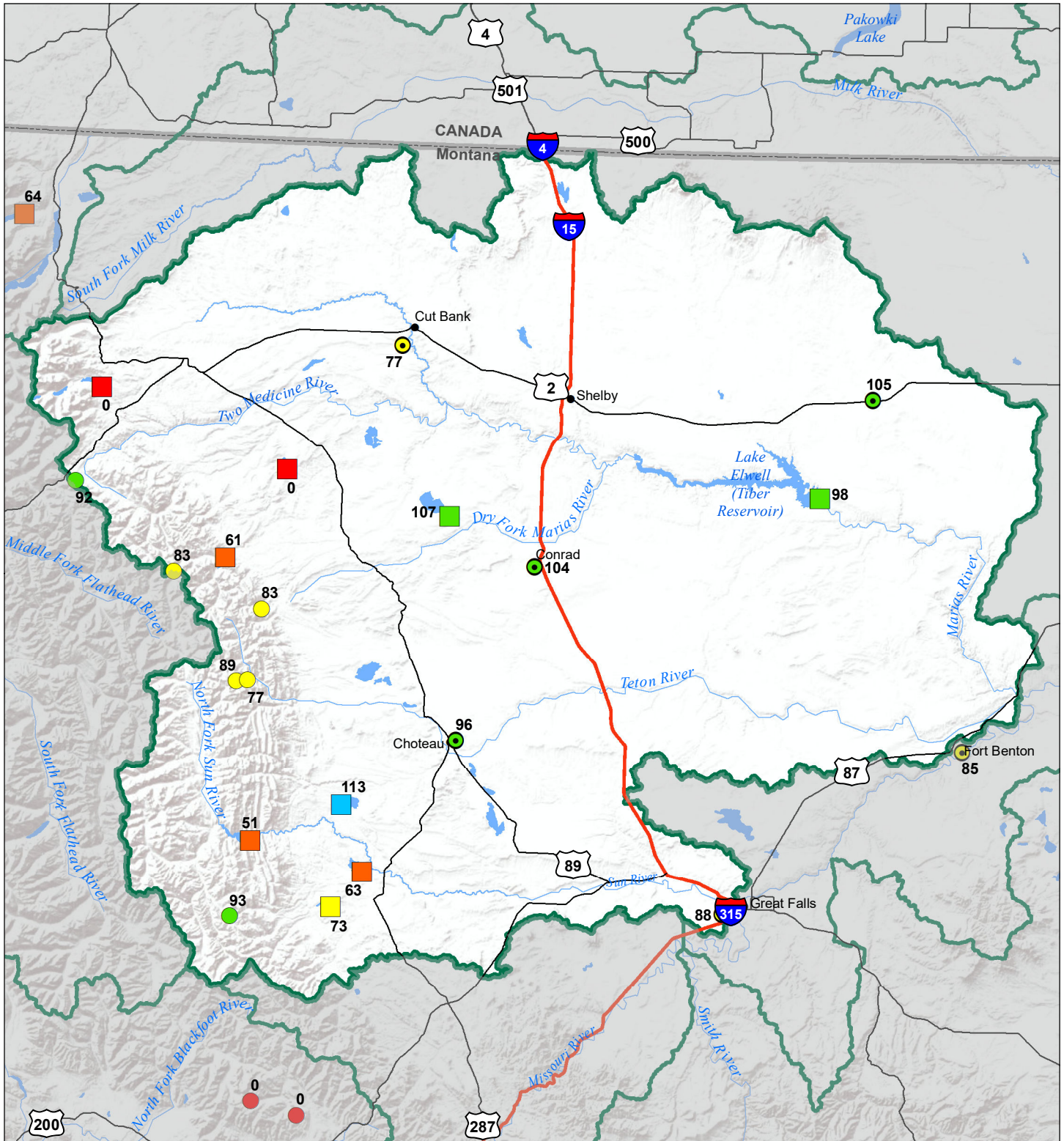


# Sun-Teton-Marias River Basin

## Water Year to Date Precipitation and Reservoir Levels

### Percentage of Normal

#### October 1, 2021



### Precipitation Percent of Normal

#### SNOTEL

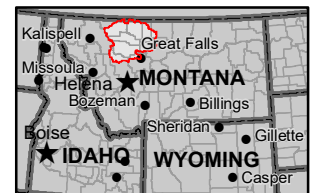
- > 150%
- 131 - 150%
- 111 - 130%
- 91 - 110%
- 71 - 90%
- 51 - 70%
- 1 - 50%

#### COOP/ACIS

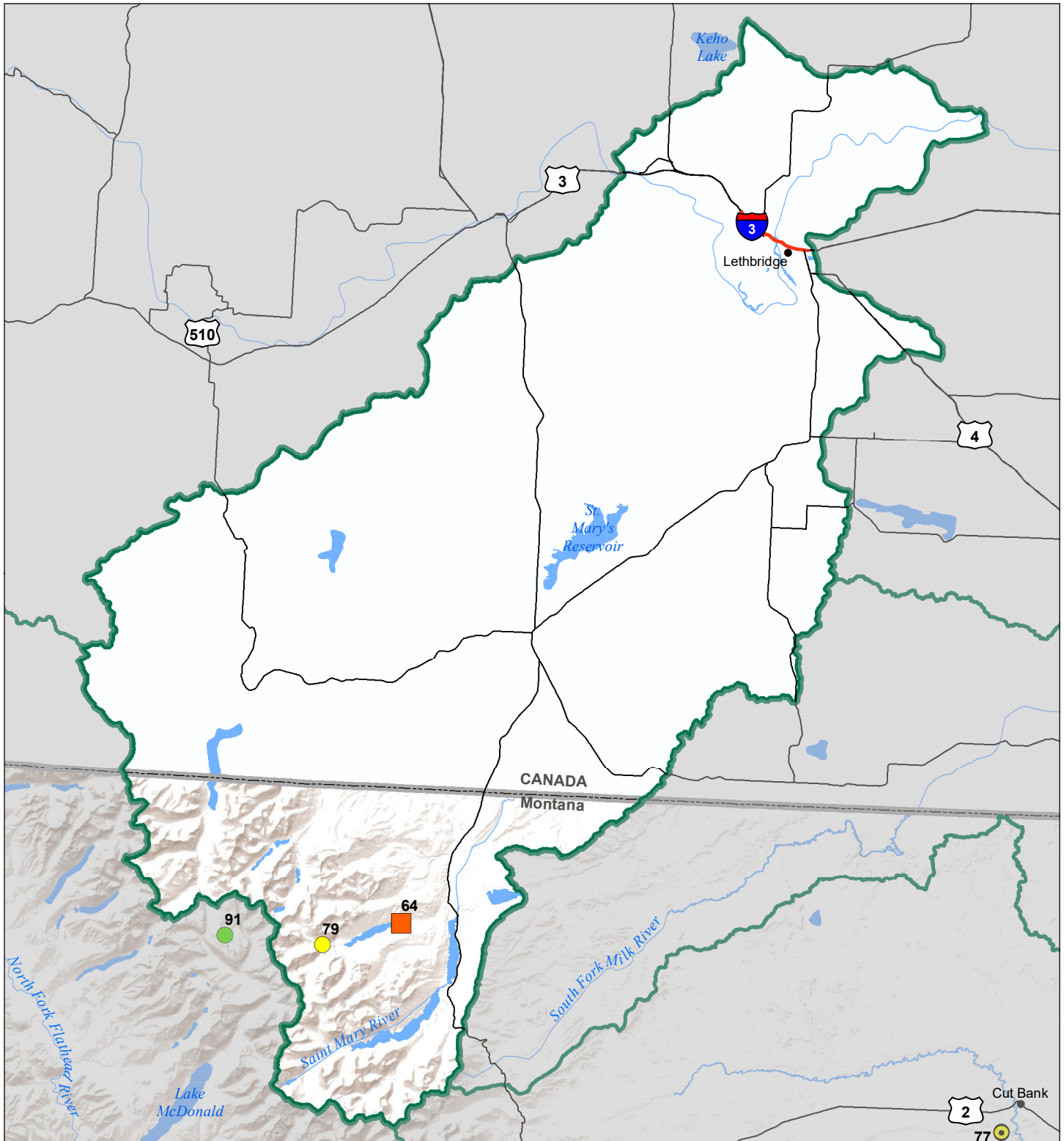
- > 150%
- 131 - 150%
- 111 - 130%
- 91 - 110%
- 71 - 90%
- 51 - 70%
- 1 - 50%

### Reservoirs Percent of Normal

- > 150%
- 131 - 150%
- 111 - 130%
- 91 - 110%
- 71 - 90%
- 51 - 70%
- 1 - 50%



# St Mary's River Basin Water Year to Date Precipitation and Reservoir Levels Percentage of Normal October 1, 2021



### Precipitation Percent of Normal

| SNOTEL       |            | COOP/ACIS    |            |
|--------------|------------|--------------|------------|
| ● > 150%     | ● 71 - 90% | ● > 150%     | ● 71 - 90% |
| ● 131 - 150% | ● 51 - 70% | ● 131 - 150% | ● 51 - 70% |
| ● 111 - 130% | ● 1 - 50%  | ● 111 - 130% | ● 1 - 50%  |
| ● 91 - 110%  |            | ● 91 - 110%  |            |

### Reservoirs Percent of Normal

|              |
|--------------|
| ■ > 150%     |
| ■ 131 - 150% |
| ■ 111 - 130% |
| ■ 91 - 110%  |
| ■ 71 - 90%   |
| ■ 51 - 70%   |
| ■ 1 - 50%    |

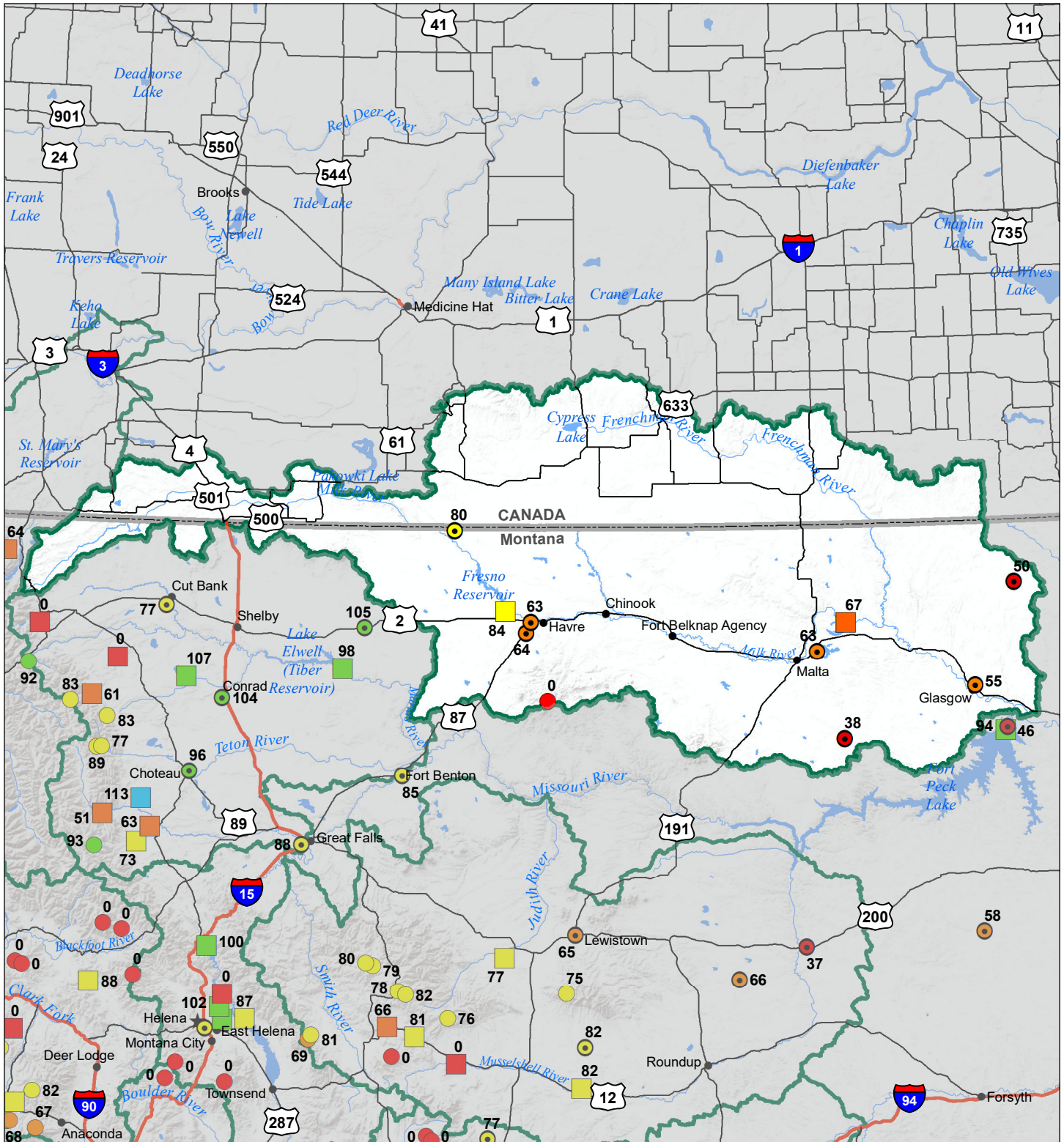


# Milk River Basin

## Water Year to Date Precipitation and Reservoir Levels

### Percentage of Normal

#### October 1, 2021



### Precipitation Percent of Normal

#### SNOTEL

- > 150%
- 131 - 150%
- 111 - 130%
- 91 - 110%
- 71 - 90%
- 51 - 70%
- 1 - 50%

#### COOP/ACIS

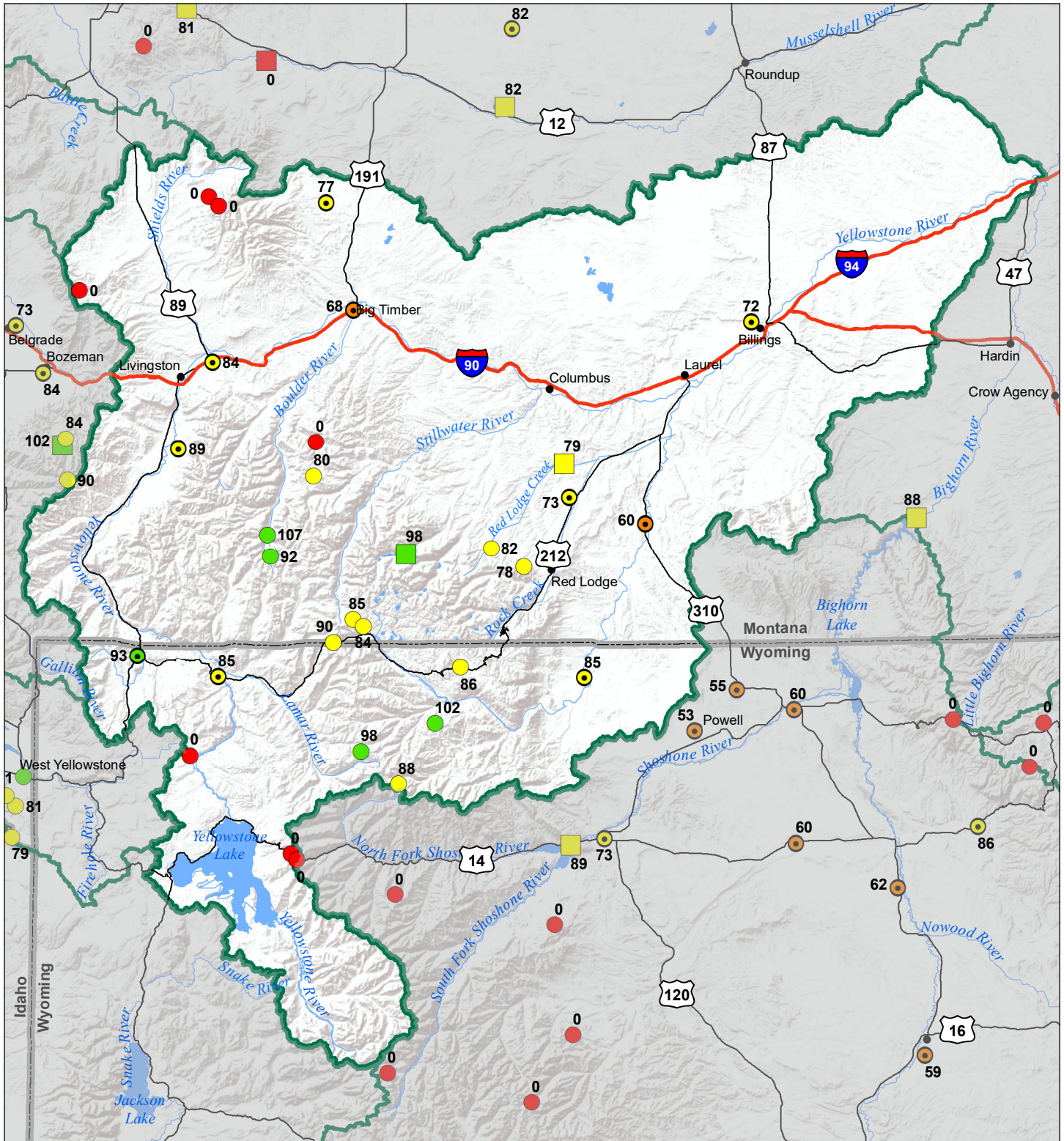
- > 150%
- 131 - 150%
- 111 - 130%
- 91 - 110%
- 71 - 90%
- 51 - 70%
- 1 - 50%

### Reservoirs Percent of Normal

- > 150%
- 131 - 150%
- 111 - 130%
- 91 - 110%
- 71 - 90%
- 51 - 70%
- 1 - 50%



# Upper Yellowstone River Basin Water Year to Date Precipitation and Reservoir Levels Percentage of Normal October 1, 2021



| Precipitation<br>Percent of Normal |             | Reservoirs<br>Percent of Normal |             |
|------------------------------------|-------------|---------------------------------|-------------|
| SNOTEL                             | COOP/ACIS   | SNOTEL                          | COOP/ACIS   |
| ● > 150%                           | ● 71 - 90%  | ■ > 150%                        | ● 71 - 90%  |
| ● 131 - 150%                       | ● 51 - 70%  | ■ 131 - 150%                    | ● 51 - 70%  |
| ● 111 - 130%                       | ● 1 - 50%   | ■ 111 - 130%                    | ● 1 - 50%   |
| ● 91 - 110%                        | ● 91 - 110% | ■ 91 - 110%                     | ● 91 - 110% |

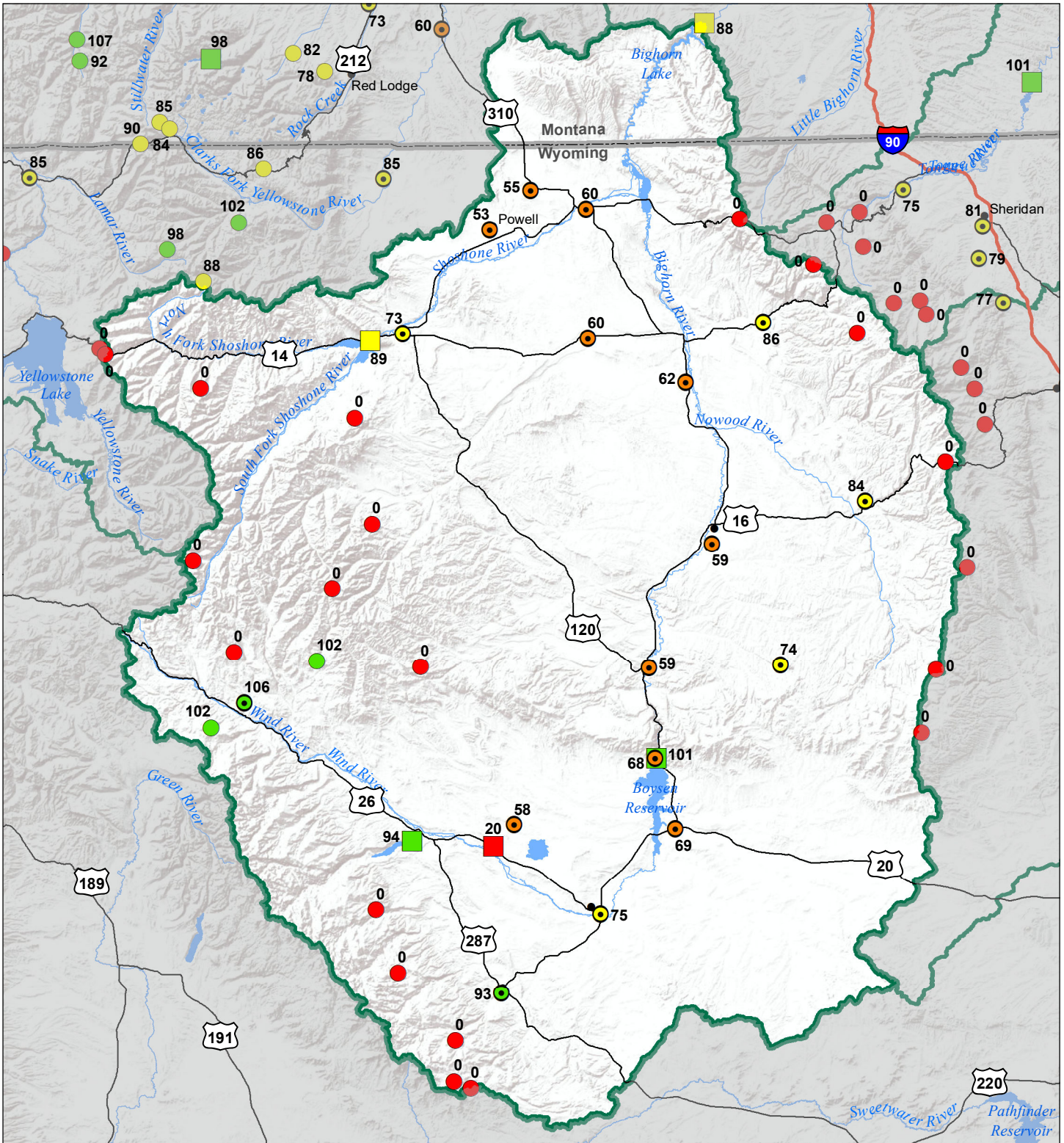
| Reservoirs<br>Percent of Normal |
|---------------------------------|
| ■ > 150%                        |
| ■ 131 - 150%                    |
| ■ 111 - 130%                    |
| ■ 91 - 110%                     |
| ■ 71 - 90%                      |
| ■ 51 - 70%                      |
| ■ 1 - 50%                       |



# Bighorn River Basin

## Water Year to Date Precipitation and Reservoir Levels Percentage of Normal

### October 1, 2021



#### Precipitation Percent of Normal

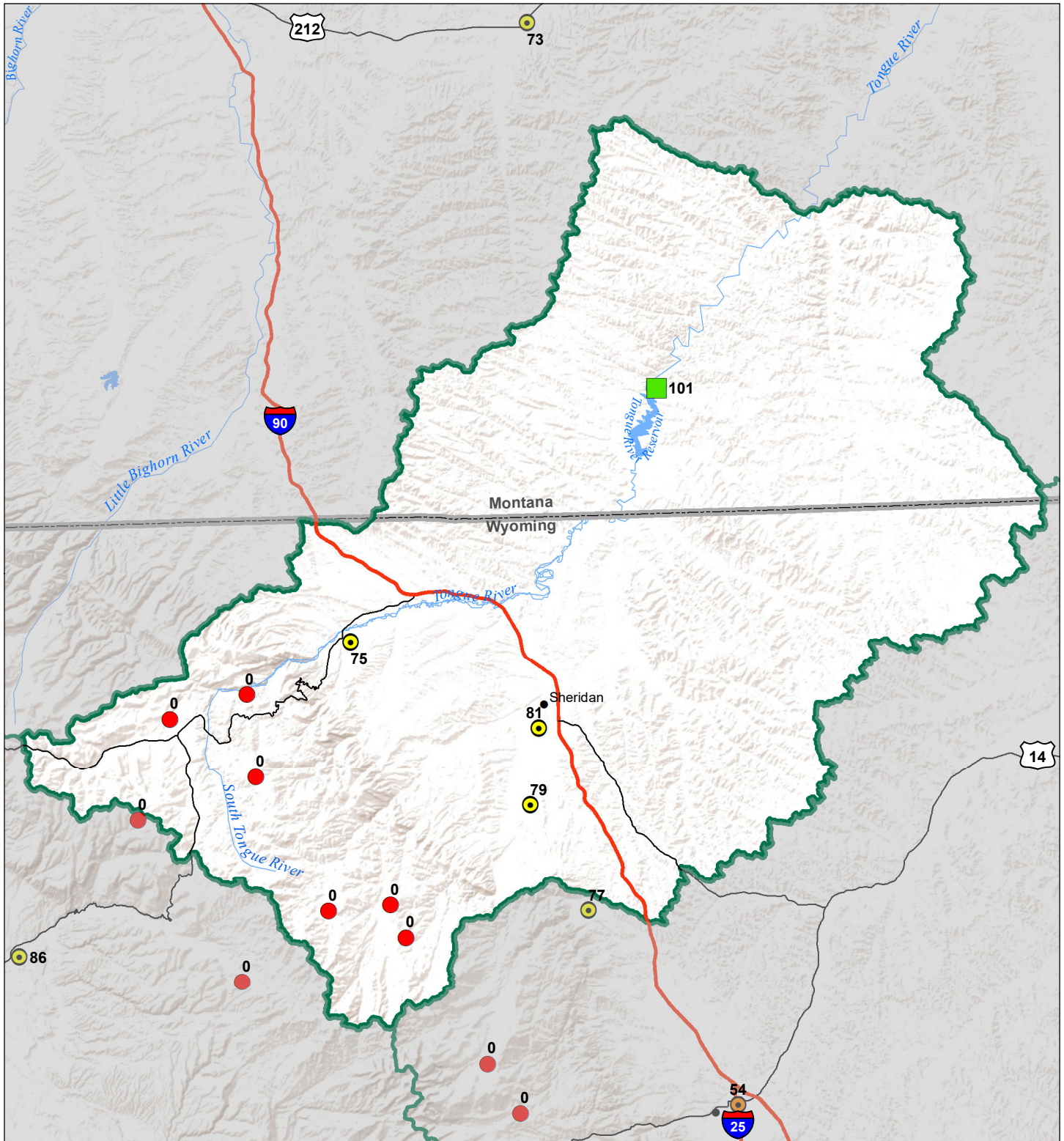
| SNOTEL       |            | COOP/ACIS    |            |
|--------------|------------|--------------|------------|
| ● > 150%     | ● 71 - 90% | ● > 150%     | ● 71 - 90% |
| ● 131 - 150% | ● 51 - 70% | ● 131 - 150% | ● 51 - 70% |
| ● 111 - 130% | ● 1 - 50%  | ● 111 - 130% | ● 1 - 50%  |
| ● 91 - 110%  |            | ● 91 - 110%  |            |

#### Reservoirs Percent of Normal

|              |
|--------------|
| ■ > 150%     |
| ■ 131 - 150% |
| ■ 111 - 130% |
| ■ 91 - 110%  |
| ■ 71 - 90%   |
| ■ 51 - 70%   |
| ■ 1 - 50%    |



# Tongue River Basin Water Year to Date Precipitation and Reservoir Levels Percentage of Normal October 1, 2021



### Precipitation Percent of Normal

| SNOTEL       |            | COOP/ACIS    |            |
|--------------|------------|--------------|------------|
| ● > 150%     | ● 71 - 90% | ● > 150%     | ● 71 - 90% |
| ● 131 - 150% | ● 51 - 70% | ● 131 - 150% | ● 51 - 70% |
| ● 111 - 130% | ● 1 - 50%  | ● 111 - 130% | ● 1 - 50%  |
| ● 91 - 110%  |            | ● 91 - 110%  |            |

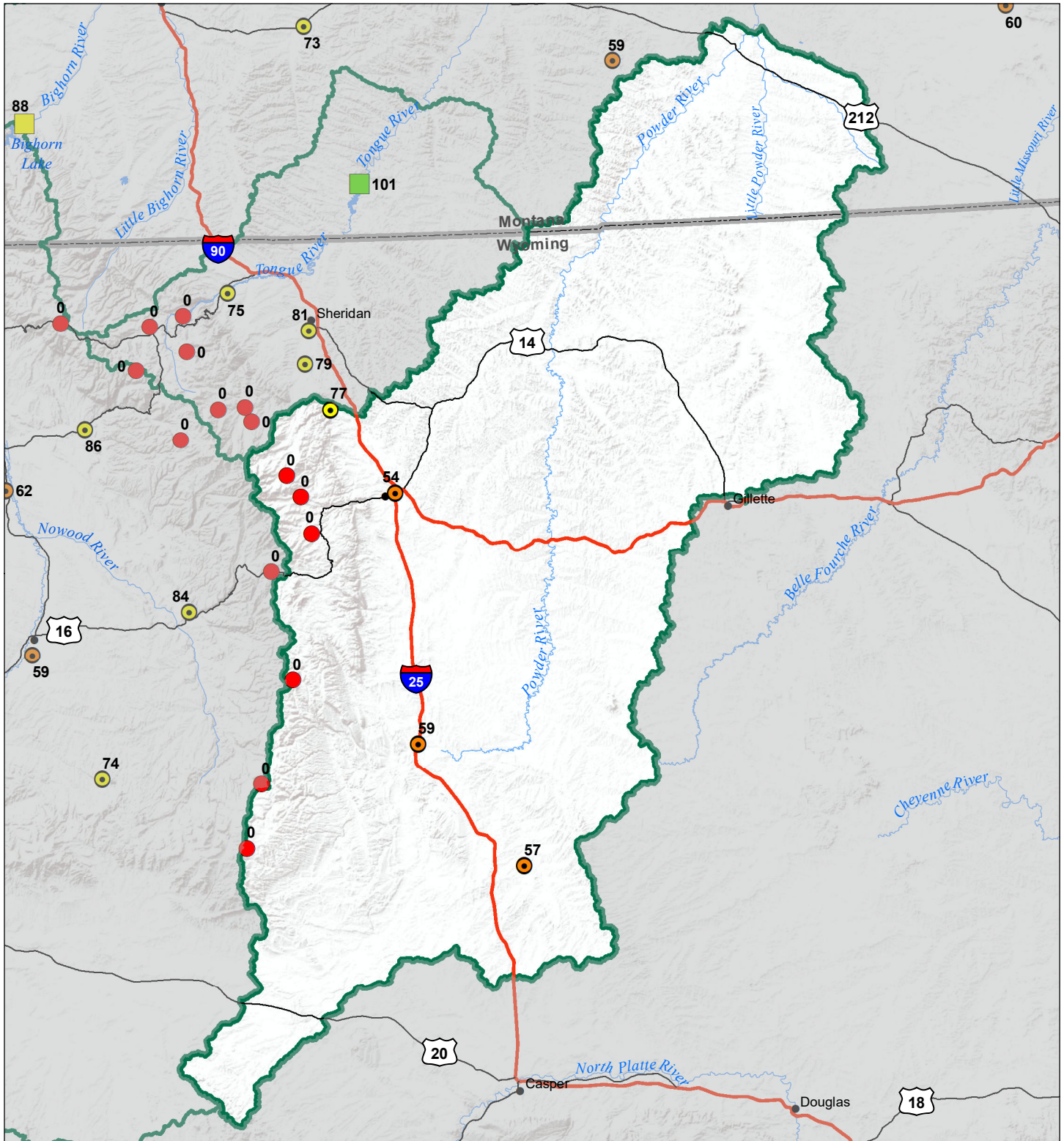
### Reservoirs Percent of Normal

|              |
|--------------|
| ■ > 150%     |
| ■ 131 - 150% |
| ■ 111 - 130% |
| ■ 91 - 110%  |
| ■ 71 - 90%   |
| ■ 51 - 70%   |
| ■ 1 - 50%    |





# Powder River Basin Water Year to Date Precipitation and Reservoir Levels Percentage of Normal October 1, 2021



### Precipitation Percent of Normal

| SNOTEL       |            | COOP/ACIS    |            |
|--------------|------------|--------------|------------|
| ● > 150%     | ● 71 - 90% | ● > 150%     | ● 71 - 90% |
| ● 131 - 150% | ● 51 - 70% | ● 131 - 150% | ● 51 - 70% |
| ● 111 - 130% | ● 1 - 50%  | ● 111 - 130% | ● 1 - 50%  |
| ● 91 - 110%  |            | ● 91 - 110%  |            |

### Reservoirs Percent of Normal

|              |
|--------------|
| ■ > 150%     |
| ■ 131 - 150% |
| ■ 111 - 130% |
| ■ 91 - 110%  |
| ■ 71 - 90%   |
| ■ 51 - 70%   |
| ■ 1 - 50%    |

