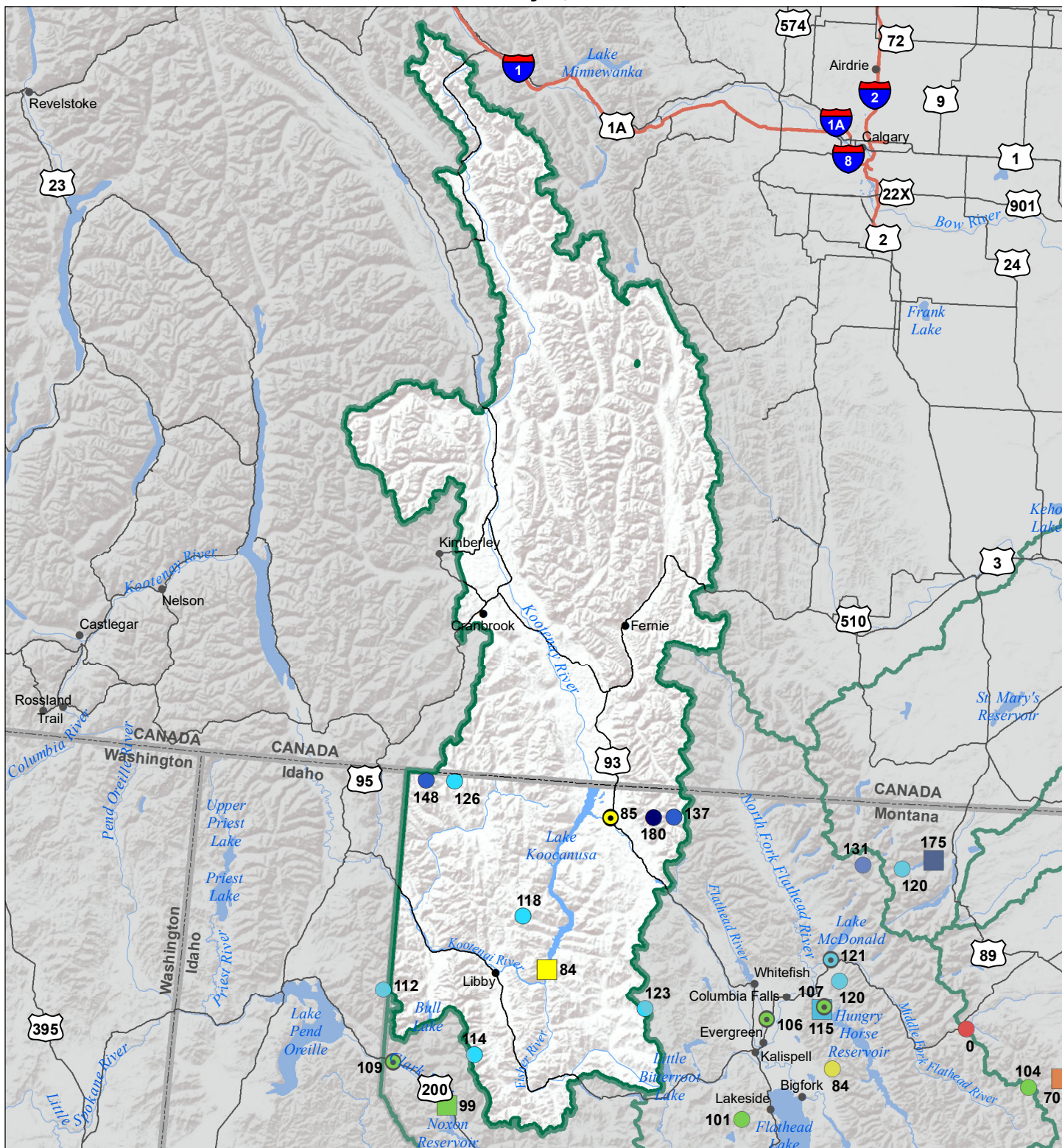


Kootenai River Basin

Water Year to Date Precipitation and Reservoir Levels

Percentage of Normal

February 1, 2022



Precipitation Percent of Normal

SNOTEL		COOP/ACIS	
● > 150%	● 71 - 90%	● > 150%	● 71 - 90%
● 131 - 150%	● 51 - 70%	● 131 - 150%	● 51 - 70%
● 111 - 130%	● 1 - 50%	● 111 - 130%	● 1 - 50%
● 91 - 110%		● 91 - 110%	

Reservoirs Percent of Normal

■ > 150%
■ 131 - 150%
■ 111 - 130%
■ 91 - 110%
■ 71 - 90%
■ 51 - 70%
■ 1 - 50%

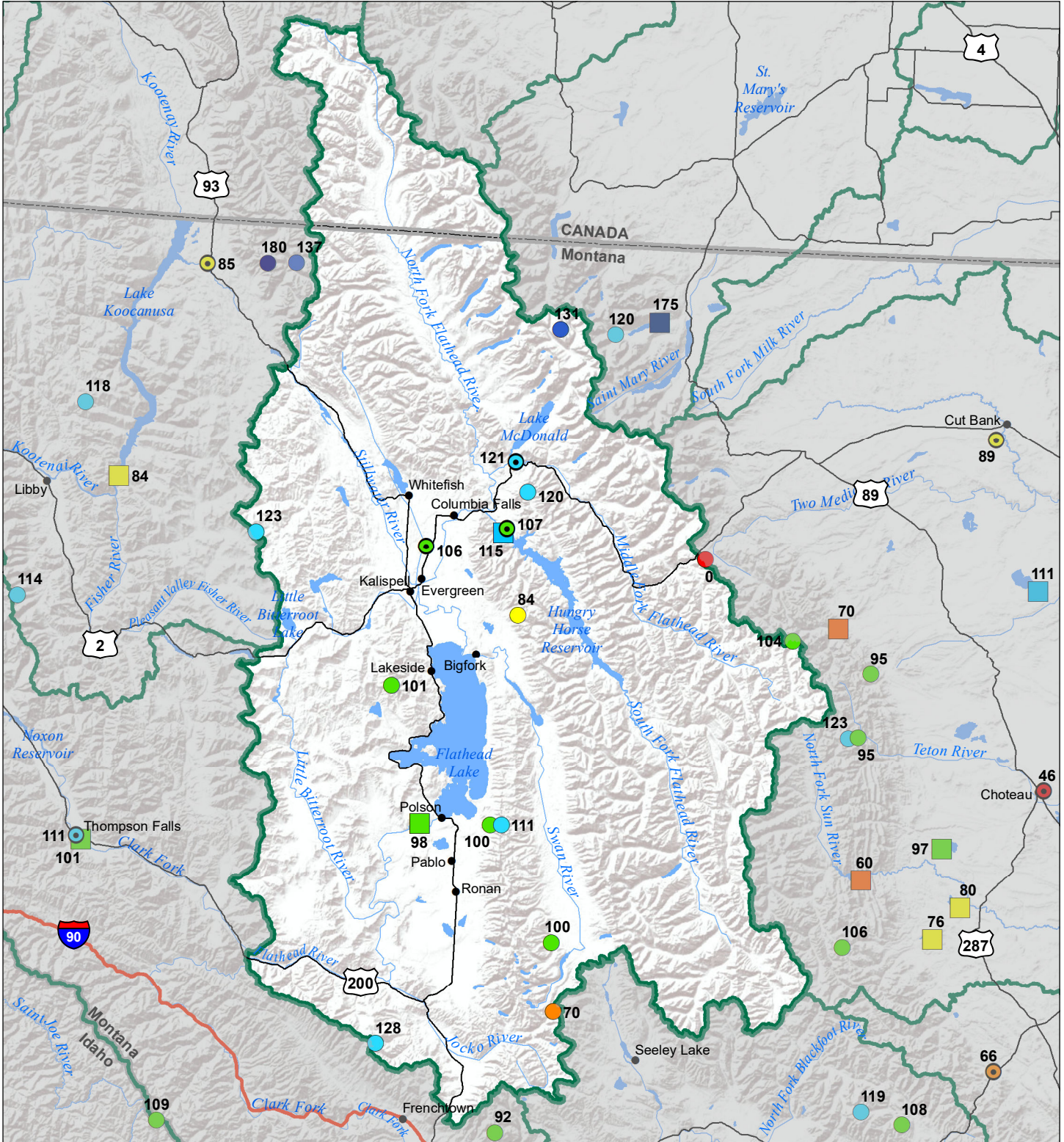


Flathead River Basin

Water Year to Date Precipitation and Reservoir Levels

Percentage of Normal

February 1, 2022



Precipitation Percent of Normal

SNOTEL		COOP/ACIS	
● > 150%	● 71 - 90%	● > 150%	● 71 - 90%
● 131 - 150%	● 51 - 70%	● 131 - 150%	● 51 - 70%
● 111 - 130%	● 1 - 50%	● 111 - 130%	● 1 - 50%
● 91 - 110%		● 91 - 110%	

Reservoirs Percent of Normal

■ > 150%
■ 131 - 150%
■ 111 - 130%
■ 91 - 110%
■ 71 - 90%
■ 51 - 70%
■ 1 - 50%

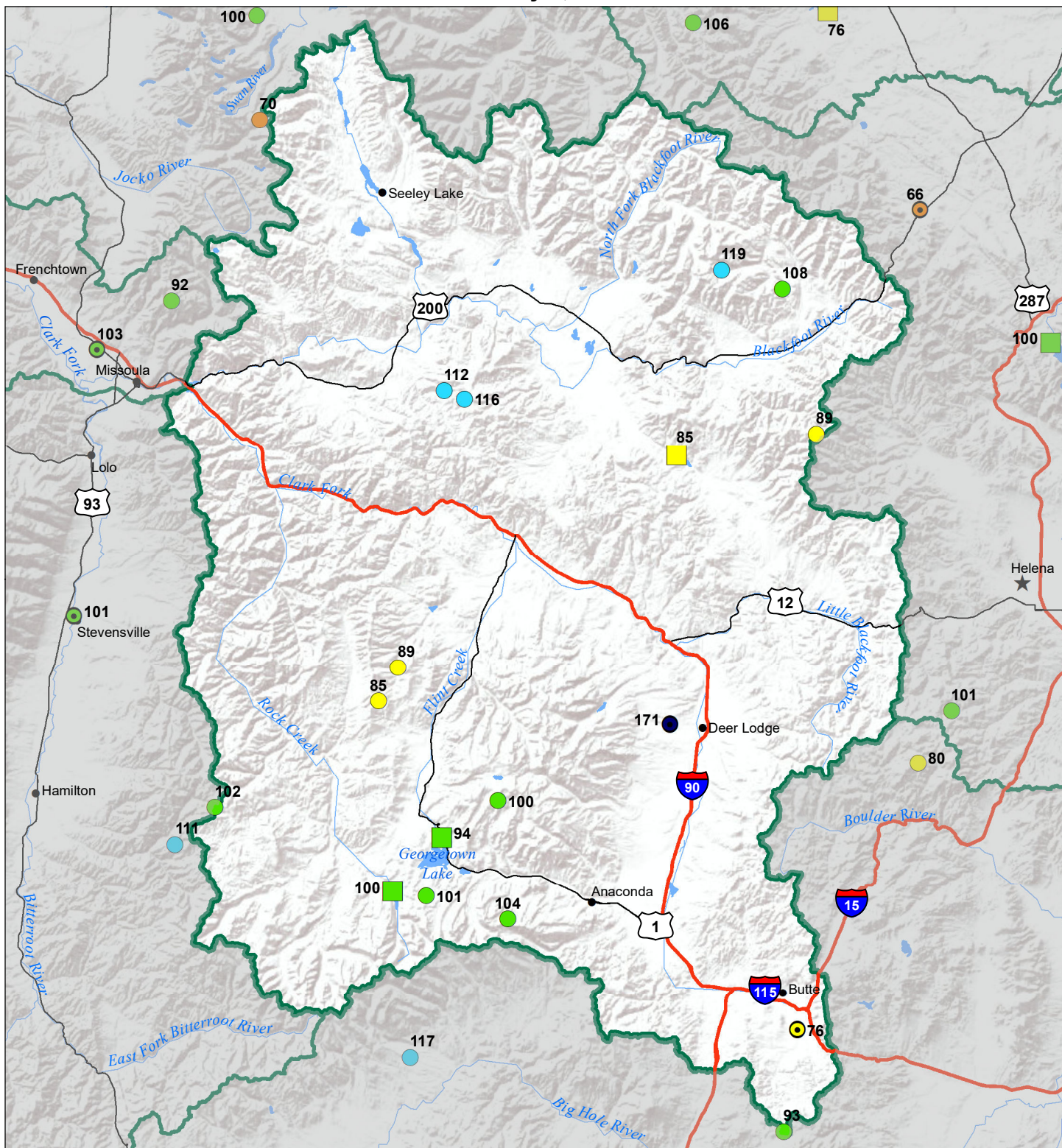


Upper Clark Fork River Basin

Water Year to Date Precipitation and Reservoir Levels

Percentage of Normal

February 1, 2022



Precipitation Percent of Normal

SNOTEL		COOP/ACIS	
● > 150%	● 71 - 90%	● > 150%	● 71 - 90%
● 131 - 150%	● 51 - 70%	● 131 - 150%	● 51 - 70%
● 111 - 130%	● 1 - 50%	● 111 - 130%	● 1 - 50%
● 91 - 110%		● 91 - 110%	

Reservoirs Percent of Normal

■ > 150%
■ 131 - 150%
■ 111 - 130%
■ 91 - 110%
■ 71 - 90%
■ 51 - 70%
■ 1 - 50%

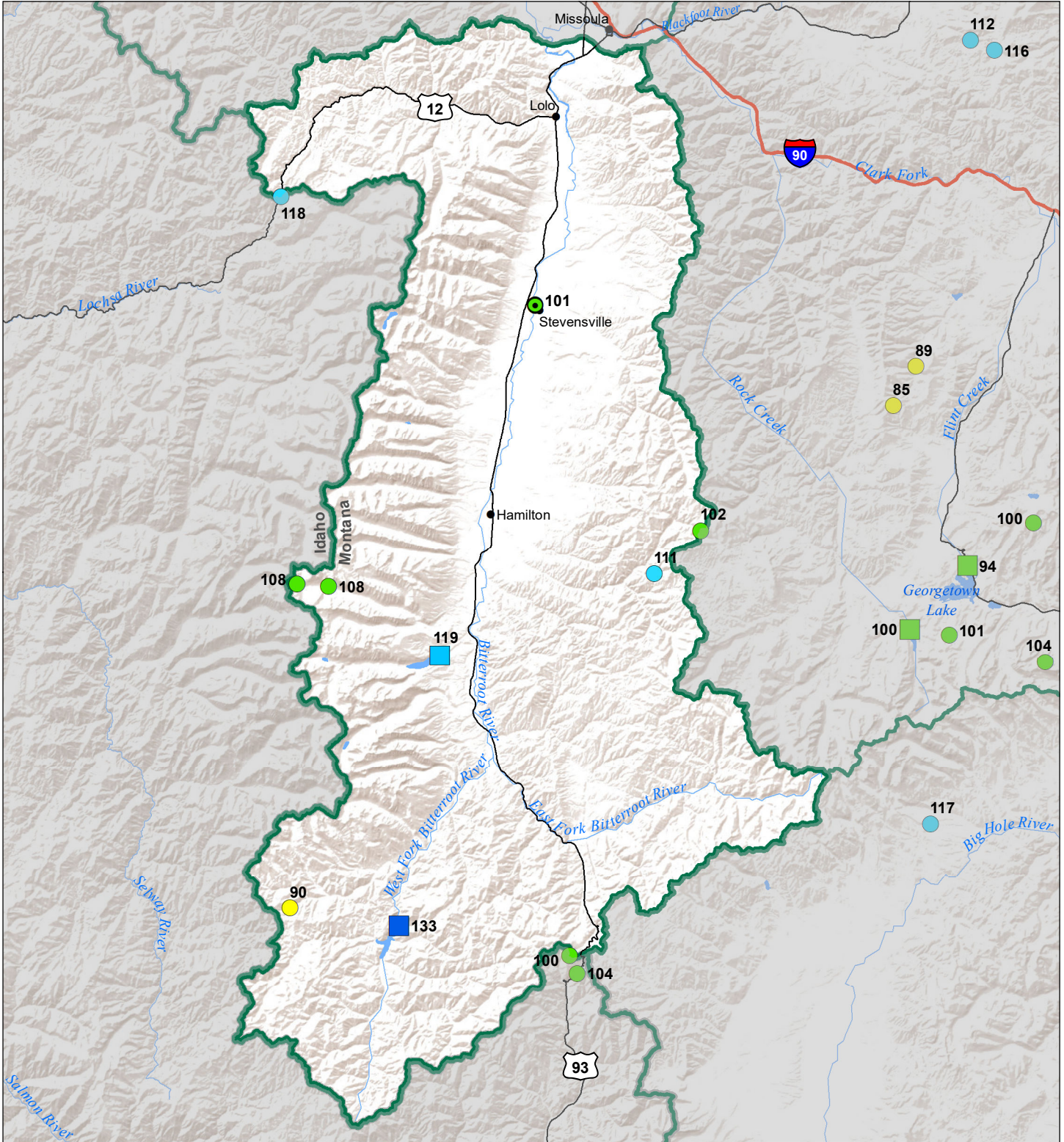


Bitterroot River Basin

Water Year to Date Precipitation and Reservoir Levels

Percentage of Normal

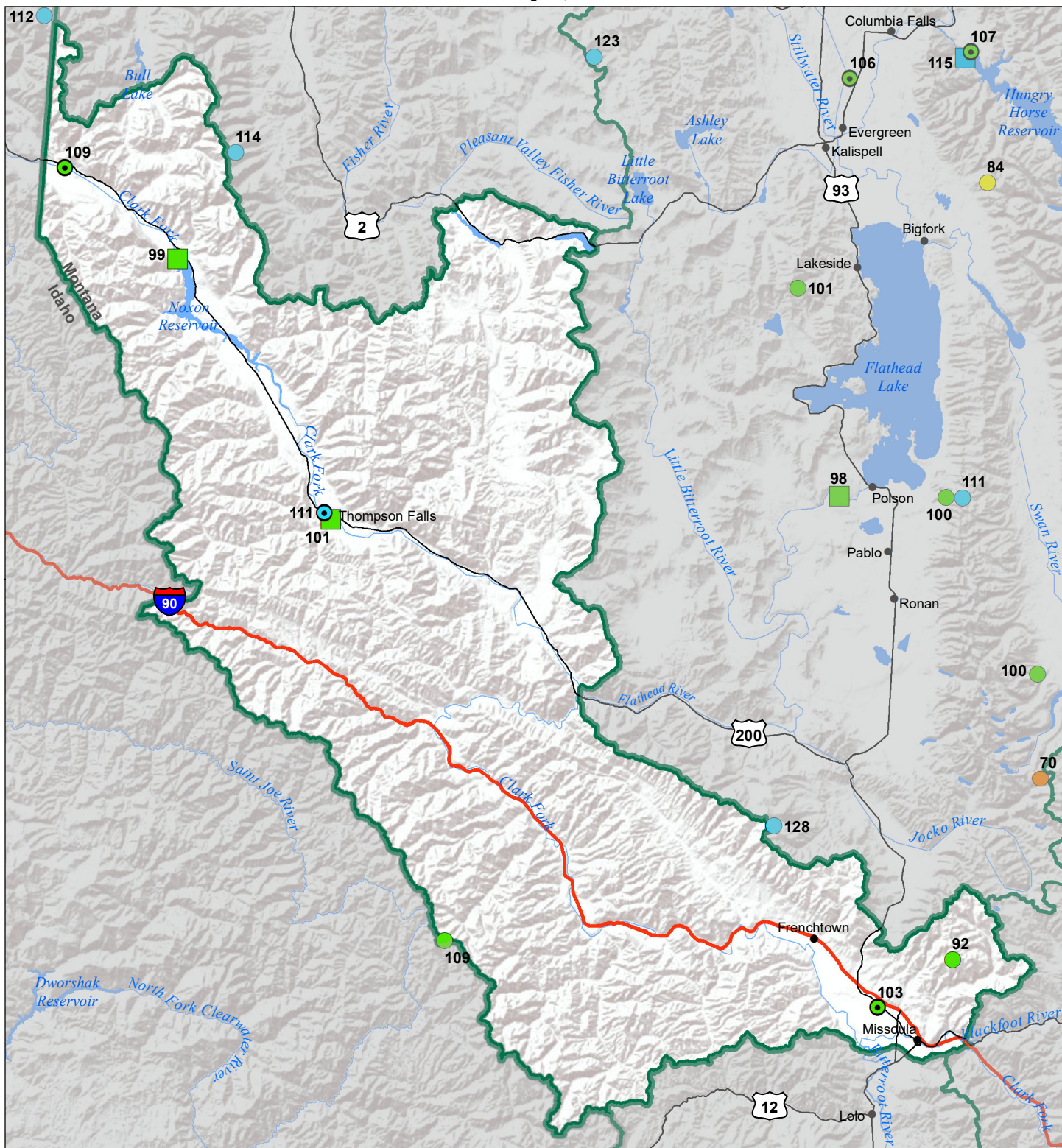
February 1, 2022



Precipitation Percent of Normal			
SNOTEL		COOP/ACIS	
● > 150%	● 71 - 90%	● > 150%	● 71 - 90%
● 131 - 150%	● 51 - 70%	● 131 - 150%	● 51 - 70%
● 111 - 130%	● 1 - 50%	● 111 - 130%	● 1 - 50%
● 91 - 110%		● 91 - 110%	

Reservoirs Percent of Normal	
■ > 150%	
■ 131 - 150%	
■ 111 - 130%	
■ 91 - 110%	
■ 71 - 90%	
■ 51 - 70%	
■ 1 - 50%	

Lower Clark Fork River Basin Water Year to Date Precipitation and Reservoir Levels Percentage of Normal February 1, 2022



Precipitation Percent of Normal		COOP/ACIS	
SNOTEL			
● > 150%	● 71 - 90%	● > 150%	● 71 - 90%
● 131 - 150%	● 51 - 70%	● 131 - 150%	● 51 - 70%
● 111 - 130%	● 1 - 50%	● 111 - 130%	● 1 - 50%
● 91 - 110%		● 91 - 110%	

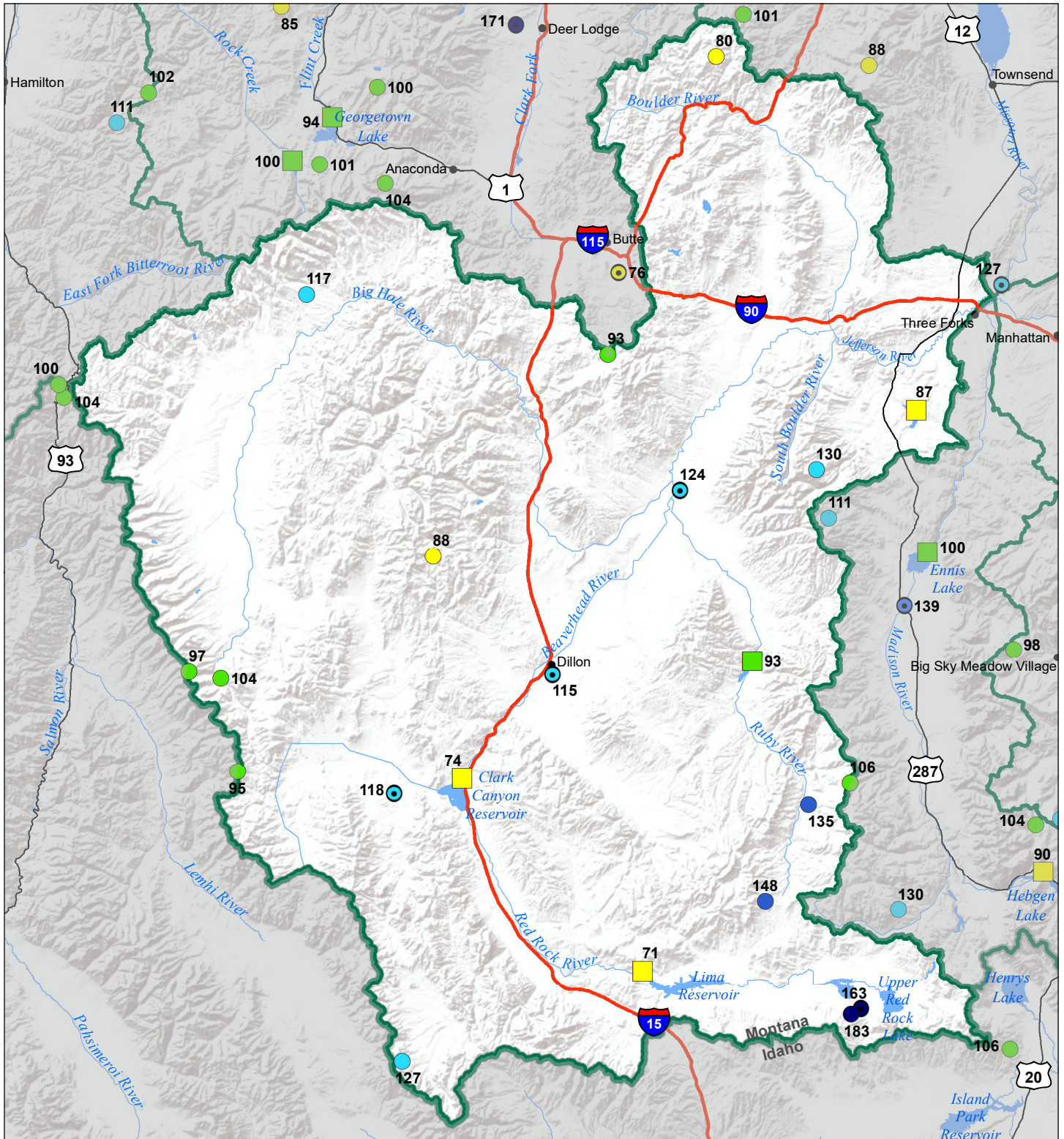
Reservoirs Percent of Normal	
■ > 150%	● 71 - 90%
■ 131 - 150%	● 51 - 70%
■ 111 - 130%	● 1 - 50%
■ 91 - 110%	
■ 71 - 90%	
■ 51 - 70%	
■ 1 - 50%	

USDA Montana State University Natural Resource Information System

Jefferson River Basin

Water Year to Date Precipitation and Reservoir Levels Percentage of Normal

February 1, 2022

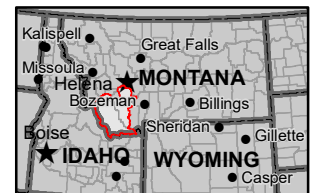


Precipitation Percent of Normal

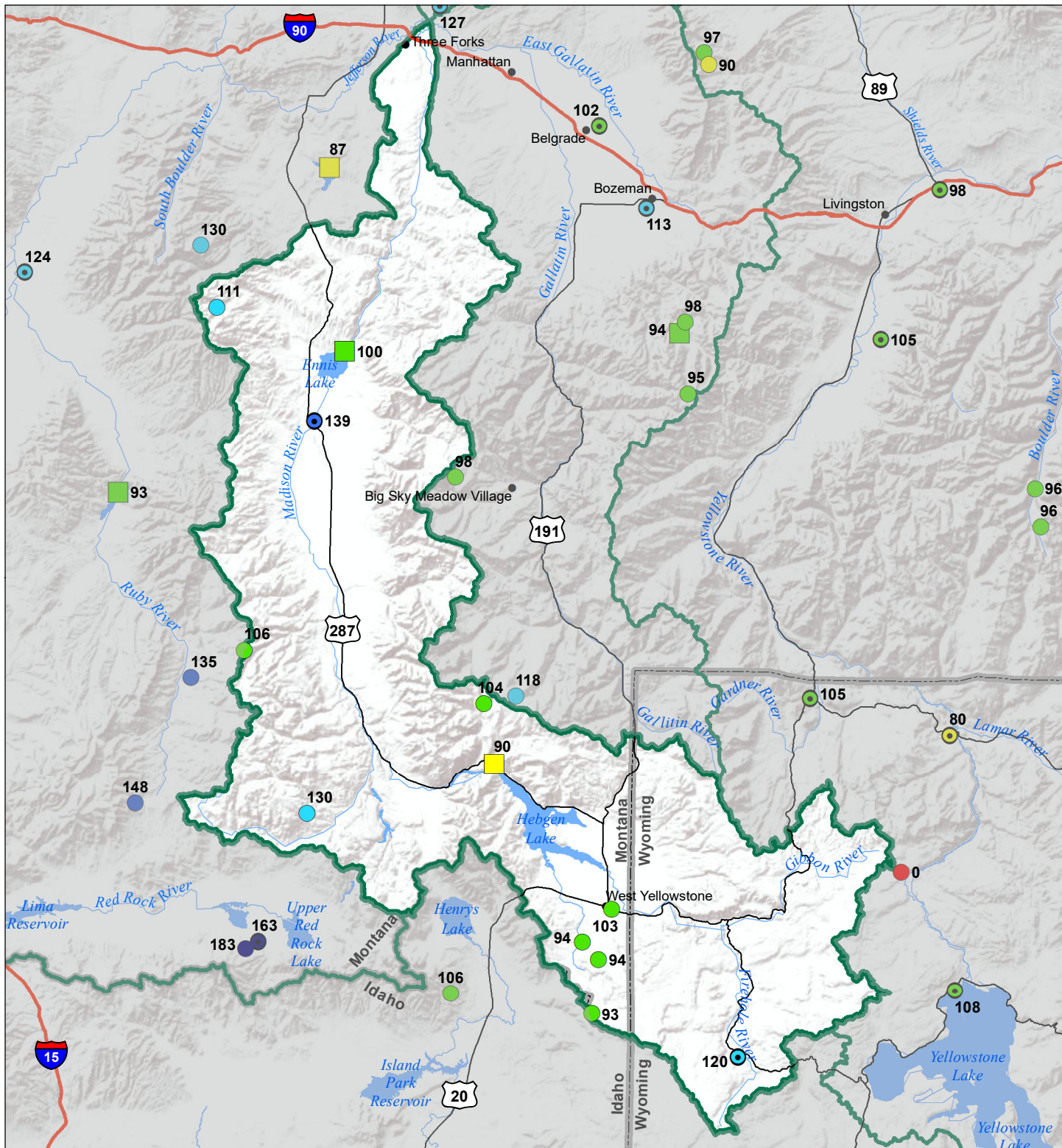
SNOTEL		COOP/ACIS	
● > 150%	● 71 - 90%	■ > 150%	■ 71 - 90%
● 131 - 150%	● 51 - 70%	■ 131 - 150%	■ 51 - 70%
● 111 - 130%	● 1 - 50%	■ 111 - 130%	■ 1 - 50%
● 91 - 110%		■ 91 - 110%	

Reservoirs Percent of Normal

■ > 150%
■ 131 - 150%
■ 111 - 130%
■ 91 - 110%
■ 71 - 90%
■ 51 - 70%
■ 1 - 50%



Madison River Basin Water Year to Date Precipitation and Reservoir Levels Percentage of Normal February 1, 2022



Precipitation Percent of Normal

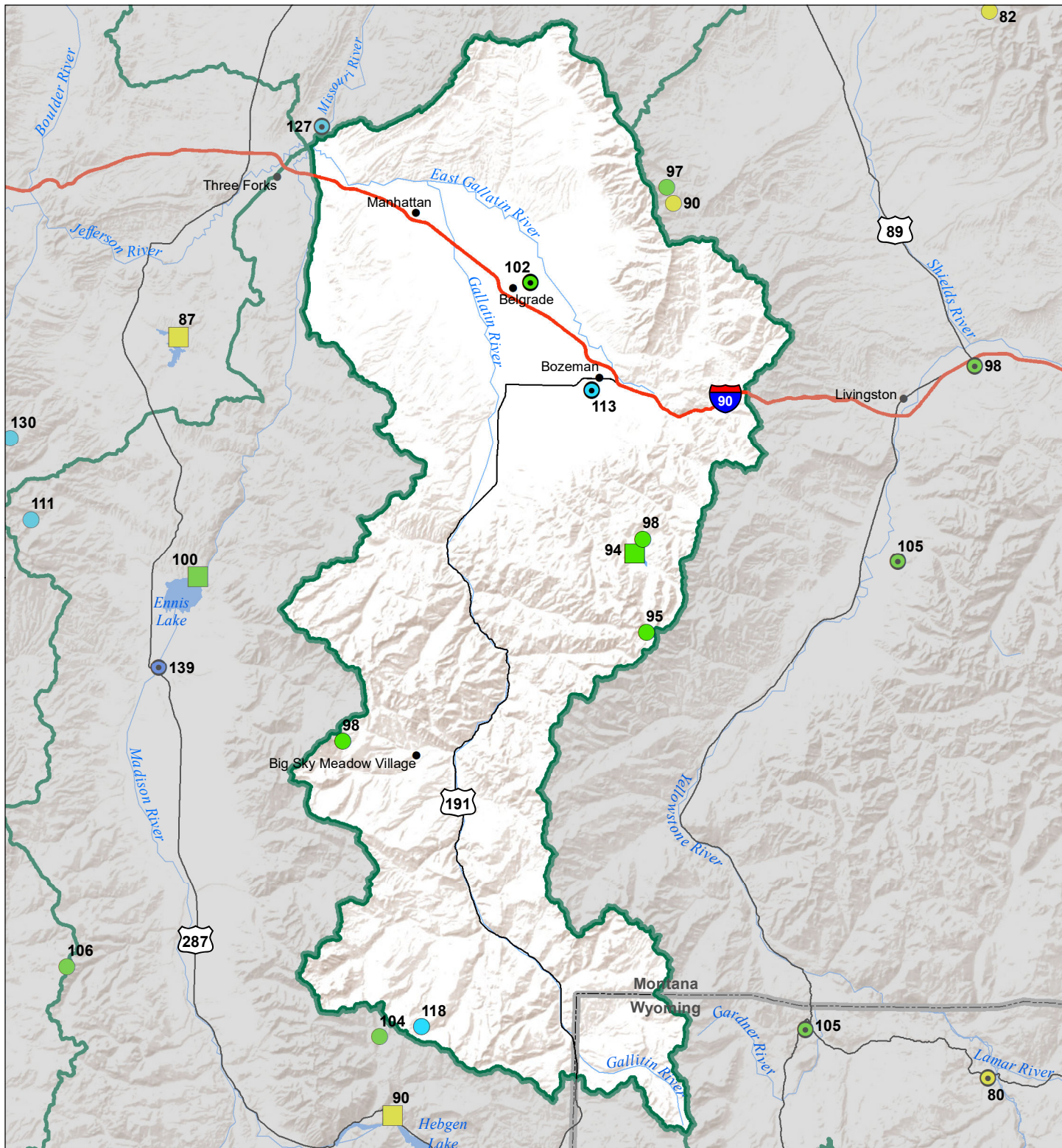
SNOTEL		COOP/ACIS	
● > 150%	● 71 - 90%	● > 150%	● 71 - 90%
● 131 - 150%	● 51 - 70%	● 131 - 150%	● 51 - 70%
● 111 - 130%	● 1 - 50%	● 111 - 130%	● 1 - 50%
● 91 - 110%		● 91 - 110%	

Reservoirs Percent of Normal

■ > 150%
■ 131 - 150%
■ 111 - 130%
■ 91 - 110%
■ 71 - 90%
■ 51 - 70%
■ 1 - 50%



Gallatin River Basin Water Year to Date Precipitation and Reservoir Levels Percentage of Normal February 1, 2022



Precipitation Percent of Normal

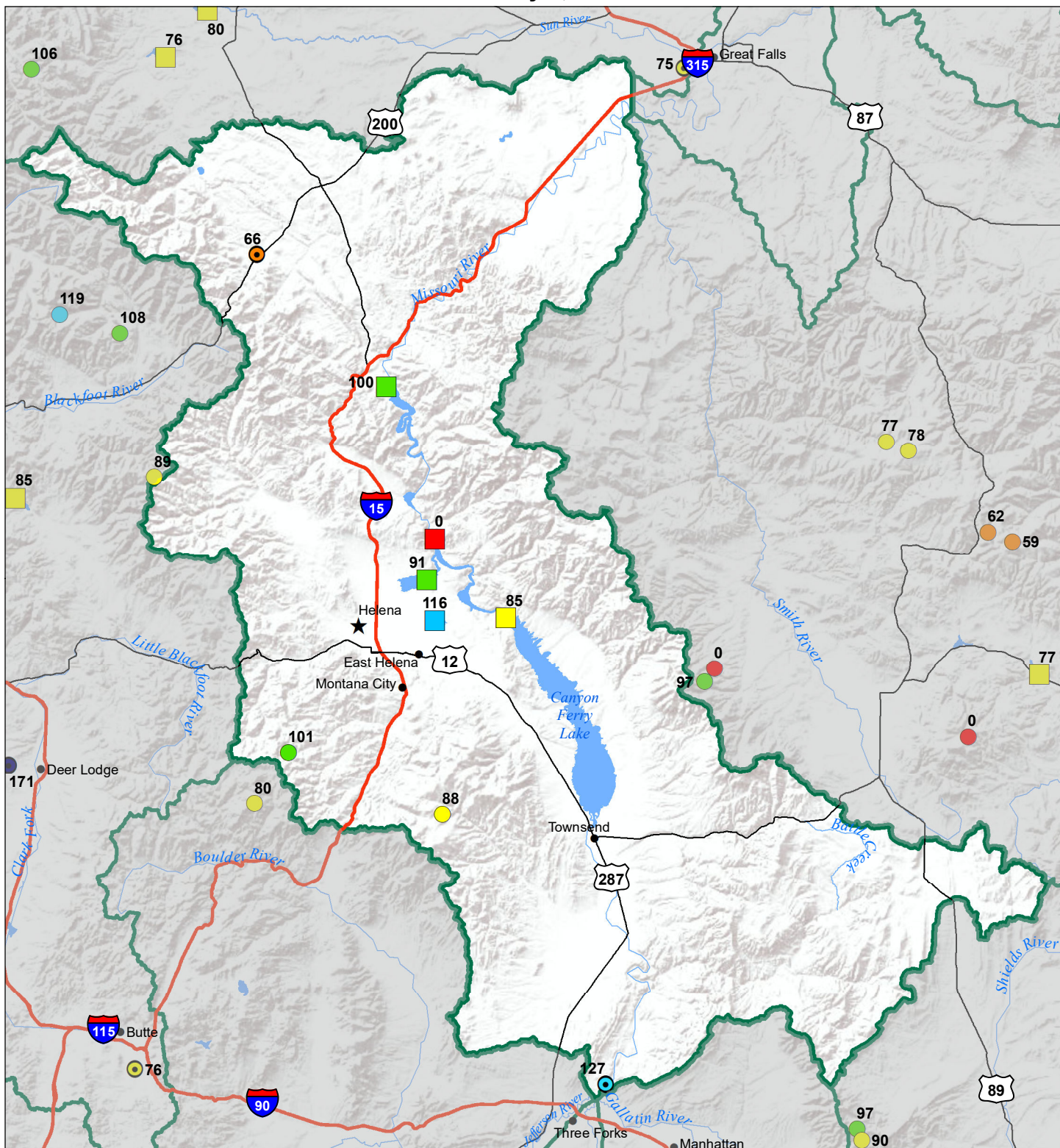
SNOTEL		COOP/ACIS	
● > 150%	● 71 - 90%	● > 150%	● 71 - 90%
● 131 - 150%	● 51 - 70%	● 131 - 150%	● 51 - 70%
● 111 - 130%	● 1 - 50%	● 111 - 130%	● 1 - 50%
● 91 - 110%		● 91 - 110%	

Reservoirs Percent of Normal

■ > 150%
■ 131 - 150%
■ 111 - 130%
■ 91 - 110%
■ 71 - 90%
■ 51 - 70%
■ 1 - 50%



Headwaters Mainstem River Basin Water Year to Date Precipitation and Reservoir Levels Percentage of Normal February 1, 2022



Precipitation Percent of Normal

SNOTEL		COOP/ACIS	
● > 150%	● 71 - 90%	● > 150%	● 71 - 90%
● 131 - 150%	● 51 - 70%	● 131 - 150%	● 51 - 70%
● 111 - 130%	● 1 - 50%	● 111 - 130%	● 1 - 50%
● 91 - 110%		● 91 - 110%	

Reservoirs Percent of Normal

■ > 150%
■ 131 - 150%
■ 111 - 130%
■ 91 - 110%
■ 71 - 90%
■ 51 - 70%
■ 1 - 50%

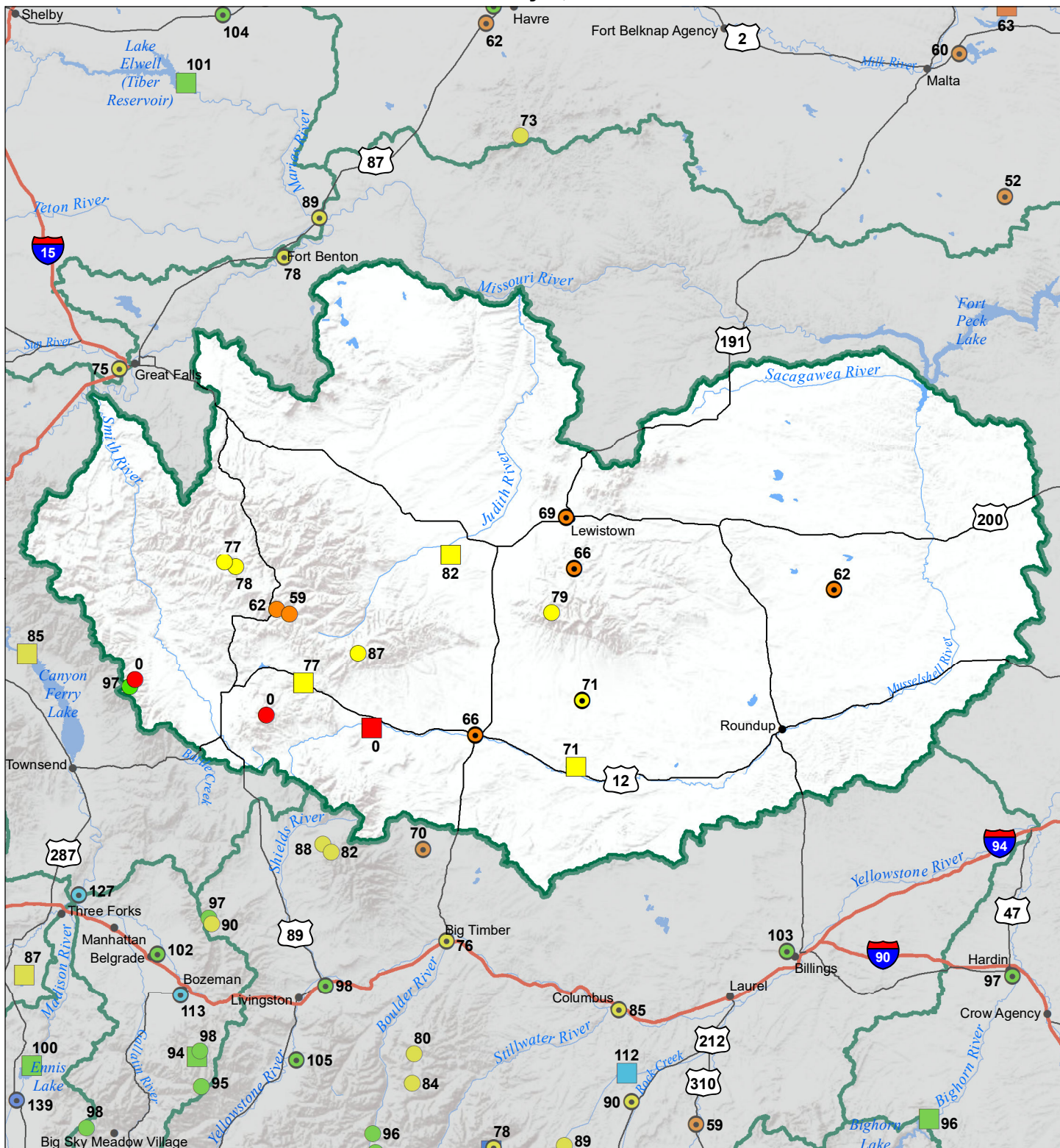


Smith-Judith-Musselshell River Basin

Water Year to Date Precipitation and Reservoir Levels

Percentage of Normal

February 1, 2022



Precipitation Percent of Normal

SNOTEL		COOP/ACIS	
● > 150%	● 71 - 90%	● > 150%	● 71 - 90%
● 131 - 150%	● 51 - 70%	● 131 - 150%	● 51 - 70%
● 111 - 130%	● 1 - 50%	● 111 - 130%	● 1 - 50%
● 91 - 110%		● 91 - 110%	

Reservoirs Percent of Normal

■ > 150%
■ 131 - 150%
■ 111 - 130%
■ 91 - 110%
■ 71 - 90%
■ 51 - 70%
■ 1 - 50%

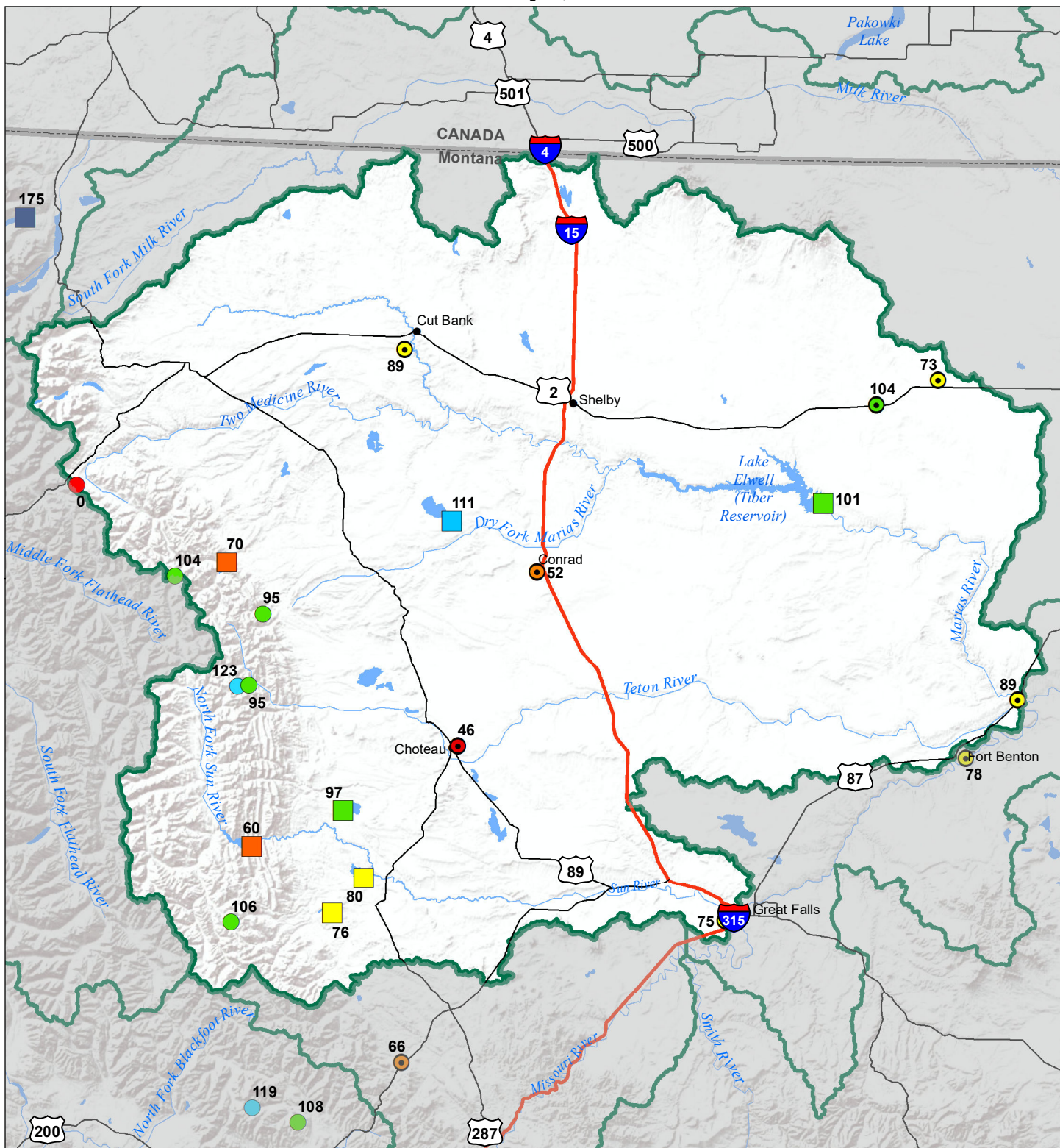


Sun-Teton-Marias River Basin

Water Year to Date Precipitation and Reservoir Levels

Percentage of Normal

February 1, 2022



Precipitation Percent of Normal

SNOTEL

- > 150%
- 131 - 150%
- 111 - 130%
- 91 - 110%
- 71 - 90%
- 51 - 70%
- 1 - 50%

COOP/ACIS

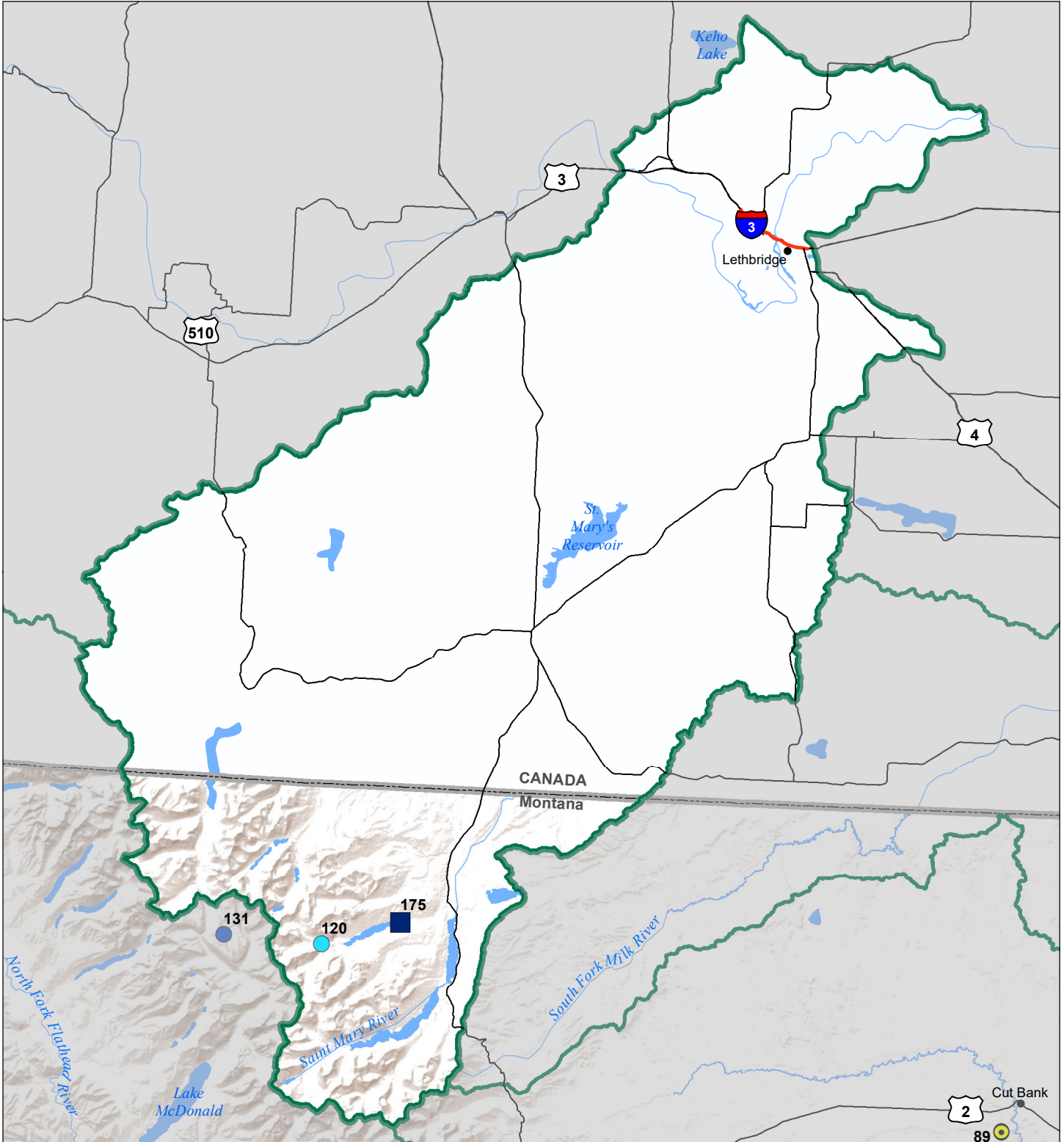
- > 150%
- 131 - 150%
- 111 - 130%
- 91 - 110%
- 71 - 90%
- 51 - 70%
- 1 - 50%

Reservoirs Percent of Normal

- > 150%
- 131 - 150%
- 111 - 130%
- 91 - 110%
- 71 - 90%
- 51 - 70%
- 1 - 50%



St Mary's River Basin Water Year to Date Precipitation and Reservoir Levels Percentage of Normal February 1, 2022



Precipitation Percent of Normal

SNOTEL		COOP/ACIS	
● > 150%	● 71 - 90%	● > 150%	● 71 - 90%
● 131 - 150%	● 51 - 70%	● 131 - 150%	● 51 - 70%
● 111 - 130%	● 1 - 50%	● 111 - 130%	● 1 - 50%
● 91 - 110%		● 91 - 110%	

Reservoirs Percent of Normal

■ > 150%
■ 131 - 150%
■ 111 - 130%
■ 91 - 110%
■ 71 - 90%
■ 51 - 70%
■ 1 - 50%

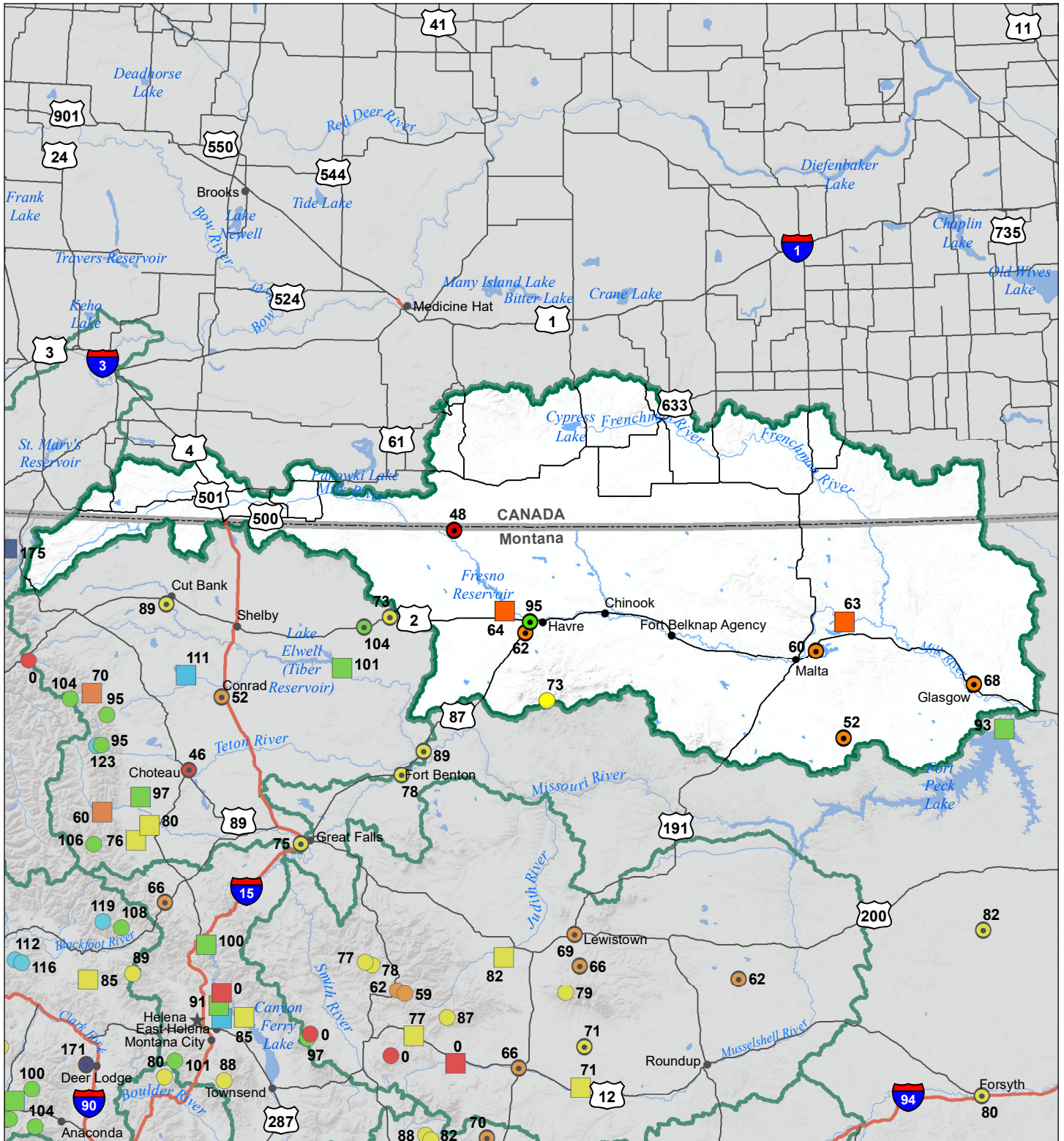


Milk River Basin

Water Year to Date Precipitation and Reservoir Levels

Percentage of Normal

February 1, 2022



Precipitation Percent of Normal

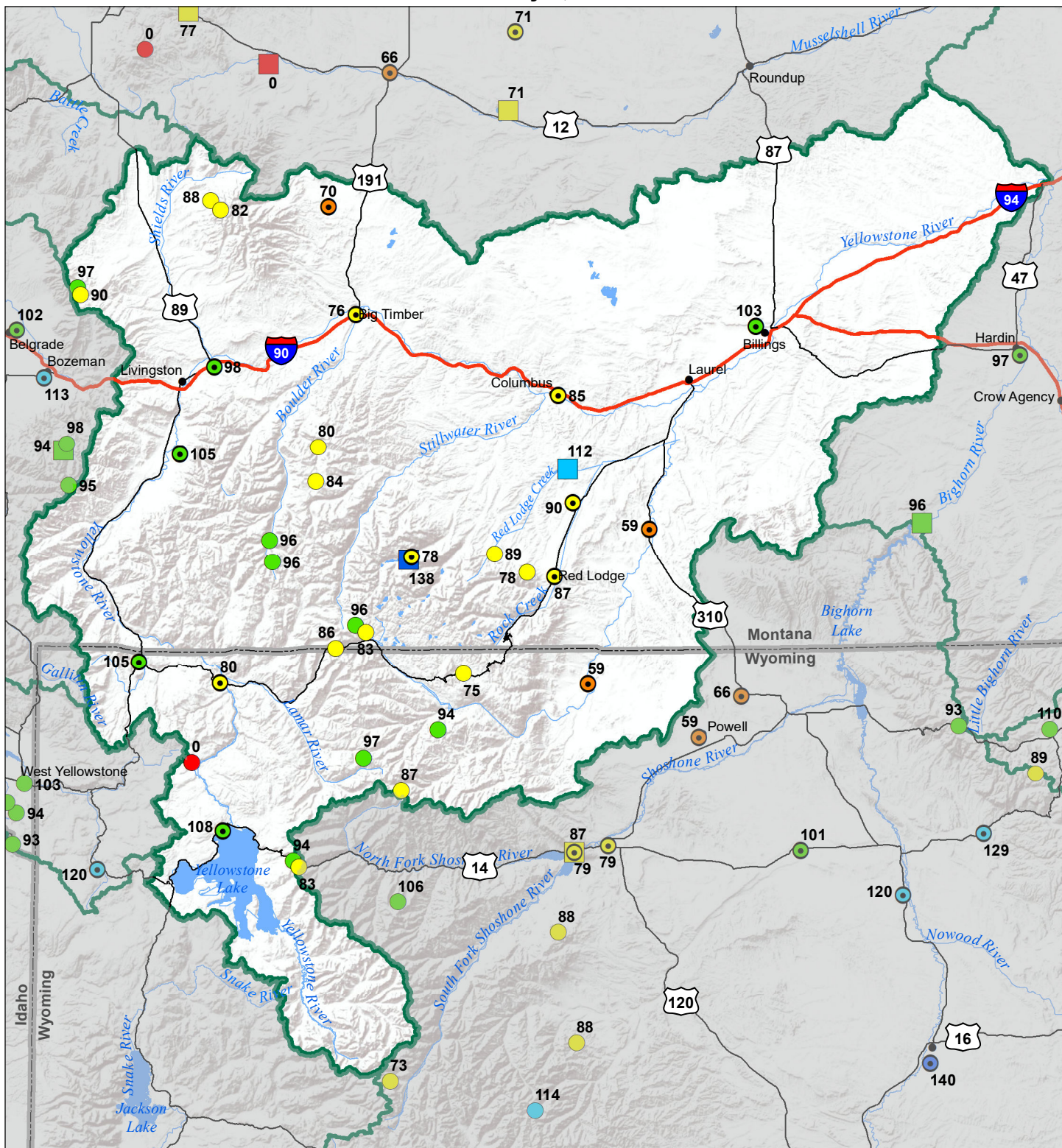
SNOTEL		COOP/ACIS	
● > 150%	● 71 - 90%	● > 150%	● 71 - 90%
● 131 - 150%	● 51 - 70%	● 131 - 150%	● 51 - 70%
● 111 - 130%	● 1 - 50%	● 111 - 130%	● 1 - 50%
● 91 - 110%		● 91 - 110%	

Reservoirs Percent of Normal

■ > 150%
■ 131 - 150%
■ 111 - 130%
■ 91 - 110%
■ 71 - 90%
■ 51 - 70%
■ 1 - 50%



Upper Yellowstone River Basin Water Year to Date Precipitation and Reservoir Levels Percentage of Normal February 1, 2022



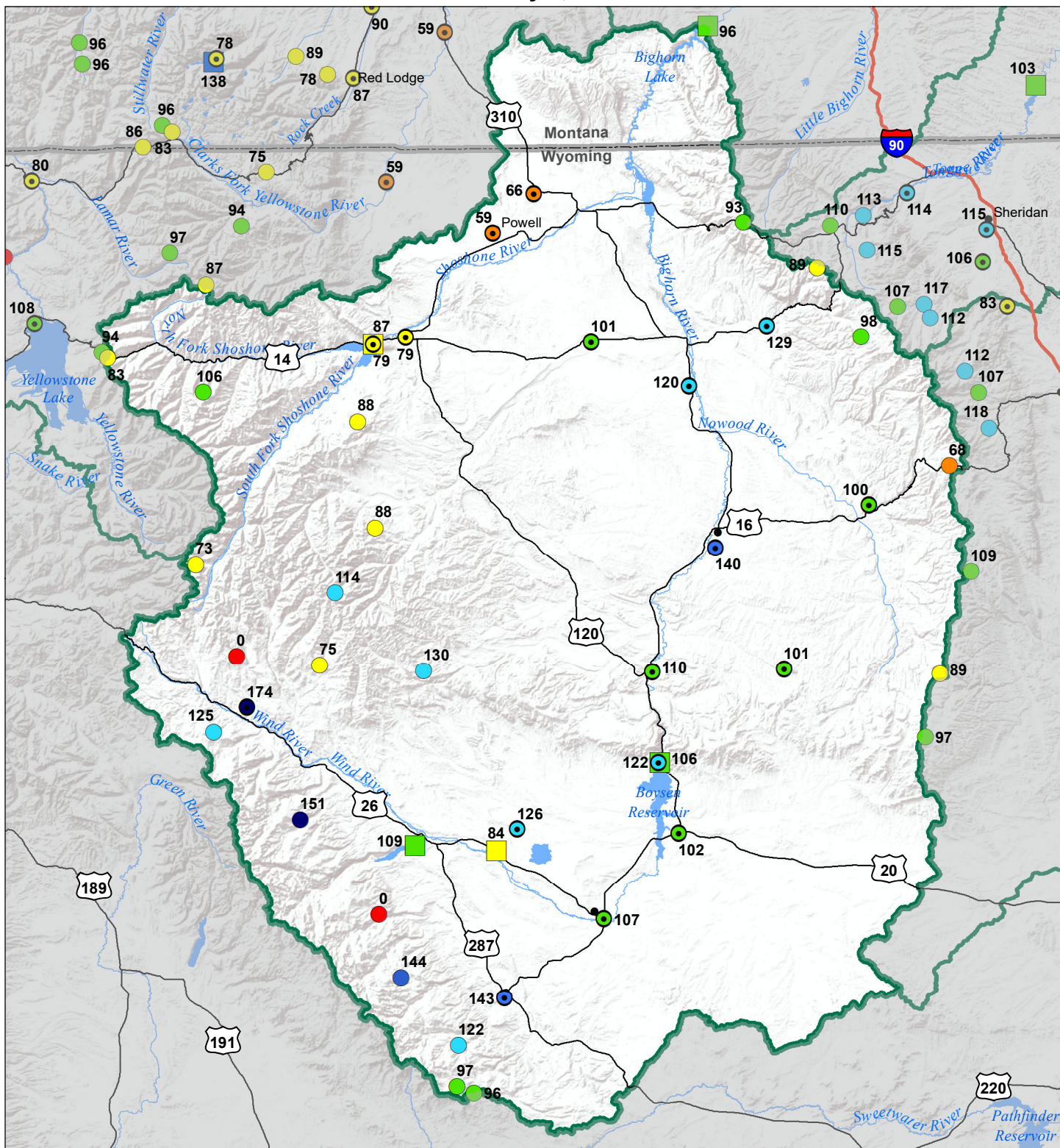
Precipitation Percent of Normal		Reservoirs Percent of Normal	
SNOTEL	COOP/ACIS	SNOTEL	COOP/ACIS
Dark Blue: > 150%	Yellow: 71 - 90%	Dark Blue: > 150%	Yellow: 71 - 90%
Blue: 131 - 150%	Orange: 51 - 70%	Blue: 131 - 150%	Orange: 51 - 70%
Cyan: 111 - 130%	Red: 1 - 50%	Cyan: 111 - 130%	Red: 1 - 50%
Green: 91 - 110%		Green: 91 - 110%	

Reservoirs Percent of Normal
Dark Blue: > 150%
Blue: 131 - 150%
Cyan: 111 - 130%
Green: 91 - 110%
Yellow: 71 - 90%
Orange: 51 - 70%
Red: 1 - 50%

Bighorn River Basin

Water Year to Date Precipitation and Reservoir Levels Percentage of Normal

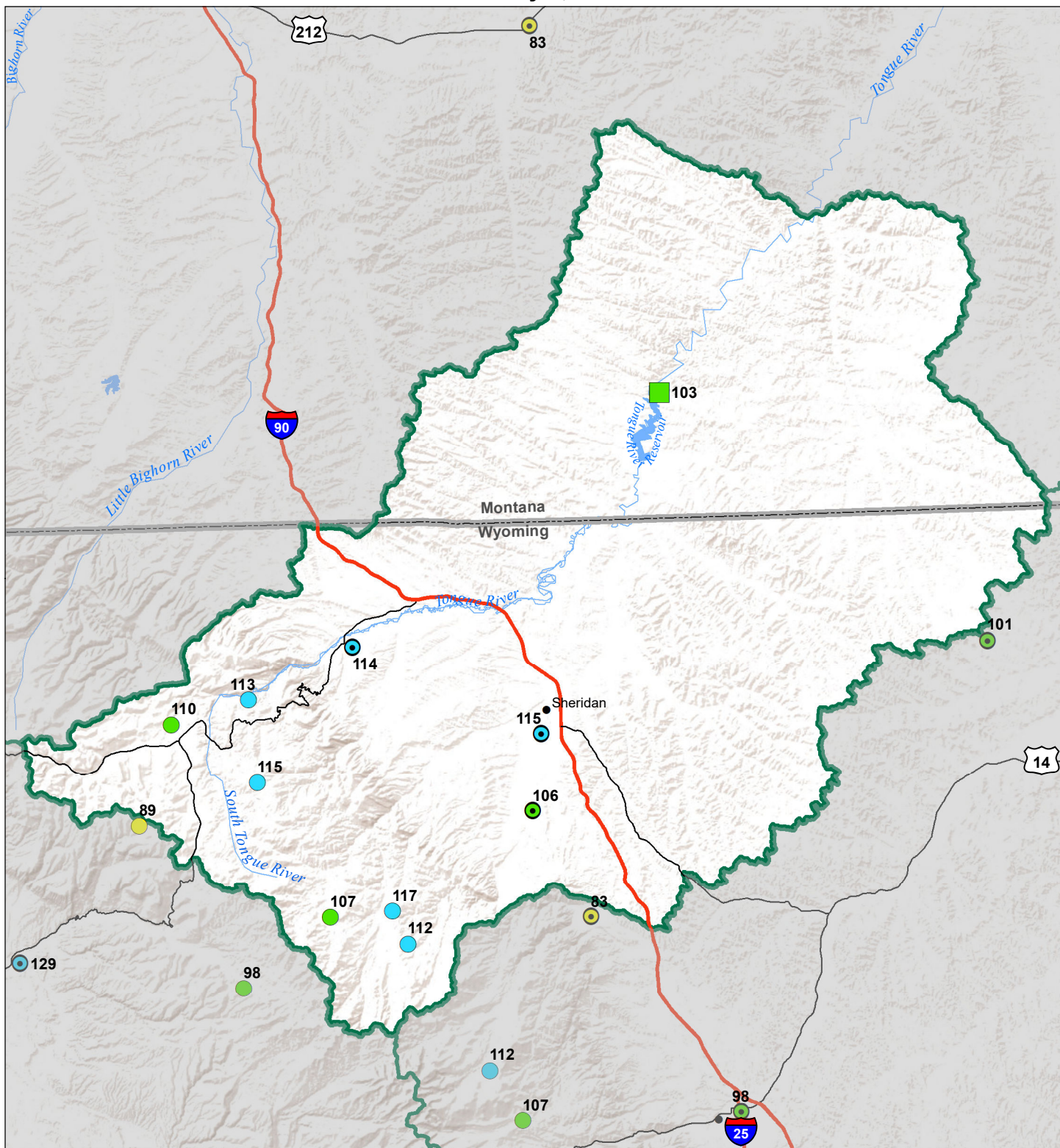
February 1, 2022



Precipitation Percent of Normal	
SNOTEL	COOP/ACIS
● > 150%	● > 150%
● 131 - 150%	● 131 - 150%
● 111 - 130%	● 111 - 130%
● 91 - 110%	● 91 - 110%
● 71 - 90%	● 71 - 90%
● 51 - 70%	● 51 - 70%
● 1 - 50%	● 1 - 50%

Reservoirs Percent of Normal	
■ > 150%	■ > 150%
■ 131 - 150%	■ 131 - 150%
■ 111 - 130%	■ 111 - 130%
■ 91 - 110%	■ 91 - 110%
■ 71 - 90%	■ 71 - 90%
■ 51 - 70%	■ 51 - 70%
■ 1 - 50%	■ 1 - 50%

Tongue River Basin Water Year to Date Precipitation and Reservoir Levels Percentage of Normal February 1, 2022



Precipitation Percent of Normal

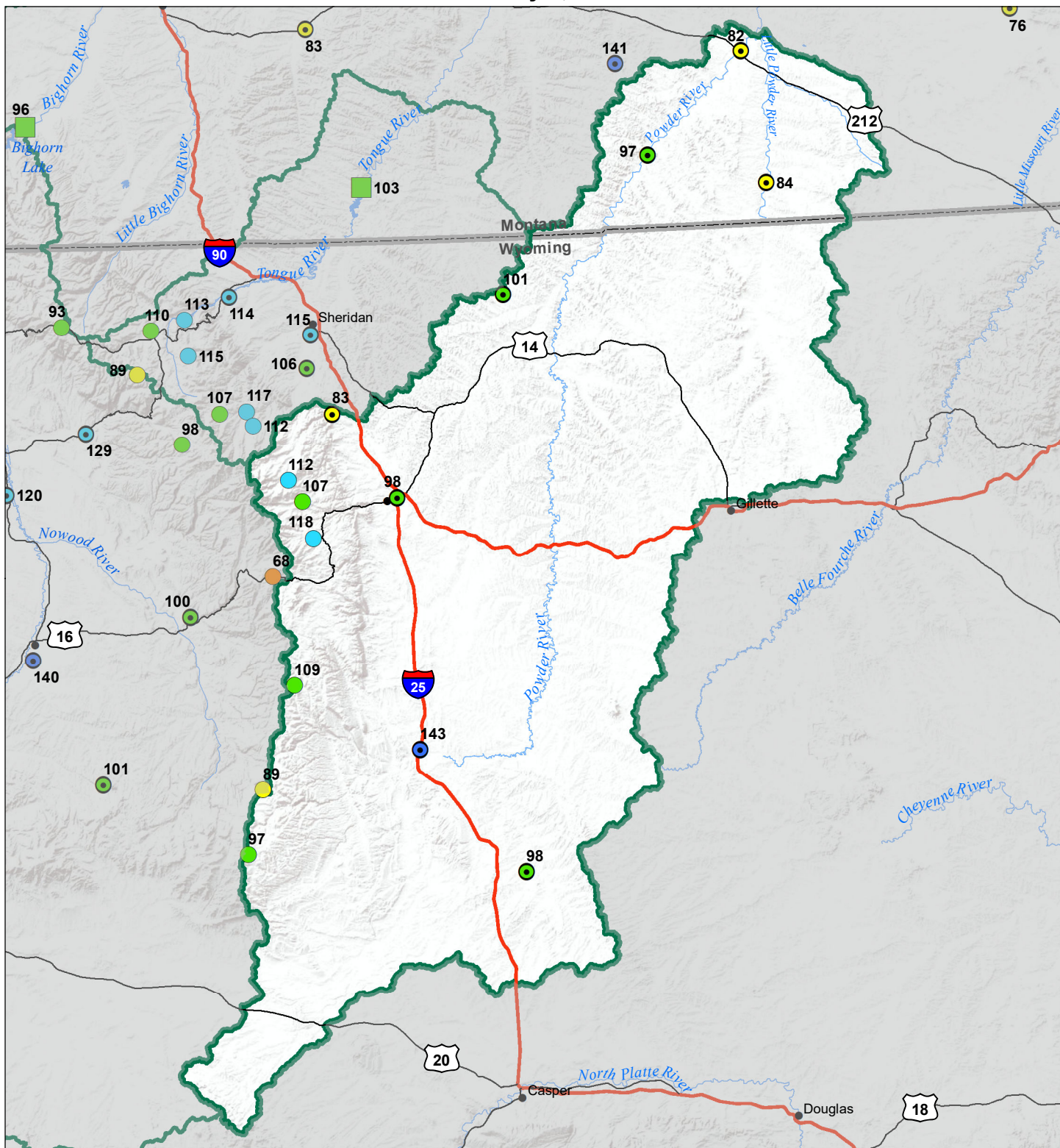
SNOTEL		COOP/ACIS	
● > 150%	● 71 - 90%	● > 150%	● 71 - 90%
● 131 - 150%	● 51 - 70%	● 131 - 150%	● 51 - 70%
● 111 - 130%	● 1 - 50%	● 111 - 130%	● 1 - 50%
● 91 - 110%		● 91 - 110%	

Reservoirs Percent of Normal

■ > 150%
■ 131 - 150%
■ 111 - 130%
■ 91 - 110%
■ 71 - 90%
■ 51 - 70%
■ 1 - 50%



Powder River Basin Water Year to Date Precipitation and Reservoir Levels Percentage of Normal February 1, 2022



Precipitation Percent of Normal

SNOTEL		COOP/ACIS	
● > 150%	● 71 - 90%	● > 150%	● 71 - 90%
● 131 - 150%	● 51 - 70%	● 131 - 150%	● 51 - 70%
● 111 - 130%	● 1 - 50%	● 111 - 130%	● 1 - 50%
● 91 - 110%		● 91 - 110%	

Reservoirs Percent of Normal

■ > 150%
■ 131 - 150%
■ 111 - 130%
■ 91 - 110%
■ 71 - 90%
■ 51 - 70%
■ 1 - 50%

