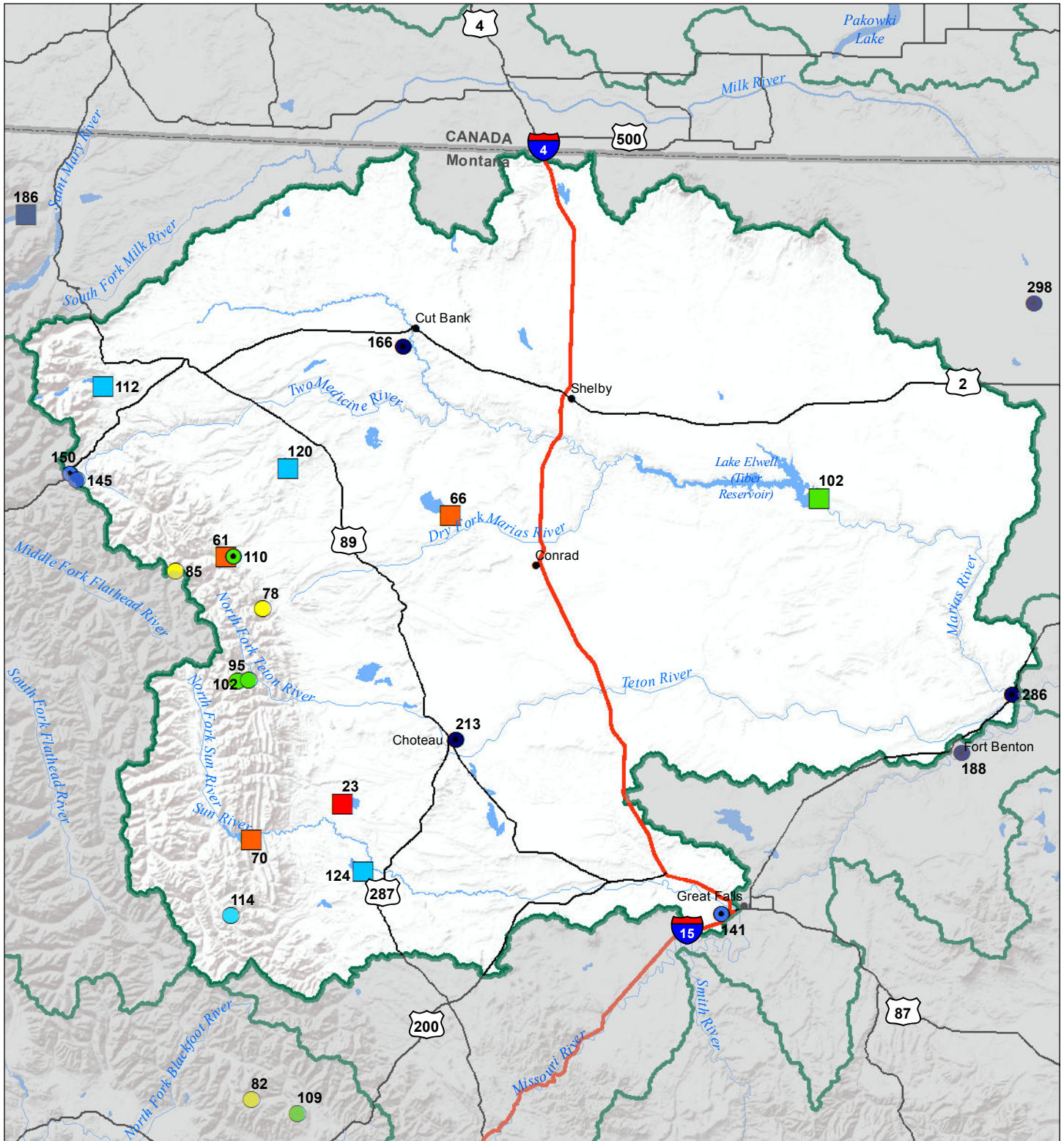


# Sun-Teton-Marias River Basin

## Water Year to Date Precipitation and Reservoir Levels

### Percentage of Normal

#### December 1, 2016



### Precipitation Percent of Normal

SNOTEL		COOP/ACIS	
● > 150%	● 71 - 90%	● > 150%	● 71 - 90%
● 131 - 150%	● 51 - 70%	● 131 - 150%	● 51 - 70%
● 111 - 130%	● 1 - 50%	● 111 - 130%	● 1 - 50%
● 91 - 110%		● 91 - 110%	

### Reservoirs Percent of Normal

● > 150%
● 131 - 150%
● 111 - 130%
● 91 - 110%
● 71 - 90%
● 51 - 70%
● 1 - 50%

