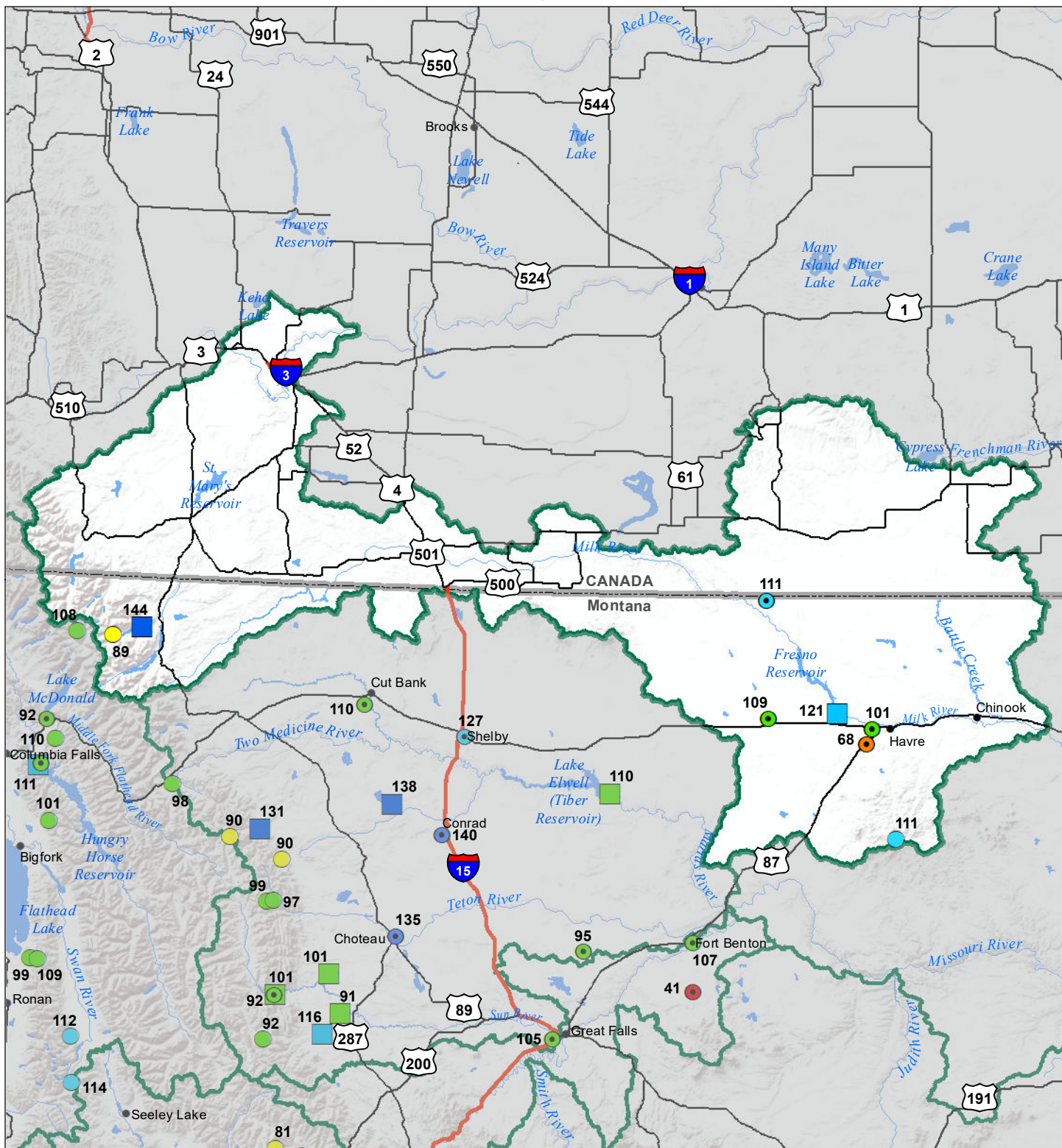


St Mary's-Milk River Basin

Water Year to Date Precipitation and Reservoir Levels

Percentage of Normal

June 1, 2020



Precipitation Percent of Normal

SNOTEL

- > 150%
- 131 - 150%
- 111 - 130%
- 91 - 110%
- 71 - 90%
- 51 - 70%
- 1 - 50%

COOP/ACIS

- > 150%
- 131 - 150%
- 111 - 130%
- 91 - 110%
- 71 - 90%
- 51 - 70%
- 1 - 50%

Reservoirs Percent of Normal

- > 150%
- 131 - 150%
- 111 - 130%
- 91 - 110%
- 71 - 90%
- 51 - 70%
- 1 - 50%

