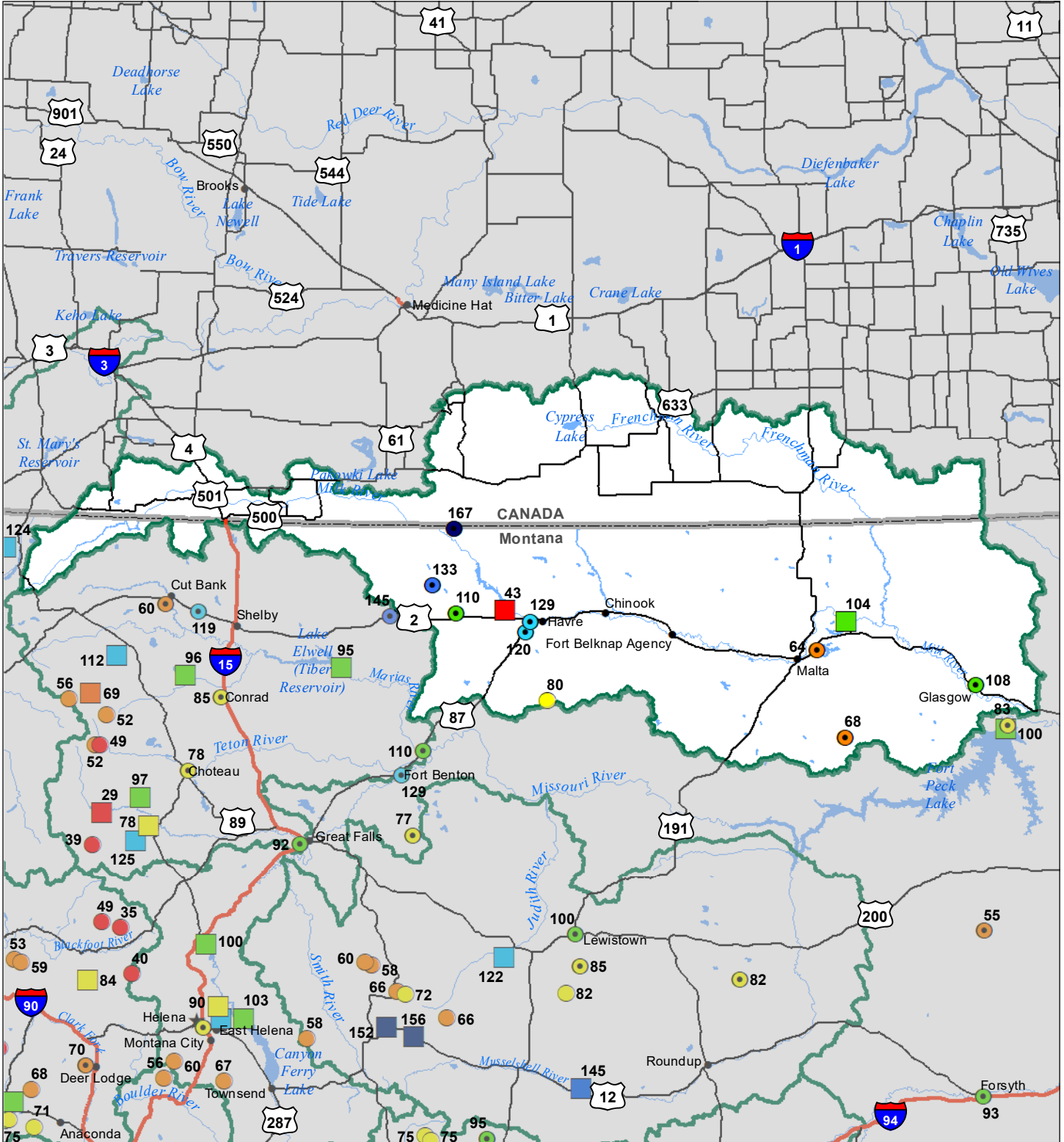


Milk River Basin

Water Year to Date Precipitation and Reservoir Levels Percentage of Normal

January 1, 2024



Precipitation Percent of Normal

SNOTEL		COOP/ACIS	
● > 150%	● 71 - 90%	● > 150%	● 71 - 90%
● 131 - 150%	● 51 - 70%	● 131 - 150%	● 51 - 70%
● 111 - 130%	● 1 - 50%	● 111 - 130%	● 1 - 50%
● 91 - 110%		● 91 - 110%	

Reservoirs Percent of Normal

 > 150%
 131 - 150%
 111 - 130%
 91 - 110%
 71 - 90%
 51 - 70%
 1 - 50%

