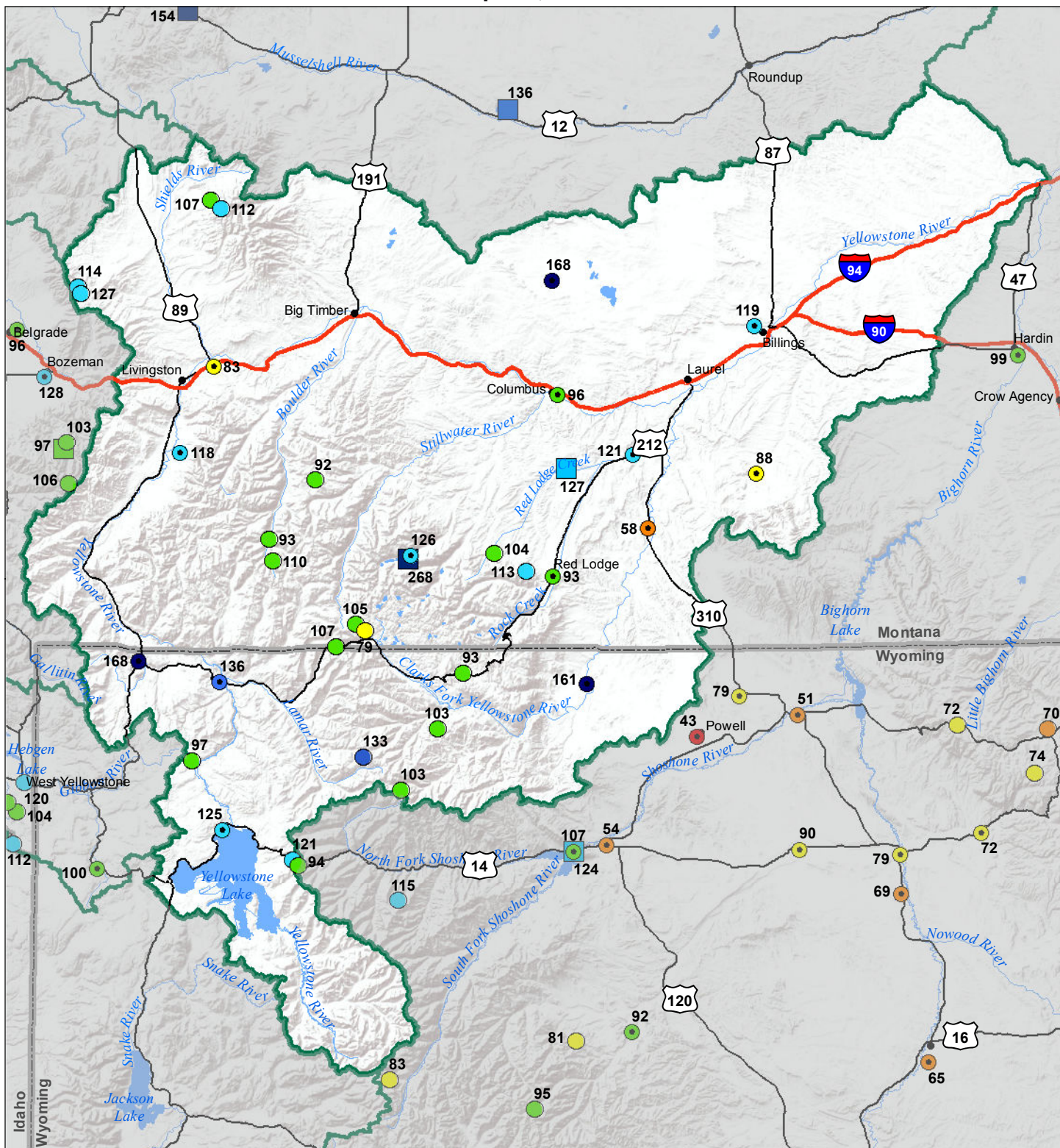


Upper Yellowstone River Basin

Water Year to Date Precipitation and Reservoir Levels

Percentage of Normal

April 1, 2019



Precipitation Percent of Normal		Reservoirs Percent of Normal	
SNOTEL	COOP/ACIS	SNOTEL	COOP/ACIS
● > 150%	● > 150%	■ > 150%	● 71 - 90%
● 131 - 150%	● 131 - 150%	■ 131 - 150%	● 51 - 70%
● 111 - 130%	● 111 - 130%	■ 111 - 130%	● 1 - 50%
● 91 - 110%	● 91 - 110%	■ 91 - 110%	
● 71 - 90%			
● 51 - 70%			
● 1 - 50%			

Reservoirs Percent of Normal
■ > 150%
■ 131 - 150%
■ 111 - 130%
■ 91 - 110%
■ 71 - 90%
■ 51 - 70%
■ 1 - 50%

